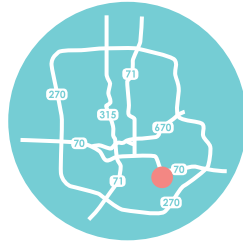


# SOUTHEAST INFANT MORTALITY PROFILE



Where we live, learn, work and play has an impact on our health and the health of babies in our community.

CelebrateOne works with community leaders and residents in eight high-priority neighborhoods to make them safer and healthier for moms-to-be, babies, and families.

## INFANT MORTALITY<sup>1</sup>

This affects life expectancy

Infant mortality is the death of a child before they turn one year of age. In Central Ohio, black babies die at a rate 2.5 times that of white babies.

Southeast	Franklin County
<b>10</b>	<b>781</b>
# of infant deaths from 2010-2014	

Southeast	Franklin County
<b>8.8</b>	<b>8.4</b>
Infant deaths per 1,000 live births	

## LIFE EXPECTANCY<sup>1,2</sup>

Southeast	Franklin County
<b>74.4</b>	<b>77.7</b>
Age In years	

## CAUSES OF INFANT MORTALITY

- Born too small and too soon
- Birth defects
- Unsafe sleep
- Smoking
- Neighborhood health

## UNSAFE SLEEP<sup>1</sup>

Once a baby is 1 month old, the biggest risk for infant mortality is sleep-related death. All babies should sleep alone, on their back, and in an empty crib.

Southeast	Franklin County
<b>1</b>	<b>110</b>
# of sleep-related infant deaths from 2010-2014	

## LOW BIRTH WEIGHT<sup>1</sup>

The leading cause of infant death is babies being born too early and too small to survive.

Southeast	Franklin County
<b>11.1</b>	<b>9.1</b>
% of births low birth weight (< 5.5 lbs)	

# WE CAN MAKE A DIFFERENCE .....

**IMPROVING** our neighborhood will improve our health and quality of life. We have a good place to start because there are many things we can celebrate about our community. ▼

## CIVIC LIFE

Greater South East Area Commission  
 Berwyn East Civic Association and Blockwatch  
 Mideast Area Community Collaborative (MACC)  
 Community Coordinators  
 Community Justice League

## PROJECTS



CelebrateOne Connector Corps  
 Refugee Road Sidewalk  
 Hamilton Rd. Upgrade (I-70 to Refugee Rd.)

## OUR GOAL

CelebrateOne is working to help our neighborhood thrive and for our neighbors to be as healthy as possible.

**6**

No more than 6 infant deaths per 1,000 live births!

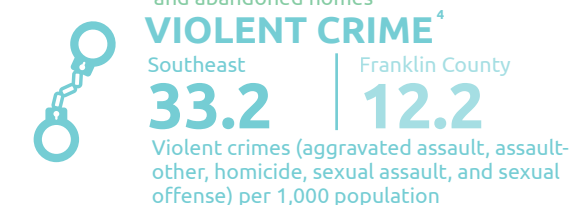
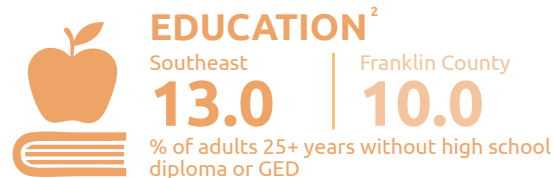
**1/2**

Cut the disparity gap between white and black infant mortality in half!

## HEALTHY BABIES NEED HEALTHY NEIGHBORHOODS

Health is also related to the conditions where we live, learn, work and play. Health is quality schools, good jobs, safe places, decent housing... All of this and more determine the health of our neighborhood and babies.

Every baby deserves to celebrate his or her first birthday.



Data Sources:  
 1. Ohio Department of Health Vital Statistics Data, Analyzed by Columbus Public Health  
 2. Ohio Department of Job and Family Services  
 3. City of Columbus, Department of Development  
 4. City of Columbus, Police Department

Years of Data: 2015 (2011-2015 5-Year Estimates), Percent of adults 25+ years without high school diploma or GED, 2014, Percent of labor force filing for unemployment, 2016, Percent of residential parcels with vacant and abandoned homes, 2014, Violent crimes (aggravated assault, assault-other, homicide, sexual assault, and sexual offense) per 1,000 population