

# CONNECT COLUMBUS PROJECT HIGHLIGHTS



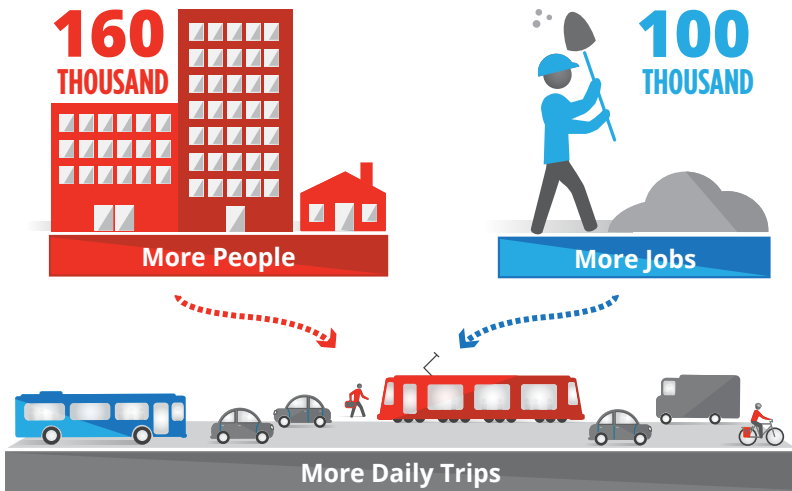
**CONNECT  
COLUMBUS**



BUILDING COLUMBUS' TRANSPORTATION FUTURE

**November 2016**

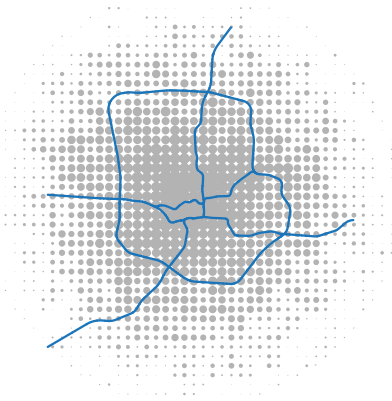
## COLUMBUS IS GROWING



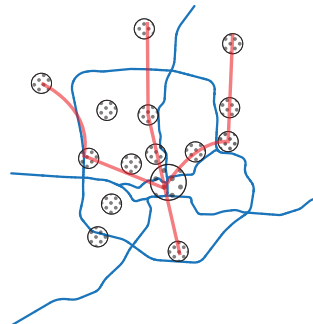
While congestion in Columbus is low compared to peer cities, it may become a bigger threat in the future. The city alone has seen population growth of more than 10,000 people per year over the last 5 years, and this growth is expected to continue. Historically, this growth has been spread throughout the city and region like peanut butter, which can create a bigger strain on City resources and infrastructure. It will be critical for Columbus to focus future growth in areas that can accommodate it, and plan for a transportation system that will support the additional growth.

## RETHINKING GROWTH

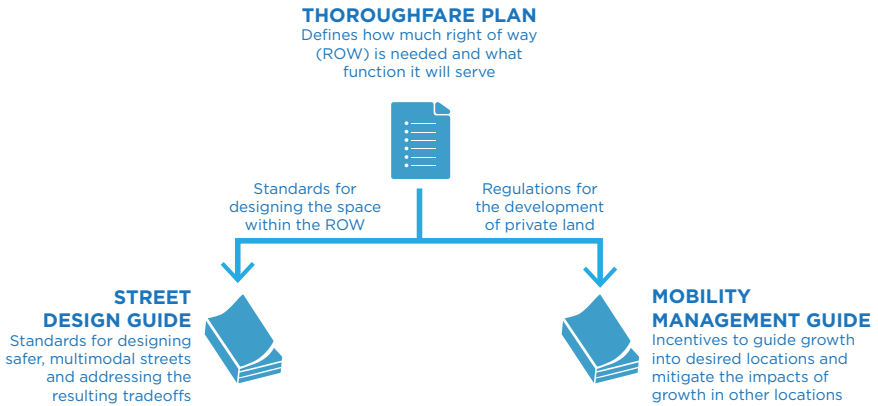
### TREND SCENARIO



### INFILL SCENARIO

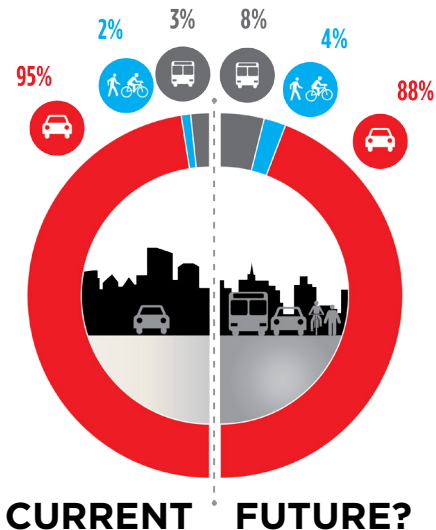


## TOOLS FOR GROWTH



The Connect Columbus Multimodal Thoroughfare Plan will serve as a database that marries the two operating manuals to the Columbus street network. These operating manuals will serve as a guide for the City to steer growth into identified growth areas, and ensure that streets are designed for all potential users.

## RETHINKING SPENDING



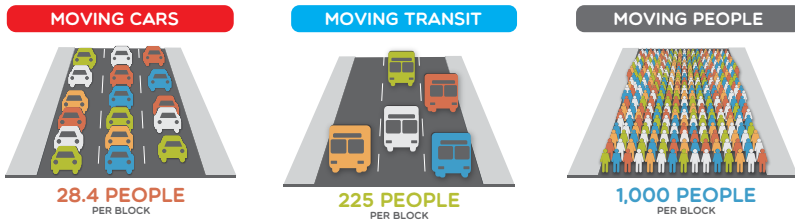
Current regional spending demonstrates a significant focus on roadways and vehicular transportation. Only 5% of capital transportation dollars are spent on bicycle, pedestrian, and transit-related infrastructure. A **slight tweak** in these percentages could result in the following:

- 2 - 3x** the current mileage of low-stress bicycle facilities
- 2 - 3x** the number of people who could **safely bike to parks**
- 4 - 10x** the current bicycle mode share by neighborhood
- 4 - 8x** the number of people who could live **car-free**

## SMART COLUMBUS COORDINATION

# SMARTCOLUMBUS<sup>®</sup>

## THE SPATIAL CHALLENGE



Automated vehicles may bring new efficiencies to traveling by car, but those cars will still take up more space to transport fewer people.

## SMART COLUMBUS IS ONLY **PART** OF THE SOLUTION

Smart Columbus will bring innovative new technologies and transportation solutions to the City of Columbus. It is important to recognize, however, that this is only one piece of a much larger puzzle. Connect Columbus seeks to combine critical transportation infrastructure investments with the enhanced transportation improvements that will come out of the Smart Columbus process to help build the best possible transportation future for all of Columbus.



Like us at **Connect Columbus**



Follow us on Twitter **@ConnectCBUS2015**



Website: **[www.columbus.gov/ConnectColumbus](http://www.columbus.gov/ConnectColumbus)**