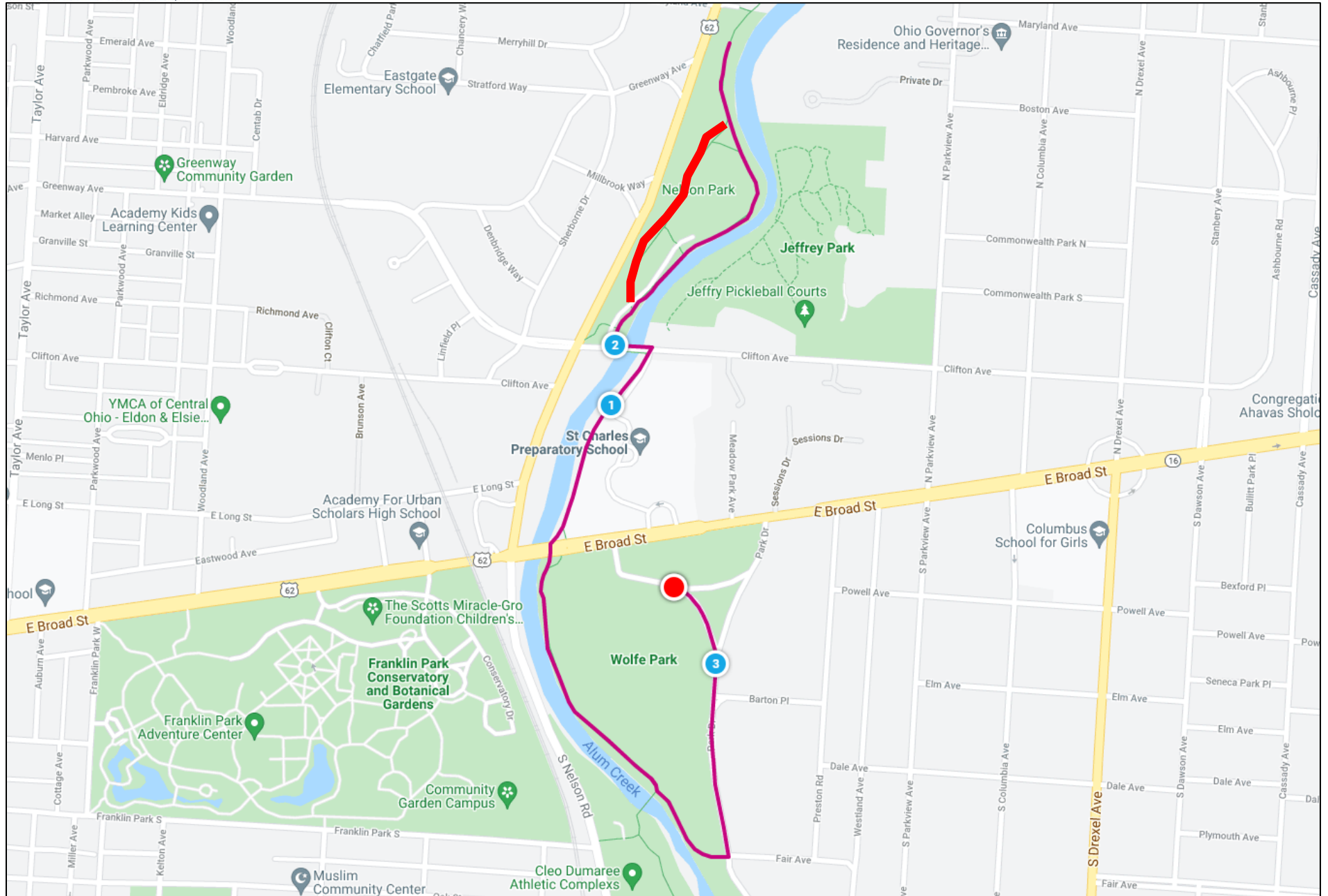


Wolfe Park 1

3.1 Miles

ANDREW J. GINTHER, MAYOR



Course Capacity: 500

Wolfe Park 1

Start on the service road in front of Wolfe Park shelter house and head east

Turn right (south) on Park Dr

Turn right (west) on bike path near Park Dr and Fair Ave

Follow path north and cross Clifton Ave into Nelson Park

Stay to the right (east side) on the trail

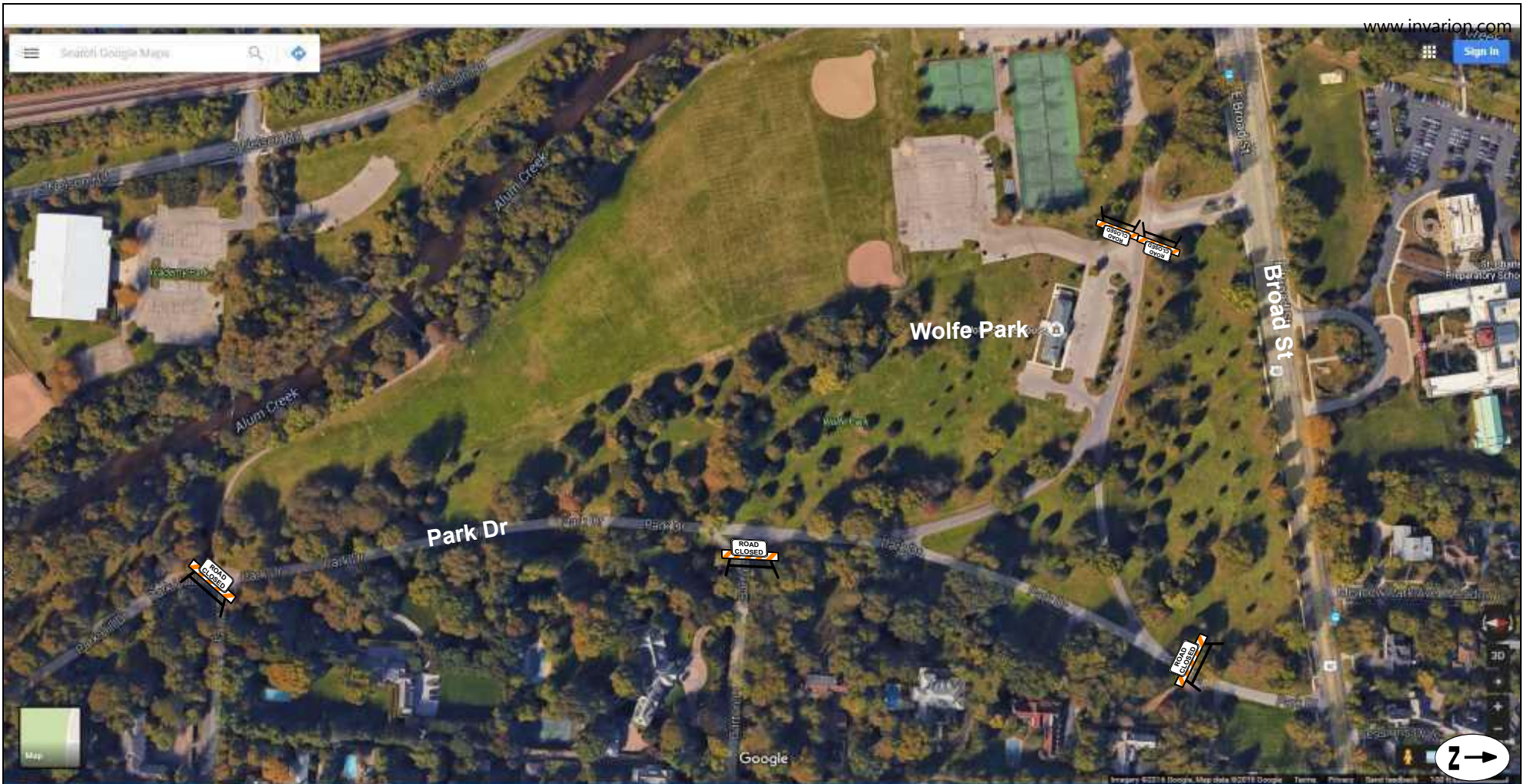
Continue north to a turnaround point and return south

****Stay to the right (west side) on the trail of Nelson Park** (optional)**

Cross Clifton Ave and continue south

Turn left on Park Dr

Finish back on the service road in front of Wolfe Park shelter house.



Wolfe Park 1 & 2

Devices:

- 5 'Road Closed' Signs
- 5 Type I Block Party Barricades

Instructions:

Place barricades as shown on map