

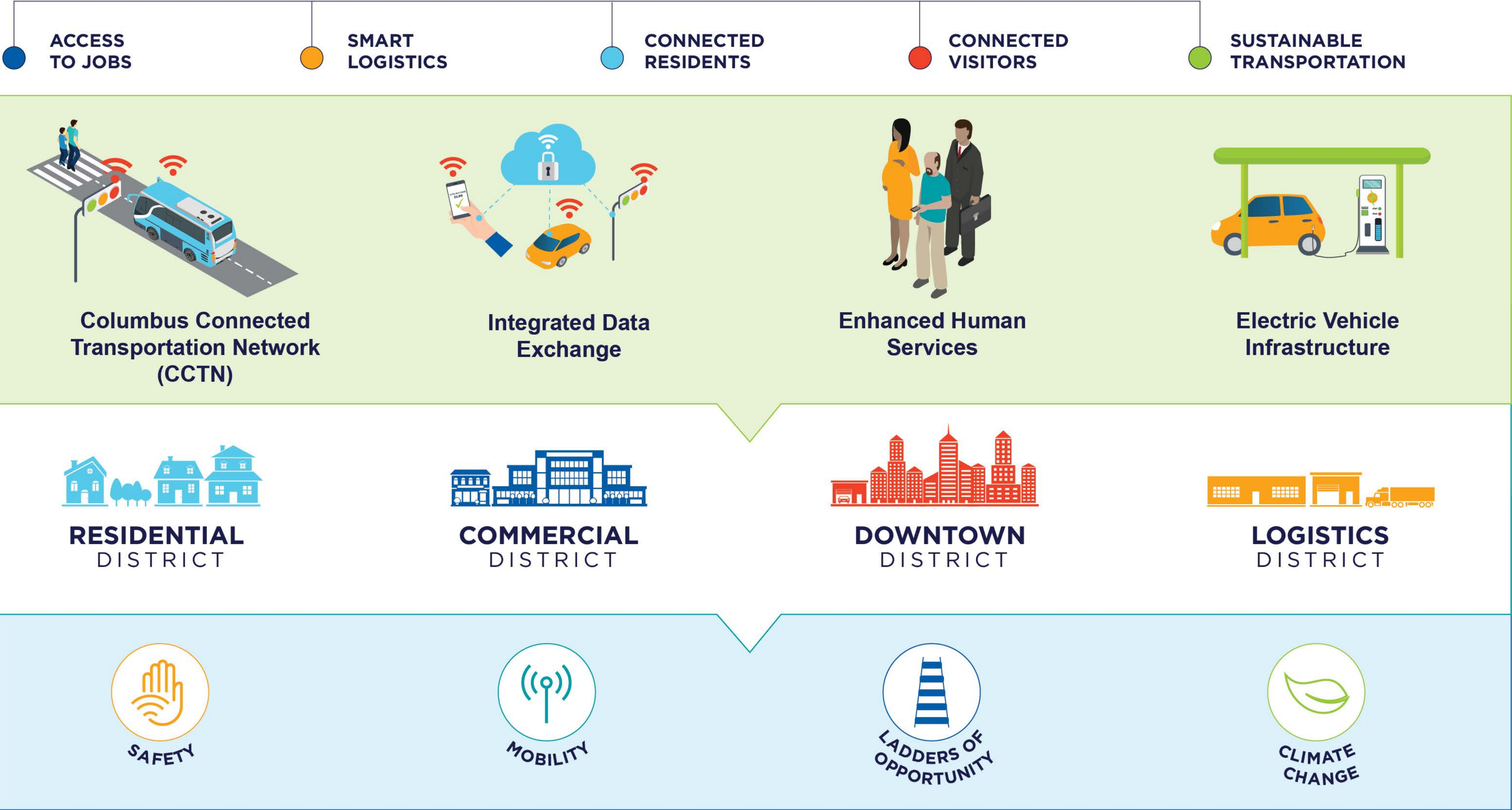
# SMARTCOLUMBUS



U.S. Department of Transportation



# SMARTCOLUMBUS VISION







**RESIDENTIAL  
DISTRICT**



**DOWNTOWN  
DISTRICT**



**COMMERCIAL  
DISTRICT**



**LOGISTICS  
DISTRICT**



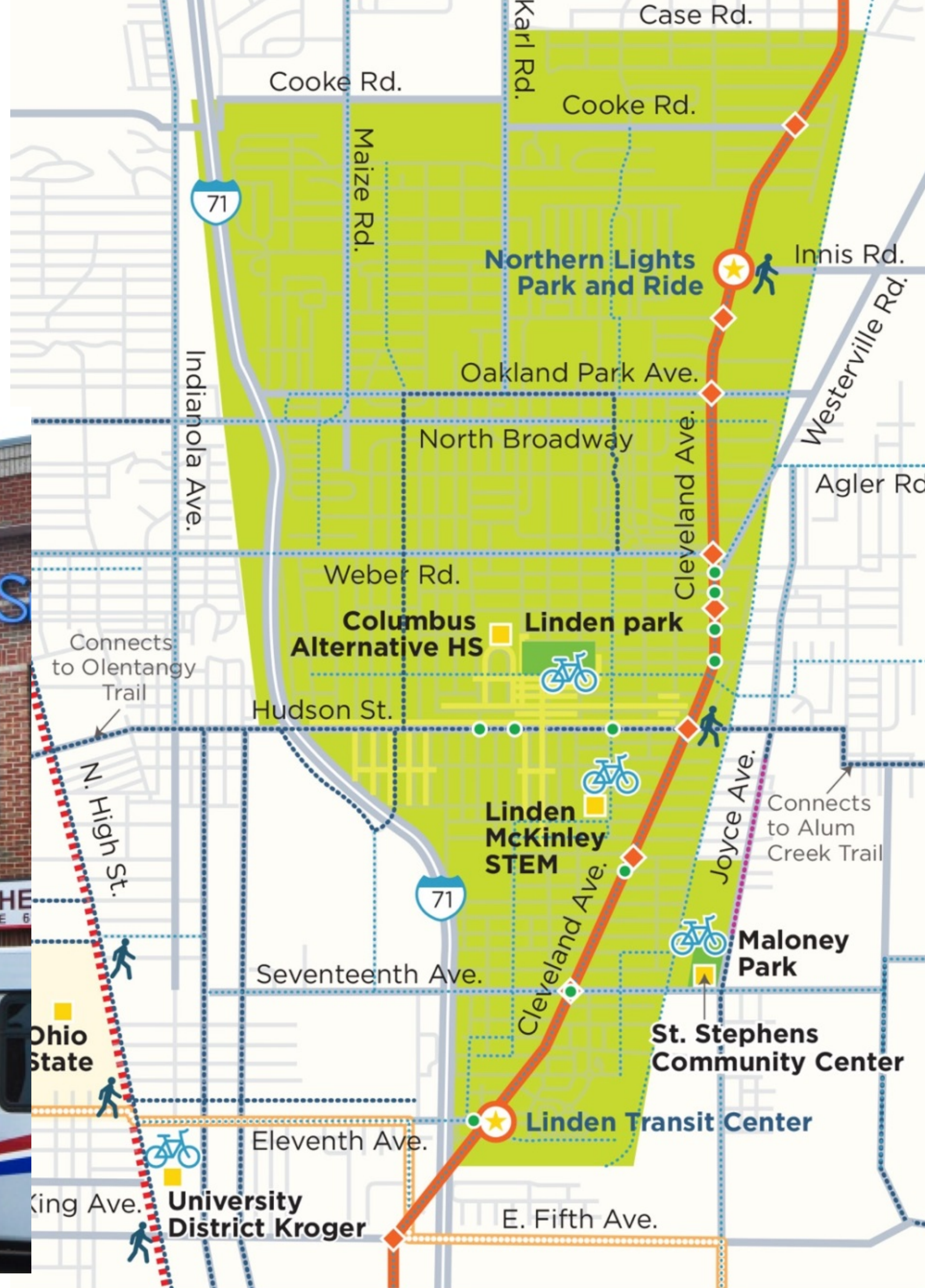
U.S. Department of Transportation

**SMARTCOLUMBUS**





## RESIDENTIAL DISTRICT



## The Linden District



U.S. Department of Transportation

SMARTCOLUMBUS





# RESIDENTIAL DISTRICT



U.S. Department of Transportation

SMARTCOLUMBUS





**RESIDENTIAL**  
DISTRICT



U.S. Department of Transportation

SMARTCOLUMBUS





## RESIDENTIAL DISTRICT



U.S. Department of Transportation

SMARTCOLUMBUS





## RESIDENTIAL DISTRICT



## Common Payment System



## Multi-Modal Trip Planning Application



## Smart Mobility Hubs



## Mobility Assistance for People with Cognitive Disabilities

## Smart Street Lighting

## Pedestrian Collision Avoidance



U.S. Department of Transportation

# SMARTCOLUMBUS





## COMMERCIAL DISTRICT







# Connected Electric Automated Vehicle







## DOWNTOWN DISTRICT



U.S. Department of Transportation

SMARTCOLUMBUS<sup>Wi</sup>





Delivery Zone  
Availability

Enhanced Permit  
Parking

Parking  
Management



U.S. Department of Transportation

SMARTCOLUMBUS





**LOGISTICS**  
DISTRICT



U.S. Department of Transportation

**SMARTCOLUMBUS**





**LOGISTICS  
DISTRICT**

**Truck  
Platooning**

**Oversize Vehicle  
Routing**

**Interstate Truck  
Parking Availability**

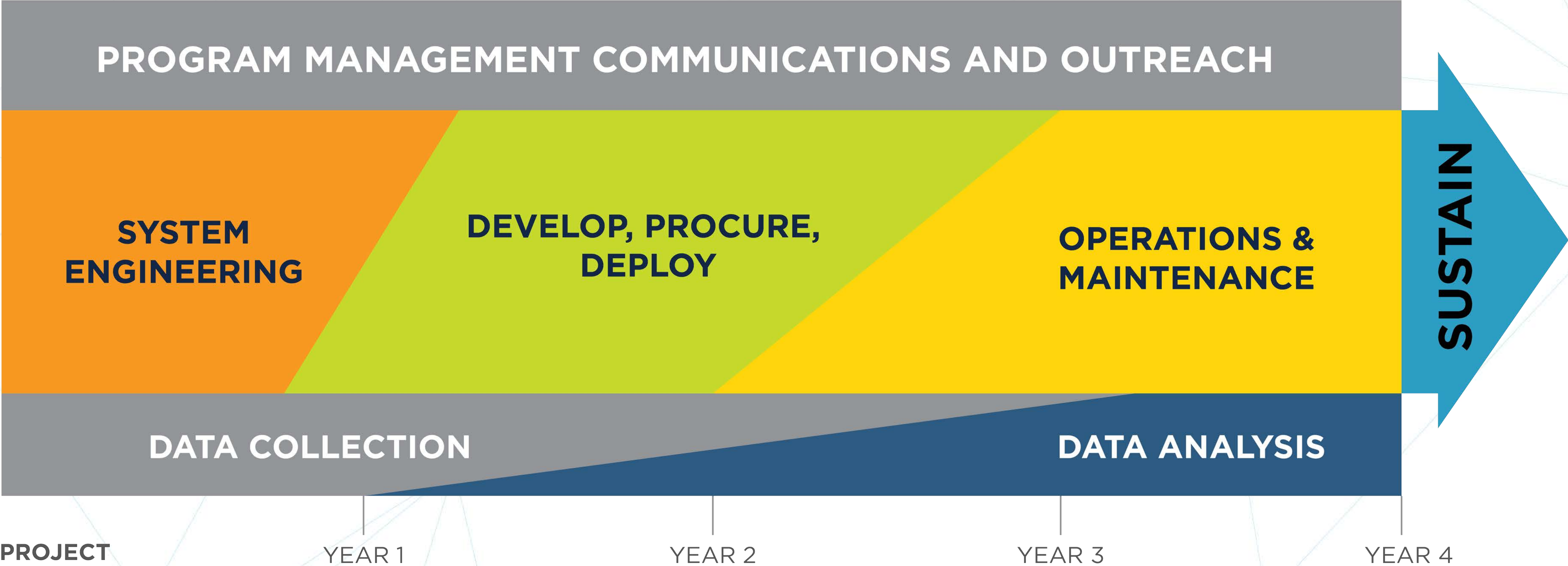


U.S. Department of Transportation

**SMARTCOLUMBUS**



# USDOT program





# USDOT Working Groups

Working Group	Projects
1. Connected Vehicles	Connected Vehicle Environment (CVE)
2. Connected Travelers	Common Payment System
	Multi-Modal Trip Planning
3. Data and Analytics	Integrated Data Exchange
4. First/Last Mile	Smart Mobility Hubs
5. Downtown Parking	Enhanced Permit Parking
	Delivery Zone Availability
	Event Parking Management
6. Smart Street Lighting	Smart Street Lighting
7. Transit/Pedestrian Safety	Transit/Pedestrian Collision Avoidance System
8. Mobility Assistance	Mobility Assistance for People with Cognitive Disabilities
9. Autonomous Vehicles	Connected Electric Automated Vehicle (EAV)
10. Truck Platooning	Truck Platooning
11. Smart Logistics	Oversize Vehicle Routing
	Interstate Truck Parking Availability



# Thank you



U.S. Department of Transportation

SMARTCOLUMBUS<sup>US</sup>