

Transmission & Distribution
Material & Installation Specification

Pin and Pin Insulator

I. Quantity

The base bid shall include the indicated number of assemblies as shown or required, furnished, and installed as hereinafter specified.

II. Material

- A. Pins for crossarm mounting shall be hot dipped galvanized steel per ANSI - 153 with 1" ANSI Standard nylon threads, AB Chance # PSC2060729 or engineer approved equal.
- B. Insulators shall be Porcelain Products #366-S, or engineer approved equal, with the following characteristics: "F" neck with top and side grooves, dry arcing distance 5", saddle groove radius 5", wire groove radius 0.5625", pin diameter 1", cantilever strength 3000lb, low frequency flashover dry 65kv, low frequency flashover wet 35kv, impulse flashover positive 105kv, impulse flashover negative 130kv, low frequency puncture voltage 95kv.
Radio influence low frequency test voltage data:
Test Voltage, rms to ground 10KV, Maximum RIV at 1000 kHz – V = 50
- C. All steel hardware to be hot dipped galvanized.

III. Installation

- A. The installation shall be as shown on drawing TDMIS-20.
- B. Conductor ties shall be as per TDMIS-24 and/or TDMIS-25 as appropriate for the conductor involved. Ties and payment for ties are to be included with conductor modules.

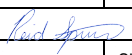
- C. Insulators shall not be used to support conductor during stringing or sag adjustments. Conductors shall be placed in, and secured to insulators after a 24hr period after stringing and sagging to allow for conductor and anchor creep.

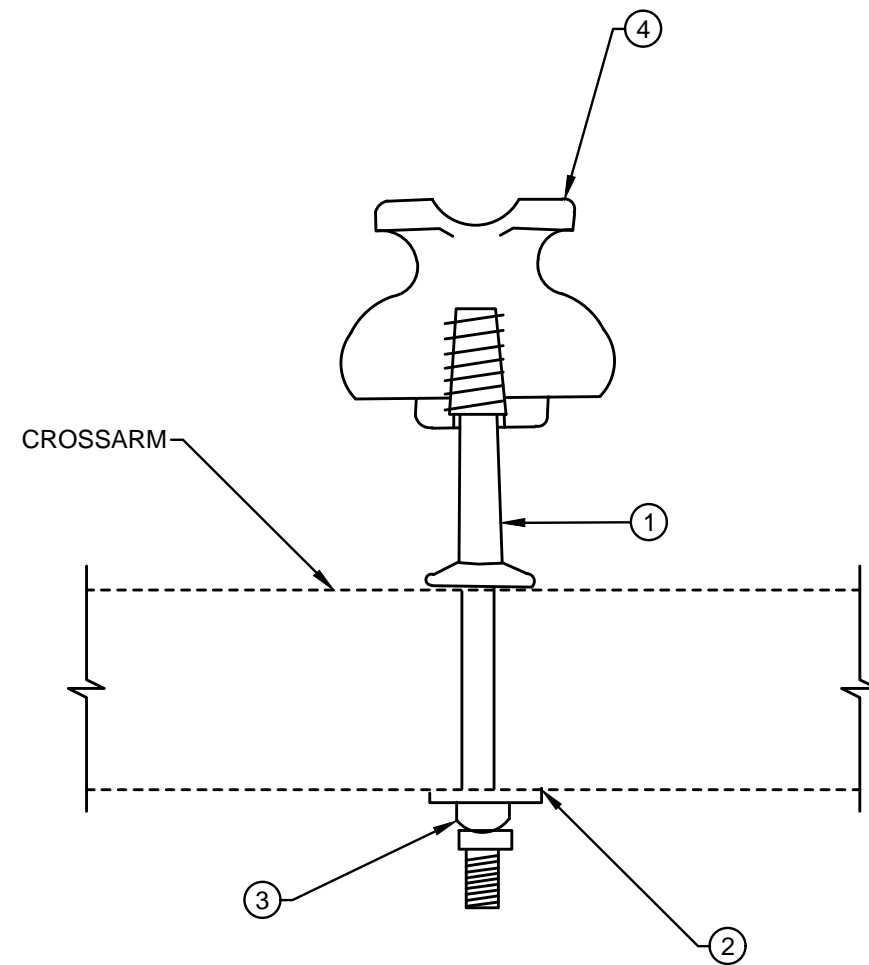
IV. Method of measurement

Shall be per each completed assembly including pin, bolts, washers, pin insulator, tools, labor, equipment and all miscellaneous required for a complete and operational module.

V. Basis of payment

Items	Unit	Description
TDMIS-20	Each	Pin and pin insulator module

CITY OF COLUMBUS DEPT. OF PUBLIC UTILITIES – DIVISION OF POWER PIN AND PIN INSULATOR		
DRAWN BY: AEC	DATE: 01/01/2018	TDMIS-20
APPROVED: 		
	SHEET 1 of 2	



ITEM LIST			
ITEM #	DESCRIPTION	PART #	QTY.
①	PIN, CROSSARM, 1" NYLON THREAD, GALVANIZED	19312	1
②	WASHER, SQUARE FLAT, 2 1/4"X2 1/4"X3/16", 11/16" DIA. HOLE, GALVANIZED	18901	1
③	NUT, SQUARE, 5/8"-11 UNC, GALVANIZED (SUPPLIED WITH PIN)	XXXXX	1
④	INSULATOR, PORCELAIN, PIN TYPE, 1" THREAD, GRAY, 15 KV, F NECK	20256	1

CITY OF COLUMBUS, OHIO
DEPT. OF PUBLIC UTILITIES - DIVISION OF POWER

PIN AND PIN INSULATOR

MPXAIA

DRAWN BY: AEC

DATE: 01/01/2018

APPROVED: *[Signature]*

SCALE: NONE

SHEET: 2 OF 2

TDMIS-20