

Transmission & Distribution
Material & Installation Specification

Fiberglass Guy Insulator and Grips

I. Quantity

The base bid shall include the indicated length of guy wire of this type furnished and installed as hereinafter specified.

II. Material

- A. The material shall be equal in quality, design, performance, and appearance to the guy wire specified on drawing TDMIS-111.
- B. Insulator - Insulator, strain, fiberglass 7/8" x 96" minimum strength 30,000 lbs., clevis-clevis end fittings, one sheave wheel, Joslyn #300-96, Anderson #APF396R or approved equal.
- C. Preformed Grip - Grip for 16M guy wire, 3/8"- 7 #8 Alumoweld, color code: orange, Chance #16M-AWSBG, Preformed # AWDE-4122 or approved equal.

III. Installation

- A. Guy insulator and grips must be installed before line conductors are installed when included as a component of various assemblies. Guy wires shall be pulled taut by means of a hoist until the pole is pulled over slightly toward the guy. After conductors are pulled and up to initial sag, guys shall be adjusted to assure pole rake is one pole width towards the guy.
- B. When guy insulators and grips are added to an existing assembly, the pole must be held in the existing position and rake.
- C. Additional fiberglass guy insulators may be required for adequate clearance. When connecting insulators back-to-back use a 90-degree figure-8 link.

- D. Preformed guy grips shall be used to terminate the guy strand to the fiberglass guy insulator. The ends of the grip are wrapped around the guy strand and snapped into position completing the installation.

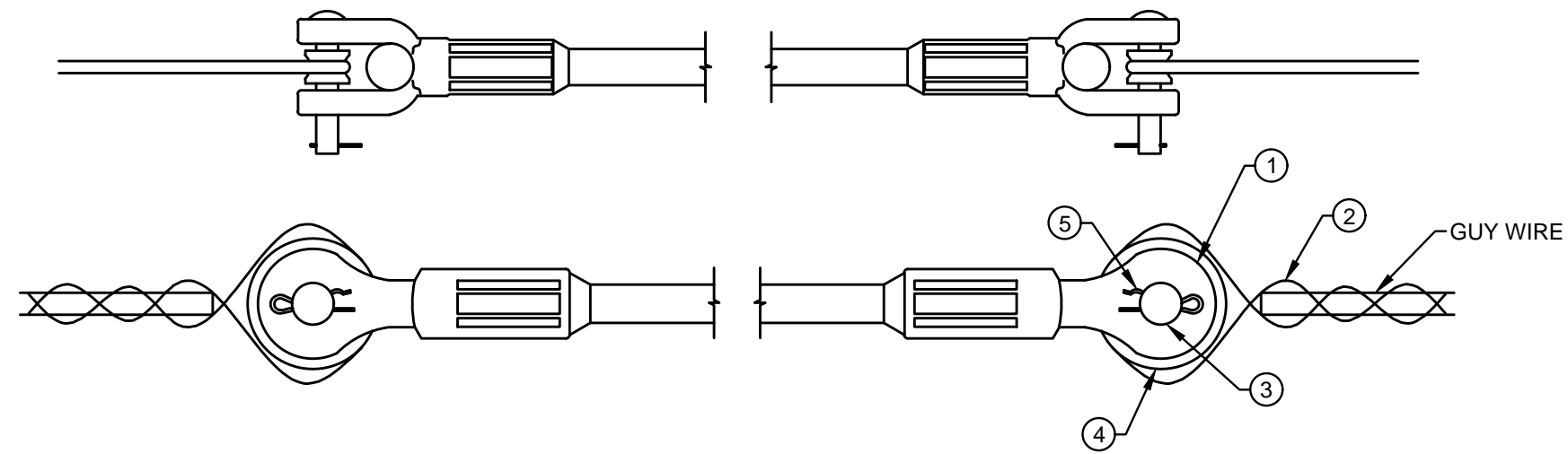
IV. Method of measurement

Guy strain insulators, (and respective components), shall be included as a component of various down guy and span guy modules.

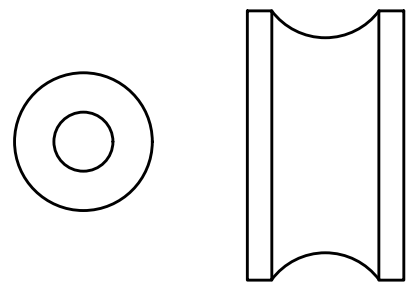
V. Basis of payment

Shall be included with applicable modules.

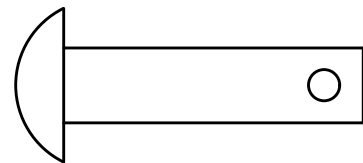
CITY OF COLUMBUS DEPT. OF PUBLIC UTILITIES – DIVISION OF POWER FIBERGLASS GUY INSULATOR AND GRIPS		
DRAWN BY: AEC	DATE: 01/01/2018	TDMIS-111
APPROVED: <i>[Signature]</i>		
	SHEET 1 of 2	



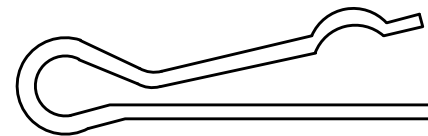
**DETAIL 1
GUY INSULATOR AND GRIP**



**DETAIL 2
SHEAVE WHEEL**



**DETAIL 3
GUY STRAIN CLEVIS PIN**



**DETAIL 4
COTTER KEY**

ITEM LIST			
ITEM #	DESCRIPTION	PART #	QTY.
①	STRAIN INSULATOR, HUBBELL CHANCE	*	2
②	GRIP, PREFORMED	19225	2
③	CLEVIS PIN	*	2
④	SHEAVE WHEEL	*	2
⑤	COTTER KEY	*	2

CITY OF COLUMBUS, OHIO
DEPT. OF PUBLIC UTILITIES - DIVISION OF POWER

FIBERGLASS GUY INSULATOR AND GRIPS

MPGI

DRAWN BY: AEC	DATE: 01/01/2018	TDMIS-111
APPROVED: <i>[Signature]</i>		
SCALE: NTS	SHEET: 2 OF 2	