

**Transmission & Distribution**  
**Material & Installation Specification**

**Spacer Cable Angle Bracket 5 to 60 Degrees**

**I. Quantity**

The base bid shall include the indicated number of 5 to 60° spacer cable angle brackets furnished and installed as hereinafter specified.

**II. Material**

- A. Angle brackets - Shall be Hendrix BA3-15 or approved equal and all associated hardware.
- B. Insulators - Shall be Hendrix HPI-55-4 or approved equal.
- C. Pin - Shall be Hendrix type SSP-2 or approved equal.
- D. Double Insulator Plate - Shall be Hendrix type 2IP or approved equal.
- E. Messenger Clamp - Shall be Hendrix CMA-2 or approved equal.
- F. Ground Wire - The ground wire shall be #6 solid soft drawn bare copper.
- G. Connectors - Copper compression type.
- H. All steel hardware to be hot dipped galvanized.

**III. Installation**

- A. The installation shall be as shown on drawing TDMIS-308.
- B. The angle bracket specified herein shall be used to support and stabilize conductors and messenger, on angle poles with line angles from and including 5 to 60 degrees.

**IV. Method of measurement**

Shall be per each completed assembly including bracket, bolts, plates, insulators, washers, ground connections, tools, labor, tension and guy adjustments, equipment and all miscellaneous required for a complete and operational module.

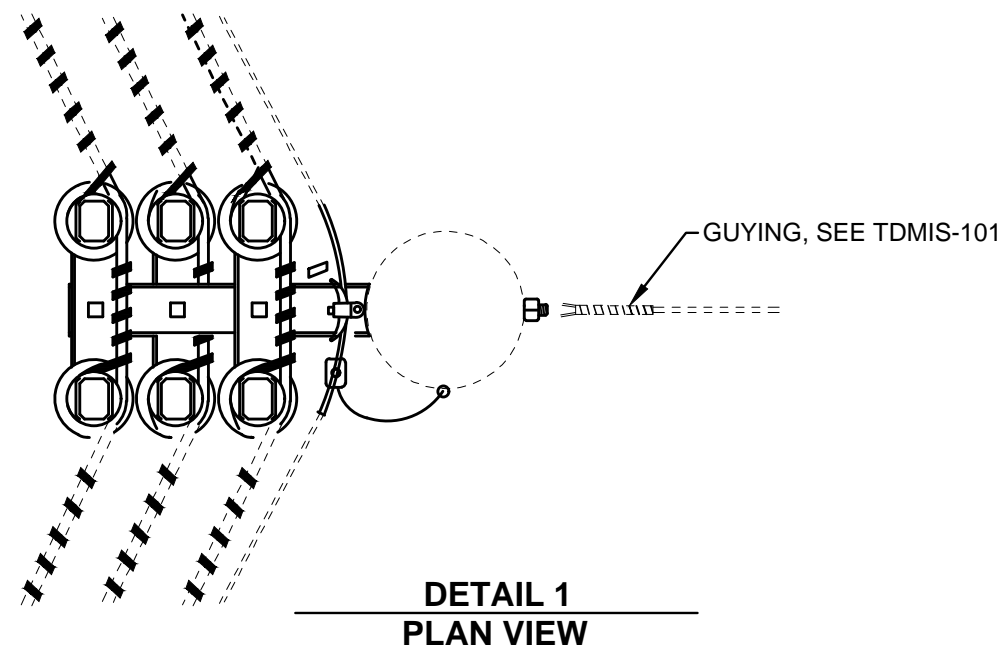
**V. Basis of payment**

Items	Unit	Description
TDMIS-308	Each	Spacer cable angle bracket 5 to 60 degrees

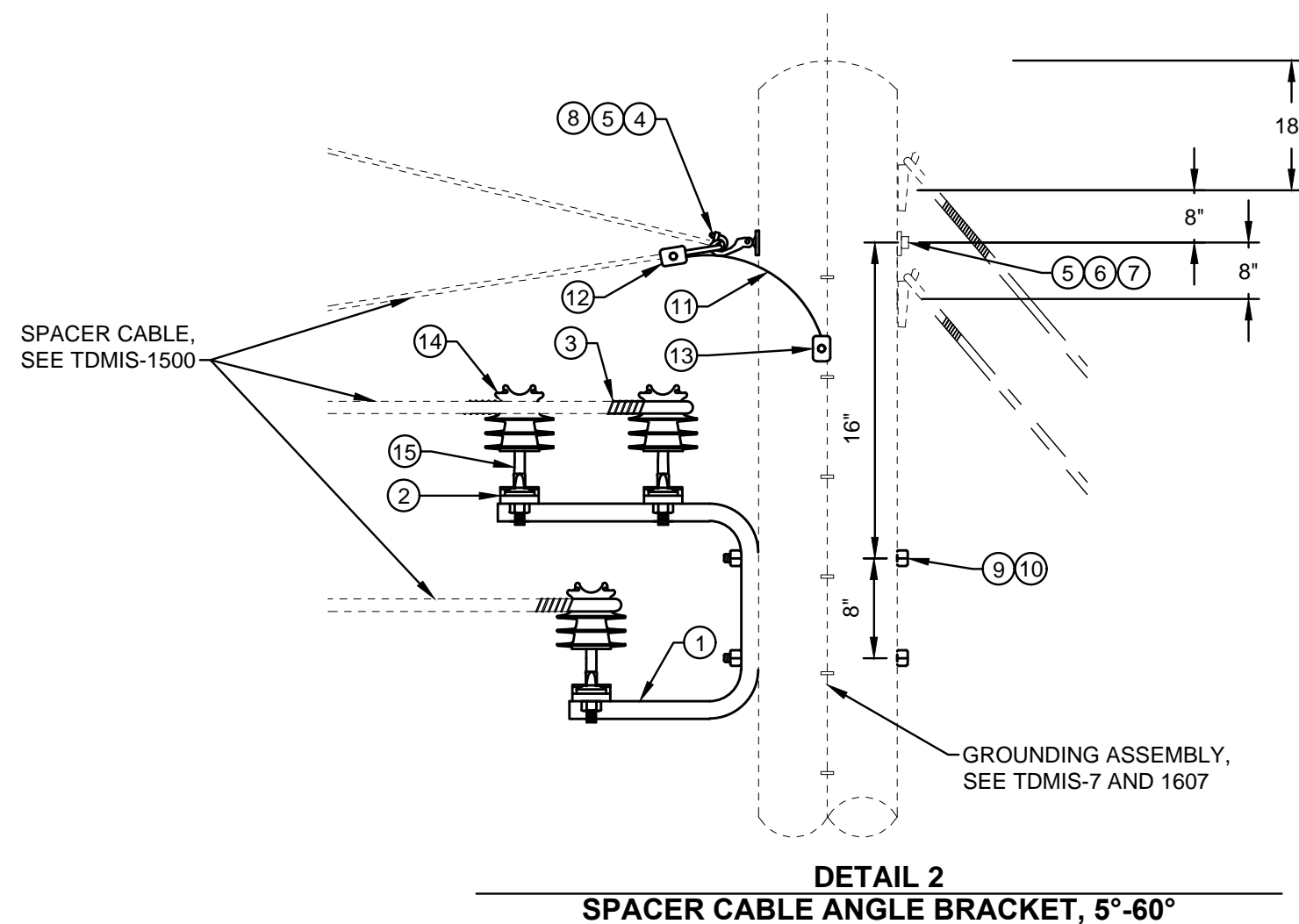
CITY OF COLUMBUS DEPT. OF PUBLIC UTILITIES – DIVISION OF POWER SPACER CABLE ANGLE BRACKET 5 TO 60 DEGREES		
DRAWN BY: AEC	DATE: 01/01/2018	<b>TDMIS-308</b>
APPROVED: <i>[Signature]</i>		
SHEET 1 of 2		

**GENERAL NOTES:**

- FIRST SPACER 30'-0" FROM POLE



<b>REFERENCE LIST</b>	
TDMIS	DESCRIPTION
1	WOOD POLES
7	OVERHEAD DISTRIBUTION CIRCUIT GROUNDING
101	DOUBLE DOWN GUY & ANCHOR WITH INSULATOR
1500	OVERHEAD CONDUCTOR, SPACER CABLE
1607	GROUND ROD TEST



<b>ITEM LIST</b>			
ITEM #	DESCRIPTION	PART #	QTY.
①	ANGLE BRACKET, HENDRIX TYPE BA3-15	19643	1
②	DOUBLE INSULATOR PLATE, HENDRIX TYPE 2IP, SUPPLIED W/ BOLT AND NUT	20319	3
③	COVERED WIRE TIE, #4 SOLID S.D. ALUMINUM WITH .030" POLYETHYLENE	20327	6
④	CLAMP, MESSENGER, ANGLE	20313	1
⑤	WASHER, CURVED, SQ. 4"X4"X1/4", 15/16" DIA. HOLE	18900	2
⑥	WASHER, SPRING LOCK, 13/16" DIA. HOLE, DOUBLE COIL	18894	1
⑦	MACHINE BOLT, 3/4" X REQUIRED LENGTH	42372	1
⑧	EYE NUT, 3/4"	18978	1
⑨	MACHINE BOLT, 5/8" X REQUIRED LENGTH	42369	2
⑩	SQUARE WASHER, CURVED, 2 1/4"X2 1/4"X3/16", MIN	18897	2
⑪	GROUND WIRE, S.D. COPPER, SOLID, #6 MIN.	20082	3
⑫	CONNECTOR, COMPRESSION, #6 TO #2/0	19629	1
⑬	CONNECTOR, COMPRESSION, #6 TO #6	19628	1
⑭	INSULATOR, PIN TYPE, HENDRIX TYPE HPI-55-4	20256	6
⑮	PIN, INSULATOR, HENDRIX TYPE SSP-2	19307	6

CITY OF COLUMBUS, OHIO DEPT. OF PUBLIC UTILITIES - DIVISION OF POWER	
<b>SPACER CABLE ANGLE BRACKET 5 TO 60 DEGREES MSCAB60</b>	
DRAWN BY: AEC	DATE: 01/01/2018
APPROVED: <i>[Signature]</i>	TDMIS-308
SCALE: NTS	SHEET: 2 OF 2