

**Transmission & Distribution**  
**Material & Installation Specification**

**Spacer Cable Spacers**

**I. Quantity**

The base bid shall include the indicated number of spacers furnished and installed as hereinafter specified.

**II. Material**

- A. Spacers with integral clamp and components as indicated on drawings TDMIS-310.
- B. The Spacers Hendrix RTL or approved equivalent are designed for use in the spacer cable system. After being installed and clamped to the messenger, the spacers support, separate and clamp the phase conductors in a triangular configuration. The spacers are molded using Hendrix or approved equivalent, grey, track resistant, high density polyethylene.

**III. Installation**

- A. The installation shall be as shown on drawing TDMIS-302&303.
- B. Spacers are installed at 30 foot intervals. For steep grade applications (greater than 20 degrees), specify the RTL-15DM or RTL-46DM or the RTL- GO95DM which is equipped with a metal clamp for fastening to the messenger. The clamp has a swivel which allows the spacer to hang vertically from the angled messenger.

Catalog No.*	Min. Leakage Distance (in)	Messenger Range (in)	Cable Range (in)	Max. System Voltage (kV)	Short Circuit Rating (kA)	Weight (lbs.)
RTL-15	10 ¾	.375-.750	.438-2.00	15	13.5	2.5
RTL-46	17 ½	.375-.750	.438-2.00	46	16	3.6
RTL-GO95	28 ½	.375-.750	.438-2.00	46	20	5.5

\*Specify catalog No. RTL-15DM or RTL-46DM spacer for steep grade or angle applications (greater than 20°).

- C. Installation shall include sag and tension adjustments, guy pulling adjustments and additional spacers as required for a complete, safe, and operational system.

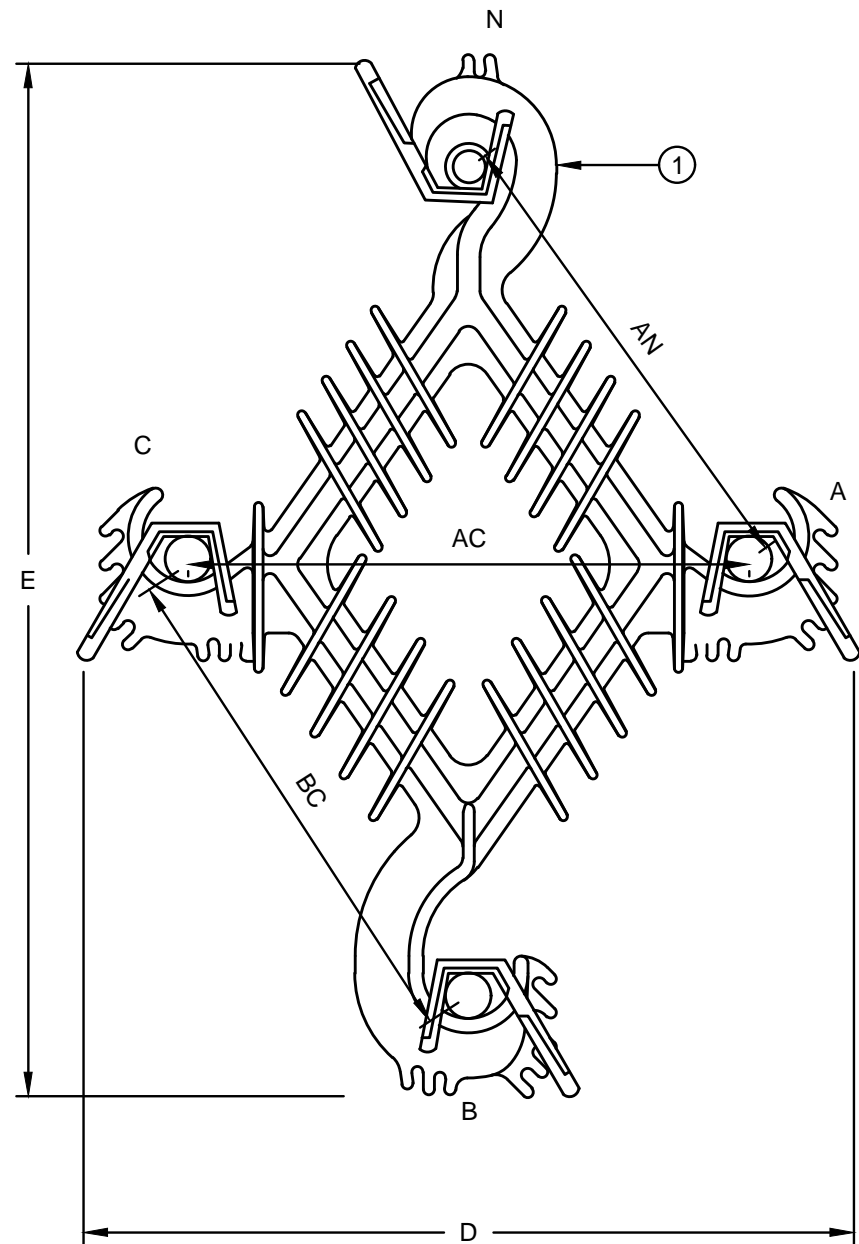
**IV. Method of measurement**

Shall be per each completed assembly including all required clamps, misc. hardware, tools, equipment, labor, tension adjustments, as required for complete and operational system.

**V. Basis of payment**

Items	Unit	Description
TDMIS-310	Each	Spacer cable spacers

CITY OF COLUMBUS DEPT. OF PUBLIC UTILITIES – DIVISION OF POWER SPACER CABLE SPACERS		
DRAWN BY: AEC	DATE: 01/01/2018	<b>TDMIS-310</b>
APPROVED: <i>[Signature]</i>		
	SHEET 1 of 2	



**DETAIL 1  
SPACER WITH CLAMPS**

**DIMENSION AND SPACING**

CATALOG #	DIMENSIONS (IN)		CONDUCTOR SPACING (IN)		
	D	E	AN	AC	BC
RTL-15	16 1/2	23 1/2	8 1/2	8	8
RTL-46	20 1/2	29	12	11 1/2	11 1/2
RTL-GO95	27 1/8	39 1/4	18	18	18

**ITEM LIST**

ITEM #	DESCRIPTION	PART #	QTY.
①	SPACER WITH CLAMPS	20322	1

CITY OF COLUMBUS, OHIO  
DEPT. OF PUBLIC UTILITIES - DIVISION OF POWER

SPACER CABLE SPACERS

DRAWN BY: AEC DATE: 01/01/2018

APPROVED: *[Signature]*

SCALE: NTS SHEET: 2 OF 2

TDMIS-310