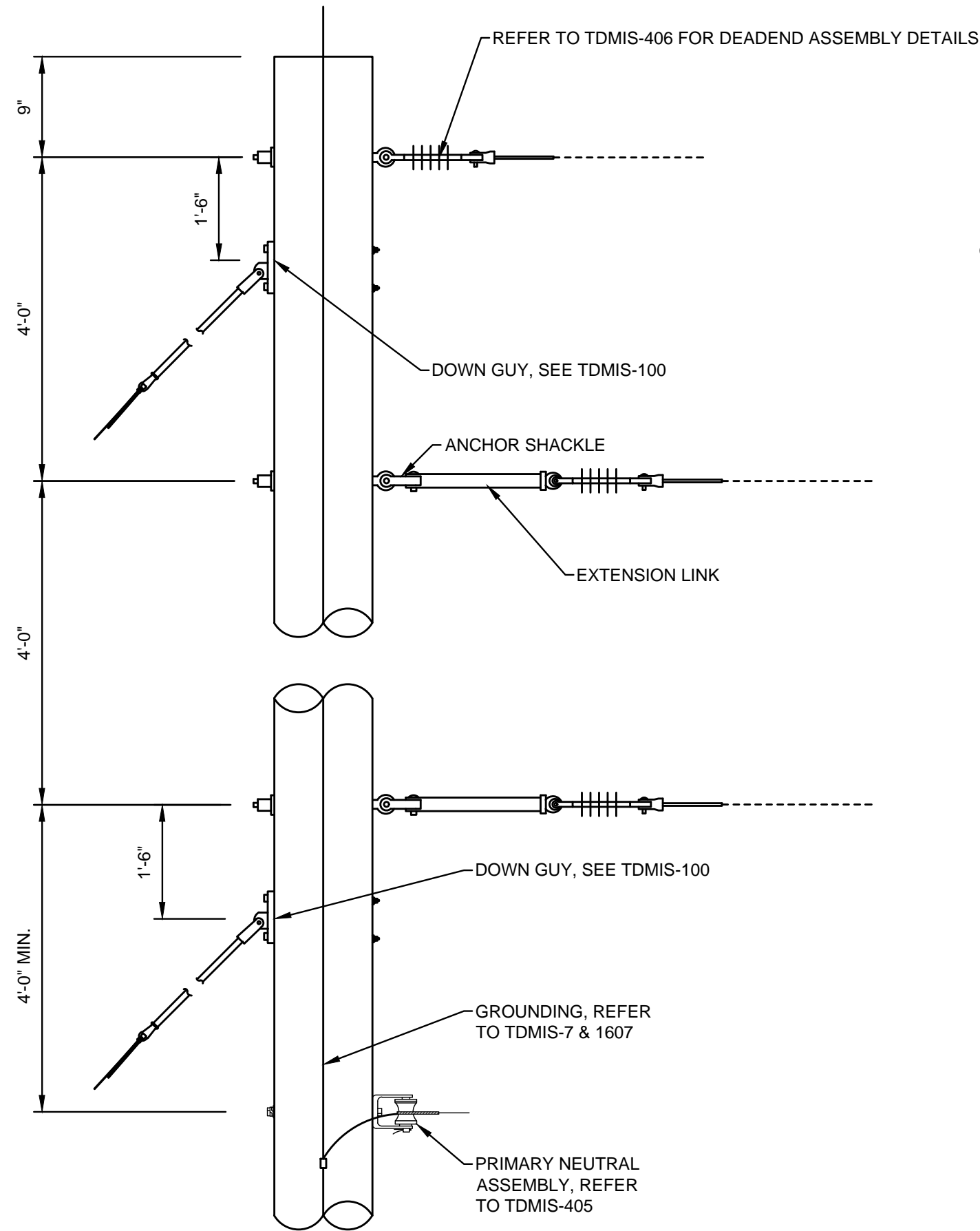


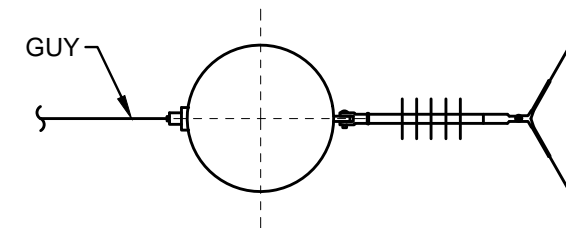
GENERAL NOTES:

1. THE CITY WILL PAY FOR ALL WORK INSTALLED AS SPECIFIED IN THIS DRAWING ACCORDING TO THE APPROPRIATE CONTRACT ITEMS FOR EACH COMPONENT OF THE WORK.



DETAIL 1

MEDIUM LINE ANGLES 20°-60°, THREE PHASE



**DETAIL 2
PLAN VIEW**

REFERENCE LIST

TDMIS	DESCRIPTION
1	WOOD POLES
7	OVERHEAD DISTRIBUTION CIRCUIT GROUNDING
100	SINGLE DOWN GUY AND ANCHOR WITH INSULATOR
206	DEADEND ASSEMBLIES
405	PRIMARY NEUTRAL ASSEMBLY
406	DEADEND ASSEMBLY
1607	GROUND ROD TEST

CITY OF COLUMBUS, OHIO
DEPT. OF PUBLIC UTILITIES - DIVISION OF POWER

**MEDIUM LINE ANGLES, 20° TO 60°
THREE PHASE CONSTRUCTION**

DRAWN BY: AEC DATE: 01/01/2018

APPROVED: *[Signature]*

SCALE: NTS

SHEET: 1 OF 1

TDMIS-402

THIS DRAWING IS FOR REFERENCE ONLY