

Transmission & Distribution
Material & Installation Specification

Primary Neutral Tangent Assembly

V. Basis of payment

Items	Unit	Description
TDMIS-405	Each	Primary neutral tangent assembly

I. Quantity

The base bid shall include the indicated number of Primary Neutral Tangent Assemblies as shown or required, furnished, and installed as hereinafter specified.

II. Material

- A. Primary neutral hardware shall consist of a 3" or 4" spool insulator mounted in a galvanized clevis and hand tie appropriate for the size of the neutral conductor.
- B. Connector shall be H-Tap type, copper only, for copper to copper connections. Copper to aluminum or aluminum to aluminum shall be aluminum H-Tap type with antioxidant factory applied within grooves.
- C. All steel hardware to be hot dipped galvanized.

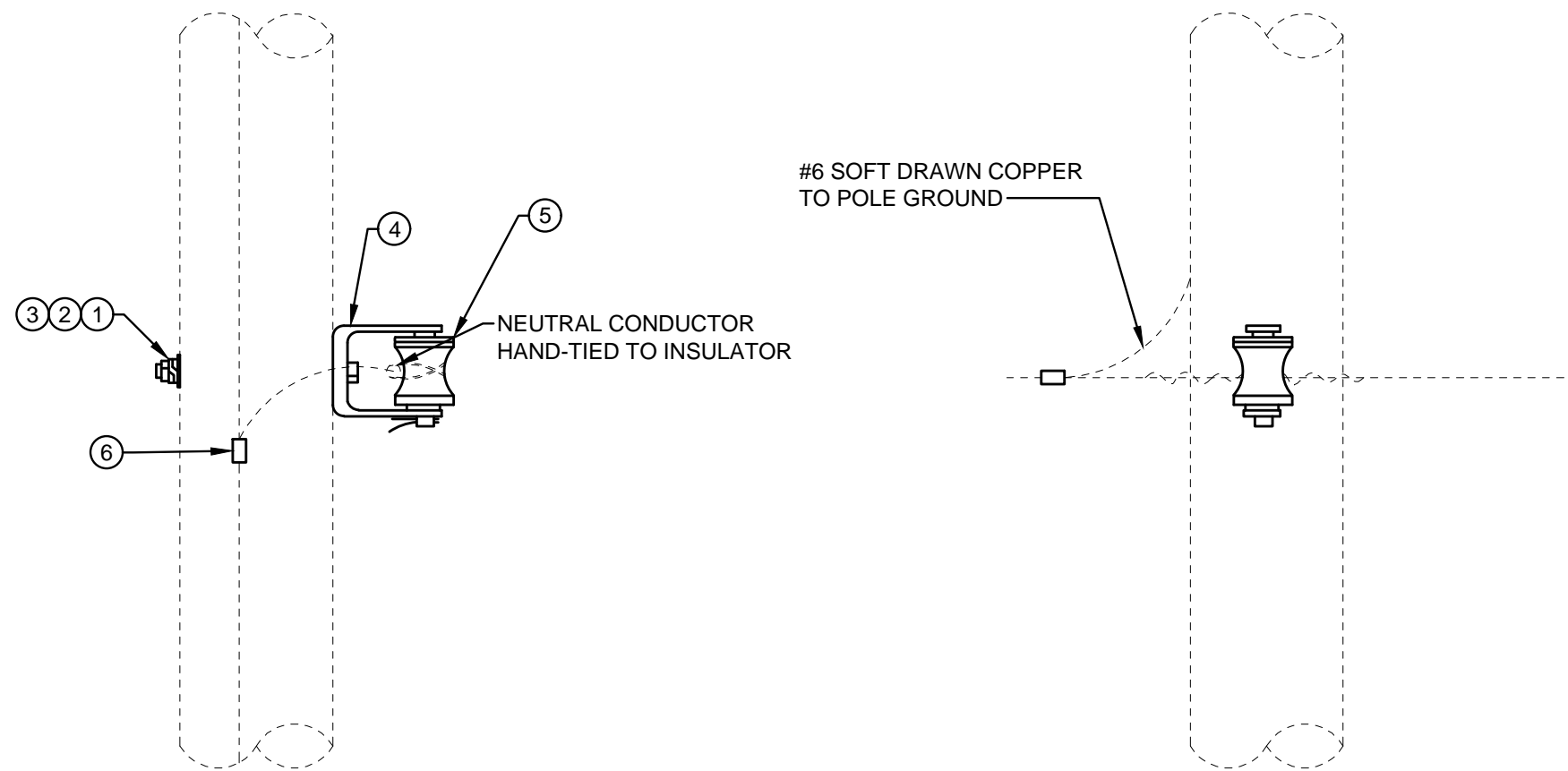
III. Installation

- A. The installation shall be as shown on drawing TDMIS-405.
- B. Installation shall include sag and guy adjustments as required to meet clearance requirements of the NESC and any local zoning codes.
- C. Conductor connections shall be completed and operational.

IV. Method of Measurement

Shall be per each completed assembly including bracket, bolts, washers, conductor and ground connections, tools, labor, equipment, and all miscellaneous hardware required for a complete and operational module.

CITY OF COLUMBUS DEPT. OF PUBLIC UTILITIES – DIVISION OF POWER PRIMARY NEUTRAL TANGENT ASSEMBLY		
DRAWN BY: AEC	DATE: 01/01/2018	TDMIS-405
APPROVED: <i>[Signature]</i>		
	SHEET 1 of 2	



**DETAIL 1
SIDE VIEW**

**DETAIL 2
FRONT VIEW**

ITEM LIST

ITEM #	DESCRIPTION	PART #	QTY.
①	BOLT, 5/8"XLENGTH AS REQ.	42369	1
②	WASHER, SPRING LOCK, 11/16" HOLE, DOUBLE COIL	18895	1
③	WASHER, SQUARE CURVED, 2 1/4"X2 1/4"X3/16", 11/16" HOLE	18901	1
④	CLEVIS, PRIMARY	*	1
⑤	INSULATOR, SPOOL	20242	1
⑥	CONNECTOR, COMPRESSION, H TAP, SIZE AS REQUIRED	*	1

CITY OF COLUMBUS, OHIO
DEPT. OF PUBLIC UTILITIES - DIVISION OF POWER

PRIMARY NEUTRAL TANGENT ASSEMBLY

DRAWN BY: AEC DATE: 01/01/2018

APPROVED: *[Signature]*

SCALE: NTS SHEET: 2 OF 2

TDMIS-405