

Transmission & Distribution
Material & Installation Specification

Secondary, Neutral and Messenger Support Assemblies

I. Quantity

The base bid shall include the indicated number of assemblies as shown or required, furnished, and installed as hereinafter specified.

II. Material

- A. Service drop hardware shall consist of a 3" or 4" spool insulator mounted in a galvanized clevis and a wedge clamp appropriate for the size of the duplex, triplex or quadplex messenger/neutral conductor.
- B. Line angles over 30 degrees shall be accomplished with two (2) clevis, spool, and wedge clamp assemblies as in "A" above.
- C. Connector shall be H-Tap type, copper only, for copper to copper connections. Copper to aluminum or aluminum to aluminum shall be aluminum H-Tap type with antioxidant factory applied within grooves.
- D. Copper conductors shall be dead ended with bronze strain clamps appropriate to the conductor size and span length.
- E. All steel hardware to be hot dipped galvanized.

III. Installation

- A. The installation shall be as shown on drawing TDMIS-500.
- B. Installation shall include sag and guy adjustments as required to meet clearance requirements of the NESC and any local zoning codes.
- C. Conductor connections shall be completed and operational.

IV. Method of Measurement

Shall be per each completed assembly including bracket, bolts, washers, conductor and ground connections, tools, labor, equipment and all miscellaneous hardware required for a complete and operational module.

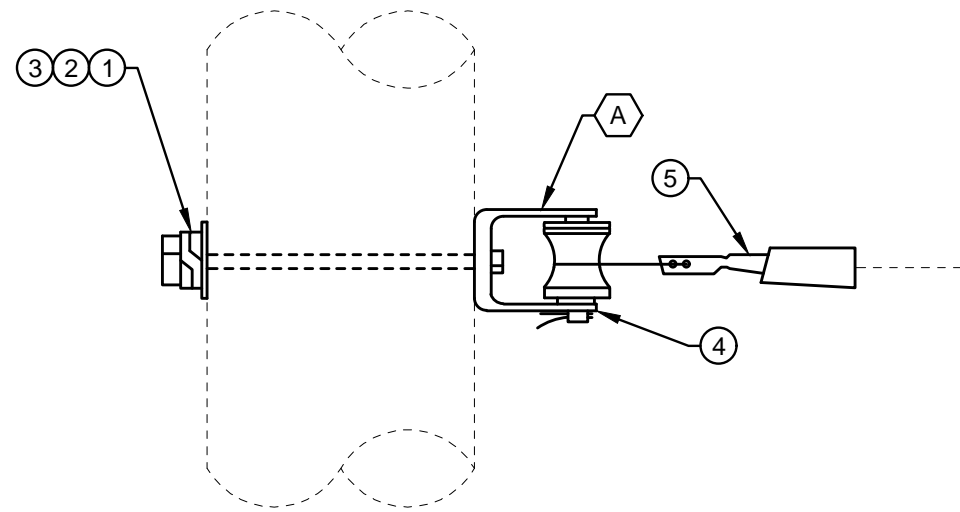
V. Basis of payment

Items	Unit	Description
TDMIS-500	Each	Secondary, neutral and messenger support assembly

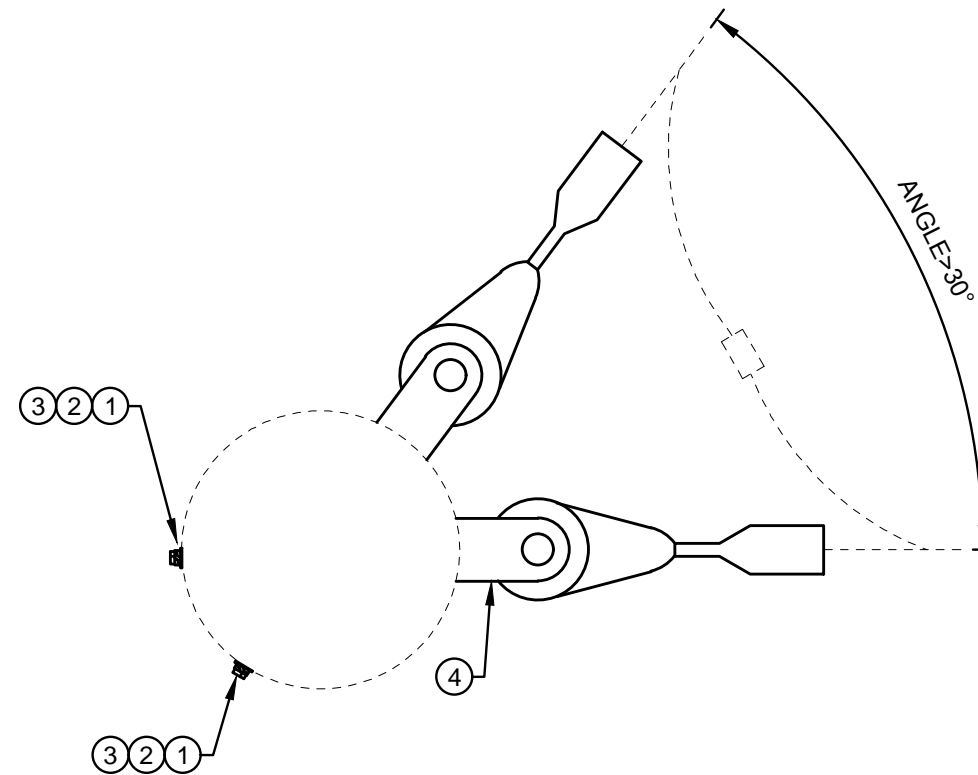
CITY OF COLUMBUS DEPT. OF PUBLIC UTILITIES – DIVISION OF POWER SECONDARY, NEUTRAL AND MESSENGER SUPPORT ASSEMBLIES		
DRAWN BY: AEC	DATE: 01/01/2018	TDMIS-500
APPROVED: <i>[Signature]</i>		
SHEET 1 of 2		

CODED NOTES:

A THE CABLE PULLING ON THE SPOOL INSULATOR, 3" AND 4", IS LIMITED TO 1500 AND 2250 LBS MAXIMUM TENSION, RESPECTIVELY. THE NESC PORCELAIN SAFETY FACTOR IS INCLUDED IN THESE LOAD RATINGS.



DETAIL 1
INSULATOR DEADEND - CLEVIS



DETAIL 2
ANGLES OVER 30°, TWO CLEVIS INSULATOR

ITEM LIST

ITEM #	DESCRIPTION	PART #	QTY.
①	BOLT, MACHINE, 5/8"XLENGTH AS REQ.	42369	AS REQ.
②	WASHER, SPRING LOCK, 11/16" HOLE, DOUBLE COIL	18895	AS REQ.
③	WASHER, SQUARE CURVED, 2 1/4"X2 1/4"X3/16", 11/16" HOLE	18901	AS REQ.
④	INSULATOR, CLEVIS	19285	AS REQ.
⑤	WEDGE CLAMP, #2 THRU #6	20224	AS REQ.

CITY OF COLUMBUS, OHIO
DEPT. OF PUBLIC UTILITIES - DIVISION OF POWER

SECONDARY, NEUTRAL AND MESSENGER
SUPPORT ASSEMBLY

DRAWN BY: AEC DATE: 01/01/2018

APPROVED: *[Signature]*

SCALE: NTS

SHEET: 2 OF 2

TDMIS-500