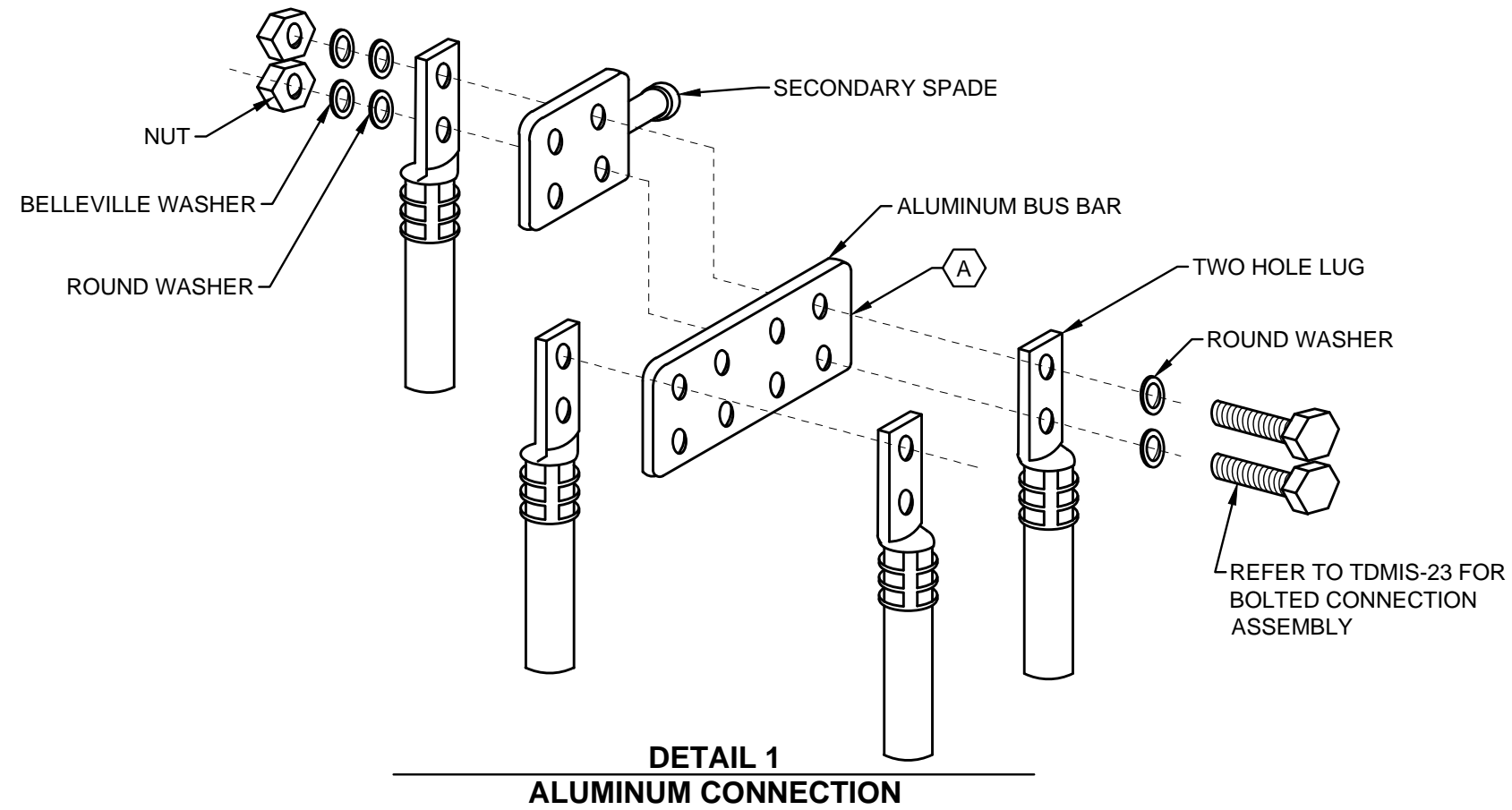


CODED NOTES:

A ALUMINUM BUS BAR IS ONLY REQUIRED WHEN MORE THAN FOUR TERMINAL LUG ARE USED.



THIS DRAWING IS FOR REFERENCE ONLY

CITY OF COLUMBUS, OHIO DEPT. OF PUBLIC UTILITIES - DIVISION OF POWER	
SECONDARY TRANSFORMER CONNECTION ALUMINUM CONNECTION	
DRAWN BY: AEC	DATE: 01/01/2018
APPROVED: <i>[Signature]</i>	TDMIS-802
SCALE: NTS	