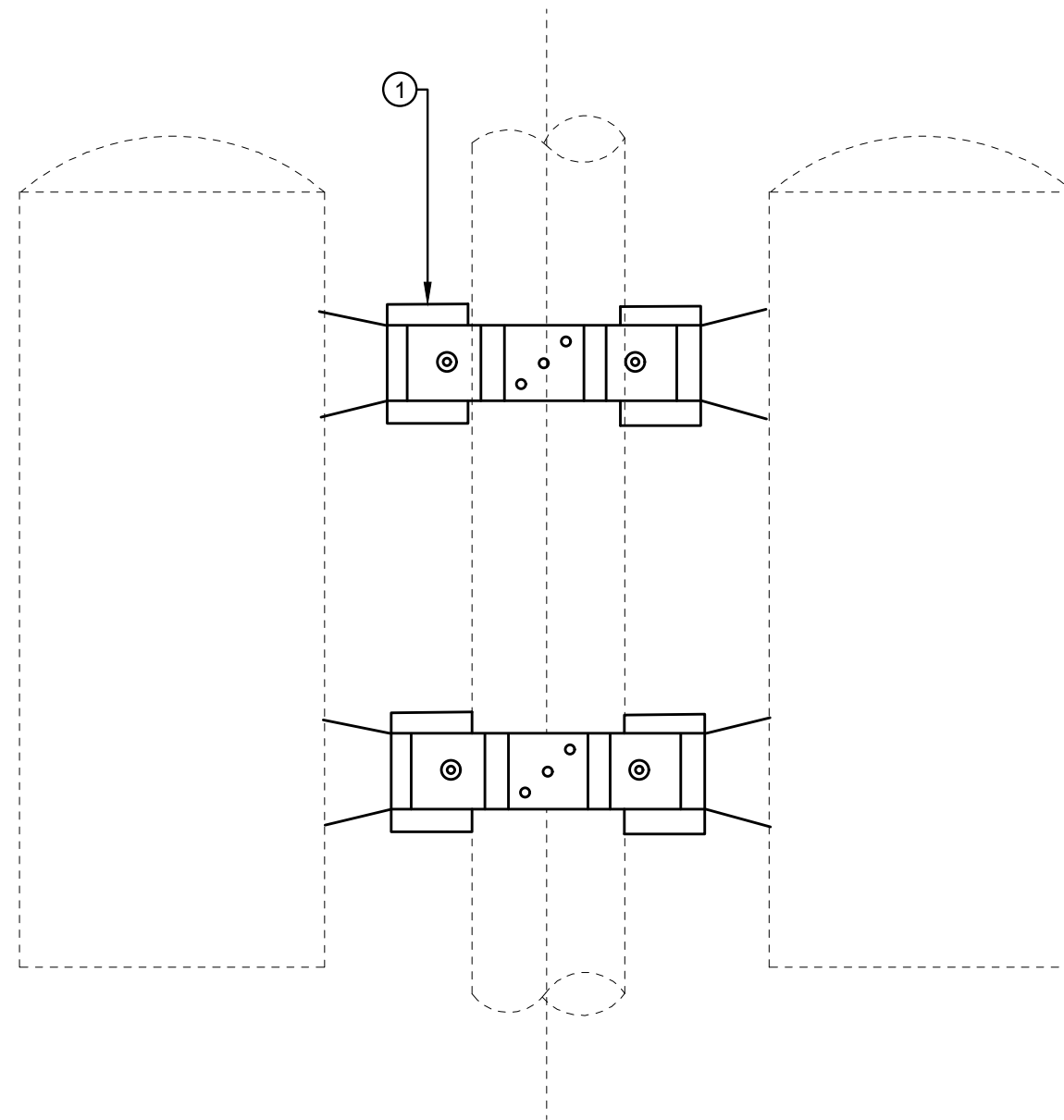


GENERAL NOTES:

1. ALL HARDWARE TO ASSEMBLE CLUSTER MOUNT BRACKETS AND TRANSFORMER WITH EITHER ANSI TYPE A OR B LUGS; INCLUDED WITH BRACKET WHEN PURCHASED.
2. ONLY TWO TRANSFORMERS SHOWN



DETAIL 1
CLUSTER TYPE MOUNTING BRACKET

SCHEDULE

ITEM #	SUFFIX NO.	DESCRIPTION	DOP PART#	MAX RATINGS
1	1	7 3/4" TO 12 3/4" DIA. POLE RANGE	19269	5000 LBS
1	2	9 1/2" TO 19" DIA. POLE RANGE	19270	8000 LBS

ITEM LIST

ITEM #	DESCRIPTION	DOP PART #	QTY.
①	BRACKET CLUSTER MOUNT, FOR TWO OR THREE TRANSFORMERS	SEE SCH	1

CITY OF COLUMBUS, OHIO
DEPT. OF PUBLIC UTILITIES - DIVISION OF POWER

**CLUSTER TYPE MOUNTING BRACKET
DETAILS
MPCM**

DRAWN BY: AEC	DATE: DATE
APPROVED: <i>[Signature]</i>	
SCALE: NONE	SHEET: 1 OF 1

TDMIS-803