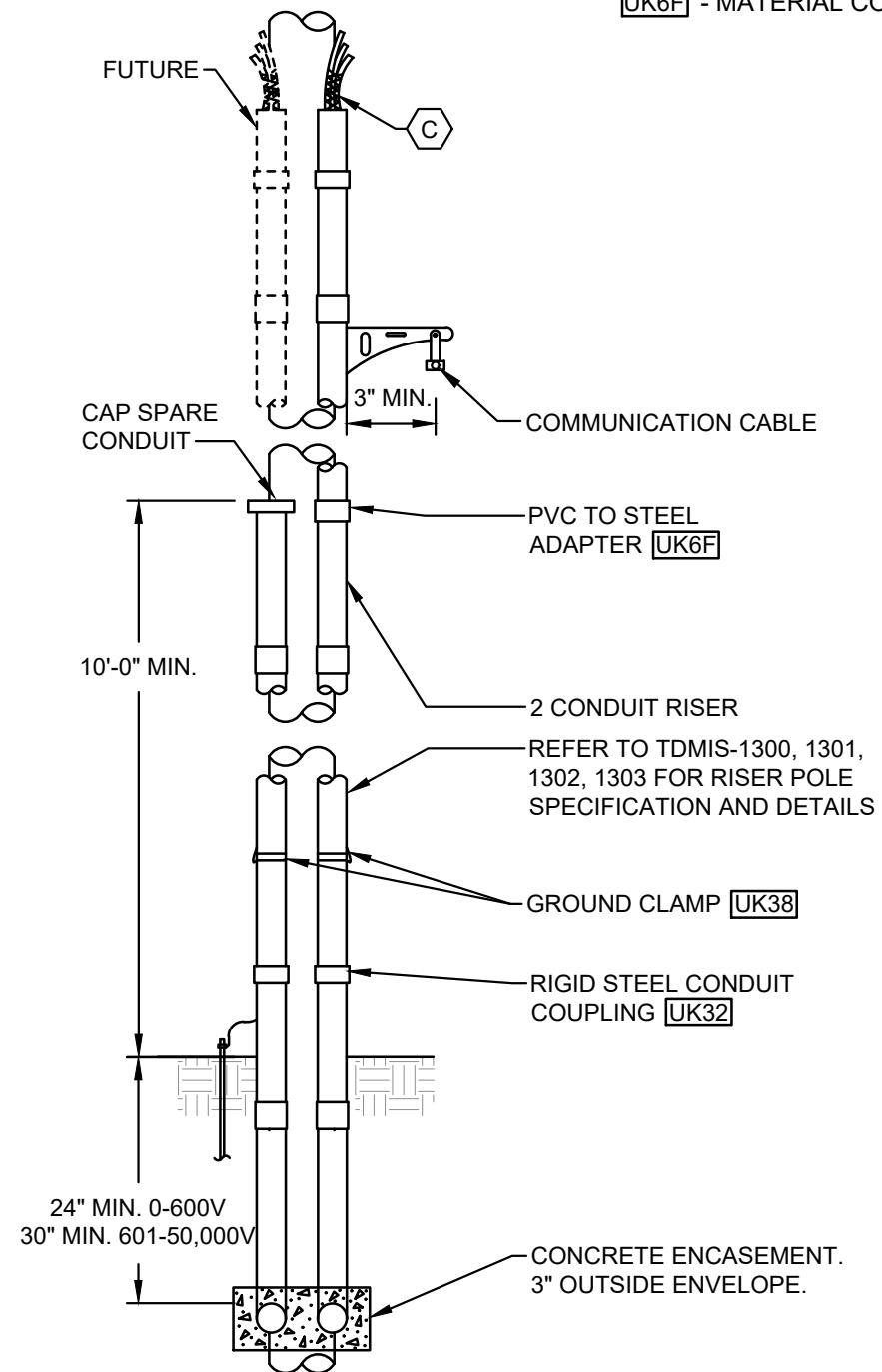
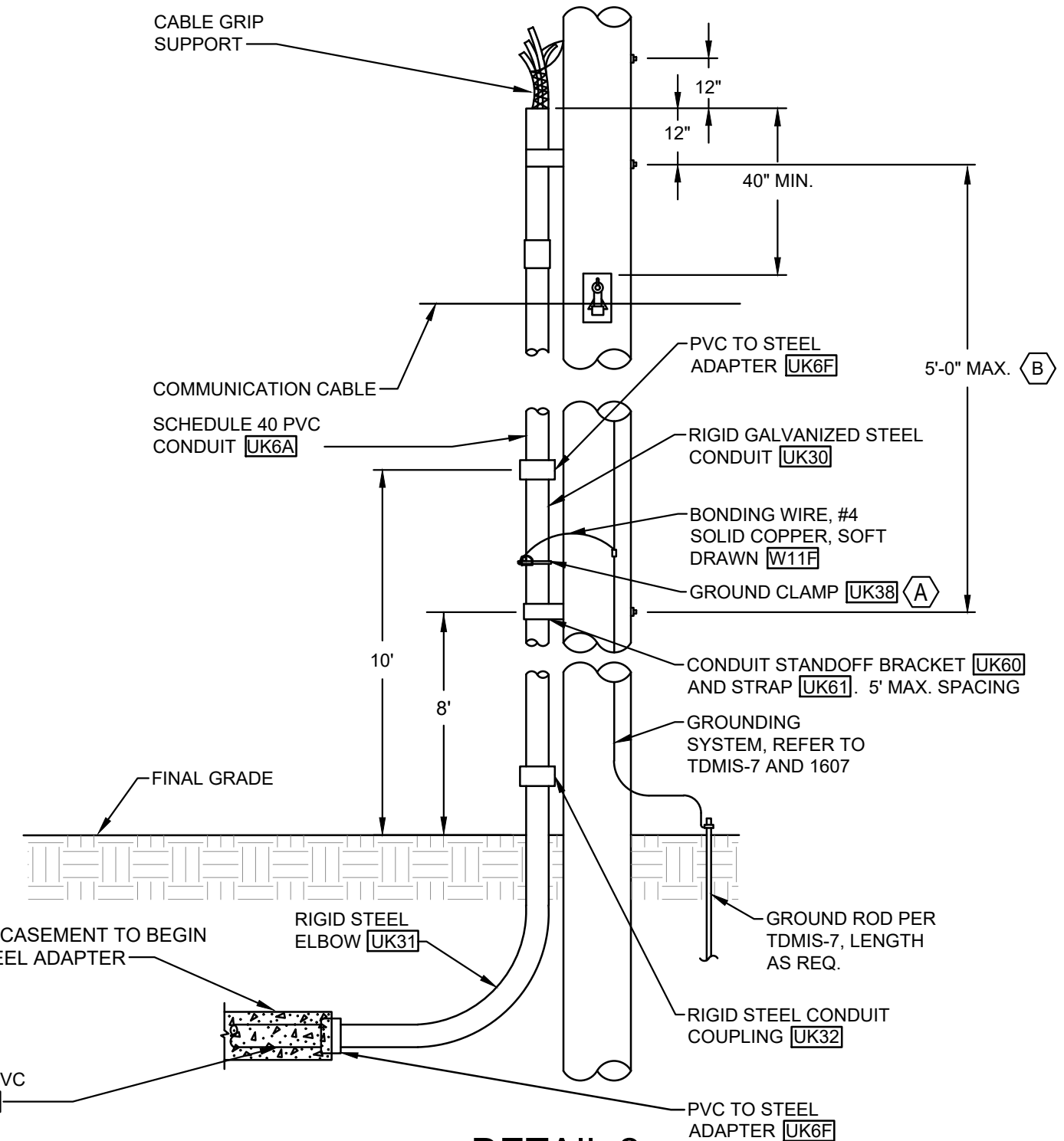


UK6F - MATERIAL CODE. REFER TO TDMIS-2000.



**DETAIL 1
ELEVATION**



**DETAIL 2
ELEVATION**

CODED NOTES:

- (A) GROUND CLAMP SHALL BE INSTALLED BELOW THE TOP OF THE RIGID STEEL CONDUIT AND ABOVE THE RISER BRACKET.
- (B) CONDUIT SUPPORTS TO BE EVENLY SPACED AS REQUIRED. CONDUIT SUPPORTS SHALL BE INSTALLED NOT MORE THAN 5' O.C. AND WITHIN 12" OF TOP OF CONDUIT. INSTALL BOTTOM CONDUIT SUPPORT NO GREATER THAN 8'-0" ABOVE GRADE.
- (C) GRIP AND GRIP SUPPORT ASSEMBLY ARE NOT REQUIRED FOR PRIMARY RISERS WITH CABLE #4/0 AND SMALLER.

CITY OF COLUMBUS, OHIO DEPT. OF PUBLIC UTILITIES - DIVISION OF POWER	
RISER POLE	
DRAWN BY: AEC	DATE: 09/07/2018
APPROVED: R. SPRITE	<i>[Signature]</i>
SCALE: NTS	SHEET: 1 OF 2
TDMIS-1001	

REFERENCE LIST

TDMIS	DESCRIPTION
1	WOOD POLES
7	OVERHEAD DISTRIBUTION CIRCUIT GROUNDING
1106	CABLE GRIPS
1300	SINGLE PHASE CONDUCTOR-200AMP (ONE PHASE CONDUCTOR)
1301	SINGLE PHASE CONDUCTOR-200AMP (TWO PHASE CONDUCTORS)
1302	THREE PHASE PRIMARY RISER- 200 AMP
1303	THREE PHASE PRIMARY RISER- 600 AMP
1607	GROUND ROD TEST
2000	MATERIAL LIST

FOR NEW CUSTOMER INSTALLATIONS

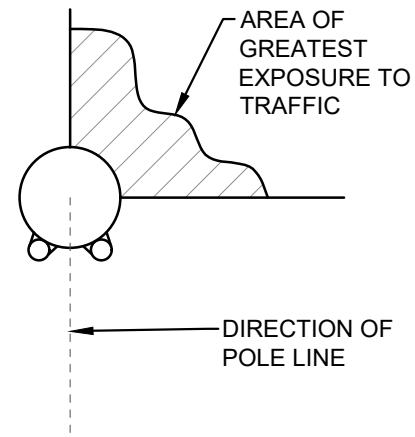
CUSTOMER IS RESPONSIBLE FOR INSTALLING:

1. ALL UNDERGROUND CONDUITS, ELBOWS AND CONNECTIONS.
2. CONCRETE ENCASEMENT OF DUCTBANK (AS REQUIRED).
3. FIRST SECTION OF RIGID STEEL RISER ABOVE GRADE (10').
4. STEEL TO PVC COUPLING.
5. FIRST SECTION OF PVC CONDUIT ABOVE GRADE (10').
6. STANDOFF BRACKETS & STRAPS FOR CUSTOMER INSTALLED CONDUIT.
7. GROUND STRAP AND BOND WIRE.
8. GROUND ROD.

DIVISION OF POWER IS RESPONSIBLE FOR INSTALLING:

1. POLE.
2. CONDUIT MORE THAN 20' ABOVE GRADE.
3. STANDOFF BRACKETS & STRAPS FOR CONDUIT MORE THAN 20' ABOVE GRADE.
4. POLE GROUNDING SYSTEM.

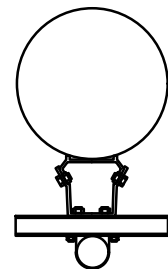
ALL CUSTOMER INSTALLATIONS MUST BE INSPECTED BY DIVISION OF POWER ENGINEERING PRIOR TO ACCEPTANCE.



LOCATION OF RISER

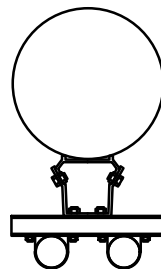
NUMBER OF
CONDUITS -

1



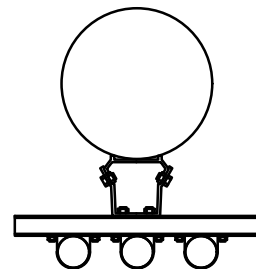
UK60A

2



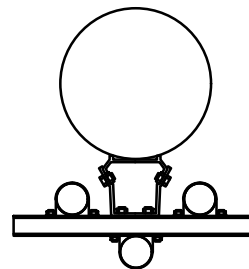
UK60A

3



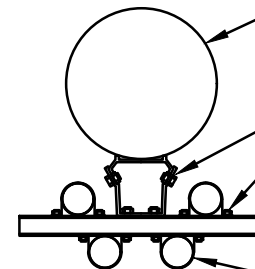
UK60B

3



UK60B

4



UK60B

POLE

STANDOFF BRACKET AND STRAP

CONDUIT

STANDOFF BRACKET CONFIGURATIONS

CITY OF COLUMBUS, OHIO
DEPT. OF PUBLIC UTILITIES - DIVISION OF POWER

RISER POLE

DRAWN BY: AEC DATE: 09/07/2018

APPROVED: R. SPRITE *[Signature]*

SCALE: NTS SHEET: 2 OF 2

TDMIS-1001