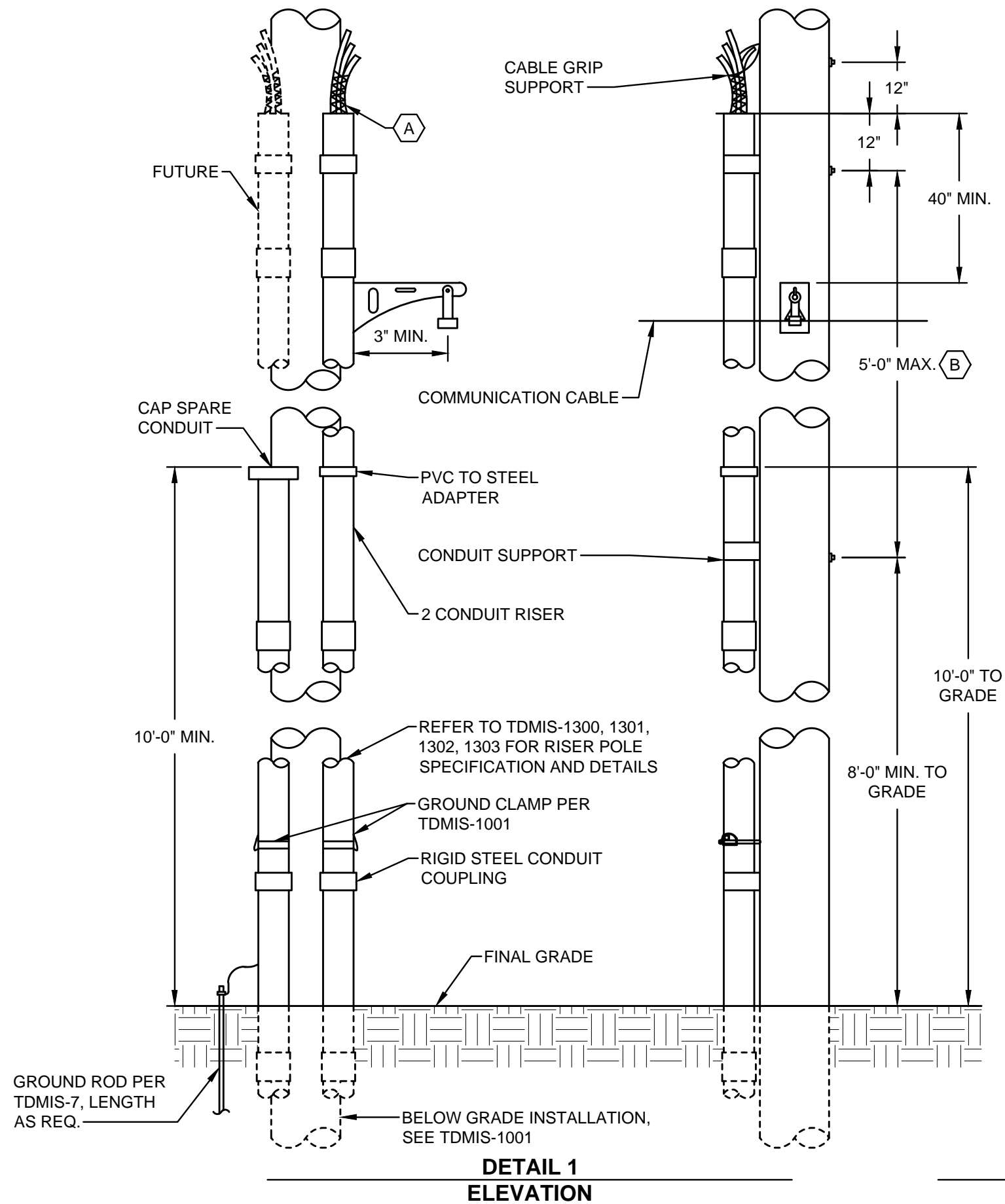
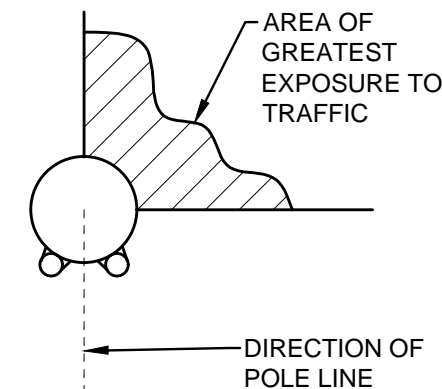


CODED NOTES:

- (A)** GRIP AND GRIP SUPPORT ASSEMBLY ARE NOT REQUIRED FOR PRIMARY RISERS WITH CABLE 4/0 AND SMALLER.
- (B)** CONDUIT SUPPORTS TO BE EVENLY SPACED AS REQUIRED. CONDUIT SUPPORTS SHALL BE INSTALLED NOT MORE THAN 5' OC. AND WITHIN 12" OF TOP OF CONDUIT.



**DETAIL 1
ELEVATION**



**DETAIL 2
LOCATION OF RISER
REFERENCE ONLY**

REFERENCE LIST	
TDMIS	DESCRIPTION
7	OVERHEAD DISTRIBUTION CIRCUIT GROUNDING
1001	TERMINATION OF UNDERGROUND CONDUIT AT RISER POLE
1106	CABLE GRIPS
1300	SINGLE PHASE PRIMARY RISER-200 AMP (1 PH CONDUCTOR)
1301	SINGLE PHASE PRIMARY RISER-200 AMP (2 PH CONDUCTOR)
1302	THREE PHASE PRIMARY RISER-200 AMP
1303	THREE PHASE PRIMARY RISER-600 AMP
CITY OF COLUMBUS, OHIO DEPT. OF PUBLIC UTILITIES - DIVISION OF POWER	
MULTIPLE CONDUIT RISER	
02S0074	
DRAWN BY: AEC	DATE: 01/01/2018
APPROVED: <i>[Signature]</i>	TDMIS-1003
SCALE: NTS	