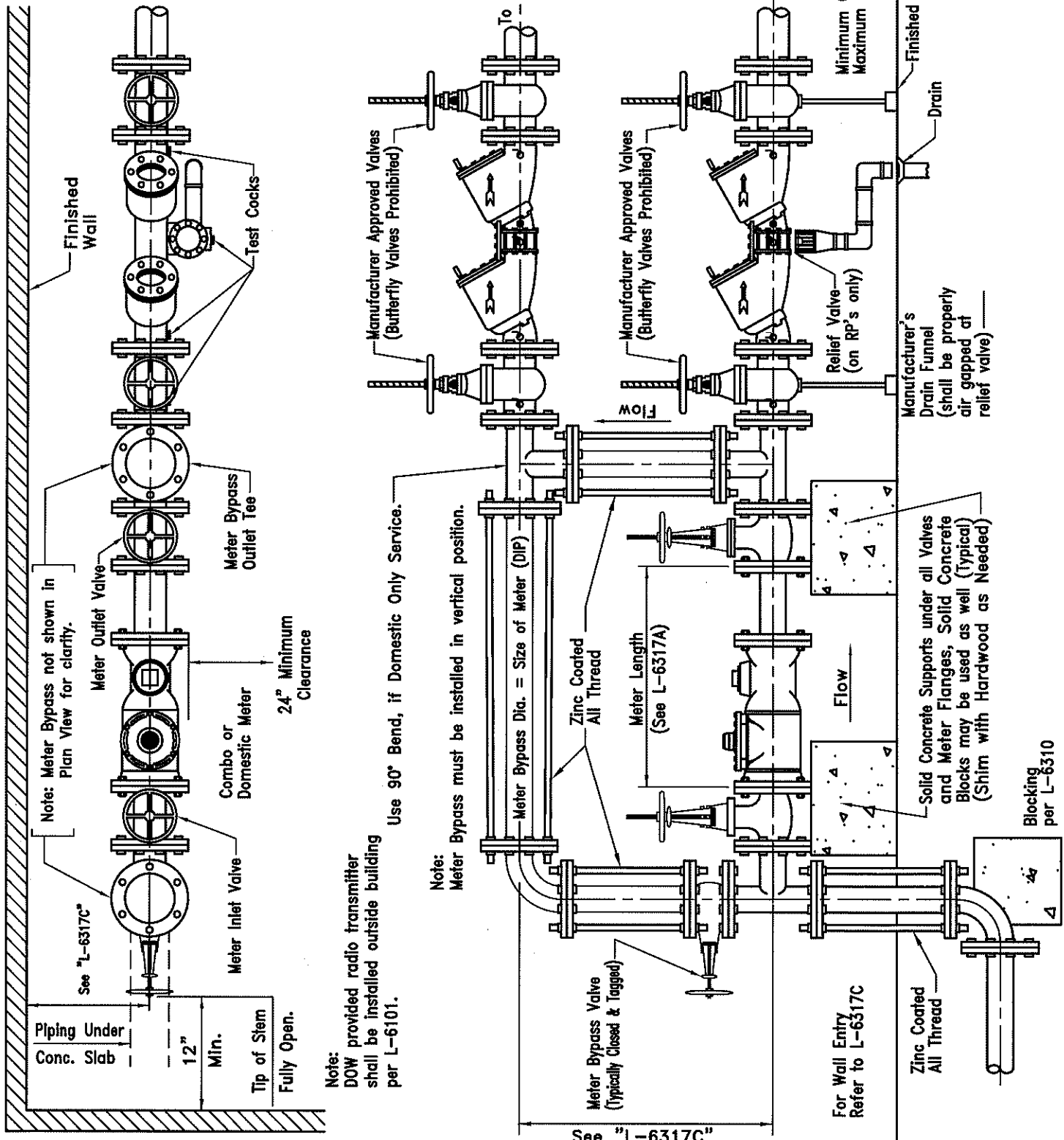


NOTE:

Refer to Division of Water Standard Details "L-6317C", "L-9002A" & "L-9002B" for additional information. Plan Designer shall be responsible to insure that all bends, tees, valves, meters and/or backflow prevention assembly lengths fit within the allotted space.



L-9002F.Dwg Revision Date: 1/26/18

CITY OF COLUMBUS
DEPARTMENT OF PUBLIC UTILITIES
DIVISION OF WATER

APPROVED:
RC Waterfield 1-26-18
ADMINISTRATOR DATE

STANDARD DETAIL
TYPICAL METER SETTING
WITH BACKFLOW PREVENTER
(INSIDE BUILDING ONLY)
2" THRU 12" METERS

