

**I. MATERIALS**

**A. POLE**

THE STREET LIGHT POLE SHALL CONSIST OF A SHARP FLUTED TAPERED SHAFT, 27'-0" STEEL SHAFT HAVING A BASE WELDED TO THE LOWER END AND BE COMPLETE WITH FOUR (4) HOT DIPPED GALVANIZED STEEL ANCHOR BOLTS. THE ANCHOR BASE SHALL HAVE FOUR SLOTTED HOLES TO ACCOMMODATE A 13" TO 15" BOLT CIRCLE. EACH POLE SHALL HAVE ONE (1) FIXED FLAGSTAFF HOLDER MOUNTED AT 19' ABOVE BASE PLATE ON THE STREET SIDE AT A 45 DEGREE ANGLE. THE POLE SHALL ALSO INCLUDE BANNER ARMS ON STREET SIDE AND SIDEWALK SIDE.

THE COMPLETE UNIT SHALL BE DESIGNED FOR WIND LOADING OF AT LEAST 80 MPH 1.3 GUST PER AASHTO 1994. THE POLE SHAFT WILL HAVE A SERVICE OPENING CUT INTO IT. THE SIZE OF THE OPENING WILL BE 5" X 9" IN SIZE AND WILL BE COVERED BY THE CAST DECORATIVE BASE WHEN INSTALLED. THE SERVICE OPENING WILL ORIENTED 180 DEGREES TO THE LUMINAIRE ORIENTATION WHEN STANDING IN THE STREET. A GROUNDING LUG WILL BE BRAIZED TO THE INSIDE OF THE POLE SHAFT OPPOSITE THE SERVICE OPENING.

THE BANNER ARMS SHALL BE 1-1/16" O.D. SCHEDULE 80 PIPE AND EXTEND THROUGH POLE WITH SET COLLARS. BANNER ARMS WILL BE MOUNTED AT 18' AND 13' AND WILL BE 30" IN LENGTH. THEY WILL BE ORIENTED PERPENDICULAR TO CURB LINE. EACH BANNER ARM SHALL HAVE 2" DIAMETER DECORATIVE BALL ON EACH END OF THE BANNER ARM. THE FLOWER BASKET ARMS WILL BE MOUNTED AT 12' AND WILL BE ORIENTED PARALLEL TO THE CURB LINE. IT SHALL BE MADE LIKE THE BANNER ARMS.

THE CLAMSHELL BASE SHALL BE ALUMINUM AND IN NO MORE THAN TWO (2) PARTS. THE CLAMSHELL BASE SHALL BE FREE FROM WARPING AND FIT TOGETHER UNIFORMLY WITHOUT BINDING OR GAPS AT THE POINT OF JUNCTURE. THE CLAMSHELL BASE SHALL HAVE A SINGLE HAND HOLE OPENING. THE HANDHOLE OPENING IN THE CLAMSHELL BASE MUST ALLOW ACCESS TO WIRING WITHOUT REMOVING THE COMPLETE CLAMSHELL BASE FROM THE POLE SHAFT.

FOUR (4) 1"x36"+4" HIGH STRENGTH, HOT DIPPED GALVANIZED, HOOKED STEEL ANCHOR BOLTS, FITTED WITH A HEX NUT, SHALL BE FURNISHED WITH THE POLES. EACH ANCHOR BOLT BE THREADED AT THE TOP END. THREADED ENDS AND ALL NUTS SHALL BE GALVANIZED. ANCHOR BOLTS SHALL BE CAPABLE OF RESISTING AT YIELD STRENGTH STRESS THE BENDING MOVEMENT OF THE SHAFT AT ITS YIELD STRENGTH STRESS.

ALL HARDWARE (BOLTS, NUTS AND WASHERS—BUT NOT INCLUDING ANCHOR BOLTS) NOT OTHERWISE SPECIFICALLY DESIGNATED IN THIS SPECIFICATION, SHALL BE STAINLESS STEEL.

**B. BRACKET**

THE LUMINAIRE MAST ARM SHALL BE 2-3/8" O.D. SCHEDULE 80 PIPE, 8'-0" IN LENGTH WITH PROFILE AND DIMENSIONS AS SHOWN. INCLUDE A 3/4" THICK BY 1-1/2" WIDE DECORATIVE STRAP ARM SUPPORT WITH PROFILES AND DIMENSIONS AS SHOWN. PROVIDE A 3/8" WIDE X 3/4" LONG SLOTTED OPENING AT THE BOLT POINTS TO THE ARM AND POLE AS SHOWN.

**C. FINISH**

ALL METAL COMPONENTS SHALL HAVE BLACK POWDER COATED FINISH. ALL EXPOSED FASTENERS SHALL BE BLACK ANODIZED. ALL FIXTURES SHALL HAVE STANDARDIZED ALLEN HEAD SCREWS FOR THE ENTIRE UNIT. SHAFT AND BRACKET ARM ASSEMBLY SHALL BE TIRE-WRAPPED WITH A HEAVY WATER RESISTANT PAPER FOR PROTECTION DURING SHIPMENT AND INSTALLATION.

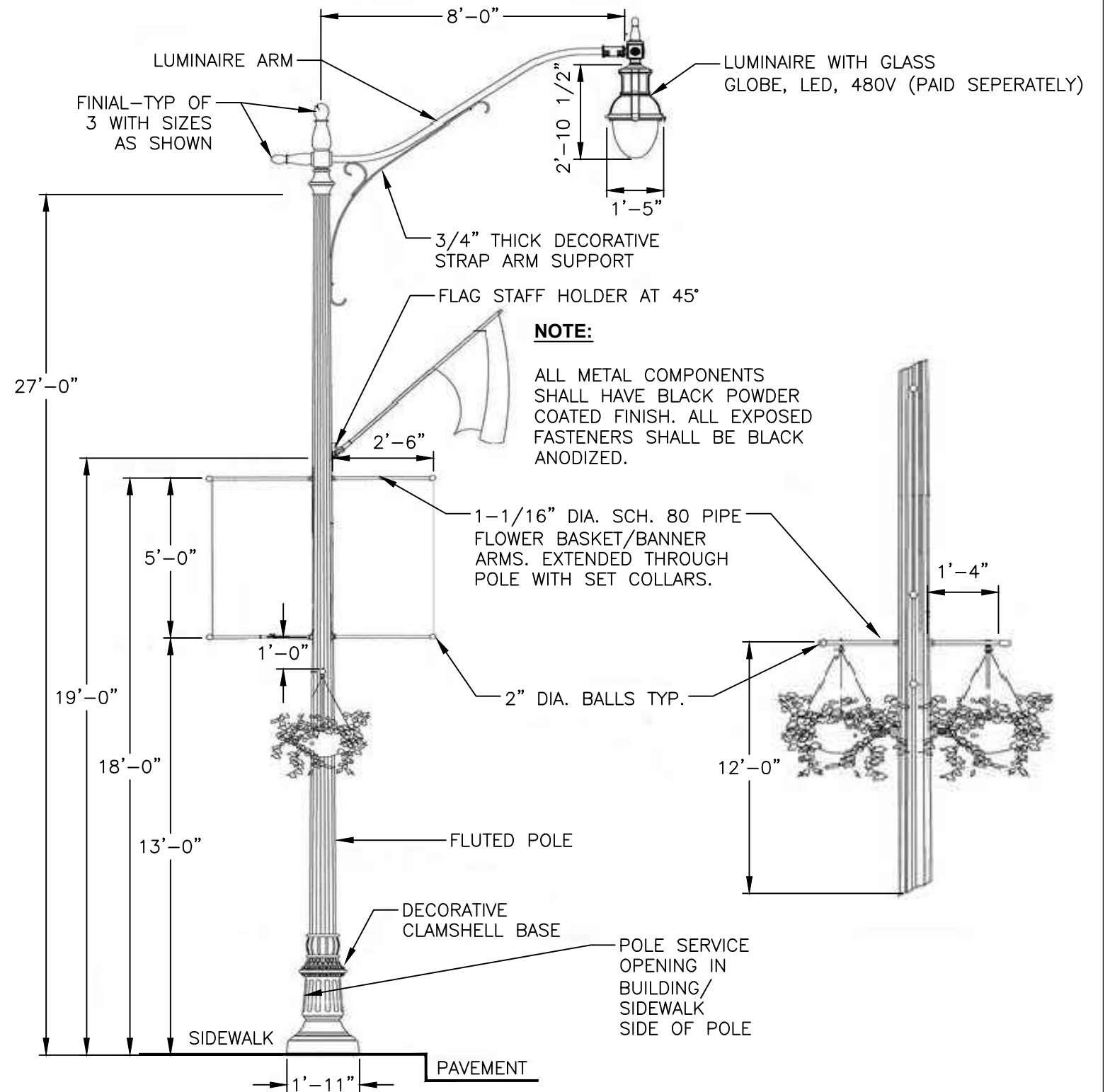
ALL POLE COMPONENTS SHALL HAVE THE MANUFACTURER NAME VISIBLY CAST INTO EACH COMPONENT.

**II. INSTALLATION**

THE POLES SHALL BE SET ON THE FOUNDATION SECURELY ANCHORED TO THE ANCHOR RODS SO THAT THE SERVICE OPENING IS OPPOSITE OF THE CURB. POLES SHALL BE PROPERLY PLUMBED BY MEANS OF SHIMS.

**III. BASIS OF PAYMENT**

ITEM	UNIT	DESCRIPTION
MIS-308	EACH	POLE, DOWNTOWN



MANUFACTURERS
HOLOPHANE
LUMEC
SUN VALLEY
SUN VALLEY/KING LUMINAIRE
STERNBERG

**MIS-308**

DEPARTMENT OF PUBLIC UTILITIES - DIVISION OF POWER  
CITY OF COLUMBUS, OHIO

**POLE, DOWNTOWN**

DRAWN BY: BEN	DATE: 1/1/2018	
APPROVED: <i>Amy R. Wilfong</i>		
SCALE: NONE	SHEET: 1 OF 1	308