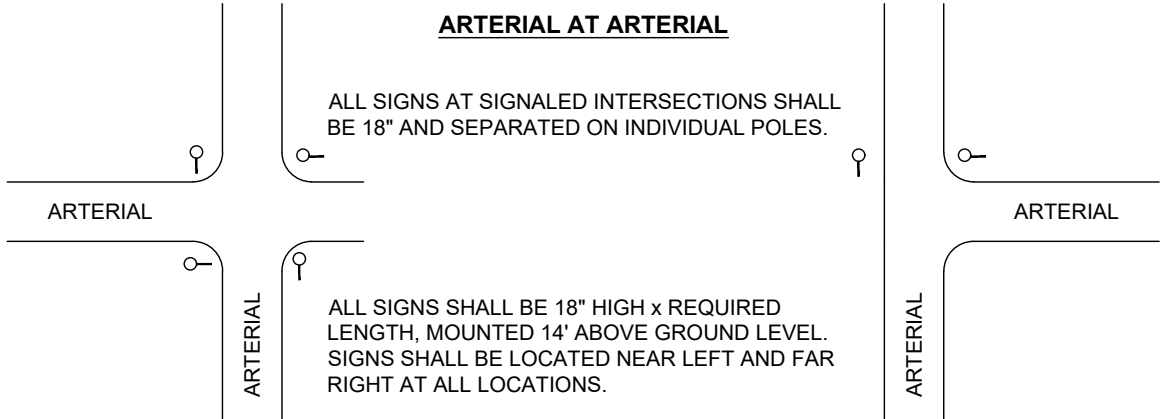


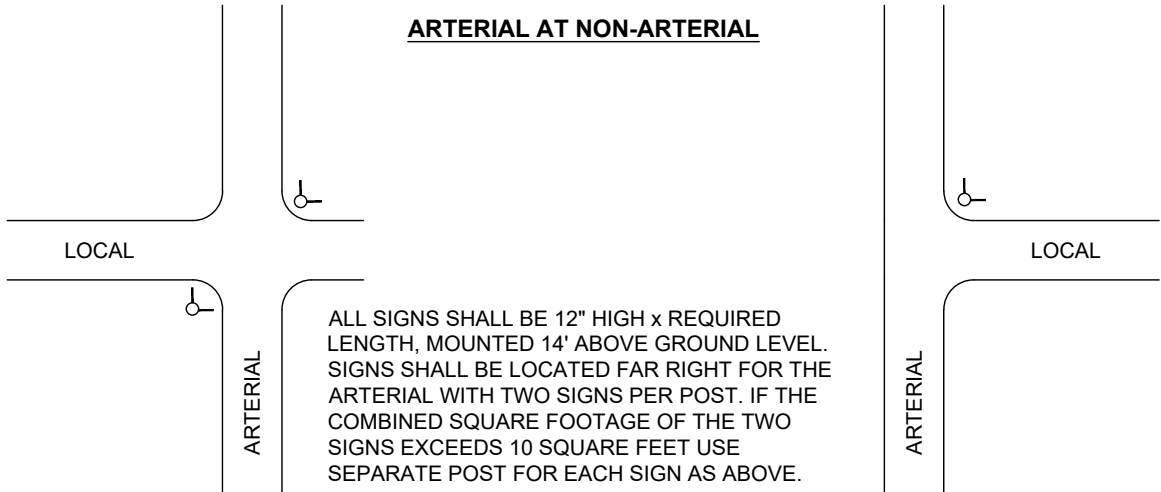
ARTERIAL AT ARTERIAL

ALL SIGNS AT SIGNALLED INTERSECTIONS SHALL BE 18" AND SEPARATED ON INDIVIDUAL POLES.



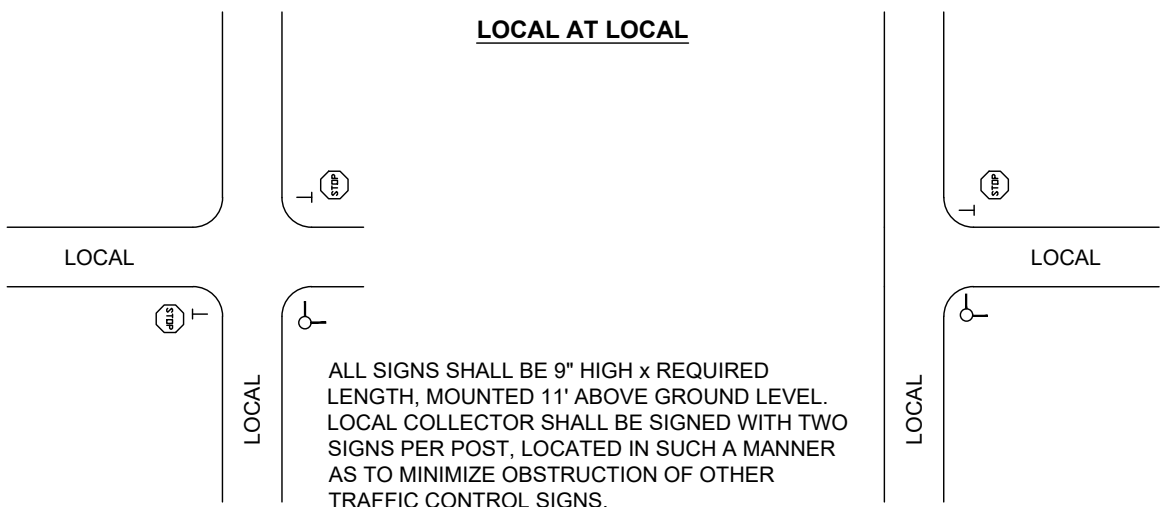
ALL SIGNS SHALL BE 18" HIGH x REQUIRED LENGTH, MOUNTED 14' ABOVE GROUND LEVEL. SIGNS SHALL BE LOCATED NEAR LEFT AND FAR RIGHT AT ALL LOCATIONS.

ARTERIAL AT NON-ARTERIAL



ALL SIGNS SHALL BE 12" HIGH x REQUIRED LENGTH, MOUNTED 14' ABOVE GROUND LEVEL. SIGNS SHALL BE LOCATED FAR RIGHT FOR THE ARTERIAL WITH TWO SIGNS PER POST. IF THE COMBINED SQUARE FOOTAGE OF THE TWO SIGNS EXCEEDS 10 SQUARE FEET USE SEPARATE POST FOR EACH SIGN AS ABOVE.

LOCAL AT LOCAL



ALL SIGNS SHALL BE 9" HIGH x REQUIRED LENGTH, MOUNTED 11' ABOVE GROUND LEVEL. LOCAL COLLECTOR SHALL BE SIGNED WITH TWO SIGNS PER POST, LOCATED IN SUCH A MANNER AS TO MINIMIZE OBSTRUCTION OF OTHER TRAFFIC CONTROL SIGNS.

PLACEMENT

STREET NAME SIGN

LOCAL COLLECTOR AND RESIDENTIAL STREETS SHALL HAVE THE SAME SIZE POST AND PLACEMENT STANDARDS.

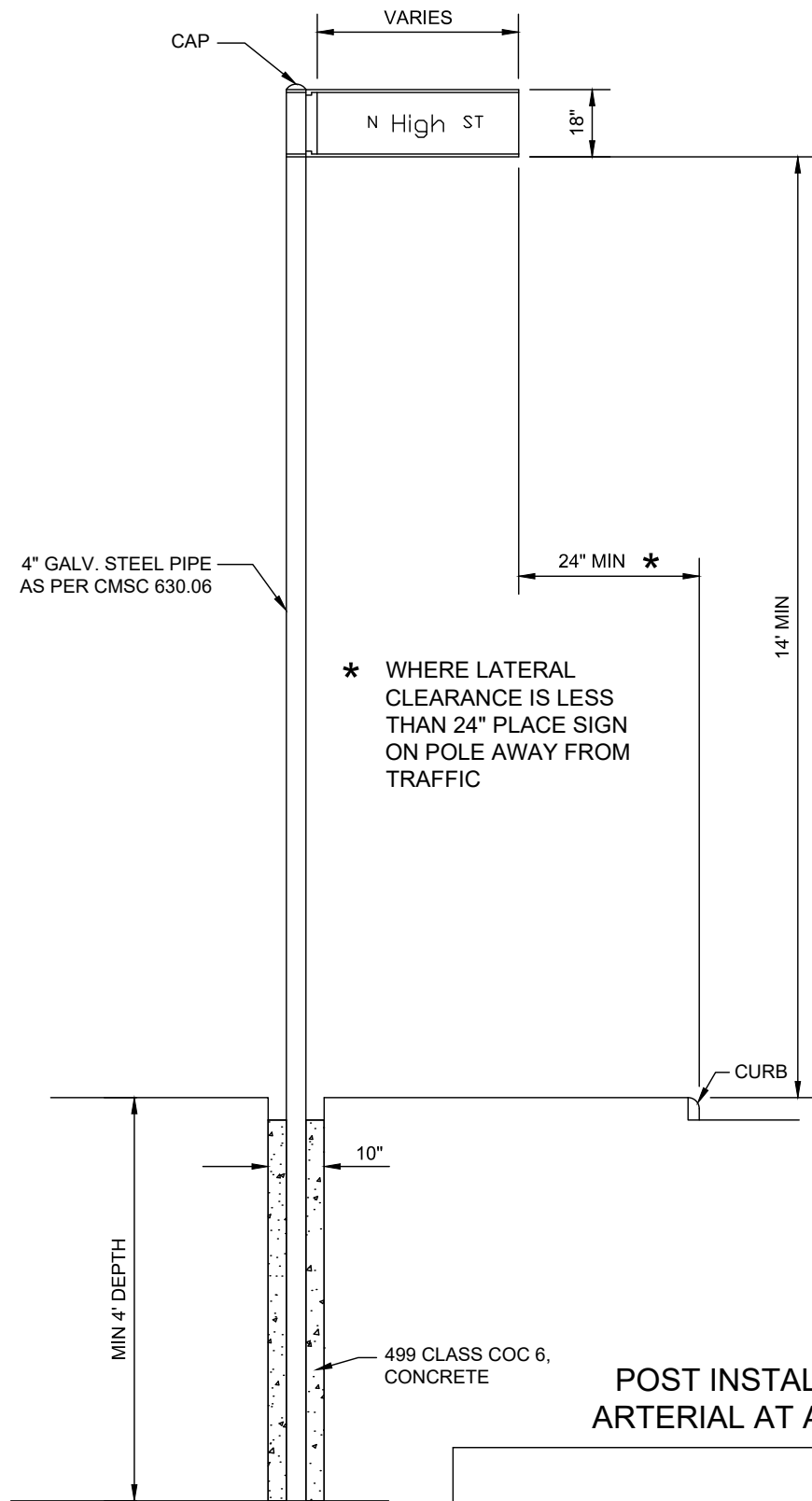
CITY OF COLUMBUS, OHIO
DEPARTMENT OF PUBLIC SERVICE
DIVISION OF DESIGN AND CONSTRUCTION

**STD DWG
2185**

CITY ENGINEER

3/30/2018

SHT 1 OF 9



DIMENSIONS SHOWN SHALL BE CONSIDERED MINIMUM DIMENSIONS FOR NEW INSTALLATIONS AS WELL AS FOR INSTALLATIONS USING EXISTING SUPPORTS SUCH AS UTILITY POLES AND TRAFFIC SIGNAL POLES.

ONLY ONE STREET NAME SIGN PER SUPPORT SHALL BE LOCATED NEAR-LEFT AND FAR-RIGHT AT ALL LOCATIONS UNLESS OTHERWISE SPECIFIED.

POST INSTALLATION
ARTERIAL AT ARTERIAL

STREET NAME SIGN

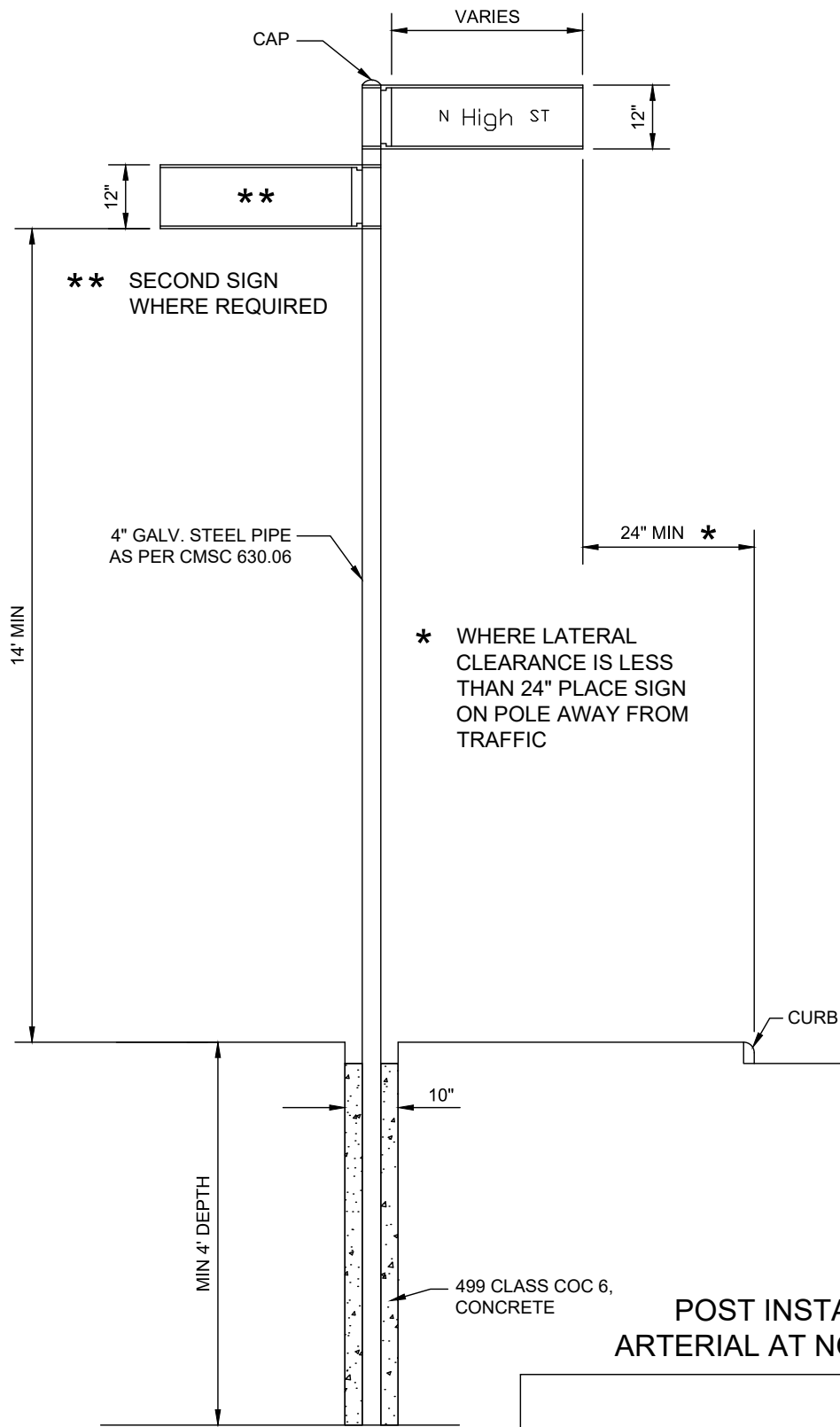
CITY OF COLUMBUS, OHIO
DEPARTMENT OF PUBLIC SERVICE
DIVISION OF DESIGN AND CONSTRUCTION

STD DWG

2185

3/30/2018

SHT 2 OF 9



** SECOND SIGN WHERE REQUIRED

4" GALV. STEEL PIPE AS PER CMSC 630.06

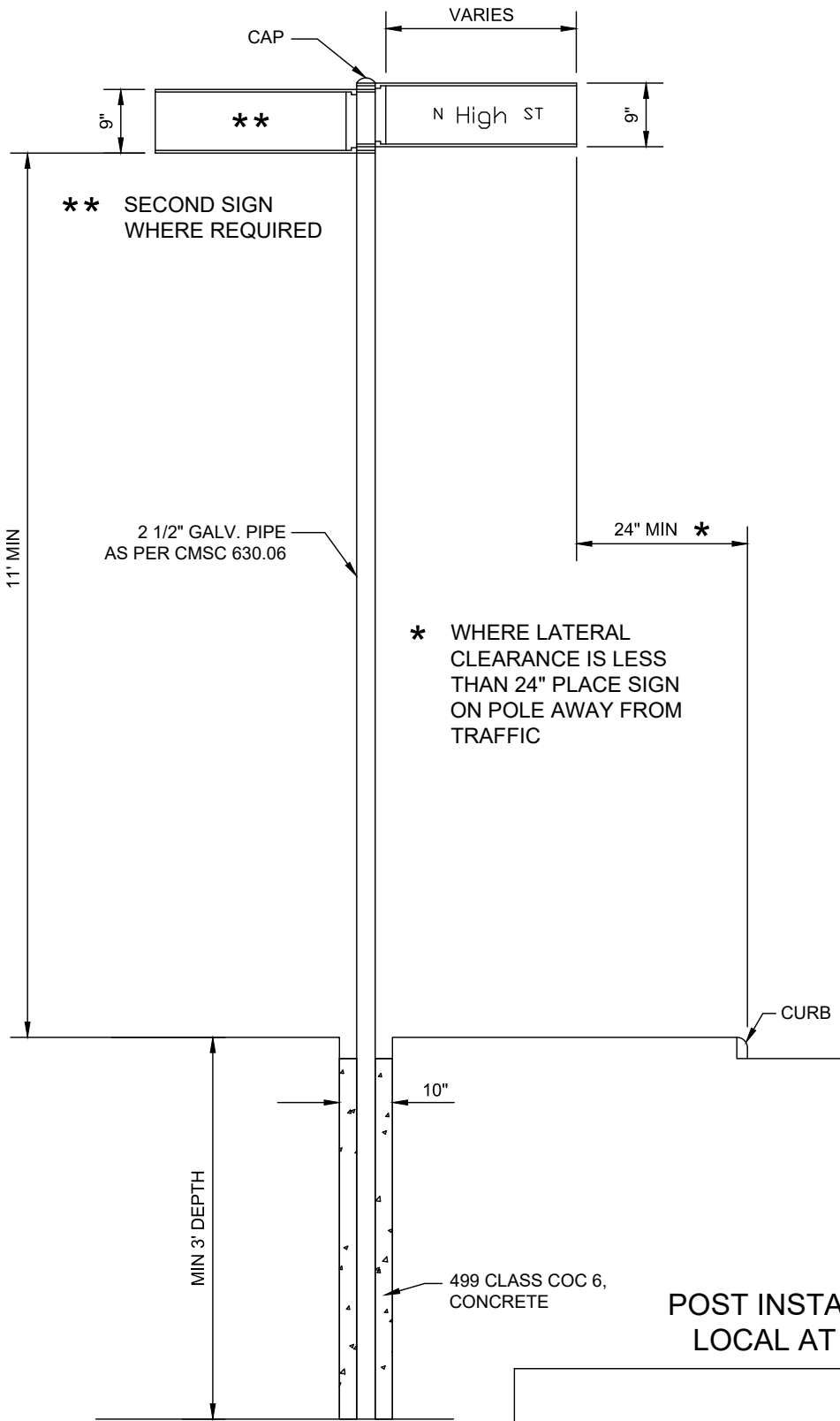
* WHERE LATERAL CLEARANCE IS LESS THAN 24" PLACE SIGN ON POLE AWAY FROM TRAFFIC

POST INSTALLATION
ARTERIAL AT NON-ARTERIAL

STREET NAME SIGN

SIGNS SHALL BE LOCATED FAR-RIGHT FOR THE ARTERIAL WITH 2 SIGNS PER SUPPORT. IF THE COMBINED SQUARE FOOTAGE EXCEEDS 10 SQUARE FEET, A SEPARATE SUPPORT SHALL BE USED FOR EACH SIGN.

CITY OF COLUMBUS, OHIO DEPARTMENT OF PUBLIC SERVICE DIVISION OF DESIGN AND CONSTRUCTION	STD DWG 2185
	3/30/2018
	SHT 3 OF 9



** SECOND SIGN
WHERE REQUIRED

2 1/2" GALV. PIPE
AS PER CMSC 630.06

* WHERE LATERAL
CLEARANCE IS LESS
THAN 24" PLACE SIGN
ON POLE AWAY FROM
TRAFFIC

CURB

10"

MIN 3' DEPTH

499 CLASS COC 6,
CONCRETE

POST INSTALLATION
LOCAL AT LOCAL

STREET NAME SIGN

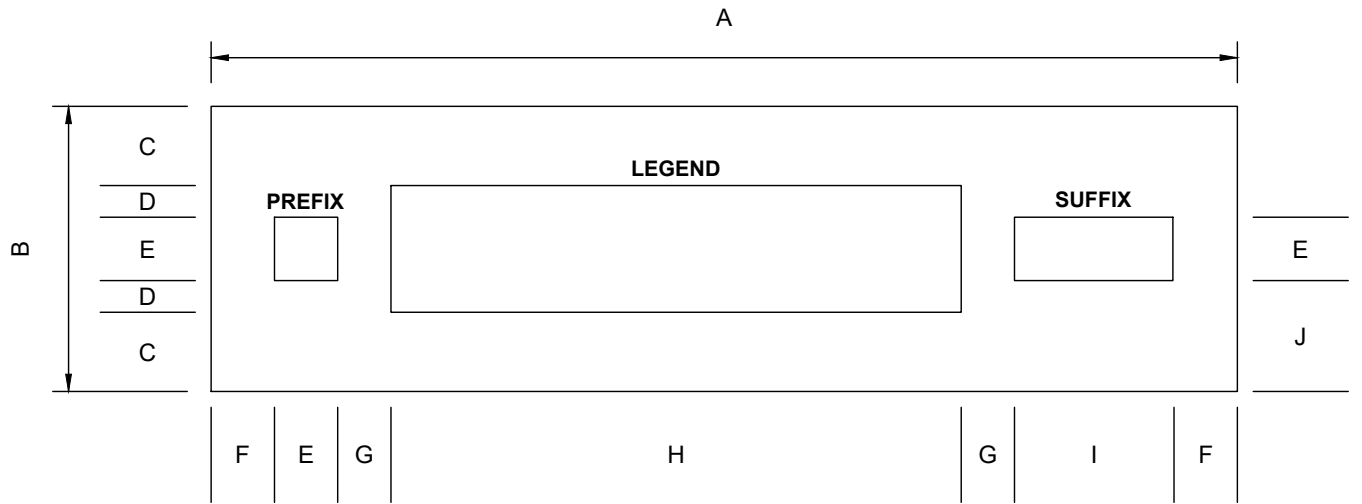
LOCAL COLLECTOR AND RESIDENTIAL STREETS
SHALL BE TREATED THE SAME.

CITY OF COLUMBUS, OHIO
DEPARTMENT OF PUBLIC SERVICE
DIVISION OF DESIGN AND CONSTRUCTION

STD DWG
2185

3/30/2018

SHT 4 OF 9



SIZE	A	B	C	D	E	F	G	H	I	J
9" SIGN	VARIABLES	9.0"	2.5"	1.0"	2.0"	2.0" MIN	2.0" MIN	VARIABLES	VARIABLES	3.5"
12" SIGN	VARIABLES	12.0"	3.0"	1.5"	3.0"	3.0" MIN	3.0" MIN	VARIABLES	VARIABLES	4.5"
18" SIGN	72.0" MAX	18.0"	5.0"	2.0"	4.0"	4.0" MIN	4.0" MIN	VARIABLES	VARIABLES	7.0"

BLADE

STREET NAME SIGN

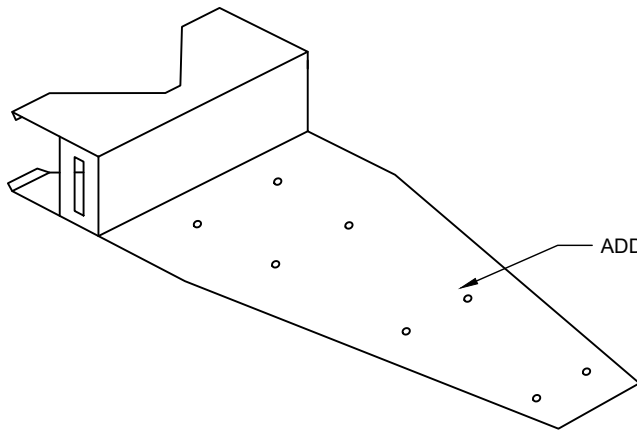
CITY OF COLUMBUS, OHIO
DEPARTMENT OF PUBLIC SERVICE
DIVISION OF DESIGN AND CONSTRUCTION

STD DWG

2185

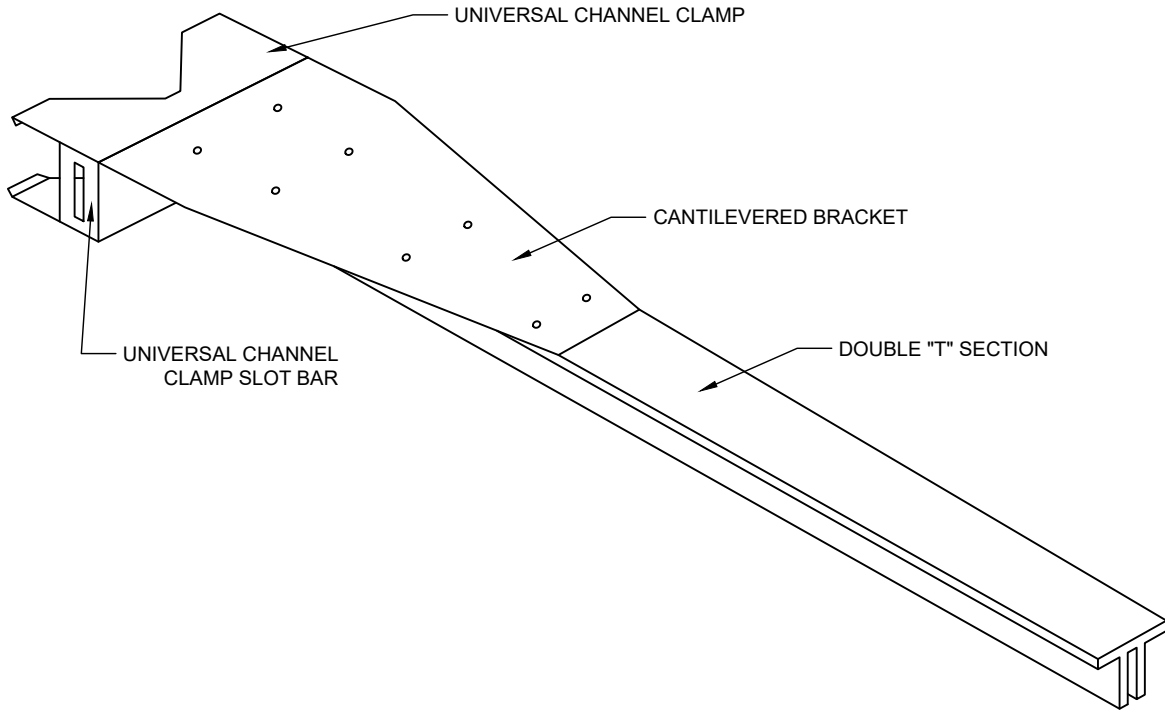
3/30/2018

SHT 5 OF 9



ADDITIONAL CANTILEVERED BRACKET *

* USED WHEN SIGN AREA EXCEEDS SIX (6) SQUARE FEET. PLACE TWO (2) BRACKETS BACK TO BACK ON TOP AND BOTTOM OF SIGN BLADE.



UNIVERSAL CHANNEL CLAMP

CANTILEVERED BRACKET

UNIVERSAL CHANNEL CLAMP SLOT BAR

DOUBLE "T" SECTION

MOUNTING HARDWARE

STREET NAME SIGN

FASTEN TO SUPPORT WITH PRE-ASSEMBLED BUCKLE-STRAP COMBINATION ASSEMBLY.

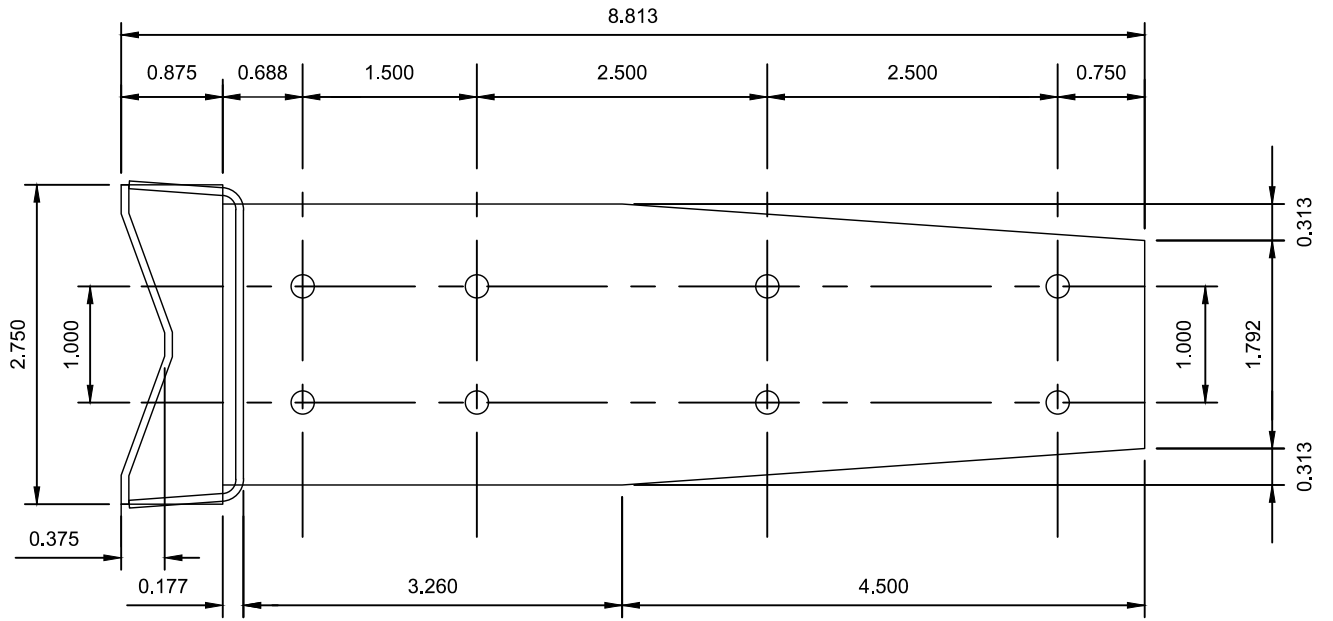
THE CANTILEVER BRACKET SHALL BE BANNED TO THE SUPPORT USING TYPE 201 STAINLESS STEEL WITH A MINIMUM THICKNESS OF 0.036" AND 3/4" WIDTH.

CITY OF COLUMBUS, OHIO
DEPARTMENT OF PUBLIC SERVICE
DIVISION OF DESIGN AND CONSTRUCTION

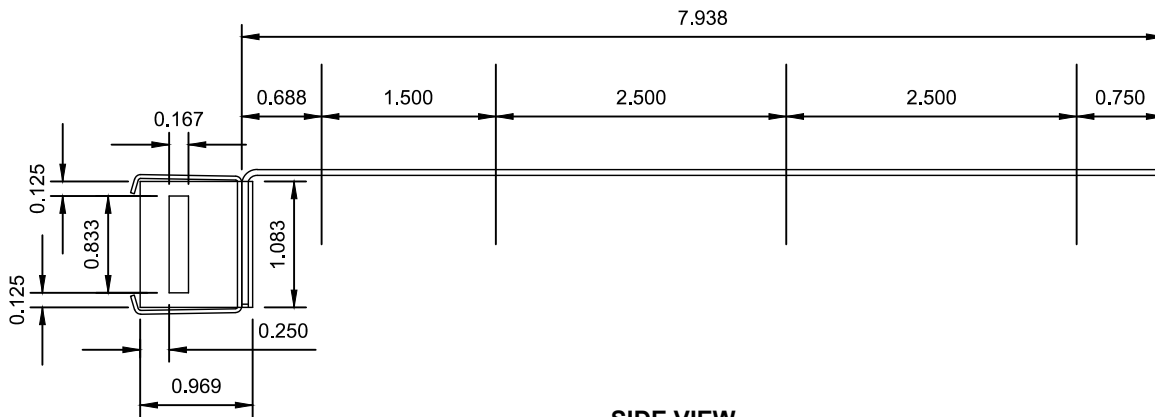
STD DWG
2185

3/30/2018

SHT 6 OF 9



TOP VIEW



SIDE VIEW

MOUNTING HARDWARE
CANTILEVER BRACKET

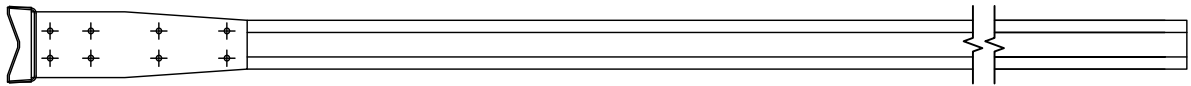
STREET NAME SIGN

CITY OF COLUMBUS, OHIO
DEPARTMENT OF PUBLIC SERVICE
DIVISION OF DESIGN AND CONSTRUCTION

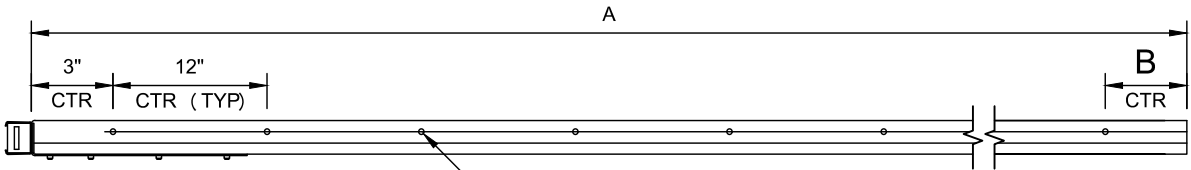
STD DWG
2185

3/30/2018

SHT 7 OF 9



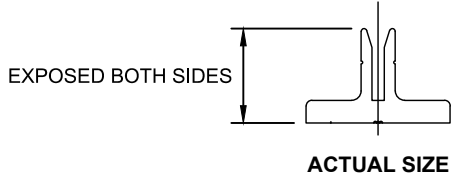
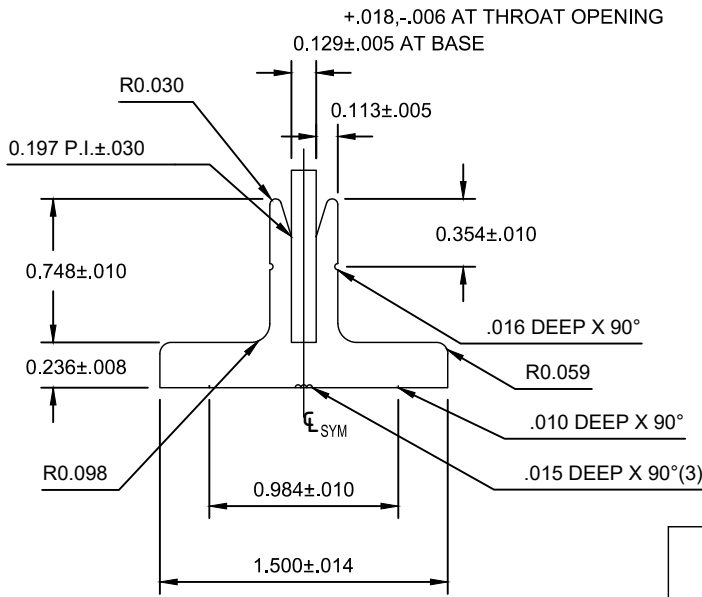
PLAN



N HOLES, 13/64" DIA FOR 3/16" RIVET

ELEVATION

A (inches)	B (inches)	N (number of holes)
42	3	4
48	1	4
54	3	5



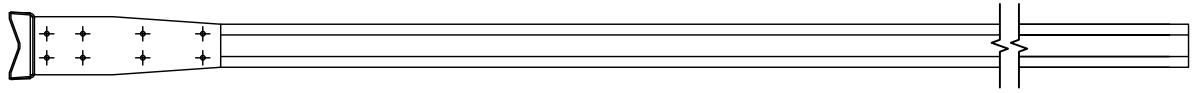
MOUNTING HARDWARE
DOUBLE TEE, TYPE II

STREET NAME SIGN

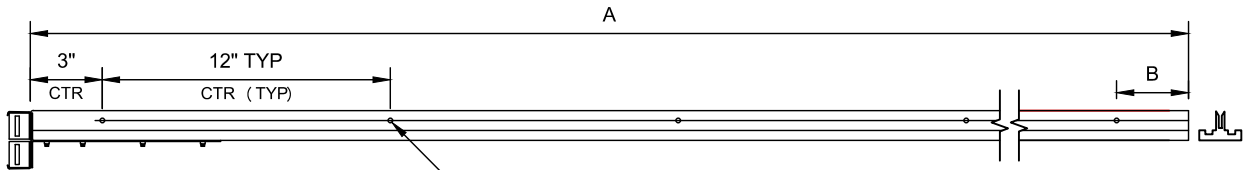
USE TYPE II TEE FOR 9" AND 12" BLADES THAT ARE 42", 48" AND 54" LONG.

USE TYPE I TEE FOR 9" AND 12" BLADES THAT ARE LESS THAN 42" LONG.

CITY OF COLUMBUS, OHIO DEPARTMENT OF PUBLIC SERVICE DIVISION OF DESIGN AND CONSTRUCTION	STD DWG
	2185
	3/30/2018
SHT 8 OF 9	



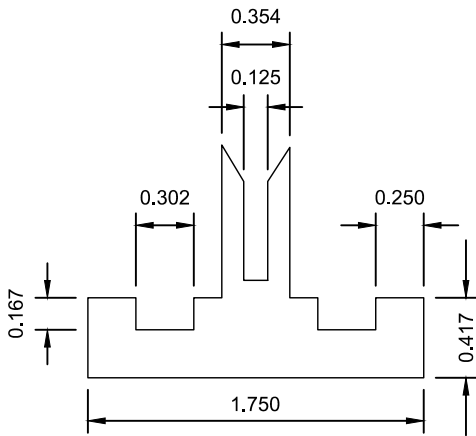
PLAN



N HOLES, 13/64" DIA FOR 3/16" RIVET

ELEVATION

A (inches)	B (inches)	N (number of holes)
42	3	4
48	1	4
54	3	5
60	1	6
72	1	7



SECTION

**MOUNTING HARDWARE
DOUBLE TEE, TYPE III**

STREET NAME SIGN

USE TYPE III TEES FOR 9" AND 12" BLADES THAT ARE 60", 66" & 72" LONG AND ALL 18" BLADES WITH BACK TO BACK CANTILEVER BRACKETS.

CITY OF COLUMBUS, OHIO
DEPARTMENT OF PUBLIC SERVICE
DIVISION OF DESIGN AND CONSTRUCTION

STD DWG

2185

3/30/2018

SHT 9 OF 9