

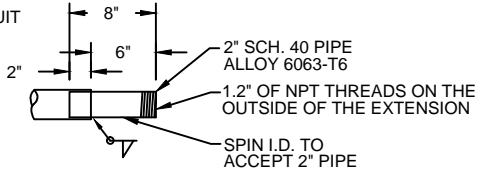
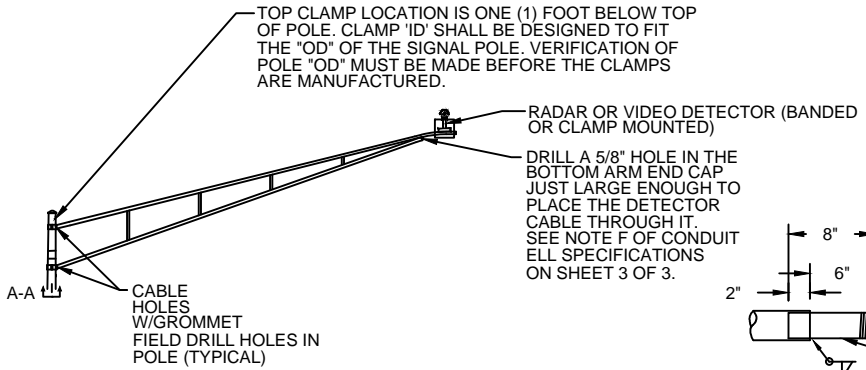
WARNING: TIGHTEN BRACKET CLAMPS SECURELY TO PREVENT BRACKET ROTATION & CABLE SHEARING.

EFFECTIVE PROJECTED AREA
 TRAFFIC FLOW CAMERA - 1 SQ FT
 VIDEO DETECTOR - 0.75 SQ FT
 RADAR DETECTOR - 1 SQ FT

WEIGHT IN POUNDS
 TRAFFIC FLOW CAMERA - 20
 VIDEO DETECTOR - 8
 RADAR DETECTOR - 7

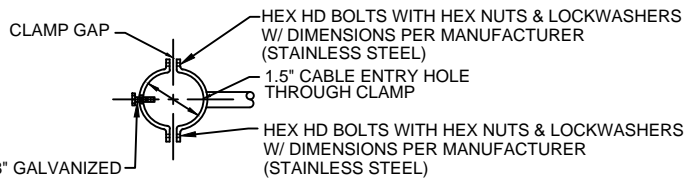
SAFETY FACTOR > 1.6

LOADING FACTORS



HORIZONTAL SLIPFITTER

PROVIDE THREADED END CAP WHEN HORIZONTAL SLIPFITTER IS NOT USED. CAP SHALL BE COATED TO MATCH ARM AND POLE.



(2) 5/8" GALVANIZED ANTI-ROTATION BOLTS, EACH FIELD DRILLED INTO POLE (ONE FOR EACH BRACKET CLAMP) ANTI-ROTATION BOLT SHALL NOT PROTRUDE MORE THAN 1/2" INTO SIGNAL SUPPORT.

VERIFY UPPER & LOWER ID DIMENSIONS. CLAMP SHALL BE SIZED TO ACCOMMODATE POLE OD.

VIEW A-A

30' - 0" BRACKET ARM

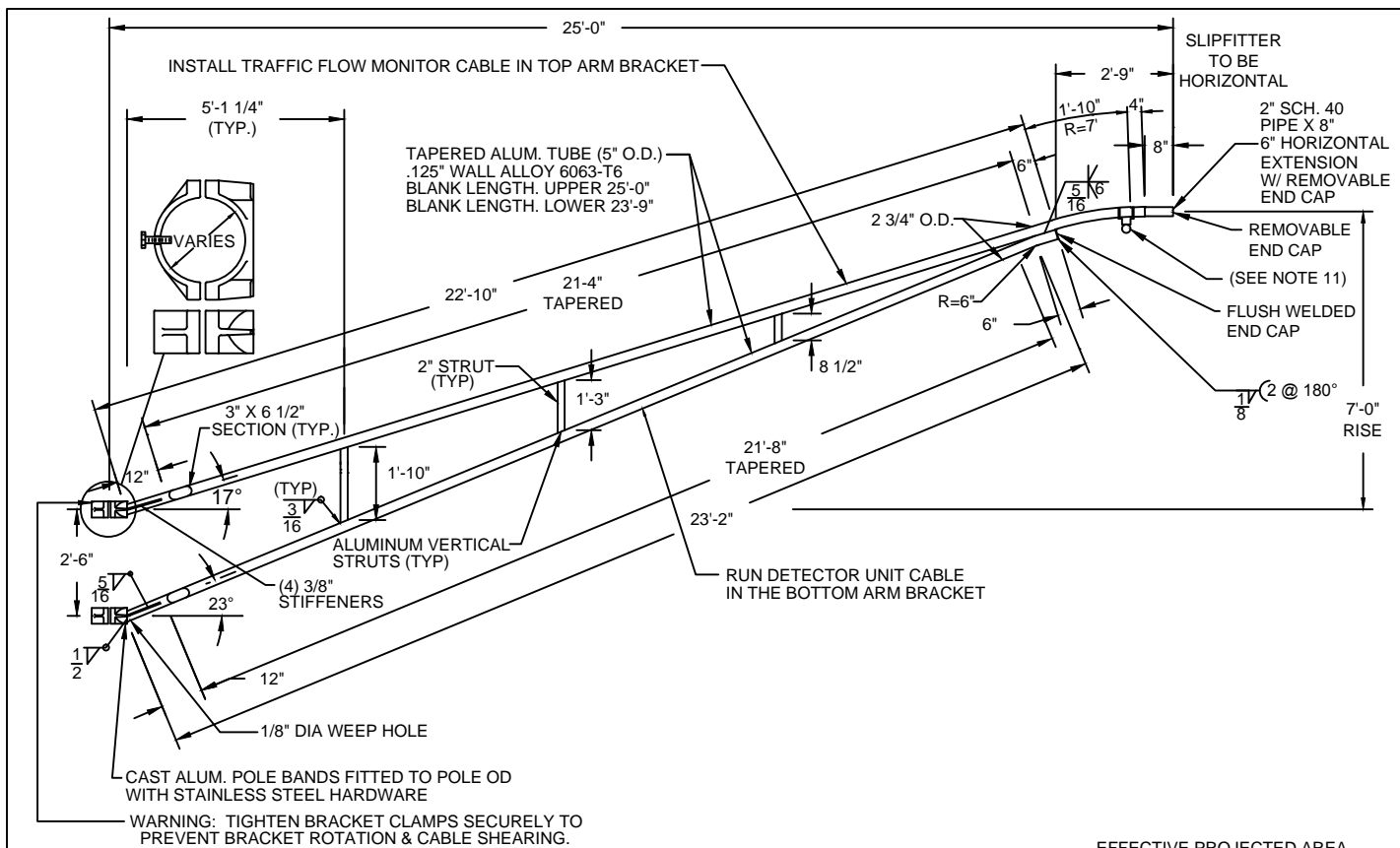
DETECTOR UNIT / TRAFFIC FLOW MONITOR BRACKET ARM

CITY OF COLUMBUS, OHIO
 DEPARTMENT OF PUBLIC SERVICE
 DIVISION OF DESIGN AND CONSTRUCTION

STD DWG
4110

CITY ENGINEER

10/01/2018
 SHT 1 OF 3



EFFECTIVE PROJECTED AREA
 TRAFFIC FLOW CAMERA - 1 SQ FT
 VIDEO DETECTOR - 0.75 SQ FT
 RADAR DETECTOR - 1 SQ FT

WEIGHT IN POUNDS
 TRAFFIC FLOW CAMERA - 20
 VIDEO DETECTOR - 8
 RADAR DETECTOR - 7

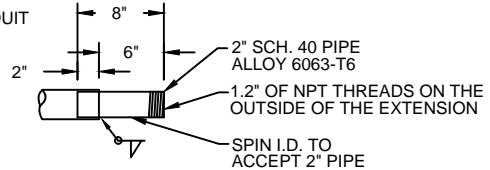
SAFETY FACTOR > 1.6

LOADING FACTORS

TOP CLAMP LOCATION IS ONE (1) FOOT BELOW TOP OF POLE. CLAMP ID SHALL BE DESIGNED TO FIT THE "OD" OF THE SIGNAL POLE. VERIFICATION OF POLE "OD" MUST BE MADE BEFORE THE CLAMPS ARE MANUFACTURED.

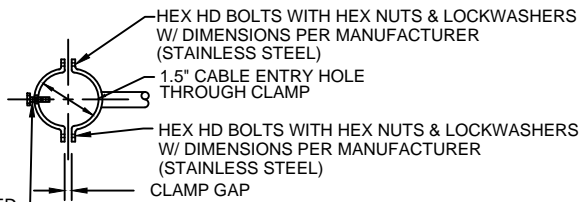
RADAR OR VIDEO DETECTOR (BANDED OR CLAMP MOUNTED)

DRILL A 5/8" HOLE IN THE BOTTOM ARM END CAP JUST LARGE ENOUGH TO PLACE THE DETECTOR CABLE THROUGH IT. SEE NOTE F OF CONDUIT ELL SPECIFICATIONS ON SHEET 3 OF 3.



HORIZONTAL SLIPFITTER

PROVIDE THREADED END CAP WHEN HORIZONTAL SLIPFITTER IS NOT USED. CAP SHALL BE COATED TO MATCH ARM AND POLE.



(2)-5/8" GALVANIZED ANTI-ROTATION BOLTS, EACH FIELD DRILLED INTO POLE (ONE FOR EACH BRACKET CLAMP) ANTI-ROTATION BOLT SHALL NOT PROTRUDE MORE THAN 1/2" INTO SIGNAL SUPPORT.

VERIFY UPPER & LOWER ID DIMENSIONS. CLAMP SHALL BE SIZED TO ACCOMMODATE POLE OD.

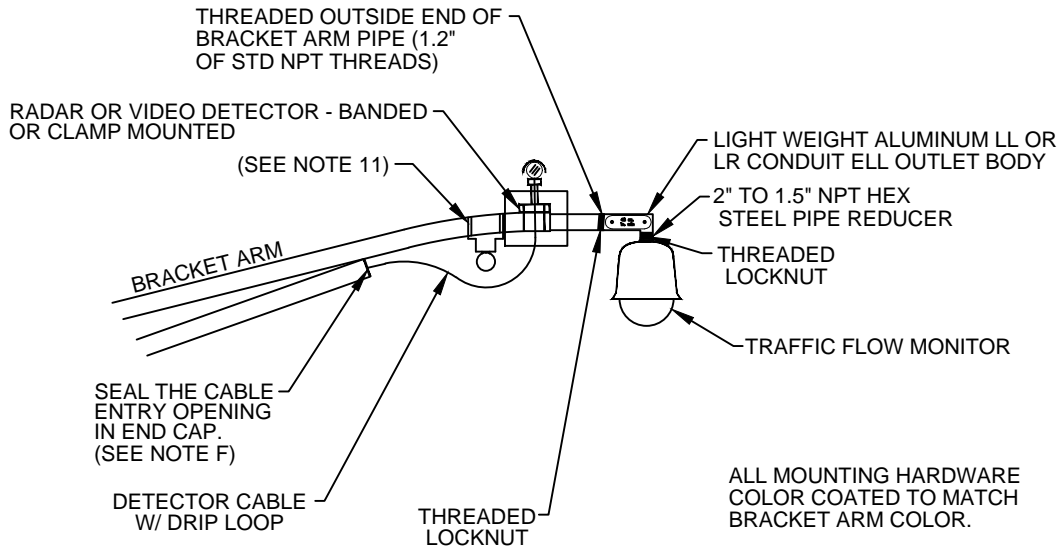
VIEW A-A

25' - 0" BRACKET ARM

DETECTOR UNIT / TRAFFIC FLOW MONITOR BRACKET ARM

CITY OF COLUMBUS, OHIO DEPARTMENT OF PUBLIC SERVICE DIVISION OF DESIGN AND CONSTRUCTION	STD DWG 4110
	10/01/2018
CITY ENGINEER	SHT 2 OF 3

INSTALL THE TRAFFIC FLOW MONITOR CABLE IN THE TOP ARM BRACKET.
 INSTALL THE DETECTOR CABLE IN THE BOTTOM ARM BRACKET.



- A) THREADED BODY (NPT) WITH NON-CORROSIVE HARDWARE
- B) 48 CU. IN. INTERIOR AREA
- C) FLAT COVER WITH SOLID NEOPRENE GASKET
- D) COVER OPENING - 6" X 2.4"
- E) LIGHT WEIGHT ALUMINUM BODY
- F) PROVIDE #10 RUBBER STOPPER WITH A HOLE AND SLOT FOR OUTGOING CABLE; ENLARGE STOPPER HOLE AS NEEDED JUST ENOUGH TO FIT CABLE DIAMETER

LL/LR CONDUIT ELL SPECS

NOTES:

1. BRACKET ARMS SHALL BE INSTALLED PARALLEL OR PERPENDICULAR TO THE ROAD CENTERLINE AS PER PLAN.
2. ALL CABLES SHALL BE RUN INSIDE A BRACKET TUBE. ENTRY HOLES INTO THE SIGNAL POLE SHALL BE FIELD DRILLED.
3. BRACKET ARM, VIDEO DETECTOR AND/OR TRAFFIC FLOW MONITOR DOME SHALL BE COLOR COATED AS PER PLAN.
4. HEAT TREAT AFTER WELDING.
5. BRACKET ARMS SHALL BE COATED IN ACCORDANCE WITH THE PLANS TO MATCH THE SIGNAL SUPPORT OR STRAIN POLE STRUCTURE.
6. A TRUSS-STYLE DESIGN SHALL BE USED AND SHALL BE CAPABLE OF SUPPORTING A LUMINAIRE WEIGHING 75 POUNDS AND HAVING AN EFFECTIVE PROJECTED AREA OF 1.6 SQUARE FEET AND OR TRAFFIC DETECTOR AND/OR TRAFFIC FLOW MONITOR.
7. BRACKET ARMS SHALL BE DESIGNED FOR A 90 MPH WIND LOADING WITH APPROPRIATE GUST FACTOR.
8. THE CLAMP MOUNTED ARM SHALL COME WITH BOTH CLAMPS AND MOUNTING HARDWARE.
9. BRACKET ARMS SHALL BE DESIGNED TO FIT A MASTARM POLE SHAFT THAT HAS A NOMINAL TAPER OF 0.14 INCH PER FOOT AND A BOTTOM-OF-POLE OUTSIDE DIAMETER AS PER PLAN.
10. DETAILS AND DIMENSIONS ILLUSTRATED ON THESE DRAWINGS ILLUSTRATE AN ALUMINUM TRUSS ONLY. ALL STRUCTURAL COMPONENTS REMAIN THE RESPONSIBILITY OF THE MANUFACTURER.
11. FOR MECHANICAL DAMPENING DEVICE SEE STANDARD DRAWING 4122.

NOTES AND CONDUIT ELL SPECS

**DETECTOR UNIT /
 TRAFFIC FLOW MONITOR
 BRACKET ARM**

CITY OF COLUMBUS, OHIO DEPARTMENT OF PUBLIC SERVICE DIVISION OF DESIGN AND CONSTRUCTION	STD DWG 4110
	10/01/2018
CITY ENGINEER	SHT 3 OF 3