

# SYPHILIS OUTBREAK

## QUARTERLY REPORT

QUARTER 1, 2019  
FRANKLIN COUNTY, OHIO

### SYPHILIS IS ON THE RISE

There is a syphilis outbreak in Columbus. This quarterly report provides a snapshot of the most up-to-date data on early syphilis cases in Franklin County, Ohio.

**Increasing Local Rates:** There was a steady increase in the number of infections between 2012 and 2017 in Franklin County. Overall, local rates are 2.5 times higher than Ohio rates.

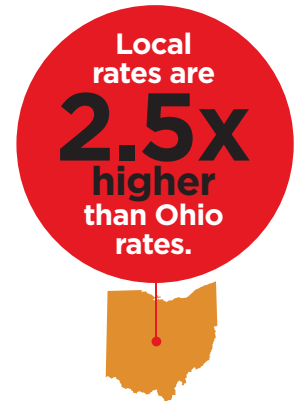
**Disparities:** Syphilis rates in Franklin County are disproportionately high in males (vs. females) and blacks (vs. whites).

**Testing & Treatment:** Syphilis is a sexually transmitted infection (STI) that can have very serious complications when left untreated. Syphilis can be transmitted even if there are no visible signs of infection. The only way to know for sure if you have syphilis is to get tested. Syphilis is easy to diagnose and cure if you get tested and find it early.

**For more information** on syphilis, including local testing site details, visit [www.columbus.gov/Syphilis](http://www.columbus.gov/Syphilis).



Over the past 6 years (2013-2018), there has been a **50% increase** in syphilis rates locally.



### EARLY SYPHILIS CASES (Primary, Secondary and Early Latent Cases Only)

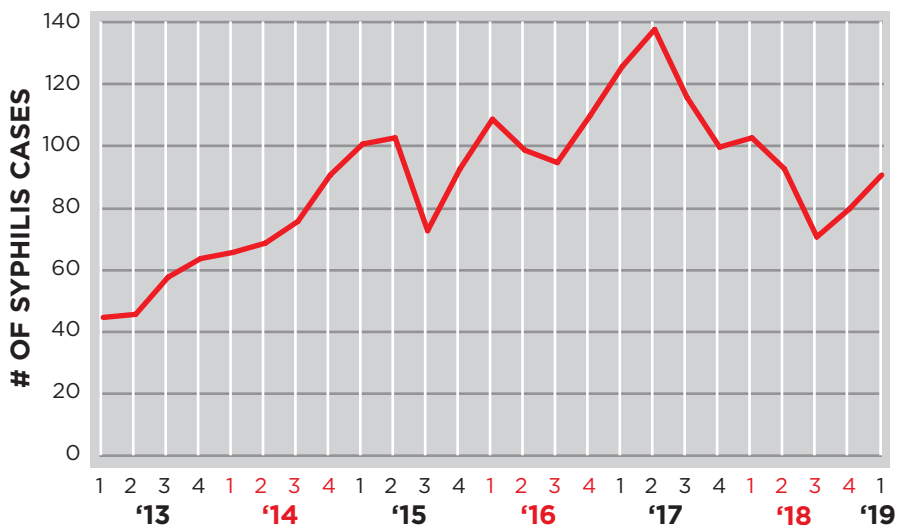
**92** Quarter 1  
Jan-Mar. 2019



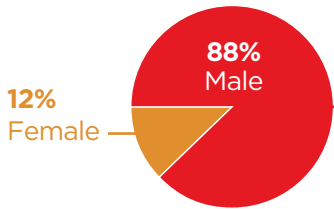
**92** Year To Date  
Jan-Mar. 2019



SYPHILIS CASES BY QUARTER, 2013 - PRESENT



## SEX (N=92)



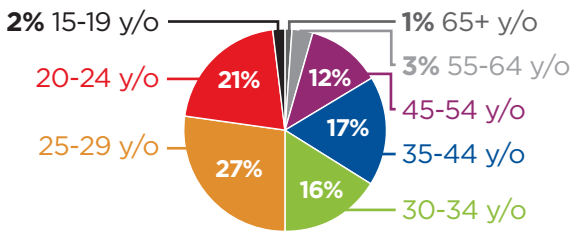
### Of Male Cases of Early Syphilis (N=81)...



\*in the last 12 months  
†12% did not answer/refused/left blank

## AGE (N=92)

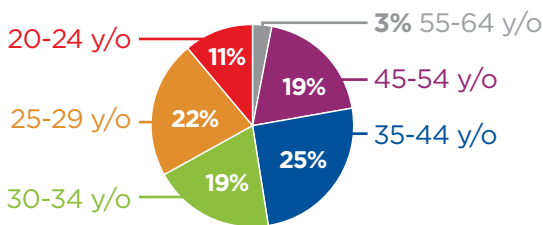
### Cases By Age Group (N=92)



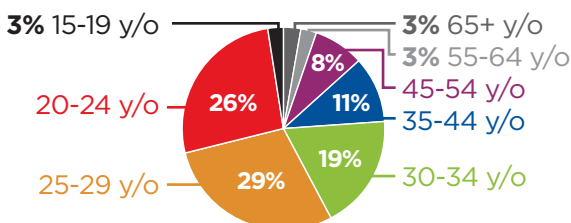
### Age Differences Between Races For Males

Black males with syphilis tend to be younger than white males with syphilis.

### White Male Cases By Age Group (N=36)

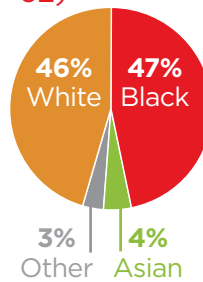


### Black Male Cases By Age Group (N=38)



Age groups with zero cases are not depicted in charts  
y/o = Years Old

## RACE (N=92)



## DISPARITIES

### Racial Disparity (for 2018)

For every 1 white person with syphilis, 2.5 black people have it.



### Sex Disparity (for 2018)

For every 1 female with syphilis, 7.3 males have it.



## CONGENITAL



**1 case** of congenital syphilis (Jan. - Mar. 2019)

**ABOUT THE DATA:** All current and historical figures are preliminary and subject to change as new/updated information is received. Current and preliminary syphilis data (2015 and after) are downloaded from the Ohio Disease Reporting System. Analysis is completed by the Office of Epidemiology at Columbus Public Health. Current population data are provided by the American Community Survey.

### DEFINITIONS:

**Early Syphilis** - A probable and confirmed diagnosis of primary, secondary or early latent syphilis.  
**Congenital Syphilis** - A disease that occurs when a mother with syphilis passes the infection on to her baby during pregnancy.  
**Race** - Self-identified regardless of ethnicity. Other race includes multiracial.

**QUESTIONS/COMMENTS?** Kathy Cowen, MS, Director, Office of Epidemiology, Columbus Public Health, (614) 645-6252 or kathycc@columbus.gov.

**PUBLISHED JUNE 2019**