

Highlights

- In week 41 of 2019, the individual local flu activity indicator trend values were mixed compared to the previous week. As a whole, flu intensity (composite indicator) is low.
- Geographic spread and local intensity designation (Click [here](#) for definitions) = SPORADIC, LOW
- Local medical facility labs reported 725 tests run with 8 (1.1%) positive results for week 41 of 2019.
- The percentage of ED visits for both influenza-like-illness (ILI) and respiratory symptoms decreased compared to last week.
- In week 41 of 2019, the trends for the local over-the-counter medication category sales tracked were mixed (decrease in electrolyte, thermometer, and adult anti-fever sales; increase in chest rub, pediatric anti-fever, and throat lozenge sales; stable cough and cold sales) compared to last week.
- In week 41, the U.S. seasonal influenza activity remains low. Please [visit the CDC website for specific information](#).

Local Flu Activity Dashboard (All data are preliminary and may change as updated reports are received.)



Reportable Conditions (Cumulative Numbers as of Oct 13, 2019)	2014	2015	2016	2017	2018	2019 YTD
Pediatric Influenza Associated Death Reported by Year (based on date of death)	0	0	0	0	0	1
Influenza Associated Hospitalizations (IAH) Reported by Admission Year ⁶	875	447	293	846	1,036	711
IAH comparison by Flu Season (October through May or Weeks 35 - 20)	2014-15	2015-16	2016-17	2017-18	2018-19	2019-20*
*Current season figures (2019-20) are from week 35 through week 41 of 2019.	871	265	619	1,235	746	7

¹Interpret with caution. Indicators with small numbers subject to large weekly percentage fluctuations.
²Number of weeks "▲" = Increase (>2%), "▼" = Decrease (>2%), "•" = Stable (-2% to +2%).
³Black line is current years data. Based on data availability, red line is historical average (excluding pandemic year).
⁴Data Source: Medical claims data from athenaHealth® (www.athenahealth.com). Rate of Flu or ILI visits to Ohio (statewide) athenaHealth® network primary care practices/physicians. Claims data are subject to filing and processing time lags. Historical data are updated when they are received.
⁵Franklin County, OH residents only (based on zipcode). NOTE: Excludes one hospital system included in the past due to technical changes affecting visit classification assignment and numbers.
⁶Confirmed cases only. Based on jurisdiction equal to Franklin County or City of Columbus and admission date available in ODRS.

Influenza Morbidity and Influenza-Like Illness (ILI) Reports

In week 41, the preliminary Ohio¹ (statewide) influenza and influenza-like-illness (ILI) visit rate to athenaHealth® providers (3.58 per 1,000 visits) increased compared to the previous week and is slightly above its baseline average for the week (Figure 1). The week 41 percentage of all Emergency Department (ED) visits categorized as ILI decreased compared to the previous week (Figure 3) and is above its historic baseline for the week.

Nationally, during week 41 of 2019, 1.5% of patient visits reported through ILINet were due to influenza-like illness (ILI). The percentage is below the national baseline of 2.4% for week 41.

Laboratory Surveillance

During week 41 of 2019, reporting Franklin County sentinel medical facility laboratories tested 725 specimens, with 8 (1.1%) positive (Figure 4). The total number of tests done by local reporting labs from week 35 of 2019 through week 41 of 2019 is 3,739 with 35 (0.94%) positives (15 type A, 20 type B, 0 type A and B, 0 type unknown).

Nationally in week 41 of 2019, clinical laboratories reported 16,672 specimens tested for influenza viruses, 573 (3.4%) of which were positive (150 type A, 423 type B). Public health laboratories reported testing 407 specimens, 64 of which were positive (44 type A – of which 9 were A(H1N1)pdm09, 28 were H3N2, and 7 were not subtyped; 20 type B – of which 2 were Yamagata lineage, 10 were Victoria lineage, and 8 where lineage was not performed). Please visit the CDC website for more information, including cumulative data.

In week 41 of 2019, Ohio clinical labs reported 2,021 specimens tested for influenza this season thus far. Positive results include: (0) A(H1N1)pdm09; (0) A/H3N2; (0) Flu A Not Subtyped, and (0) Flu B (through 10/12/2019). In week 41 of 2019, ODH Public Health Lab reported 7 positive influenza tests from various submitters this season so far. Positive results include: (0) A(H1N1)pdm09; (6) A/H3N2; (1) Influenza B (through 10/12/2019). Please visit the ODH website for more information.

ED Respiratory Visits

In the 41st week of 2019, the percentage of all ED visits categorized as respiratory decreased compared to the percentage seen the previous week and is close to its baseline for the week (Figure 5).

Over-the-Counter (OTC) Medication Sales

In week 41 of 2019, the trends for the local over-the-counter medication category sales tracked were mixed (decrease in electrolyte, thermometer, and adult anti-fever sales; increase in chest rub, pediatric anti-fever, and throat lozenge sales; stable cough and cold sales) compared to last week.

Additional Influenza Activity Web Links:

Ohio Seasonal Flu Surveillance: <https://odh.ohio.gov>

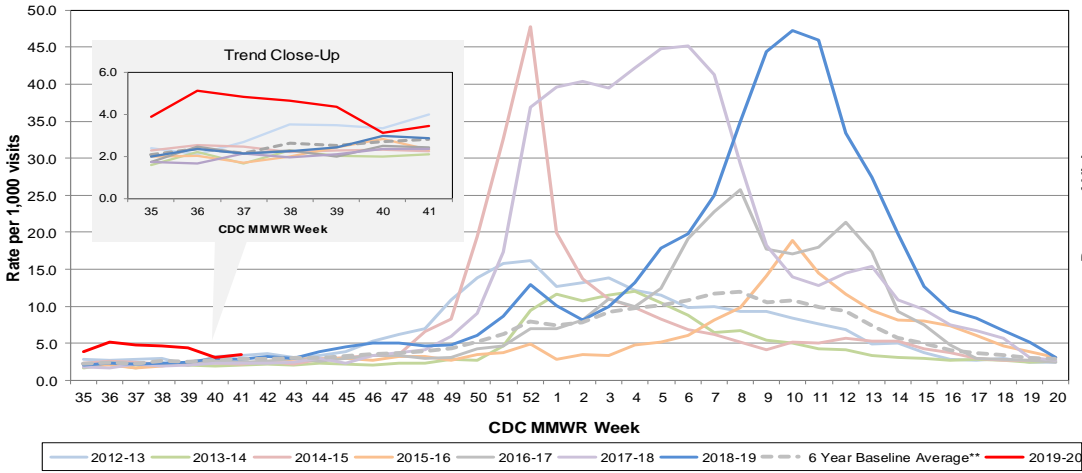
CDC National Seasonal Flu Surveillance Reports: <http://www.cdc.gov/flu/weekly/>

World Health Organization Situation Updates: http://www.who.int/influenza/surveillance_monitoring/en/

¹Note: County level athenaHealth® network primary care medical claims data is no longer available.

Columbus & Franklin County Influenza Monitoring Summary – Week 41, 2020 (10/6/2019-10/12/2019)

Figure 1: Ohio Outpatient Primary Care Provider Influenza or Influenza-Like-Illness Visit Rate*

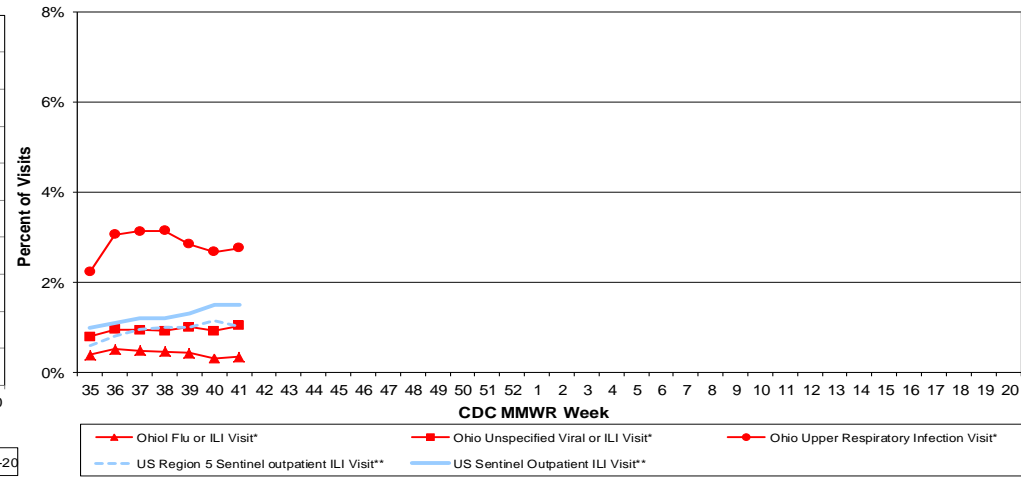


*Source: Ohio (Statewide) medical claims data from athenaHealth®

**Seasons: 2010-11, 2011-12, 2012-13, 2013-14, 2015-16, 2016-17

Note: athenaHealth® claims data are subject to filing and processing time lags. Historical data are updated when they are received.

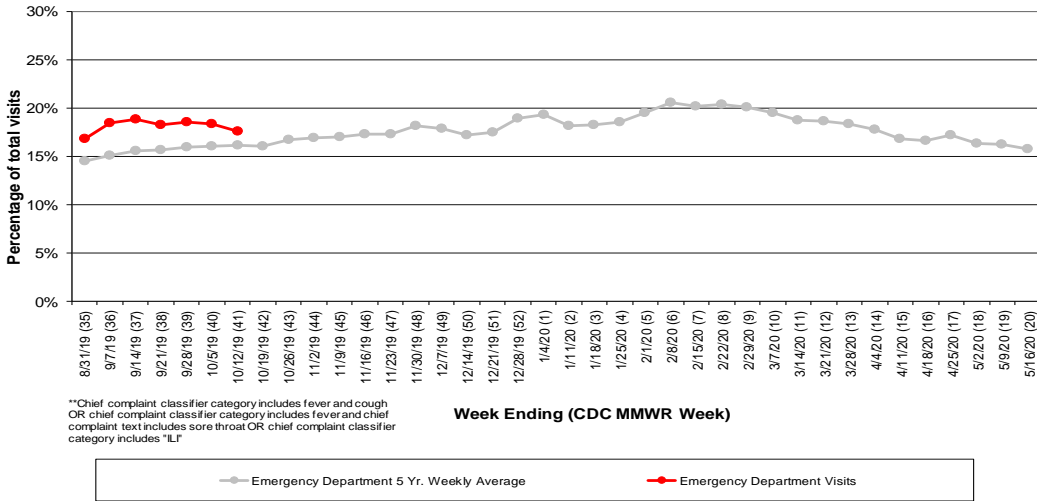
Figure 2: Percentage of Ohio Outpatient Participating Provider* and CDC National Outpatient Sentinel Health Care Provider visits for ILI and Associated Illnesses, 2019-20**



*Source: Ohio (statewide) medical claims data provided by athenaHealth®. Data are subject to filing and processing time lags. Historical data are updated when received.

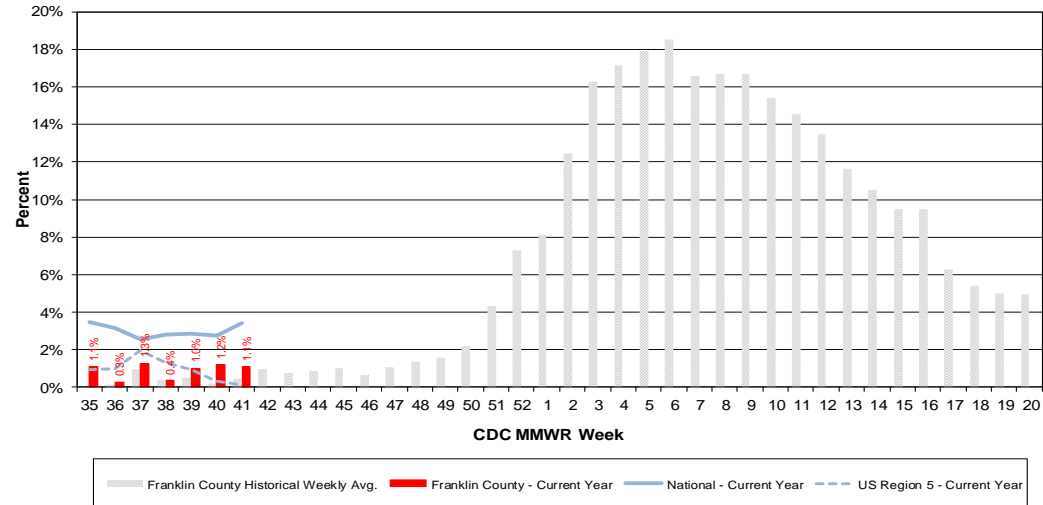
**Source: U.S. Outpatient Influenza-like Illness Surveillance Network (ILINet) sentinel provider visits.

Figure 3: Franklin County Resident ILI Defined ED Visits, 2019-20, Franklin County, OH**



**Chief complaint classifier category includes fever and cough OR chief complaint classifier category includes fever and chief complaint text includes sore throat OR chief complaint classifier category includes "IL"

Figure 4: Percentage of Local Reporting and National Laboratory Positive Influenza Tests by Week, 2019-20



Columbus & Franklin County Influenza Monitoring Summary – Week 41, 2020 (10/6/2019-10/12/2019)

Figure 5: Franklin County Resident Respiratory ED Visits, 2019-20, Franklin County, OH

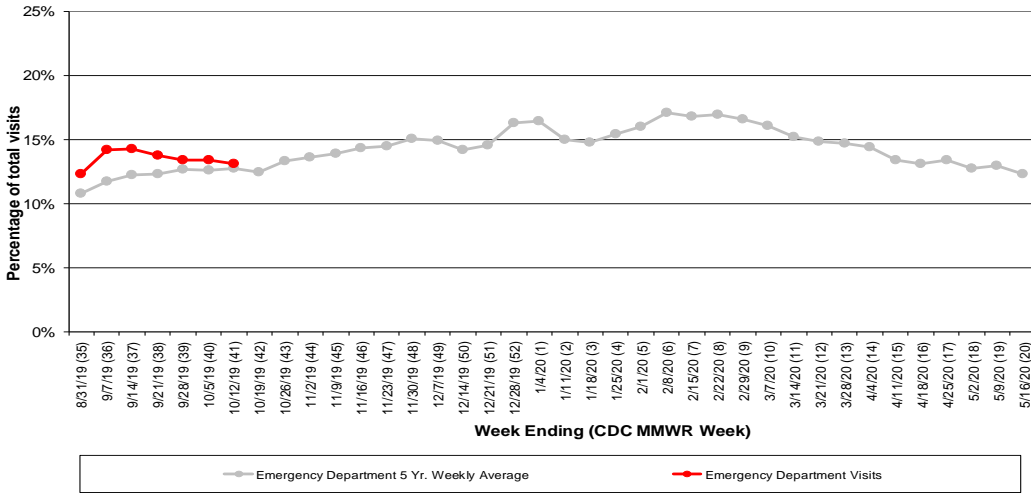


Figure 6: Selected Number of Over-the-Counter Medication Total Sales, 2019-20, Franklin County, OH

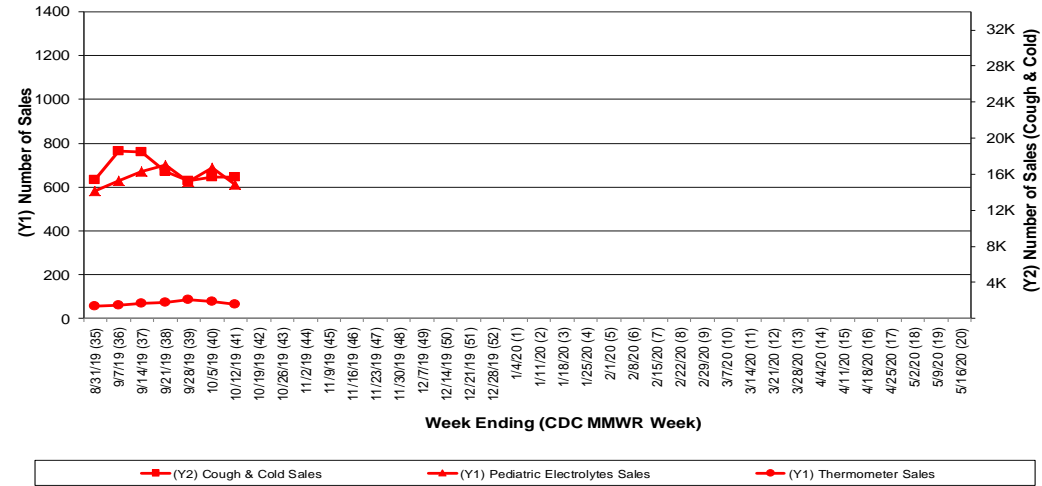
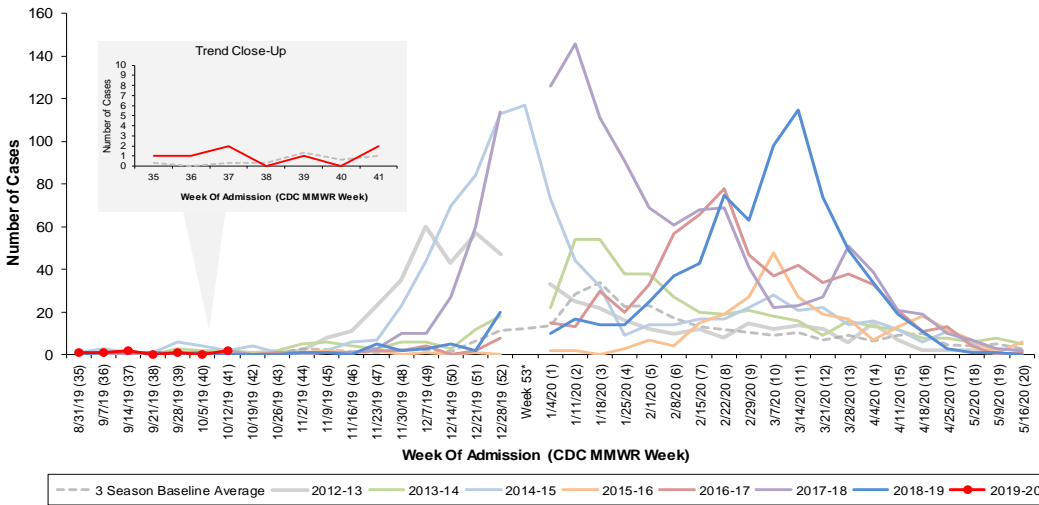


Figure 7: Columbus and Franklin County Jurisdiction Confirmed Influenza Associated Hospitalizations by Hospital Admission Week (As of 10/13/2019)



*Note: Certain years have a 53rd week (e.g., season 2014-15) based on CDCs MMWR Weeks.

Columbus and Franklin County, OH Jurisdiction Confirmed Influenza Hospitalization Cumulative Rates (per 100,000) by Age-Group and Admission Week, 2019-2020 Season

