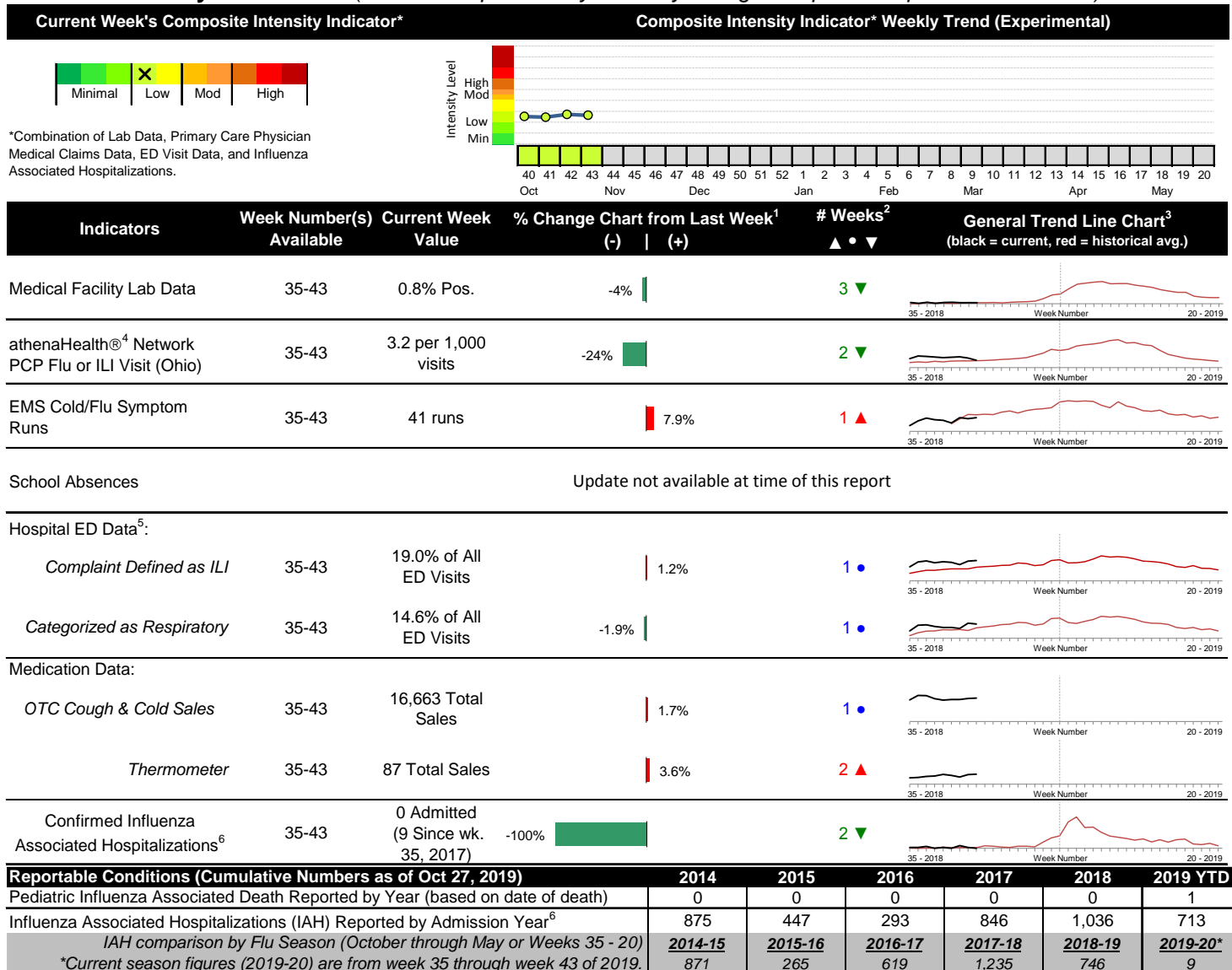


2019-2020 Columbus & Franklin County Seasonal Influenza Activity Weekly Summary (Week 43, Oct 20th, 2019– Oct 26th, 2019)

Highlights

- In week 43 of 2019, the individual local flu activity indicator trend values were mixed compared to the previous week. As a whole, flu intensity (composite indicator) is low.
- Geographic spread and local intensity designation (Click [here](#) for definitions) = SPORADIC, LOW
- Local medical facility labs reported 1,012 tests run with 8 (0.79%) positive results for week 43 of 2019.
- The percentage of ED visits for both influenza-like-illness (ILI) and respiratory symptoms were stable compared to last week.
- In week 43 of 2019, the trends for the local over-the-counter medication category sales tracked were mixed (decrease in electrolyte, chest rub, and pediatric anti-fever sales; increase in thermometer sales; stable cough and cold, adult anti-fever and throat lozenge sales) compared to last week.
- In week 43, the U.S. seasonal influenza activity increased slightly, but remains low. Please [visit the CDC website for specific information](#).

Local Flu Activity Dashboard *(All data are preliminary and may change as updated reports are received.)*



¹Interpret with caution. Indicators with small numbers subject to large weekly percentage fluctuations.

²Number of weeks "▲" = Increase (>2%), "▼" = Decrease (>2%), "•" = Stable (-2% to +2%).

³Black line is current years data. Based on data availability, red line is historical average (excluding pandemic year).

⁴Data Source: Medical claims data from athenaHealth® (www.athenahealth.com). Rate of Flu or ILI visits to Ohio (statewide) athenaHealth® network primary care practices/physicians. Claims data are subject to filing and processing time lags. Historical data are updated when they are received.

⁵Franklin County, OH residents only (based on zipcode). NOTE: Excludes one hospital system included in the past due to technical changes affecting visit classification assignment and numbers.

⁶Confirmed cases only. Based on jurisdiction equal to Franklin County or City of Columbus and admission date available in ODRS.

Influenza Morbidity and Influenza-Like Illness (ILI) Reports

In week 43, the preliminary Ohio¹ (statewide) influenza and influenza-like-illness (ILI) visit rate to athenaHealth® providers (3.2 per 1,000 visits) decreased compared to the previous week and is similar to its baseline average for the week (Figure 1). The week 43 percentage of all Emergency Department (ED) visits categorized as ILI was stable compared to the previous week (Figure 3) and is above its historic baseline for the week.

Nationally, during week 43 of 2019, 1.9% of patient visits reported through ILINet were due to influenza-like illness (ILI). The percentage is below the national baseline of 2.4% for week 43.

Laboratory Surveillance

During week 43 of 2019, reporting Franklin County sentinel medical facility laboratories tested 1,012 specimens, with 8 (0.79%) positive (Figure 4). The total number of tests done by local reporting labs from week 35 of 2019 through week 43 of 2019 is 5,841 with 50 (0.86%) positives (17 type A, 33 type B, 0 type A and B, 0 type unknown).

Nationally in week 43 of 2019, clinical laboratories reported 17,720 specimens tested for influenza viruses, 428 (2.4%) of which were positive (141 type A, 287 type B). Public health laboratories reported testing 550 specimens, 106 of which were positive (67 type A – of which 21 were A(H1N1)pdm09, 42 were H3N2, and 4 were not subtyped; 39 type B – of which 0 were Yamagata lineage, 20 were Victoria lineage, and 19 where lineage was not performed). Please visit the CDC website for more information, including cumulative data.

In week 43 of 2019, Ohio clinical labs reported 4,653 specimens tested for influenza this season thus far. Positive results include: (0) A(H1N1)pdm09; (0) A/H3N2; (4) Flu A Not Subtyped, and (6) Flu B (through 10/20/2019). In week 43 of 2019, ODH Public Health Lab reported 9 positive influenza tests from various submitters this season so far. Positive results include: (0) A(H1N1)pdm09; (7) A/H3N2; (2) Influenza B (through 10/20/2019). Please visit the ODH website for more information.

ED Respiratory Visits

In the 43rd week of 2019, the percentage of all ED visits categorized as respiratory was stable compared to the percentage seen the previous week and is above its baseline for the week (Figure 5).

Over-the-Counter (OTC) Medication Sales

In week 43 of 2019, the trends for the local over-the-counter medication category sales tracked were mixed (decrease in electrolyte, chest rub, and pediatric anti-fever sales; increase in thermometer sales; stable cough and cold, adult anti-fever and throat lozenge sales) compared to last week.

Additional Influenza Activity Web Links:

Ohio Seasonal Flu Surveillance: <https://odh.ohio.gov>

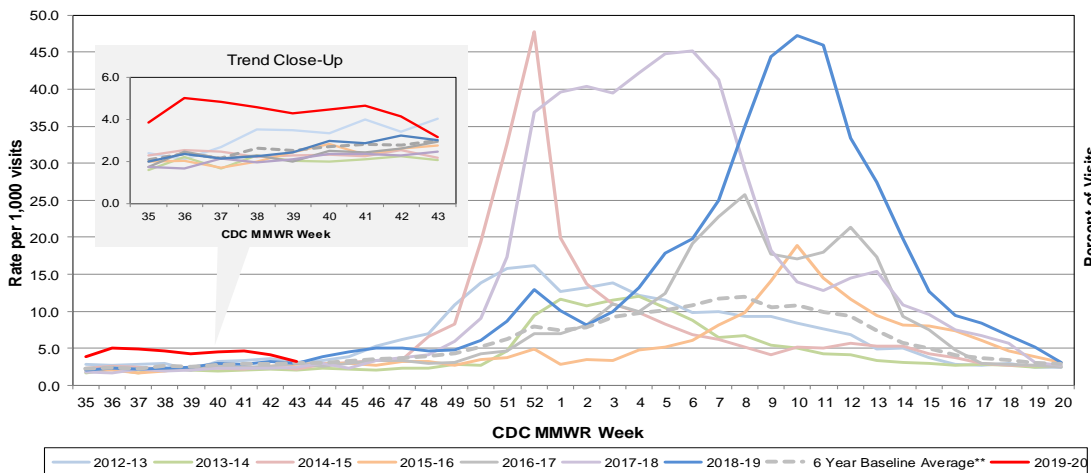
CDC National Seasonal Flu Surveillance Reports: <http://www.cdc.gov/flu/weekly/>

World Health Organization Situation Updates: http://www.who.int/influenza/surveillance_monitoring/en/

¹Note: County level athenaHealth® network primary care medical claims data is no longer available.

Columbus & Franklin County Influenza Monitoring Summary – Week 43, 2020 (10/20/2019-10/26/2019)

Figure 1: Ohio Outpatient Primary Care Provider Influenza or Influenza-Like-Illness Visit Rate*

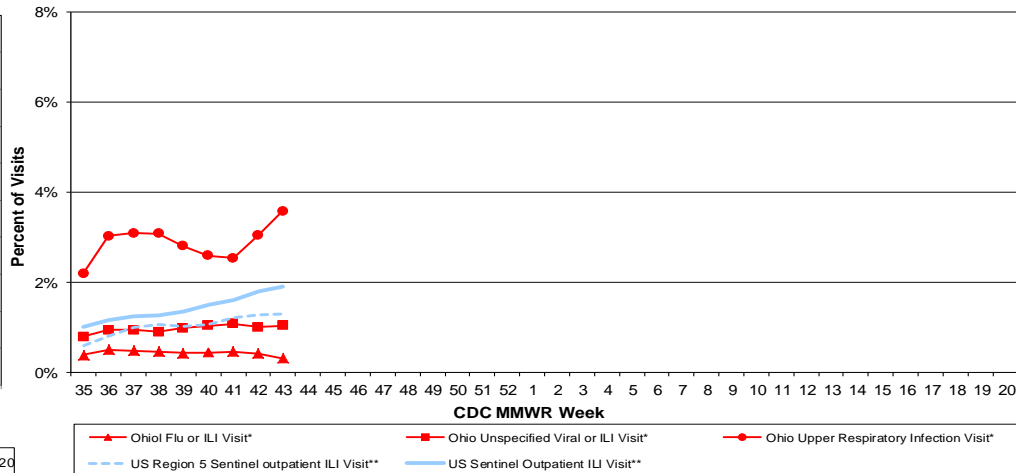


*Source: Ohio (Statewide) medical claims data from athenaHealth®

**Seasons: 2010-11, 2011-12, 2012-13, 2013-14, 2015-16, 2016-17

Note: athenaHealth® claims data are subject to filing and processing time lags. Historical data are updated when they are received.

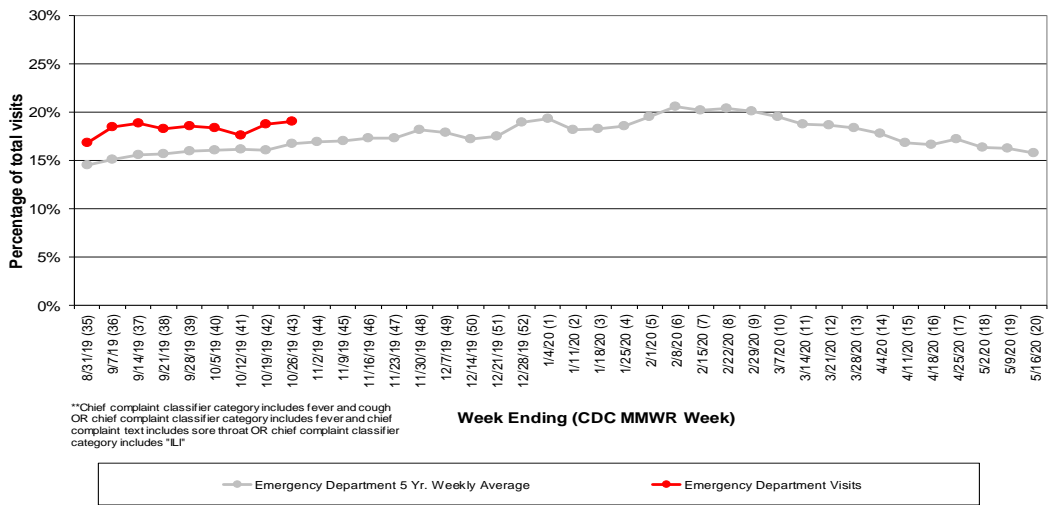
Figure 2: Percentage of Ohio Outpatient Participating Provider* and CDC National Outpatient Sentinel Health Care Provider** visits for ILI and Associated Illnesses, 2019-20



*Source: Ohio (statewide) medical claims data provided by athenaHealth®. Data are subject to filing and processing time lags. Historical data are updated when received.

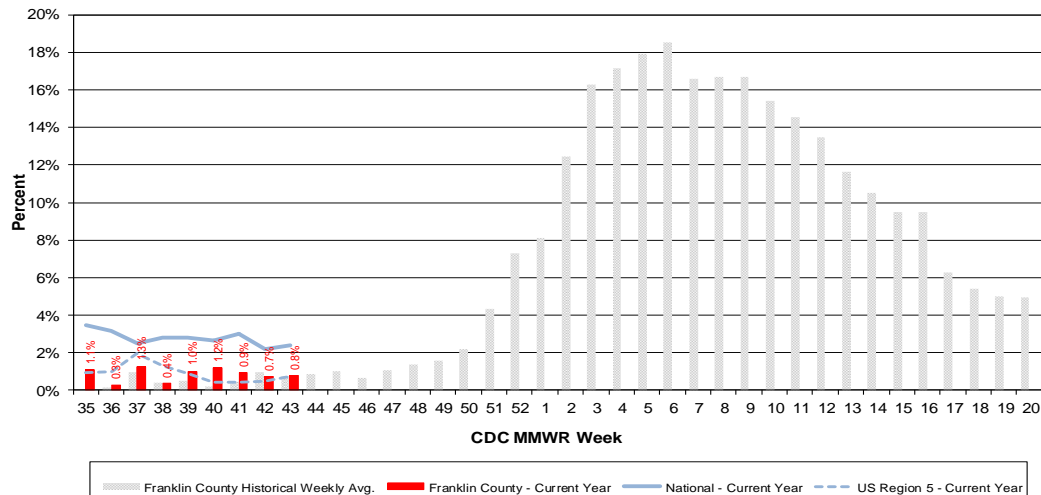
**Source: U.S. Outpatient Influenza-like Illness Surveillance Network (ILINet) sentinel provider visits.

Figure 3: Franklin County Resident ILI Defined** ED Visits, 2019-20, Franklin County, OH



**Chief complaint classifier category includes fever and cough OR chief complaint classifier category includes fever and chief complaint text includes sore throat OR chief complaint classifier category includes "ILI"

Figure 4: Percentage of Local Reporting and National Laboratory Positive Influenza Tests by Week, 2019-20



Columbus & Franklin County Influenza Monitoring Summary – Week 43, 2020 (10/20/2019-10/26/2019)

Figure 5: Franklin County Resident Respiratory ED Visits, 2019-20, Franklin County, OH

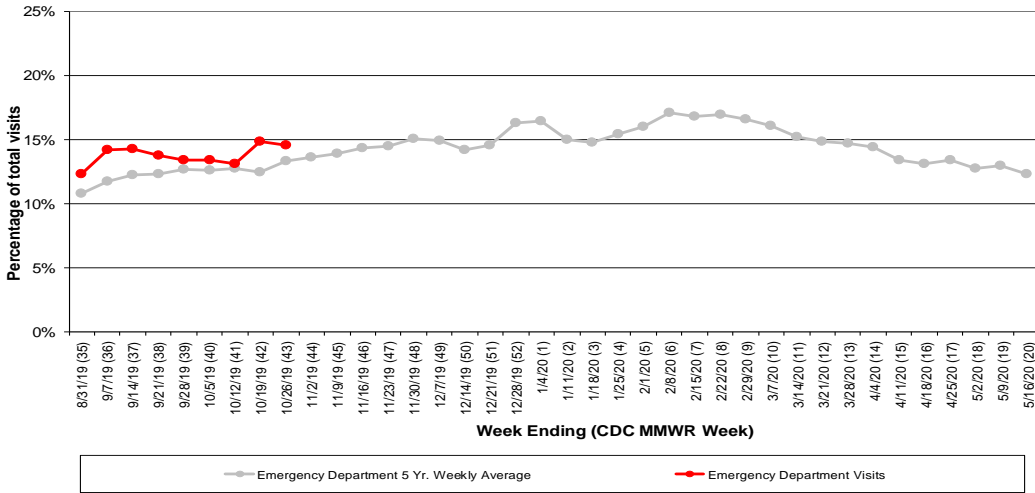


Figure 6: Selected Number of Over-the-Counter Medication Total Sales, 2019-20, Franklin County, OH

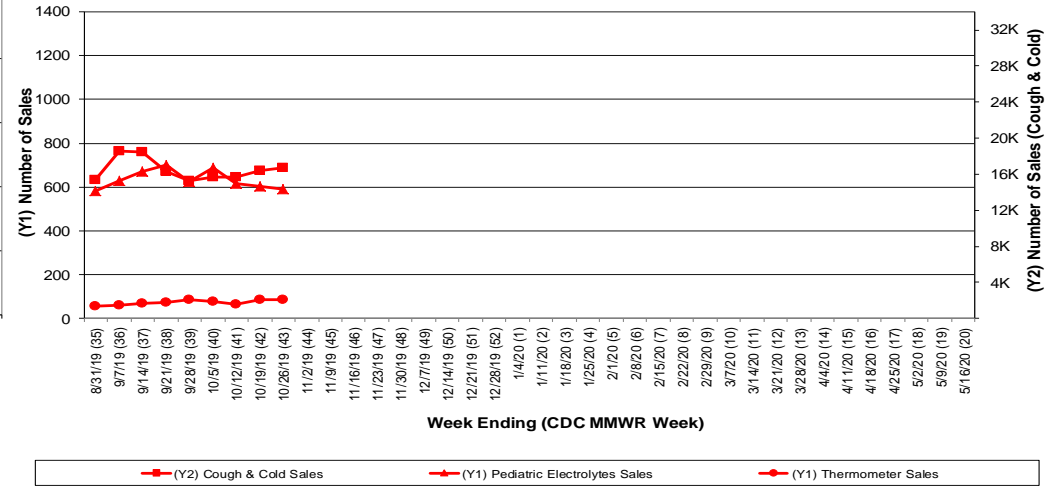
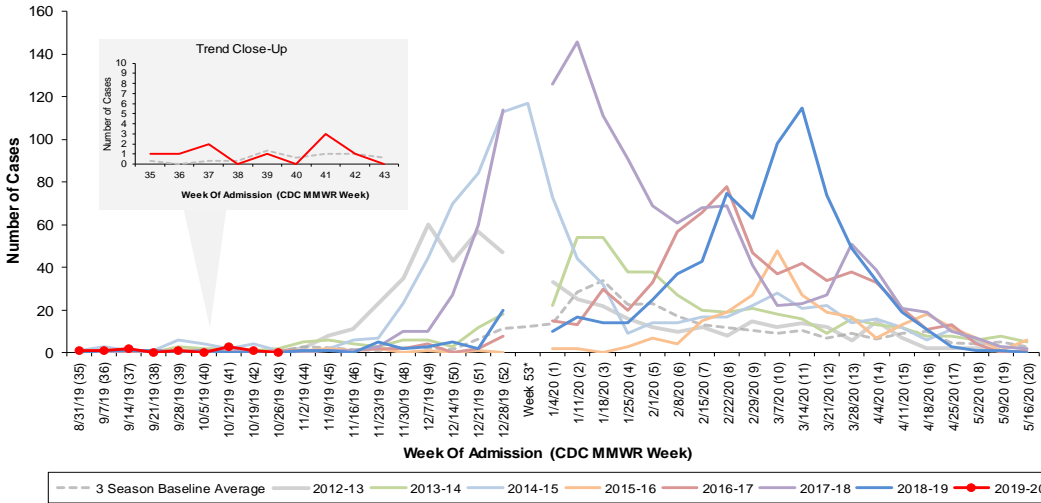


Figure 7: Columbus and Franklin County Jurisdiction Confirmed Influenza Associated Hospitalizations by Hospital Admission Week (As of 10/27/2019)



*Note: Certain years have a 53rd week (e.g., season 2014-15) based on CDCs MMWR Weeks.

Columbus and Franklin County, OH Jurisdiction Confirmed Influenza Hospitalization Cumulative Rates (per 100,000) by Age-Group and Admission Week, 2019-2020 Season

