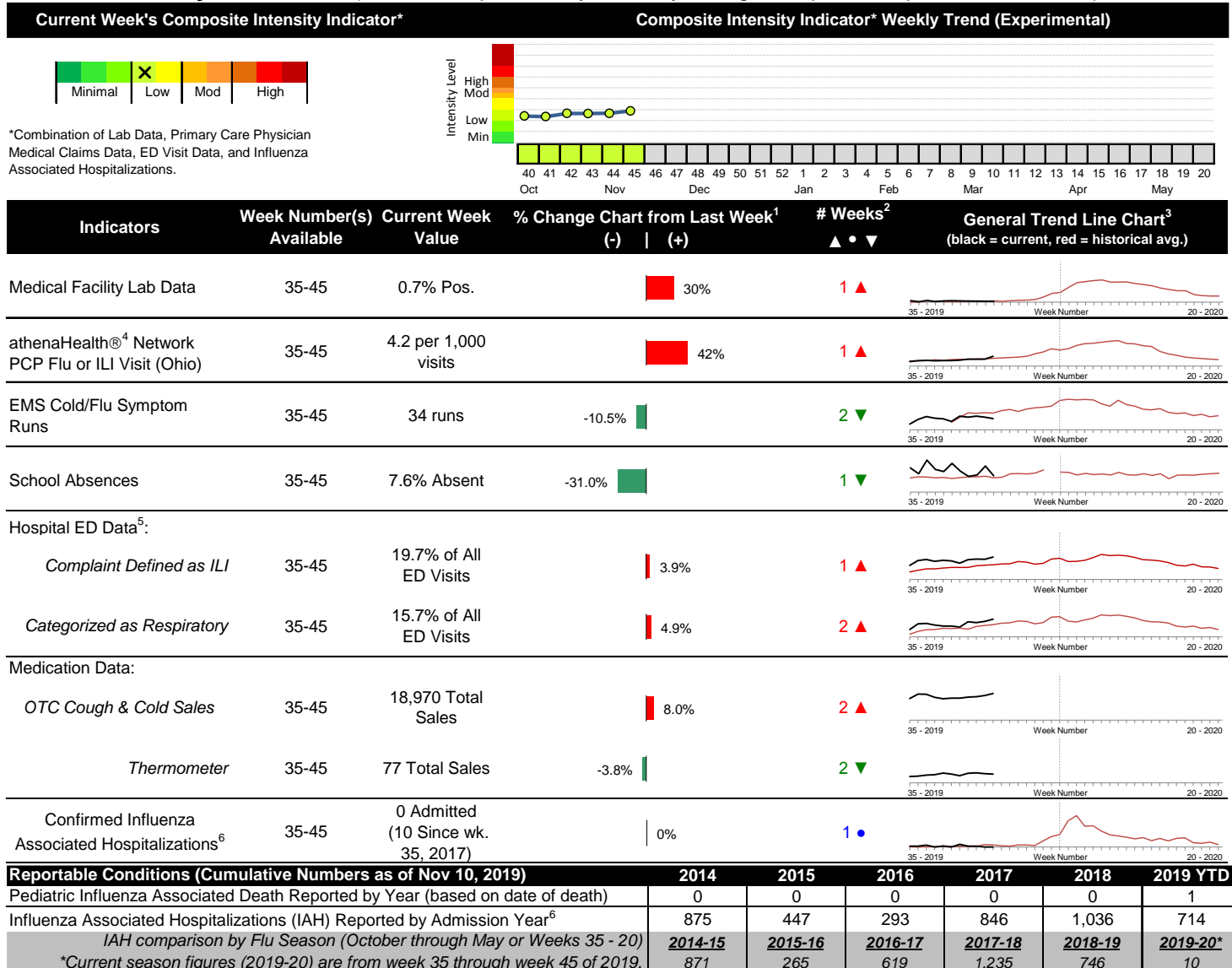


### Highlights

- In week 45 of 2019, the individual local flu activity indicator trend values were mixed compared to the previous week. As a whole, flu intensity (composite indicator) increased but continues to be low.
- Geographic spread and local intensity designation (Click [here](#) for definitions) = SPORADIC, LOW
- Local medical facility labs reported 1,007 tests run with 7 (0.7%) positive results for week 45 of 2019.
- The percentage of ED visits for both influenza-like-illness (ILI) and respiratory symptom visits increased compared to last week.
- In week 45 of 2019, the majority of individual local over-the-counter medication category sale trends tracked increased (decrease in thermometer sales; increase in cough and cold, chest rub, electrolyte, pediatric anti-fever, adult anti-fever, and throat lozenge sales) compared to last week.
- In week 45, the U.S. seasonal influenza activity increased. Please [visit the CDC website for specific information](#).

### Local Flu Activity Dashboard *(All data are preliminary and may change as updated reports are received.)*



<sup>1</sup>Interpret with caution. Indicators with small numbers subject to large weekly percentage fluctuations.

<sup>2</sup>Number of weeks "▲" = Increase (>2%), "▼" = Decrease (>2%), "●" = Stable (-2% to +2%).

<sup>3</sup>Black line is current years data. Based on data availability, red line is historical average (excluding pandemic year).

<sup>4</sup>Data Source: Medical claims data from athenaHealth® (www.athenahealth.com). Rate of Flu or ILI visits to Ohio (statewide) athenaHealth® network primary care practices/physicians. Claims data are subject to filing and processing time lags. Historical data are updated when they are received.

<sup>5</sup>Franklin County, OH residents only (based on zipcode). NOTE: Excludes one hospital system included in the past due to technical changes affecting visit classification assignment and numbers.

<sup>6</sup>Confirmed cases only. Based on jurisdiction equal to Franklin County or City of Columbus and admission date available in ODRS.

## **Influenza Morbidity and Influenza-Like Illness (ILI) Reports**

In week 45, the preliminary Ohio<sup>1</sup> (statewide) influenza and influenza-like-illness (ILI) visit rate to athenaHealth® primary care providers (4.2 per 1,000 visits) increased compared to the previous week and is above its baseline average for the week (Figure 1). The week 45 percentage of all Emergency Department (ED) visits categorized as ILI increased compared to the previous week (Figure 3) and is above its historic baseline for the week.

Nationally, during week 45 of 2019, 2.3% of patient visits reported through ILINet were due to influenza-like illness (ILI). The percentage is below the national baseline of 2.4% for week 45.

## **Laboratory Surveillance**

During week 45 of 2019, reporting Franklin County sentinel medical facility laboratories tested 1,007 specimens, with 7 (0.7%) positive (Figure 4). The total number of tests done by local reporting labs from week 35 of 2019 through week 45 of 2019 is 7,974 with 63 (0.79%) positives (19 type A, 44 type B, 0 type A and B, 0 type unknown).

Updated national clinical lab data was not available at the time of this report. Nationally in week 44 of 2019, clinical laboratories reported 18,126 specimens tested for influenza viruses, 582 (3.2%) of which were positive (143 type A, 439 type B). In week 45, public health laboratories reported testing 844 specimens, 178 of which were positive (73 type A – of which 40 were A(H1N1)pdm09, 25 were H3N2, and 8 were not subtyped; 105 type B – of which 5 were Yamagata lineage, 66 were Victoria lineage, and 34 where lineage was not performed). Please visit the CDC website for more information, including cumulative data.

Updated statewide lab data was not available at the time of this report. In week 44 of 2019, Ohio clinical labs reported 6,141 specimens tested for influenza this season thus far. Positive results include: (1) A(H1N1)pdm09; (0) A/H3N2; (7) Flu A Not Subtyped, and (9) Flu B (through 11/2/2019). In week 45 of 2019, ODH Public Health Lab reported 10 positive influenza tests from various submitters this season so far. Positive results include: (0) A(H1N1)pdm09; (7) A/H3N2; (2) Influenza B (through 11/2/2019). Please visit the ODH website for more information.

## **ED Respiratory Visits**

In the 45<sup>th</sup> week of 2019, the percentage of all ED visits categorized as respiratory increased compared to the percentage seen the previous week and is above its baseline for the week (Figure 5).

## **Over-the-Counter (OTC) Medication Sales**

In week 45 of 2019, the majority of individual local over-the-counter medication category sale trends tracked increased (decrease in thermometer sales; increase in cough and cold, chest rub, electrolyte, pediatric anti-fever, adult anti-fever, and throat lozenge sales) compared to last week.

## **Additional Influenza Activity Web Links:**

Ohio Seasonal Flu Surveillance: <https://odh.ohio.gov>

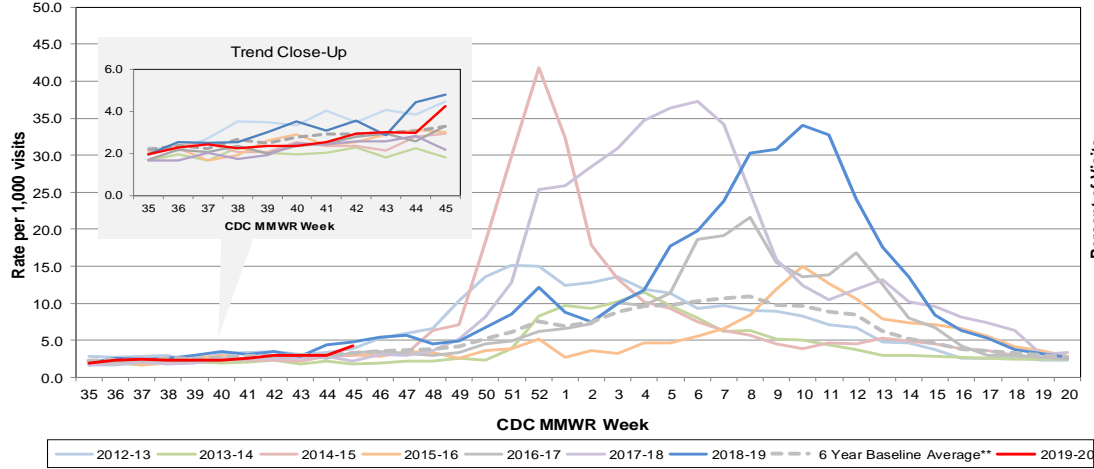
CDC National Seasonal Flu Surveillance Reports: <http://www.cdc.gov/flu/weekly/>

World Health Organization Situation Updates: [http://www.who.int/influenza/surveillance\\_monitoring/en/](http://www.who.int/influenza/surveillance_monitoring/en/)

<sup>1</sup>Note: County level athenaHealth® network primary care medical claims data is no longer available.

# Columbus & Franklin County Influenza Monitoring Summary – Week 45, 2020 (11/3/2019-11/9/2019)

**Figure 1: Ohio Outpatient Primary Care Provider Influenza or Influenza-Like-Illness Visit Rate\***

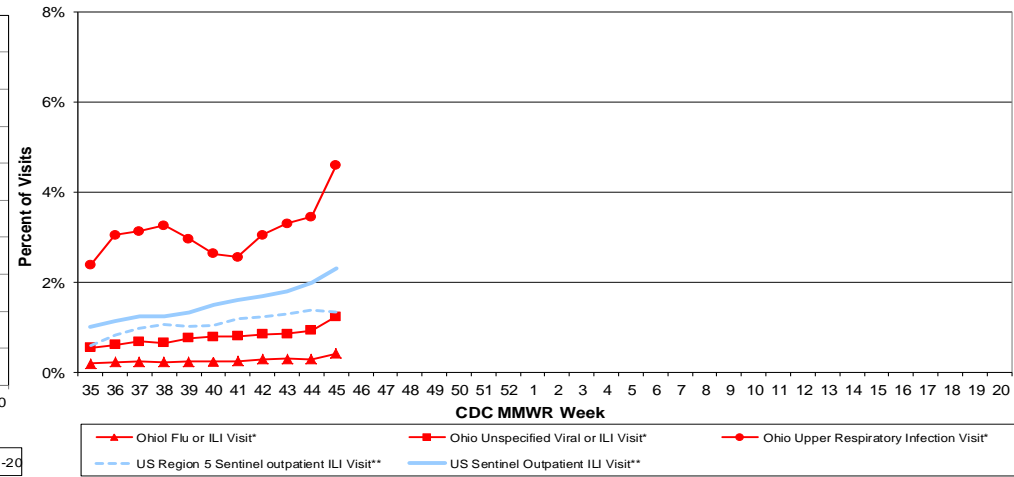


\*Source: Ohio (Statewide) medical claims data from athenaHealth®

\*\*Seasons: 2010-11, 2011-12, 2012-13, 2013-14, 2015-16, 2016-17

Note: athenaHealth® claims data are subject to filing and processing time lags. Historical data are updated when they are received.

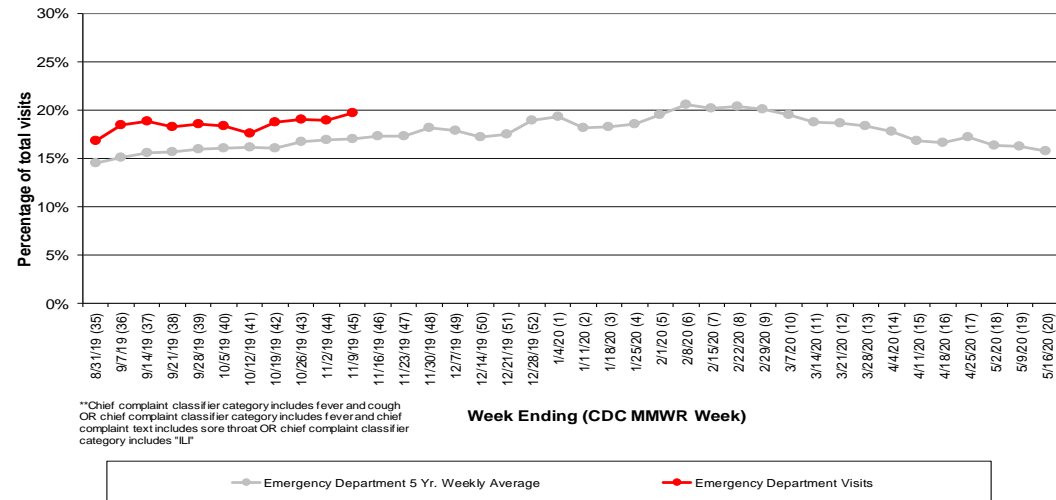
**Figure 2: Percentage of Ohio Outpatient Participating Provider\* and CDC National Outpatient Sentinel Health Care Provider\*\* visits for ILI and Associated Illnesses, 2019-20**



\*Source: Ohio (statewide) medical claims data provided by athenaHealth®. Data are subject to filing and processing time lags. Historical data are updated when received.

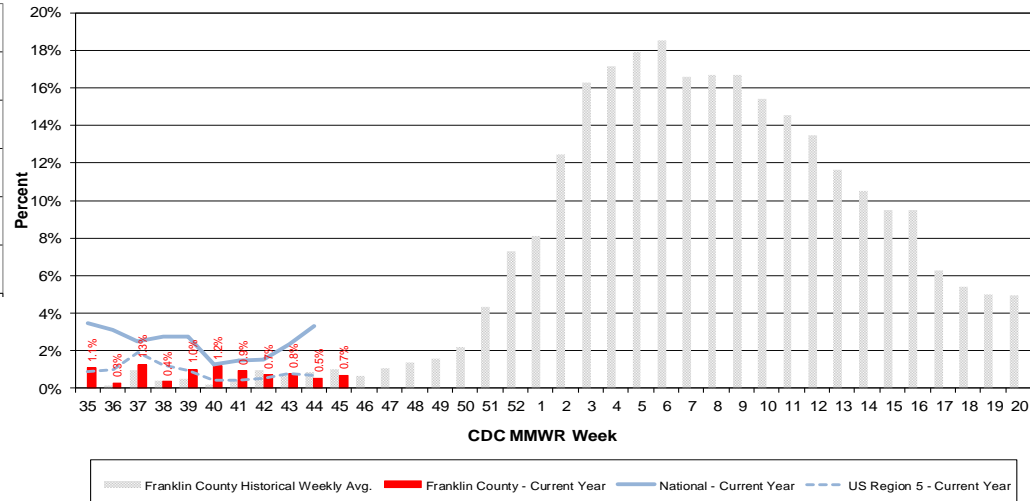
\*\*Source: U.S. Outpatient Influenza-like Illness Surveillance Network (ILINet) sentinel provider visits.

**Figure 3: Franklin County Resident ILI Defined\*\* ED Visits, 2019-20, Franklin County, OH**



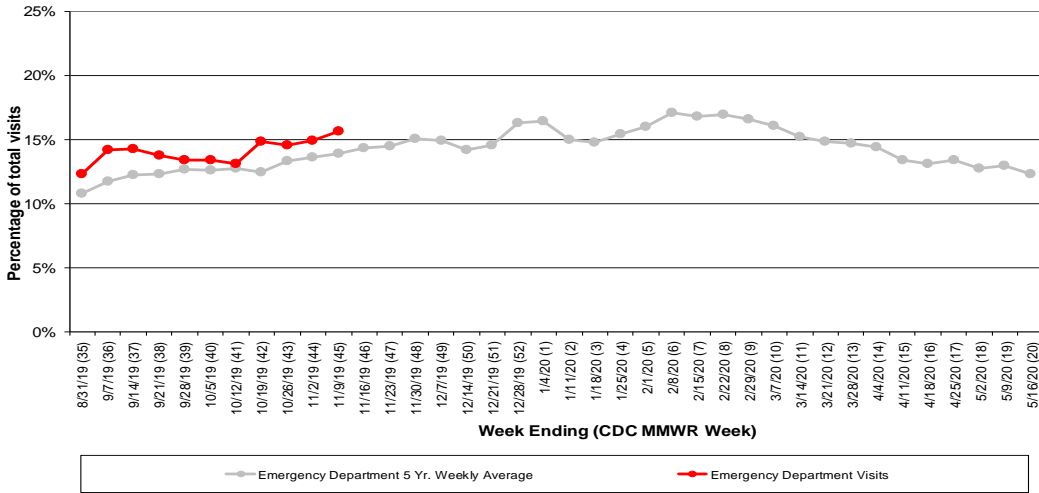
\*\*Chief complaint classifier category includes fever and cough OR chief complaint classifier category includes fever and chief complaint text includes sore throat OR chief complaint classifier category includes "ILI"

**Figure 4: Percentage of Local Reporting and National Laboratory Positive Influenza Tests by Week, 2019-20**

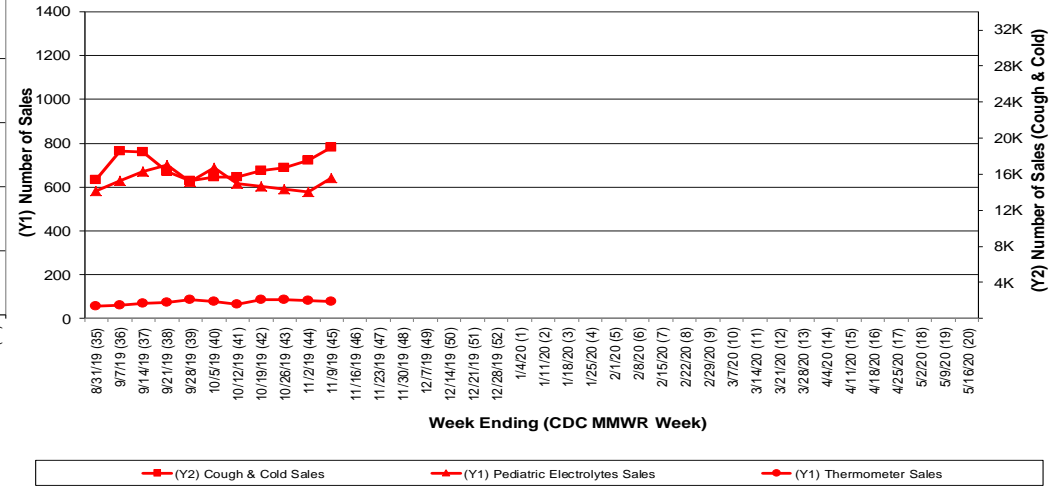


## Columbus & Franklin County Influenza Monitoring Summary – Week 45, 2020 (11/3/2019-11/9/2019)

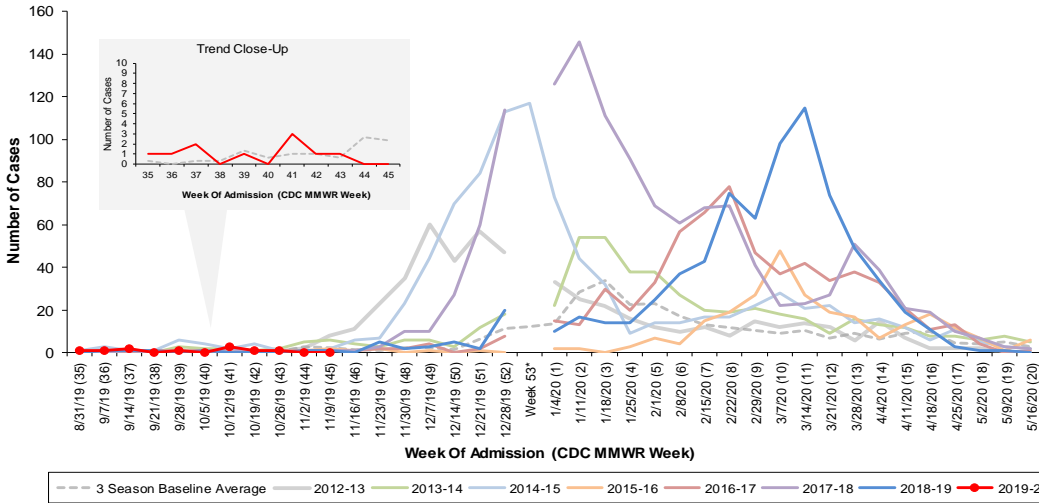
**Figure 5: Franklin County Resident Respiratory ED Visits, 2019-20, Franklin County, OH**



**Figure 6: Selected Number of Over-the-Counter Medication Total Sales, 2019-20, Franklin County, OH**



**Figure 7: Columbus and Franklin County Jurisdiction Confirmed Influenza Associated Hospitalizations by Hospital Admission Week (As of 11/10/2019)**



\*Note: Certain years have a 53rd week (e.g., season 2014-15) based on CDCs MMWR Weeks.

**Columbus and Franklin County, OH Jurisdiction Confirmed Influenza Hospitalization Cumulative Rates (per 100,000) by Age-Group and Admission Week, 2019-2020 Season**

