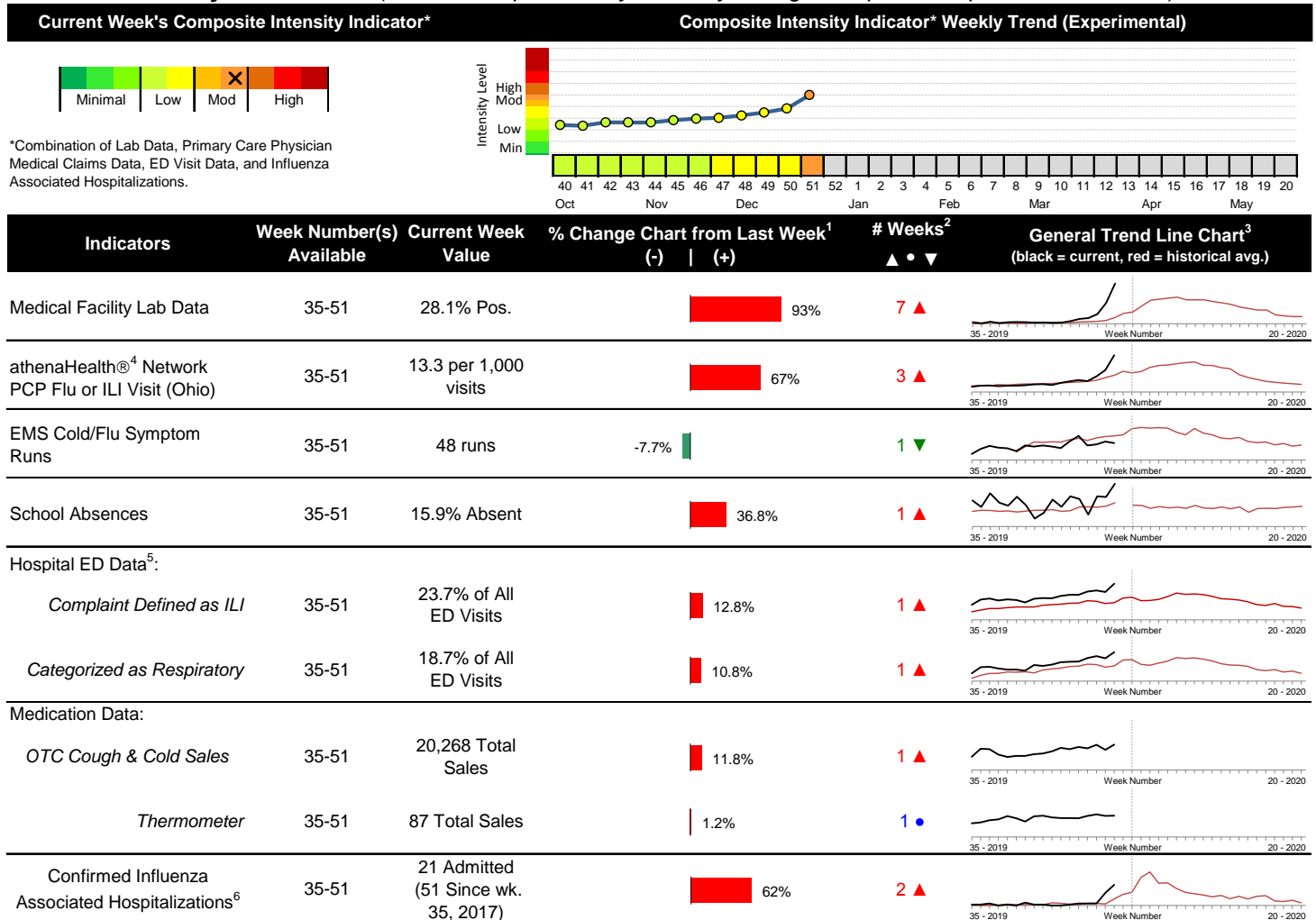


## 2019-2020 Columbus & Franklin County Seasonal Influenza Activity Weekly Summary (Week 51, Dec. 15<sup>th</sup>, 2019– Dec. 21<sup>st</sup>, 2019)

### Highlights

- In week 51 of 2019, trends for the individual flu activity indicators generally increased compared to the previous week. Substantial increases were seen in medical facility lab positives, PCP visits for flu or ILI, ED visits for ILI and respiratory symptoms, and influenza-associated hospitalizations. As a whole, flu intensity (composite indicator) increased substantially and is now MODERATE, bordering high.
- Geographic spread and local intensity designation (Click [here](#) for definitions) = WIDESPREAD, MODERATE
- Local medical facility labs reported 1,921 tests run with 540 (28.1%) positive results for week 51 of 2019.
- The percentage of ED visits for both influenza-like-illness (ILI) and respiratory symptoms increased compared to last week.
- In week 51 of 2019, the trends for individual local over-the-counter medication category sales tracked were mixed (decrease in electrolyte, chest rub, and adult anti-fever sales; increase in cough and cold and pediatric anti-fever sales; stable thermometer and throat lozenge sales) compared to last week.
- Updated national activity was not available at the time of this report. In week 50, U.S. seasonal influenza activity continues to increase and has been elevated for six weeks now. Please [visit the CDC website for specific information](#).

### Local Flu Activity Dashboard *(All data are preliminary and may change as updated reports are received.)*



Reportable Conditions (Cumulative Numbers as of Dec. 26, 2019)	2014	2015	2016	2017	2018	2019 YTD
Pediatric Influenza Associated Death Reported by Year (based on date of death)	0	0	0	0	0	1
Influenza Associated Hospitalizations (IAH) Reported by Admission Year <sup>6</sup>	875	447	293	846	1,036	776
<i>IAH comparison by Flu Season (October through May or Weeks 35 - 20)</i>	<u>2014-15</u>	<u>2015-16</u>	<u>2016-17</u>	<u>2017-18</u>	<u>2018-19</u>	<u>2019-20*</u>
<i>*Current season figures (2019-20) are from week 35 through week 51 of 2019.</i>	871	265	619	1,235	746	51

<sup>1</sup>Interpret with caution. Indicators with small numbers subject to large weekly percentage fluctuations.

<sup>2</sup>Number of weeks "▲" = Increase (>2%), "▼" = Decrease (>2%), "●" = Stable (-2% to +2%).

<sup>3</sup>Black line is current years data. Based on data availability, red line is historical average (excluding pandemic year).

<sup>4</sup>Data Source: Medical claims data from athenaHealth® (www.athenahealth.com). Rate of Flu or ILI visits to Ohio (statewide) athenaHealth® network primary care practices/physicians. Claims data are subject to filing and processing time lags. Historical data are updated when they are received.

<sup>5</sup>Franklin County, OH residents only (based on zipcode). NOTE: Excludes one hospital system included in the past due to technical changes affecting visit classification assignment and numbers.

<sup>6</sup>Confirmed cases only. Based on jurisdiction equal to Franklin County or City of Columbus and admission date available in ODRS.

## **Influenza Morbidity and Influenza-Like Illness (ILI) Reports**

In week 51, the preliminary Ohio<sup>1</sup> (statewide) influenza and influenza-like-illness (ILI) visit rate to athenaHealth® primary care providers (13.3 per 1,000 visits) increased compared to the previous week and is above its baseline average for the week (Figure 1). The week 51 percentage of all Emergency Department (ED) visits categorized as ILI increased compared to the previous week (Figure 3) and is above its historic baseline for the week.

Updated national data was not available at the time of this report. Nationally, during week 50 of 2019, 3.9% of patient visits reported through ILINet were due to influenza-like illness (ILI). The percentage is above the national baseline of 2.4% for week 50.

## **Laboratory Surveillance**

During week 51 of 2019, reporting Franklin County sentinel medical facility laboratories tested 1,921 specimens, with 540 (14.6%) positive (Figure 4). The total number of tests done by local reporting labs from week 35 of 2019 through week 51 of 2019 is 17,372 with 1,076 (6.2%) positives (229 type A, 846 type B, 0 type A and B, 1 type unknown).

Updated national data was not available at the time of this report. Nationally in week 50 of 2019, clinical laboratories reported 33,918 specimens tested for influenza viruses, 5,515 (16.3%) of which were positive (1,735 type A, 3,780 type B). In week 50, public health laboratories reported testing 1,413 specimens, 733 of which were positive (282 type A – of which 231 were A(H1N1)pdm09, 34 were H3N2, and 17 were not subtyped; 451 type B – of which 7 were Yamagata lineage, 310 were Victoria lineage, and 134 where lineage was not performed). Please visit the CDC website for more information, including cumulative data.

In week 51 of 2019, Ohio clinical labs reported 22,916 specimens tested for influenza this season thus far. Positive results include: (28) A(H1N1)pdm09; (2) A/H3N2; (254) Flu A Not Subtyped, and (860) Flu B (through 12/21/2019). In week 51 of 2019, ODH Public Health Lab reported 97 positive influenza tests from various submitters this season so far. Positive results include: (30) A(H1N1)pdm09; (12) A/H3N2; (55) Influenza B (through 12/21/2019). Please visit the ODH website for more information.

## **ED Respiratory Visits**

In the 50<sup>th</sup> week of 2019, the percentage of all ED visits categorized as respiratory decreased compared to the percentage seen the previous week and is above its baseline for the week (Figure 5).

## **Over-the-Counter (OTC) Medication Sales**

In week 51 of 2019, the trends for individual local over-the-counter medication category sales tracked were mixed (decrease in electrolyte, chest rub, and adult anti-fever sales; increase in cough and cold and pediatric anti-fever sales; stable thermometer and throat lozenge sales) compared to last week.

## **Additional Influenza Activity Web Links:**

Ohio Seasonal Flu Surveillance: <https://odh.ohio.gov>

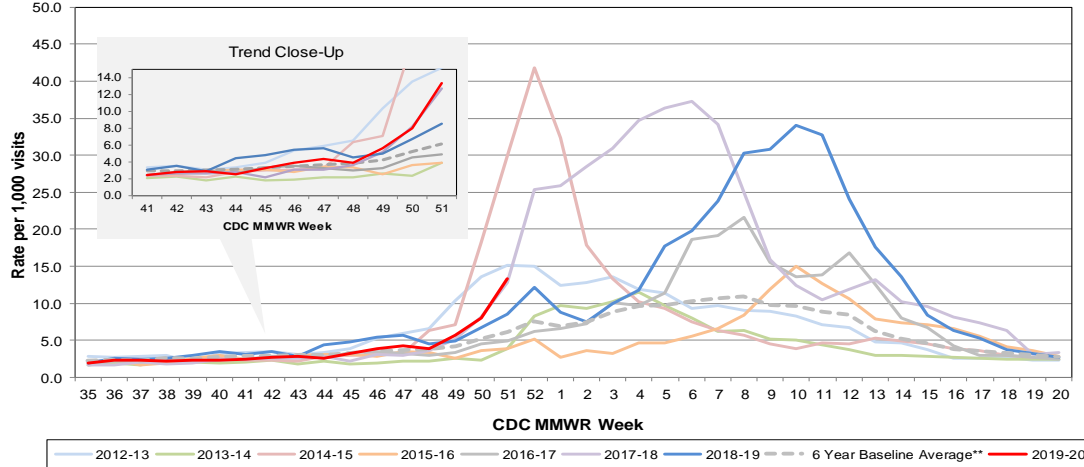
CDC National Seasonal Flu Surveillance Reports: <http://www.cdc.gov/flu/weekly/>

World Health Organization Situation Updates: [http://www.who.int/influenza/surveillance\\_monitoring/en/](http://www.who.int/influenza/surveillance_monitoring/en/)

<sup>1</sup>Note: County level athenaHealth® network primary care medical claims data is no longer available.

Columbus & Franklin County Influenza Monitoring Summary – Week 51, 2019 (12/15/2019-12/21/2019)

Figure 1: Ohio Outpatient Primary Care Provider Influenza or Influenza-Like-Illness Visit Rate\*

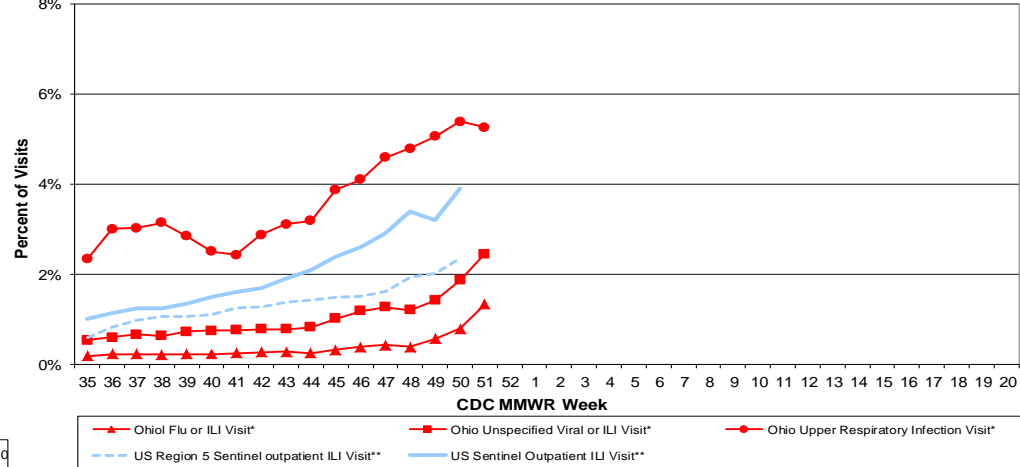


\*Source: Ohio (Statewide) medical claims data from athenaHealth®

\*\*Seasons: 2010-11, 2011-12, 2012-13, 2013-14, 2015-16, 2016-17

Note: athenaHealth® claims data are subject to filing and processing time lags. Historical data are updated when they are received.

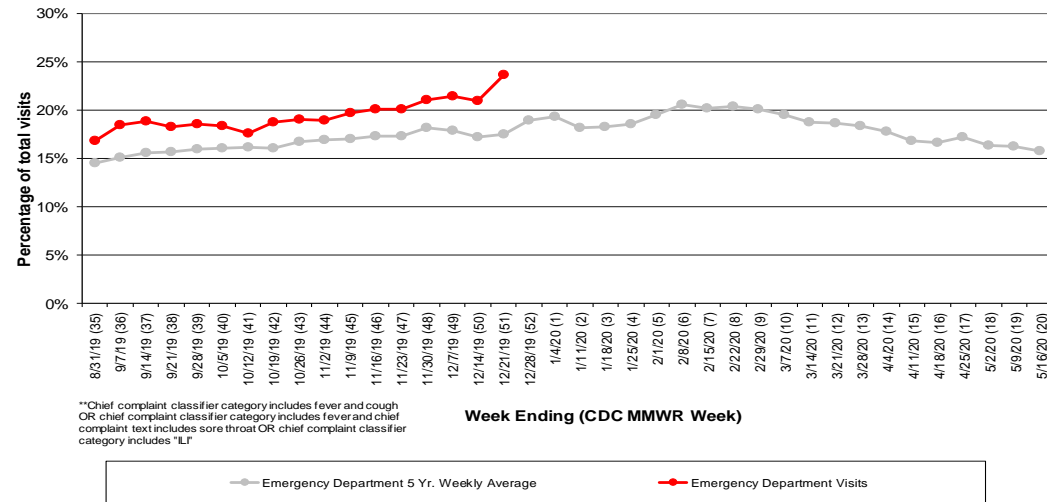
Figure 2: Percentage of Ohio Outpatient Participating Provider\* and CDC National Outpatient Sentinel Health Care Provider\*\* visits for ILI and Associated Illnesses, 2019-20



\*Source: Ohio (statewide) medical claims data provided by athenaHealth®. Data are subject to filing and processing time lags. Historical data are updated when received.

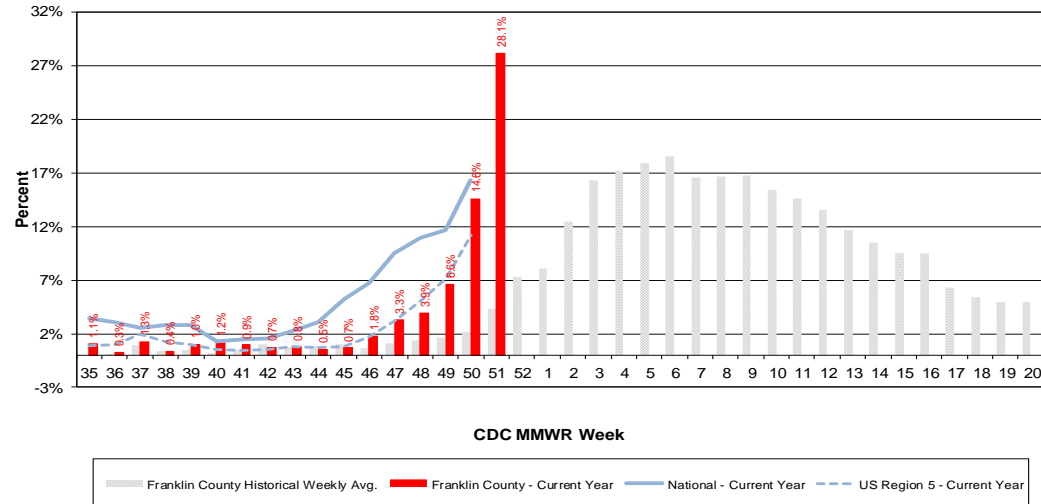
\*\*Source: U.S. Outpatient Influenza-like Illness Surveillance Network (ILINet) sentinel provider visits.

Figure 3: Franklin County Resident ILI Defined\*\* ED Visits, 2019-20, Franklin County, OH



\*\*Chief complaint classifier category includes fever and cough OR chief complaint classifier category includes fever and chief complaint text includes sore throat OR chief complaint classifier category includes "IL"

Figure 4: Percentage of Local Reporting and National Laboratory Positive Influenza Tests by Week, 2019-20



Columbus & Franklin County Influenza Monitoring Summary – Week 51, 2019 (12/15/2019-12/21/2019)

Figure 5: Franklin County Resident Respiratory ED Visits, 2019-20, Franklin County, OH

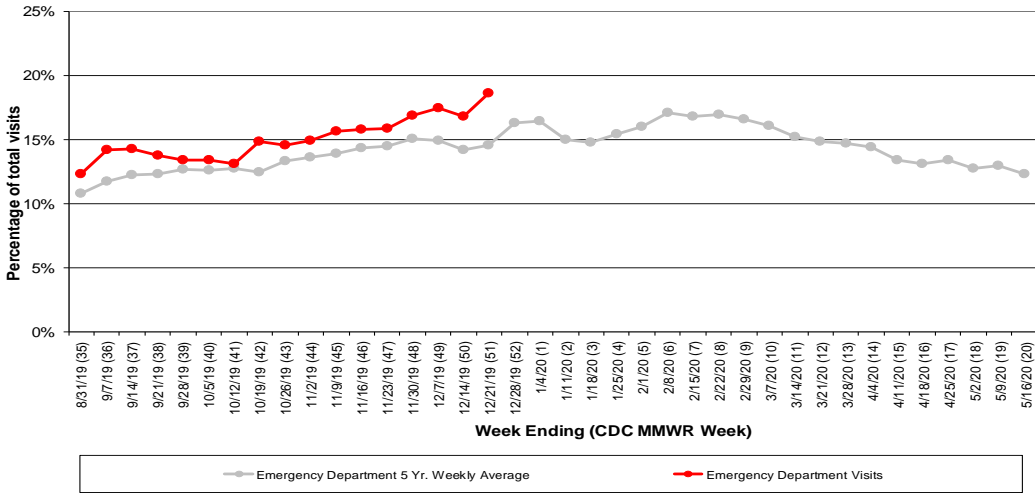


Figure 6: Selected Number of Over-the-Counter Medication Total Sales, 2019-20, Franklin County, OH

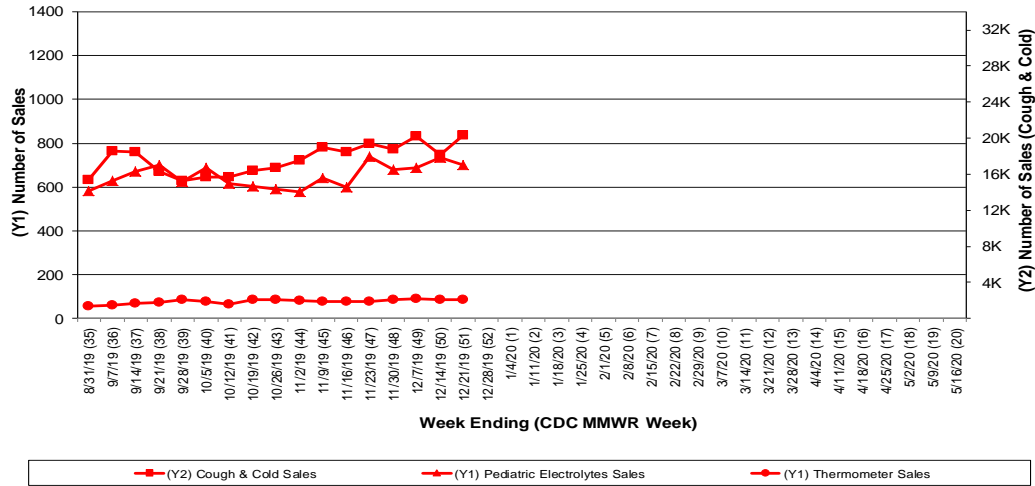
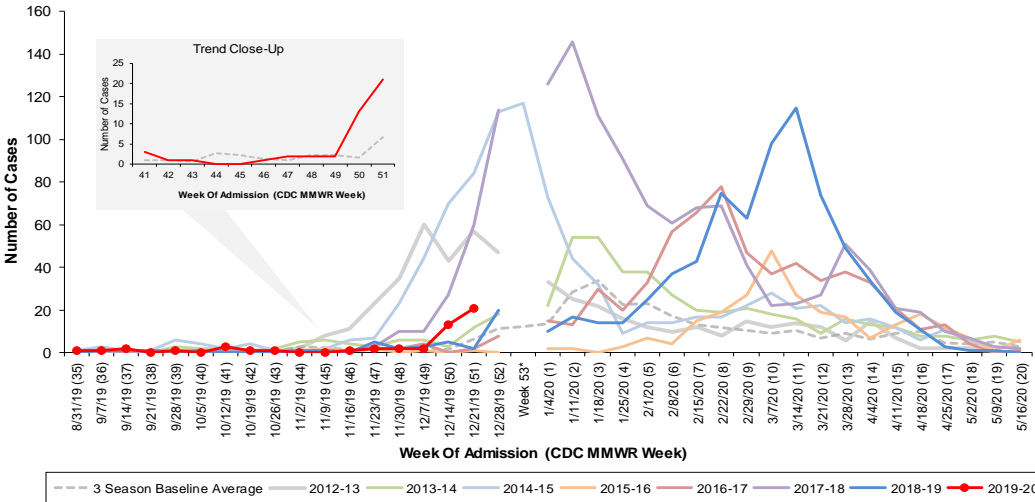


Figure 7: Columbus and Franklin County Jurisdiction Confirmed Influenza Associated Hospitalizations by Hospital Admission Week (As of 12/26/2019)



\*Note: Certain years have a 53rd week (e.g., season 2014-15) based on CDC's MMWR Weeks.

Columbus and Franklin County, OH Jurisdiction Confirmed Influenza Hospitalization Cumulative Rates (per 100,000) by Age-Group and Admission Week, 2019-2020 Season

