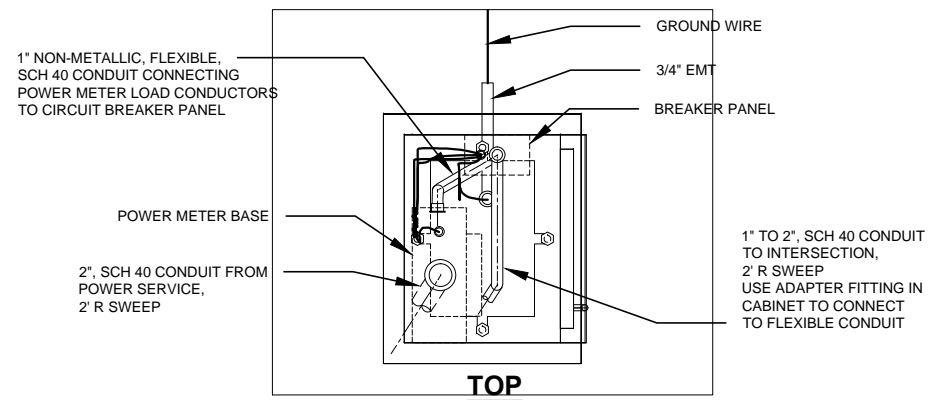
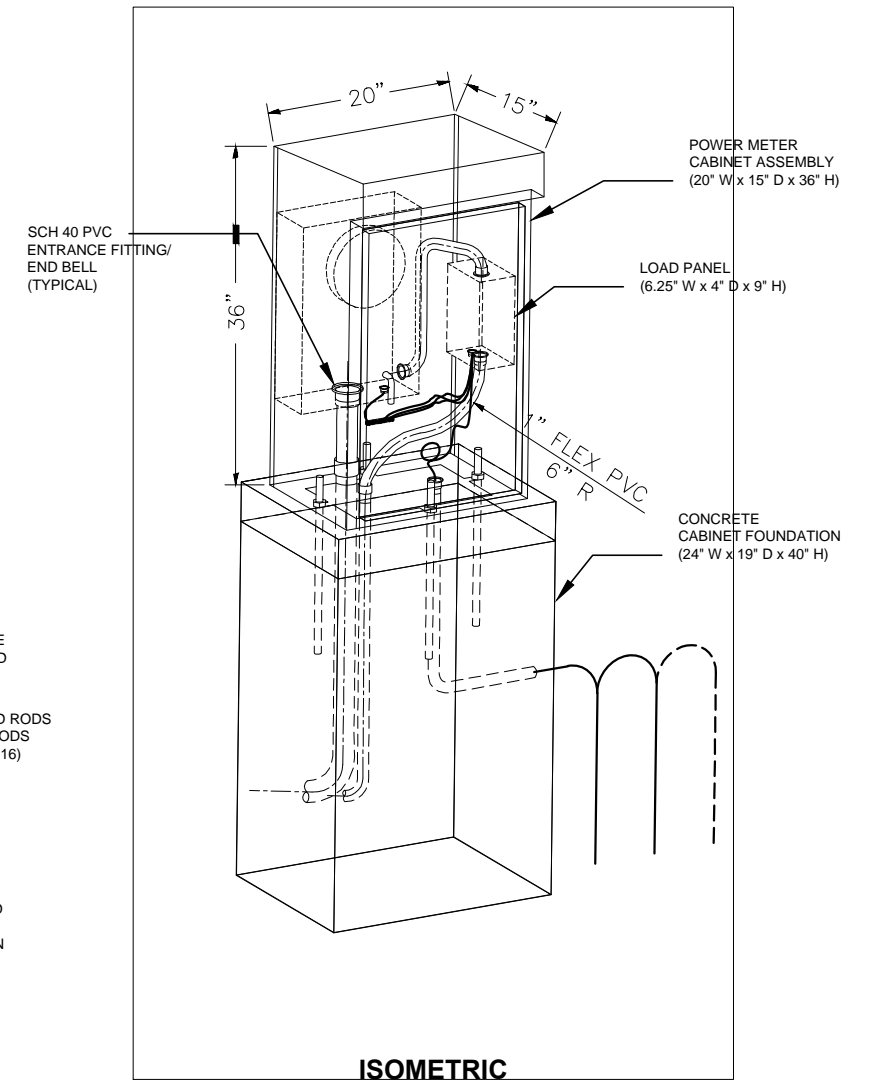
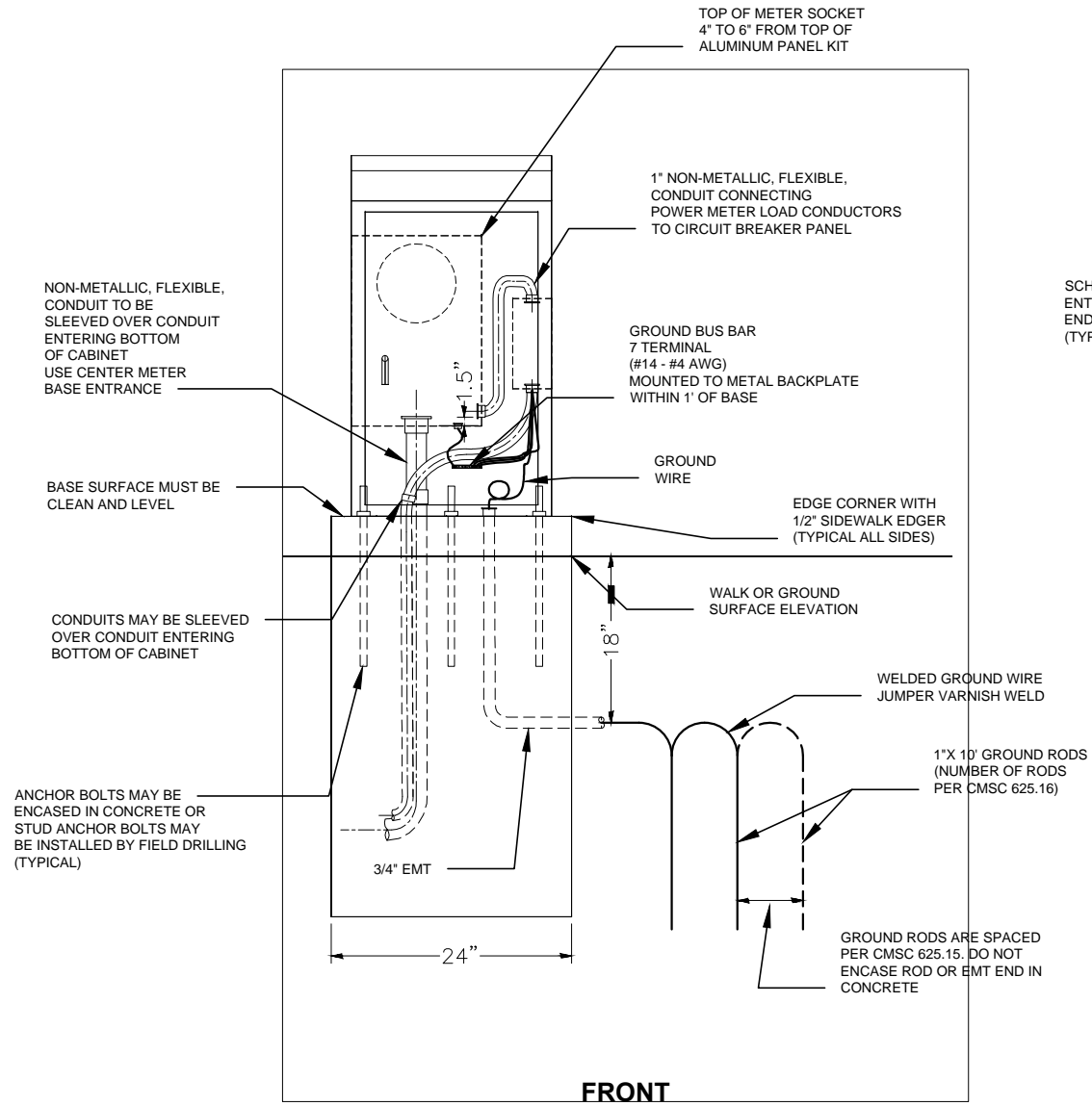
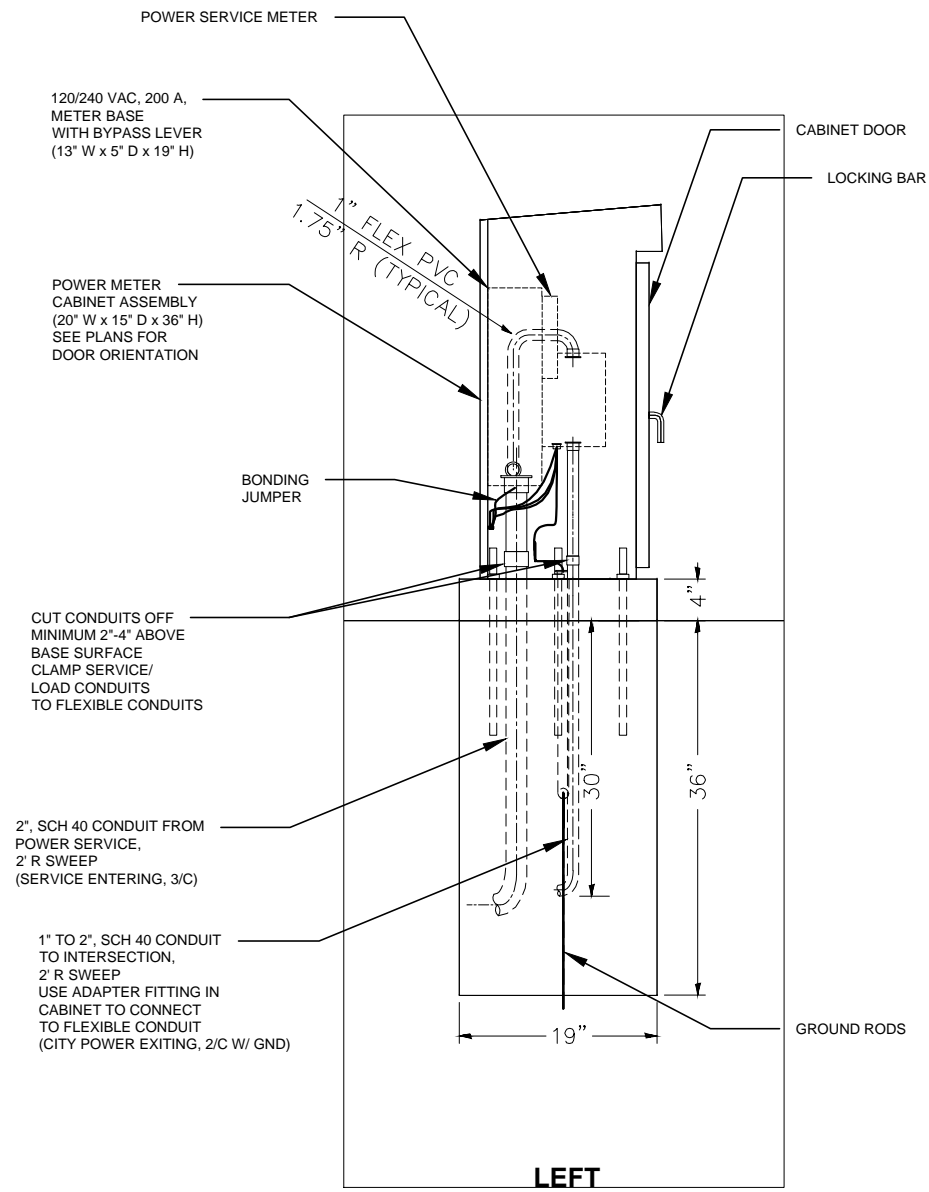


POWER METER CABINET DETAIL



NOTES

1. USE EXPANSION MATERIAL BETWEEN FOUNDATION CONCRETE AND OTHER CONCRETE AREAS.
2. ANCHOR BOLTS AND CONDUITS ARE INCIDENTAL TO THIS PAY ITEM.
3. PERMANENTLY EMBED A VISIBLE MARKER ON TOP OF THE FOUNDATION 1" FROM THE EDGE AND CENTERED OVER THE EXITING EMT.

REVISED 7-22-2016