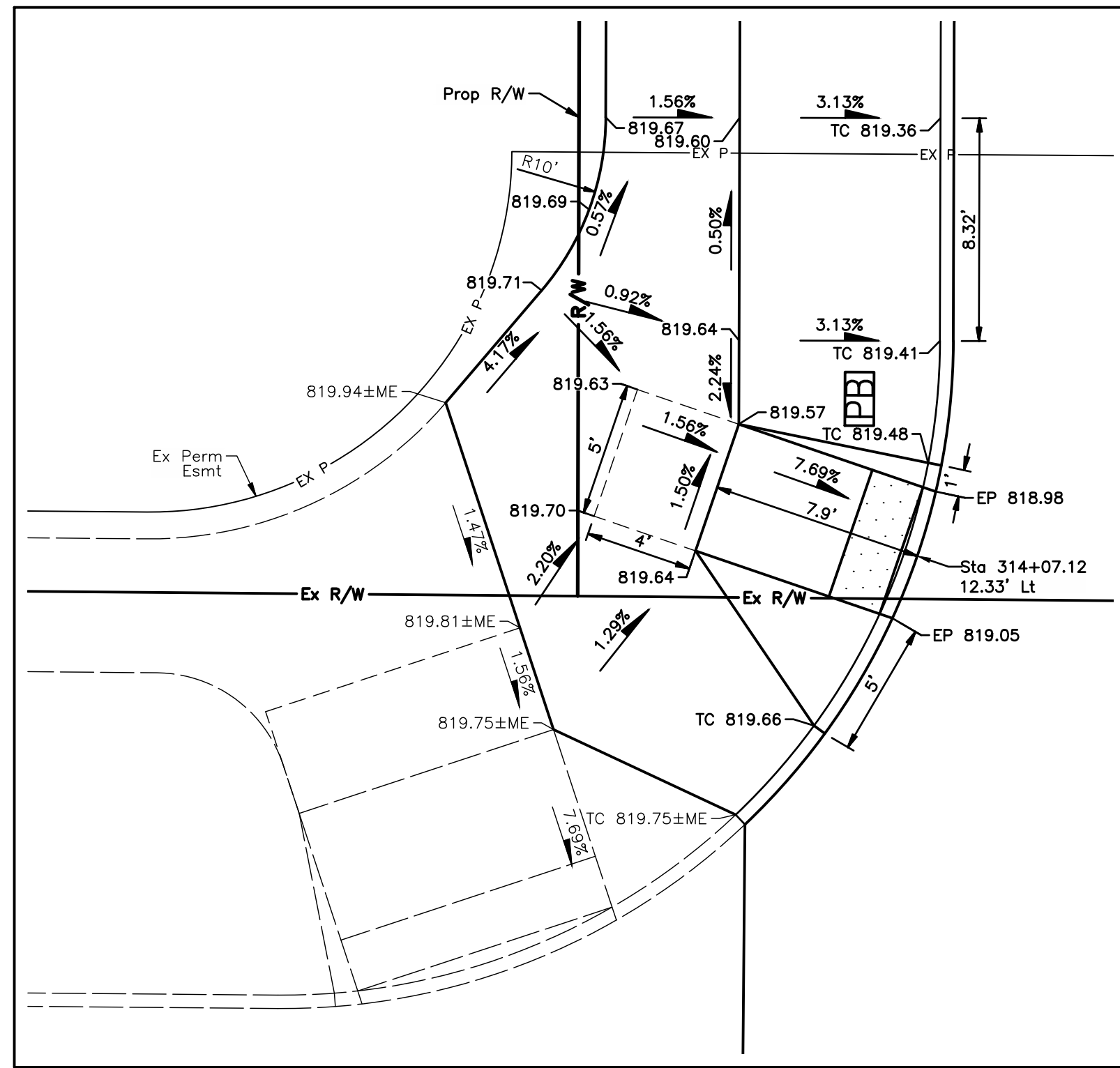
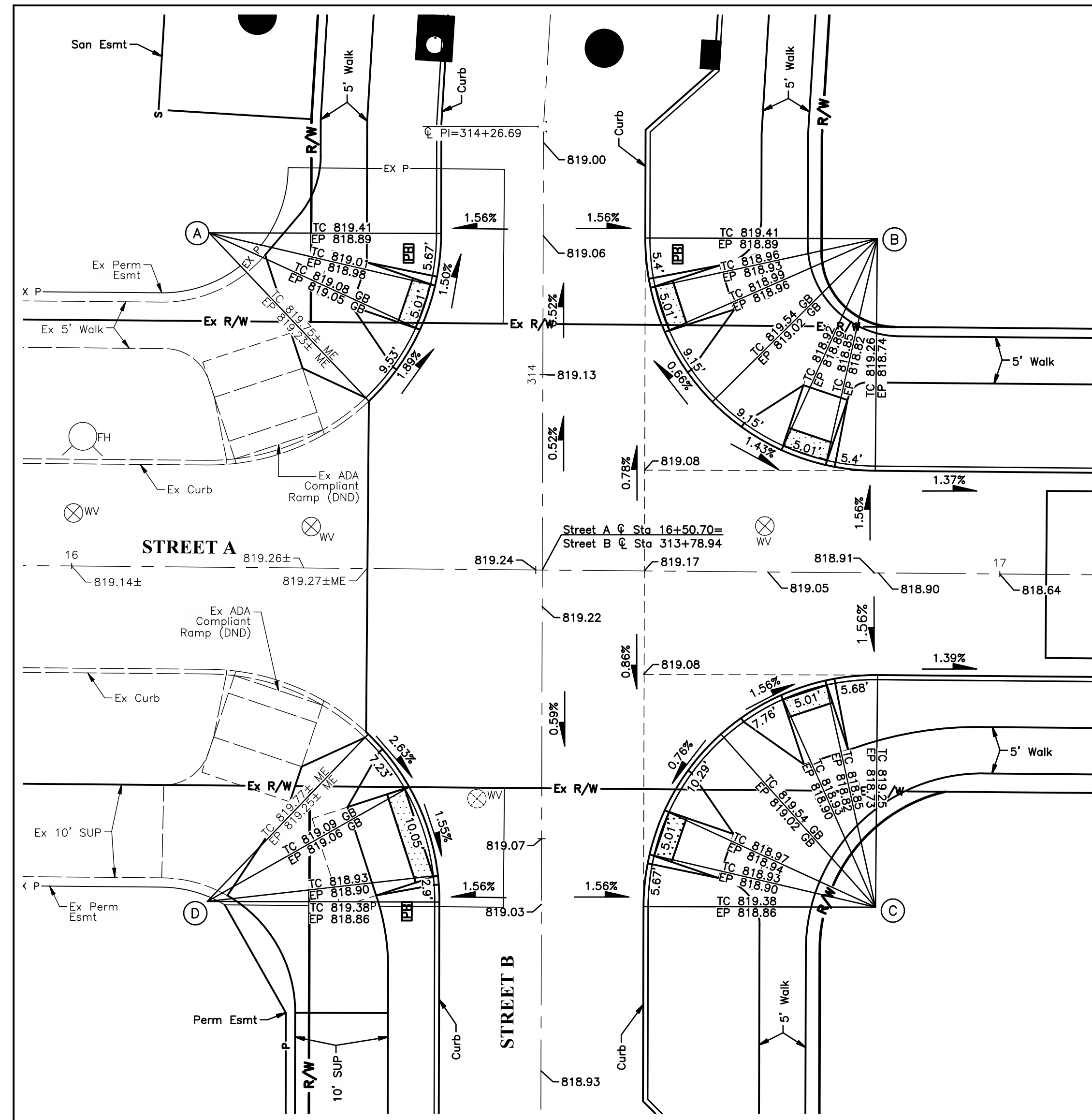


DESIGNER NOTE:
 INTERSECTION DETAILS SHOULD ONLY SHOW PROPOSED AND EXISTING SURFACE FEATURES THAT ARE TO BE PRESENT AT THE COMPLETION OF THE PROJECT. DO NOT SHOW ITEMS THAT ARE TO BE REMOVED BY THE PROJECT. UNDERGROUND FACILITIES ARE ALSO NOT TO BE SHOWN.



② CURB RAMP DETAIL
 SCALE: 1" = 5'



INTERSECTION DETAIL AT STREET A & STREET B
 SCALE: 1" = 10'

DESIGNER NOTE:
 INTERSECTION DETAIL TO BE AT A 1"=10' SCALE UNLESS THE CITY PROJECT MANAGER GRANTS A WRITTEN VARIANCE. CURB RAMP DETAILS TO BE AT A 1"=5' SCALE.

DESIGNER NOTE:
 THE DESIGNER SHALL ENSURE THAT THE PAVEMENT OR GUTTER AT THE FACE OF CURB AT CURB RAMPS POSITIVELY FLOWS PAST CURB RAMP WHERE INTENDED. REFERENCE CURB AND GUTTER STANDARD DRAWING FOR GUTTER SLOPE TRANSITIONS AT CURB RAMPS. SLOPES AT THE FACE OF CURB SHALL NOT BE LESS THAN 0.50%.

DESIGNER NOTE:
 ELEVATIONS ALONG CENTERLINE ARE TO BE SHOWN EVERY 25' UNLESS NOTED OTHERWISE.

INTERSECTION DETAIL NOTES

- The Top of Curb is 0.52' above the Edge of Pavement.
- Elevations to the Top of Curb in curbed areas and to the edge of pavement in pavement areas.
- The curve data is calculated at the face of curb.
- Reference cross sections for sidewalk grading details.

LEGEND

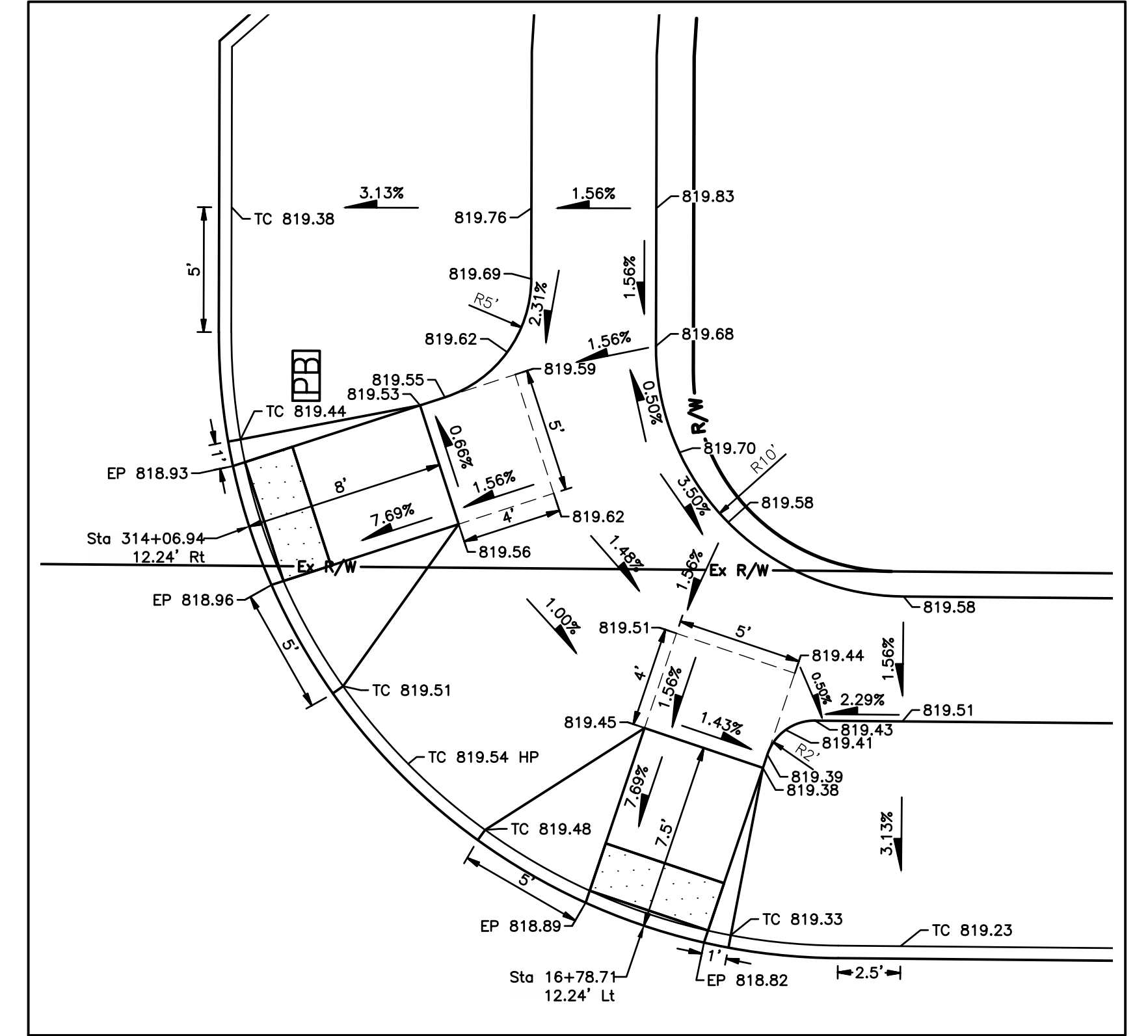
- XXX.XX± Proposed Elevations
- XXX.XX± Existing Elevations
- TC = Top of Curb/Top of Casting
- TDC = Top of Dropped Curb
- FC = Face of Curb
- EP = Edge of Pavement
- ME = Match Existing
- GB = Grade Break
- LP = Low Point
- FW = Face of Wall

- ① Curb Ramp Number
- Ⓐ Curve Data, See Table This Sheet
- ▨ Detectable Warning

Note A: Reference Pavement Detail sheet, XX & XX for pavement material and sidewalk thickness details.

	DELTA	RADIUS	TANGENT	LENGTH	EXTERNAL	MIDDLE	FILLET AREA	CHORD DISTANCE	RADIUS POINT
A	46°19'05"	25.00'	10.69'	20.21'	2.19'	2.01'	15	19.66'	16+14.49, 36.00' Lt.
B	89°39'23"	25.00'	24.85'	39.12'	10.25'	7.27'	132	35.25'	16+86.49, 36.00' Lt.
C	90°20'38"	25.00'	25.15'	39.42'	10.46'	7.38'	136	35.46'	16+86.92, 36.00' Rt.
D	46°14'57"	25.00'	10.68'	20.18'	2.18'	2.01'	15	19.64'	16+14.92, 36.00' Rt.

DESIGNER NOTE:
 NORTH ARROW SHALL ALWAYS BE UP UNLESS THE CITY PROJECT MANAGER GRANTS A WRITTEN VARIANCE.

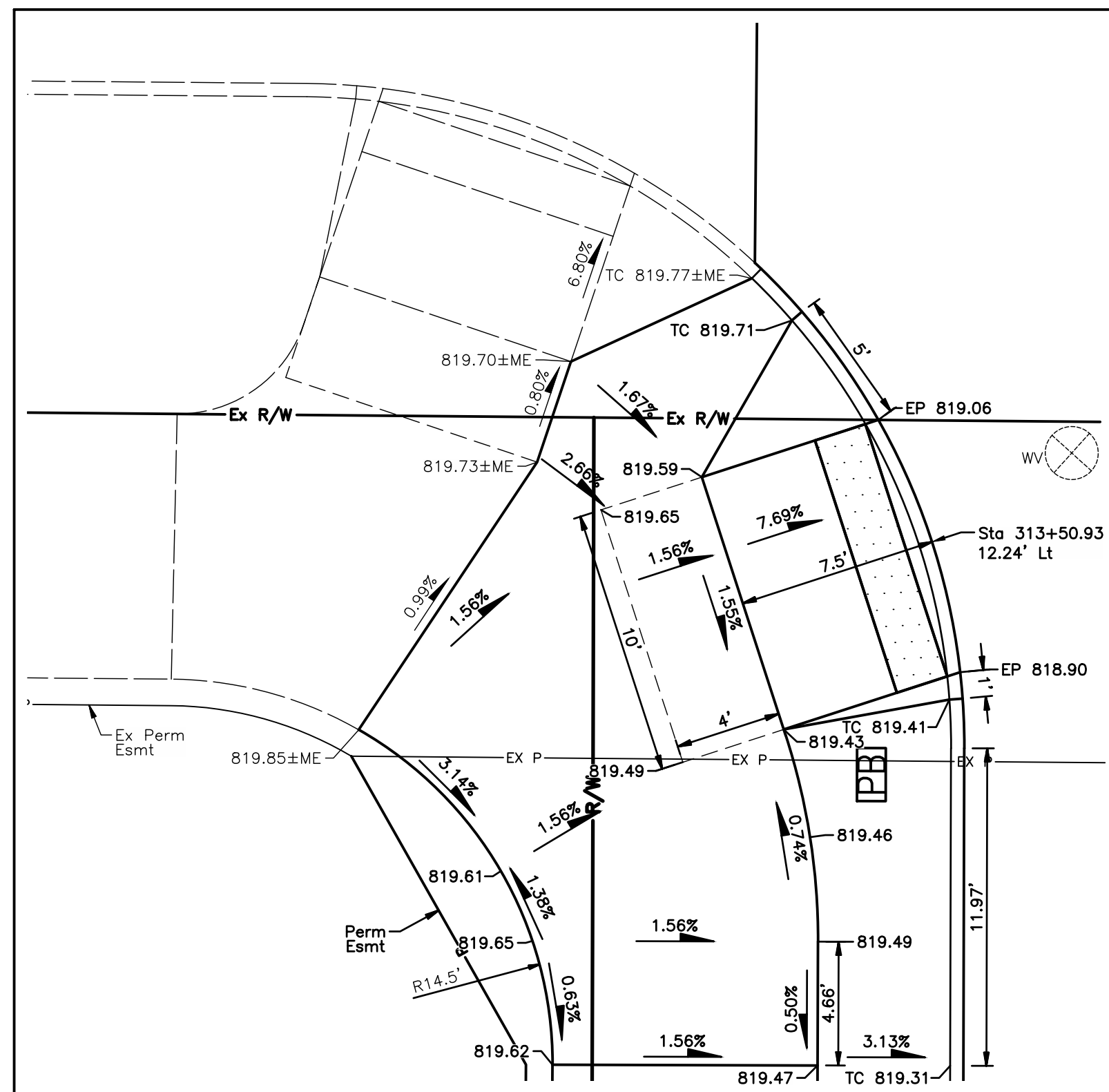


③④ CURB RAMP DETAIL
 SCALE: 1" = 5'

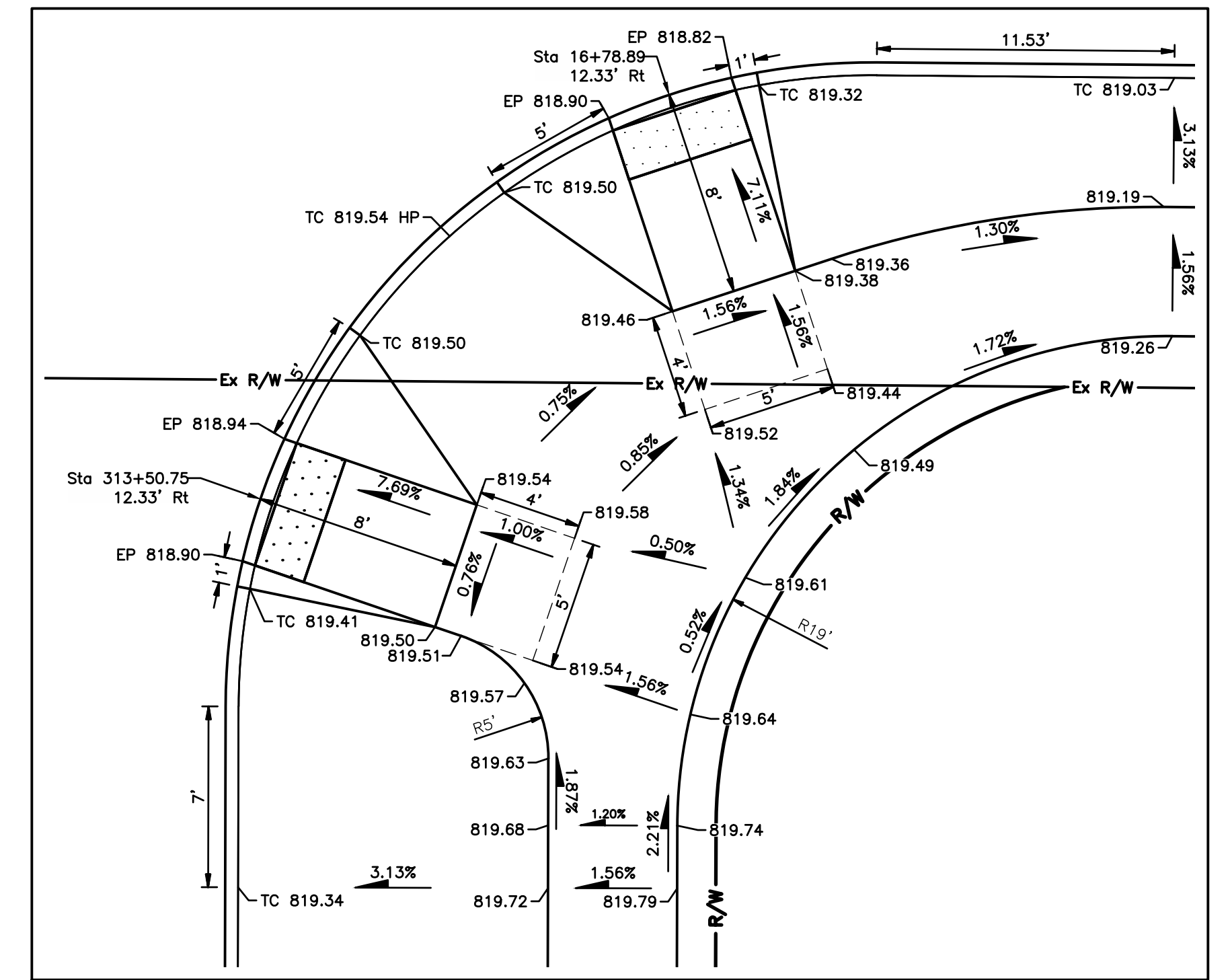
DESIGNER NOTE:
 PAR ROUTE SHALL BE ADEQUATELY DETAILED ON THESE SHEETS. THE DESIGNER MAY EMPLOY THE USE OF DASHED LINES TO ASSIST IN DELINEATING THE PAR WHEN IT DIFFERENTIATES FROM THE TYPICAL SECTION.

DESIGNER NOTE:
 ALL GRADE BREAKS SHALL BE NOTED. FOR THE PAR ROUTE, THE DESIGNER SHOULD INDICATE ALL PAR LOCATIONS UNTIL THE PAR COMPLIES WITH THE TYPICAL SECTION.

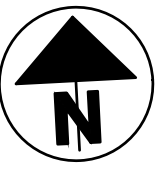
DESIGNER NOTE:
 THE CENTERLINE OF RAMP SHALL BE SET WITH STATIONS AND OFFSETS. THE STATION AND OFFSET LABEL SHALL BE PLACED AT THE LOCATION WHERE THE RAMP CENTERLINE AND THE FACE OF CURB LINE INTERSECT. THE STATION AND OFFSET LABEL SHALL BE CALCULATED FROM THE ADJACENT ROAD CENTERLINE.



⑦ CURB RAMP DETAIL
 SCALE: 1" = 5'



⑤⑥ CURB RAMP DETAIL
 SCALE: 1" = 5'



As Noted

SCALE
 CALCULATED XX
 CHECKED XX

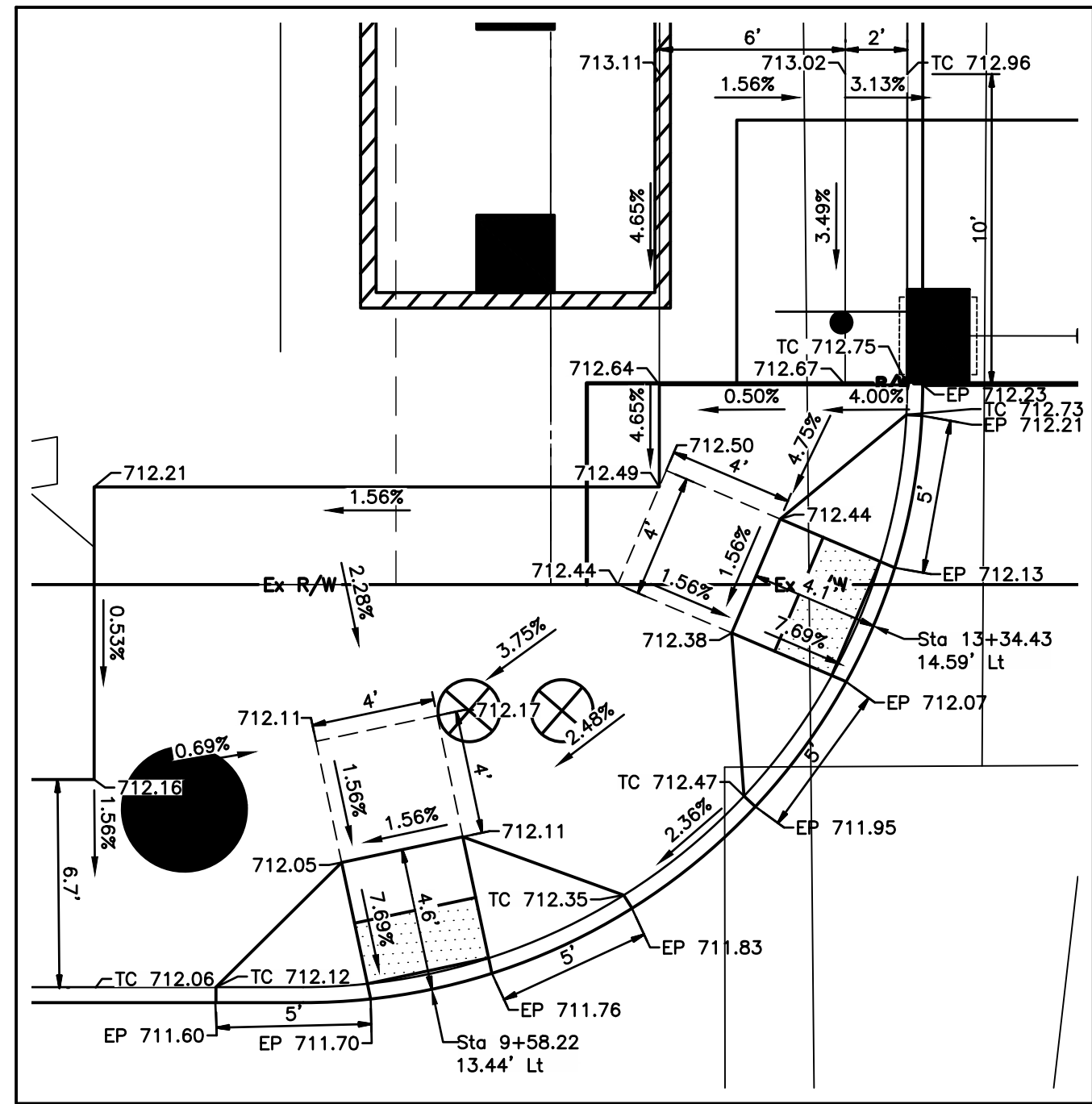
INTERSECTION DETAILS
 STREET A AT STREET B

IMPROVEMENTS OF...
 STREET A FROM STREET B TO STREET C

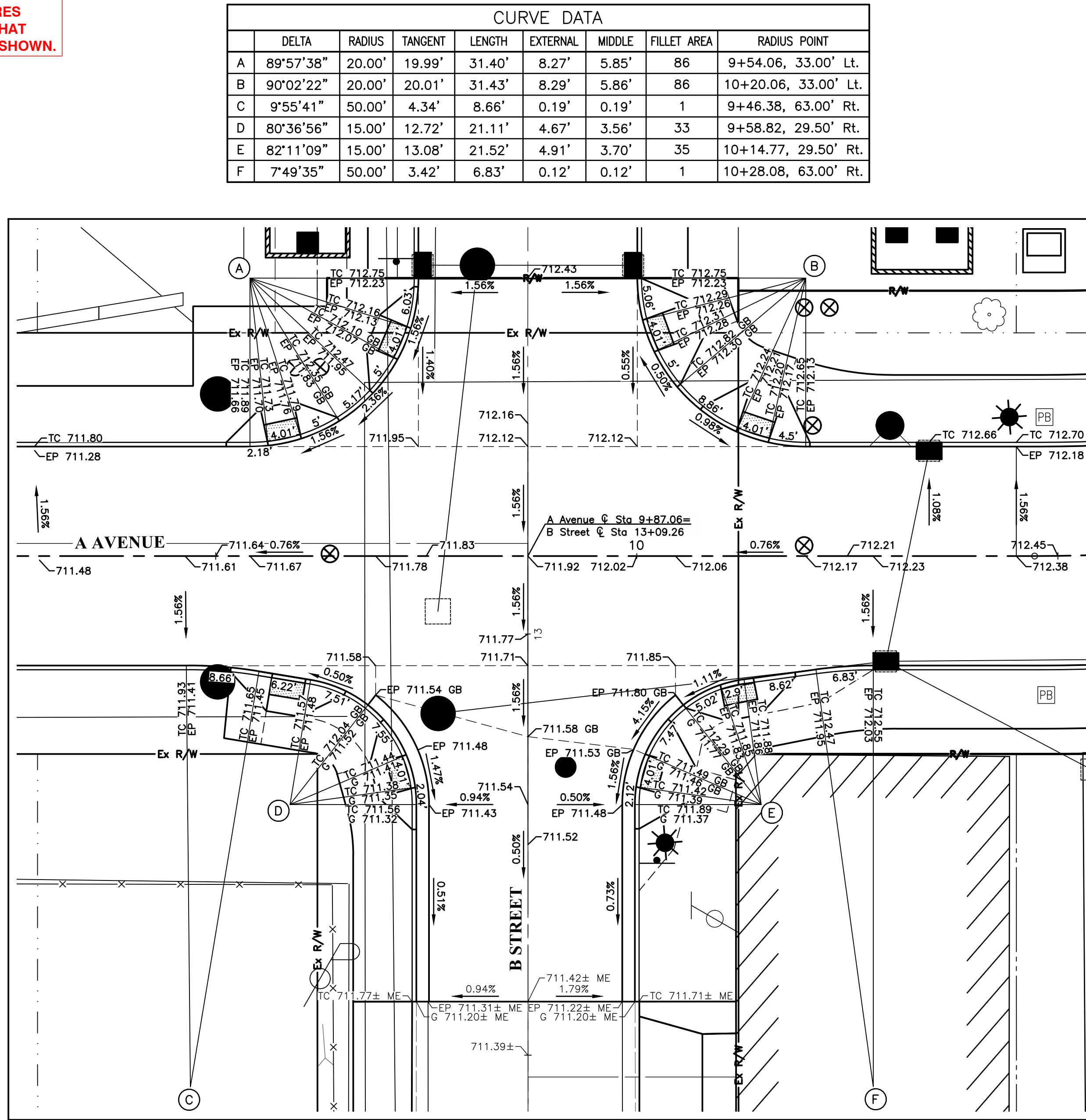
XXXX-E

XX
 XXX

DESIGNER NOTE:
 INTERSECTION DETAILS SHOULD ONLY SHOW PROPOSED AND EXISTING SURFACE FEATURES THAT ARE TO BE PRESENT AT THE COMPLETION OF THE PROJECT. DO NOT SHOW ITEMS THAT ARE TO BE REMOVED BY THE PROJECT. UNDERGROUND FACILITIES ARE ALSO NOT TO BE SHOWN.

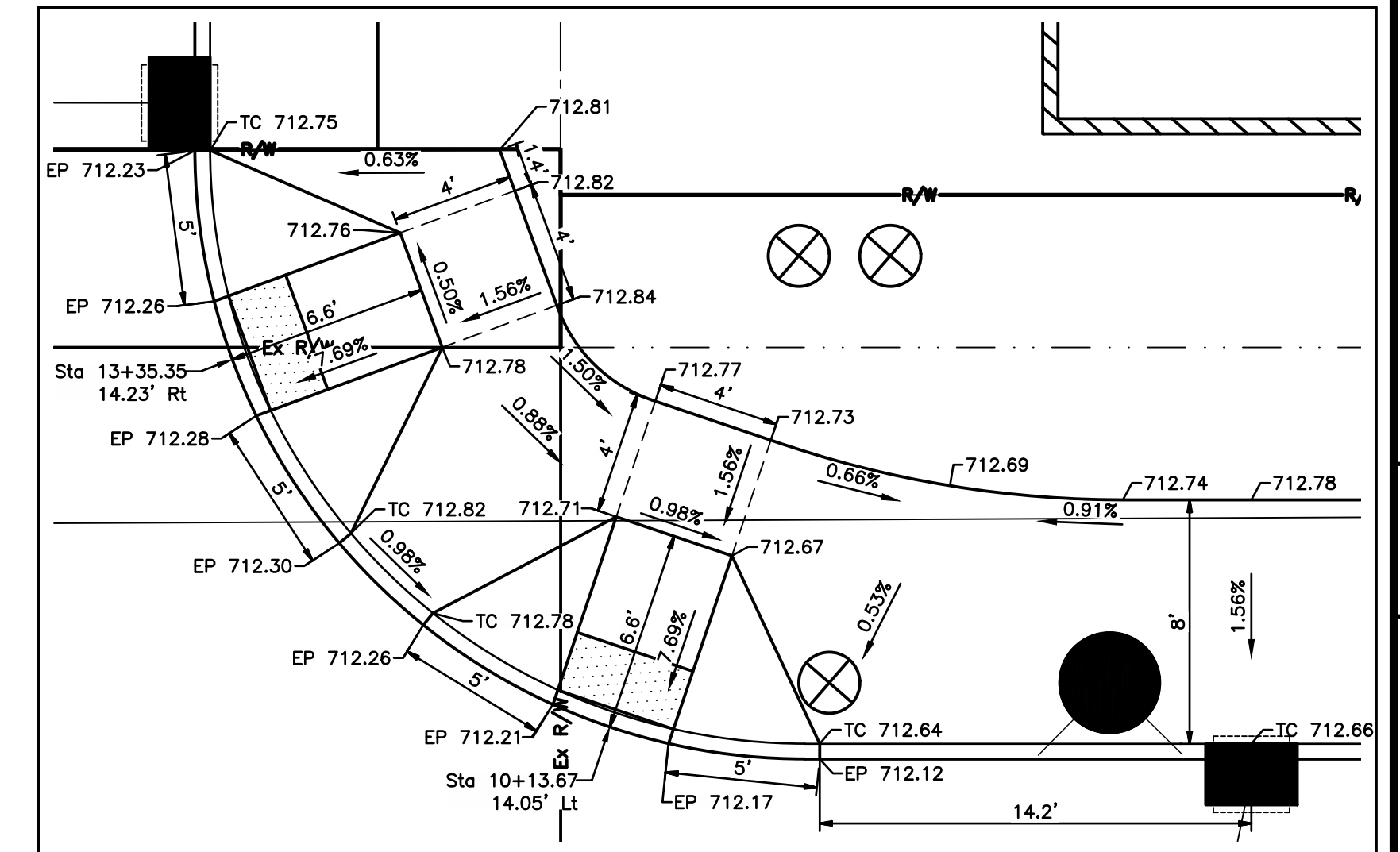


1 2 CURB RAMP DETAIL
 Scale: 1" = 5'



INTERSECTION DETAIL AT A AVENUE & B STREET
 Scale: 1" = 10'

DESIGNER NOTE:
 NORTH ARROW SHALL ALWAYS BE UP UNLESS THE CITY PROJECT MANAGER GRANTS A WRITTEN VARIANCE.

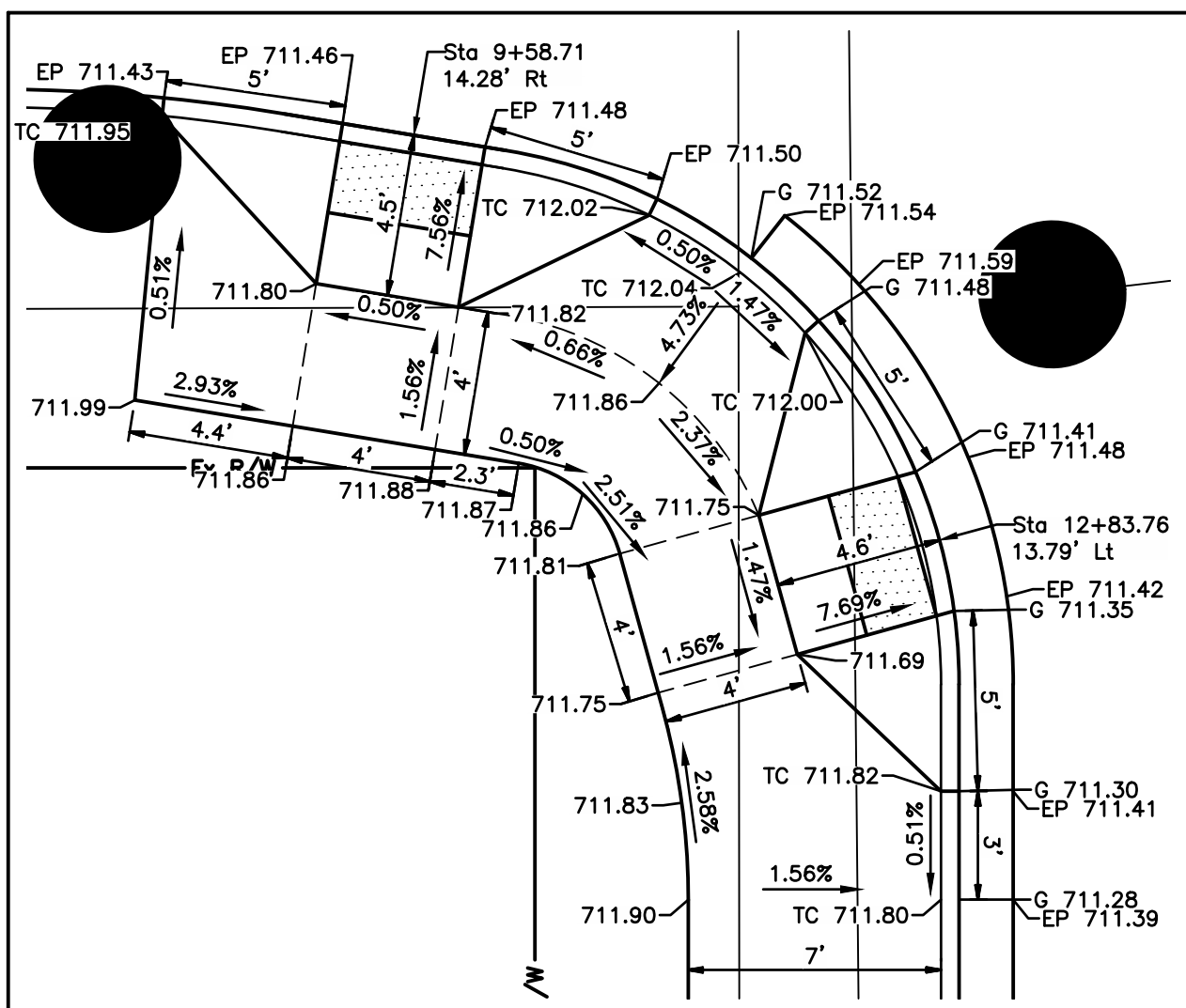


3 4 CURB RAMP DETAIL
 Scale: 1" = 5'

DESIGNER NOTE:
 PAR ROUTE SHALL BE ADEQUATELY DETAILED ON THESE SHEETS. THE DESIGNER MAY EMPLOY THE USE OF DASHED LINES TO ASSIST IN DELINEATING THE PAR WHEN IT DIFFERENTIATES FROM THE TYPICAL SECTION.

DESIGNER NOTE:
 ALL GRADE BREAKS SHALL BE NOTED. FOR THE PAR ROUTE, THE DESIGNER SHOULD INDICATE ALL PAR LOCATIONS UNTIL THE PAR COMPLIES WITH THE TYPICAL SECTION.

DESIGNER NOTE:
 THE CENTERLINE OF RAMP SHALL BE SET WITH STATIONS AND OFFSETS. THE STATION AND OFFSET LABEL SHALL BE PLACED AT THE LOCATION WHERE THE RAMP CENTERLINE AND THE FACE OF CURB LINE INTERSECT. THE STATION AND OFFSET LABEL SHALL BE CALCULATED FROM THE ADJACENT ROAD CENTERLINE.



7 8 CURB RAMP DETAIL
 Scale: 1" = 5'

DESIGNER NOTE:
 INTERSECTION DETAIL TO BE AT A 1"=10' SCALE UNLESS THE CITY PROJECT MANAGER GRANTS A WRITTEN VARIANCE. CURB RAMP DETAILS TO BE AT A 1"=5' SCALE.

DESIGNER NOTE:
 THE DESIGNER SHALL ENSURE THAT THE PAVEMENT OR GUTTER AT THE FACE OF CURB AT CURB RAMPS POSITIVELY FLOWS PAST CURB RAMP WHERE INTENDED. REFERENCE CURB AND GUTTER STANDARD DRAWING FOR GUTTER SLOPE TRANSITIONS AT CURB RAMPS. SLOPES AT THE FACE OF CURB SHALL NOT BE LESS THAN 0.50%.

DESIGNER NOTE:
 ELEVATIONS ALONG CENTERLINE ARE TO BE SHOWN EVERY 25' UNLESS NOTED OTHERWISE.

INTERSECTION DETAIL NOTES

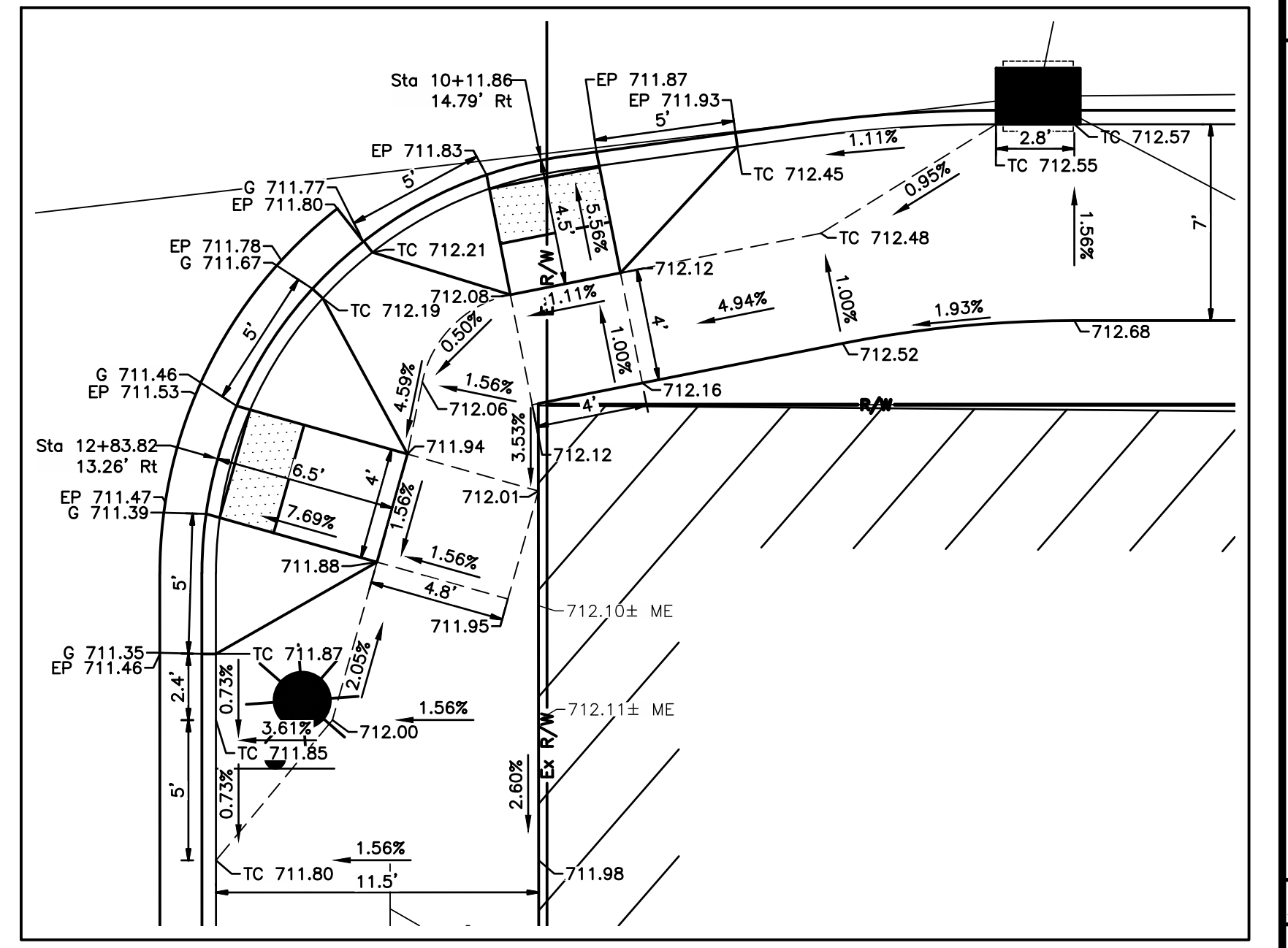
The Top of Curb is 0.52' above the Edge of Pavement.

Elevations to the Top of Curb in curbed areas and to the edge of pavement in pavement areas.

The curve data is calculated at the face of curb.

Reference cross sections for sidewalk grading details.

- LEGEND**
- XXX.XX Proposed Elevations
 - XXX.XX± Existing Elevations
 - TC = Top of Curb/Top of Casting
 - TDC = Top of Dropped Curb
 - FC = Face of Curb
 - EP = Edge of Pavement
 - ME = Match Existing
 - GB = Grade Break
 - LP = Low Point
 - FW = Face of Wall
 - ① Curb Ramp Number
 - Ⓐ Curve Data, See Table This Sheet
 - ▨ Detectable Warning



5 6 CURB RAMP DETAIL
 Scale: 1" = 5'



AS NOTED

CALCULATED XX
 CHECKED XX

INTERSECTION DETAILS
 AVENUE A AT STREET B

IMPROVEMENTS OF ...
 STREET A FROM STREET B TO STREET C

XXXX-E

XX
 XXX