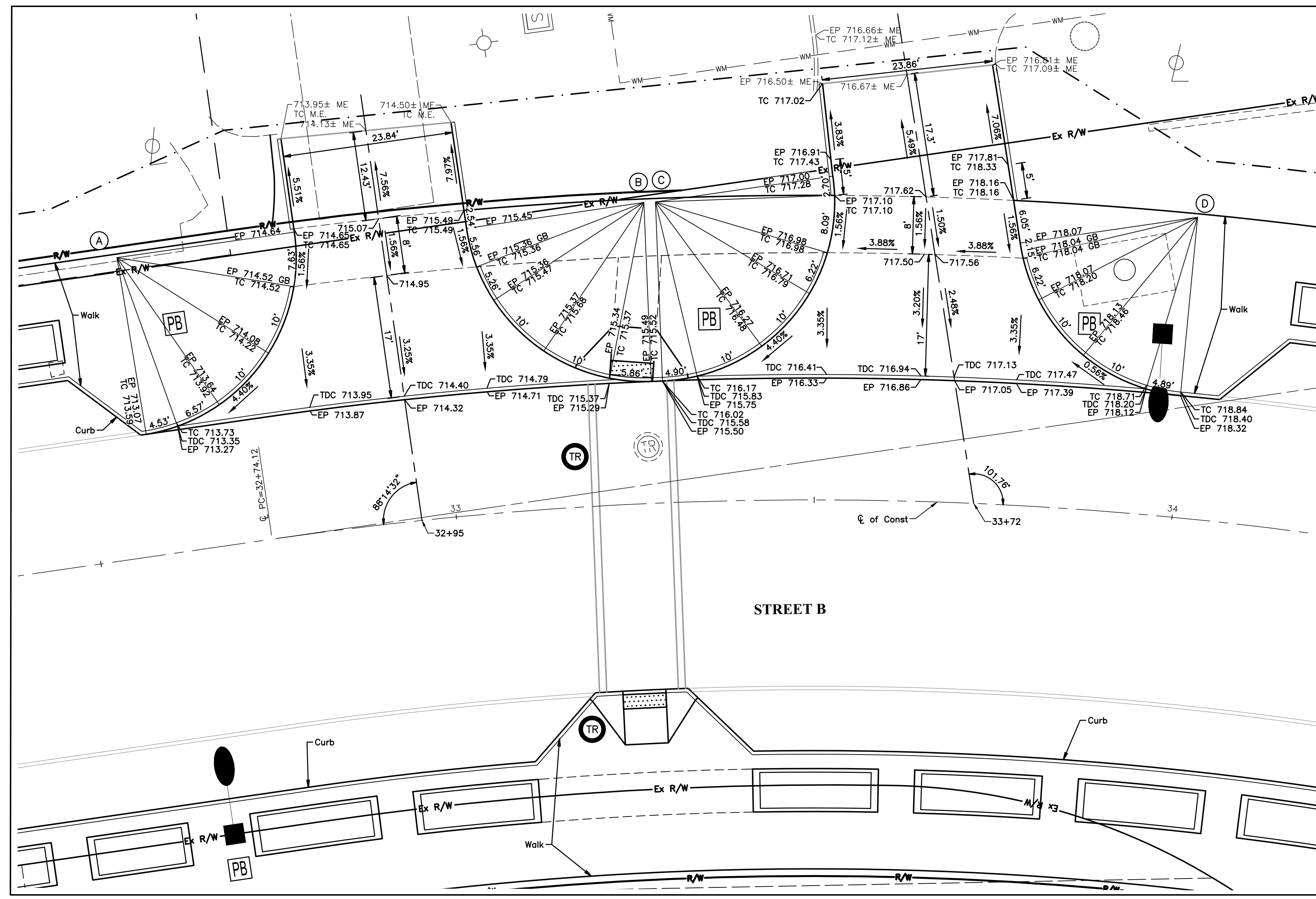
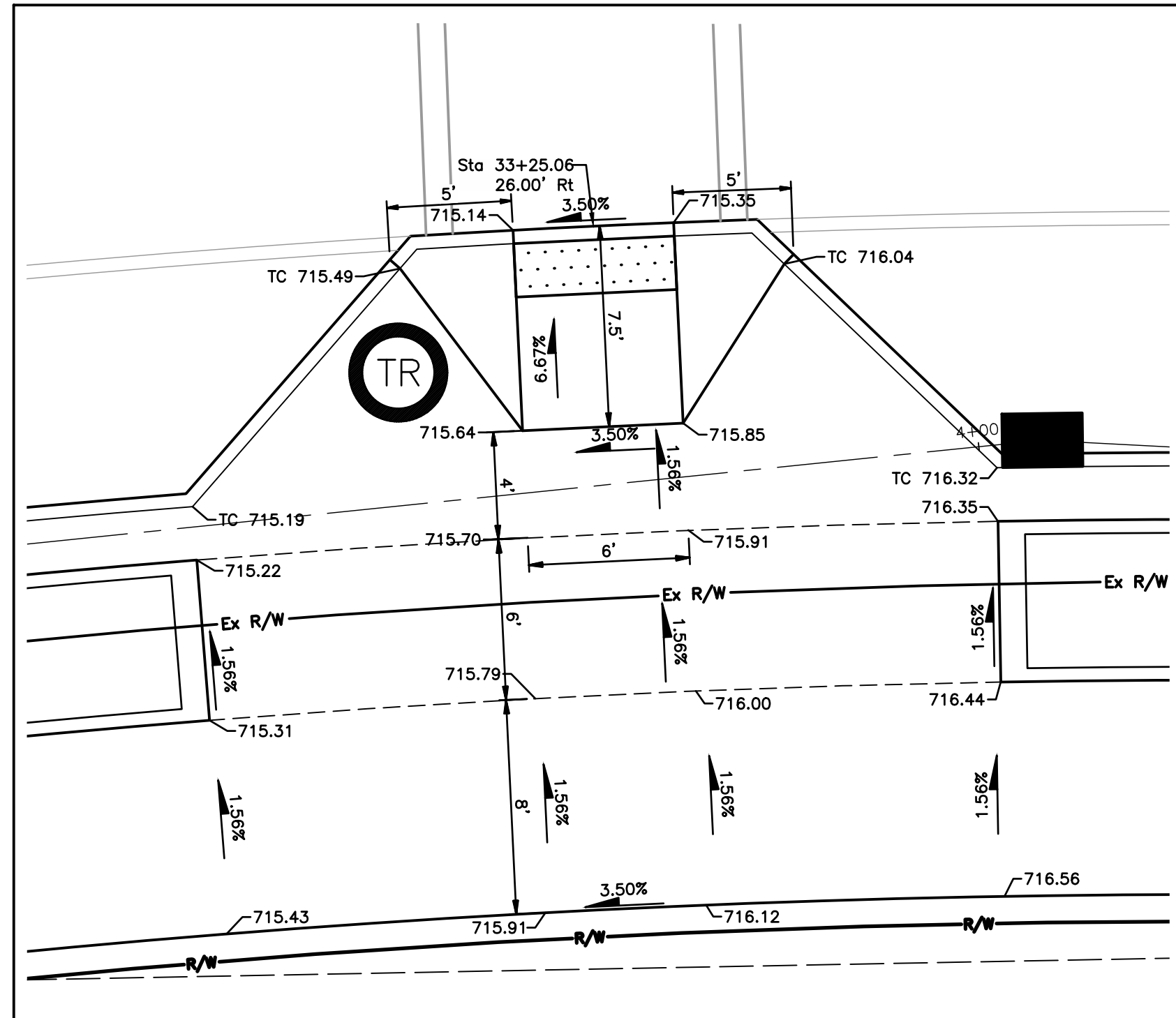


DESIGNER NOTE:
 INTERSECTION DETAILS SHOULD ONLY SHOW PROPOSED AND EXISTING SURFACE FEATURES THAT ARE TO BE PRESENT AT THE COMPLETION OF THE PROJECT. DO NOT SHOW ITEMS THAT ARE TO BE REMOVED BY THE PROJECT. UNDERGROUND FACILITIES ARE ALSO NOT TO BE SHOWN.



RAMP AND DRIVE DETAILS AT STREET B

SCALE: 1" = 10'



2 CURB RAMP DETAIL

SCALE: 1" = 5'

CURVE DATA									
	DELTA	RADIUS	TANGENT	LENGTH	EXTERNAL	MIDDLE	FILLET AREA	CHORD DISTANCE	RADIUS POINT
A	88°45'46"	25.00'	24.47'	38.73'	9.98'	7.13'	128	34.97'	12+58.32, 41.99' Lt.
B	84°03'52"	25.00'	22.54'	36.68'	8.66'	6.43'	105	33.48'	13+27.99, 42.00' Lt.
C	96°03'02"	25.00'	27.79'	41.91'	12.38'	8.28'	171	37.17'	13+29.49, 42.00' Lt.
D	76°13'35"	25.00'	19.61'	33.26'	6.77'	5.33'	75	30.86'	13+99.56, 42.00' Lt.

INTERSECTION DETAIL NOTES

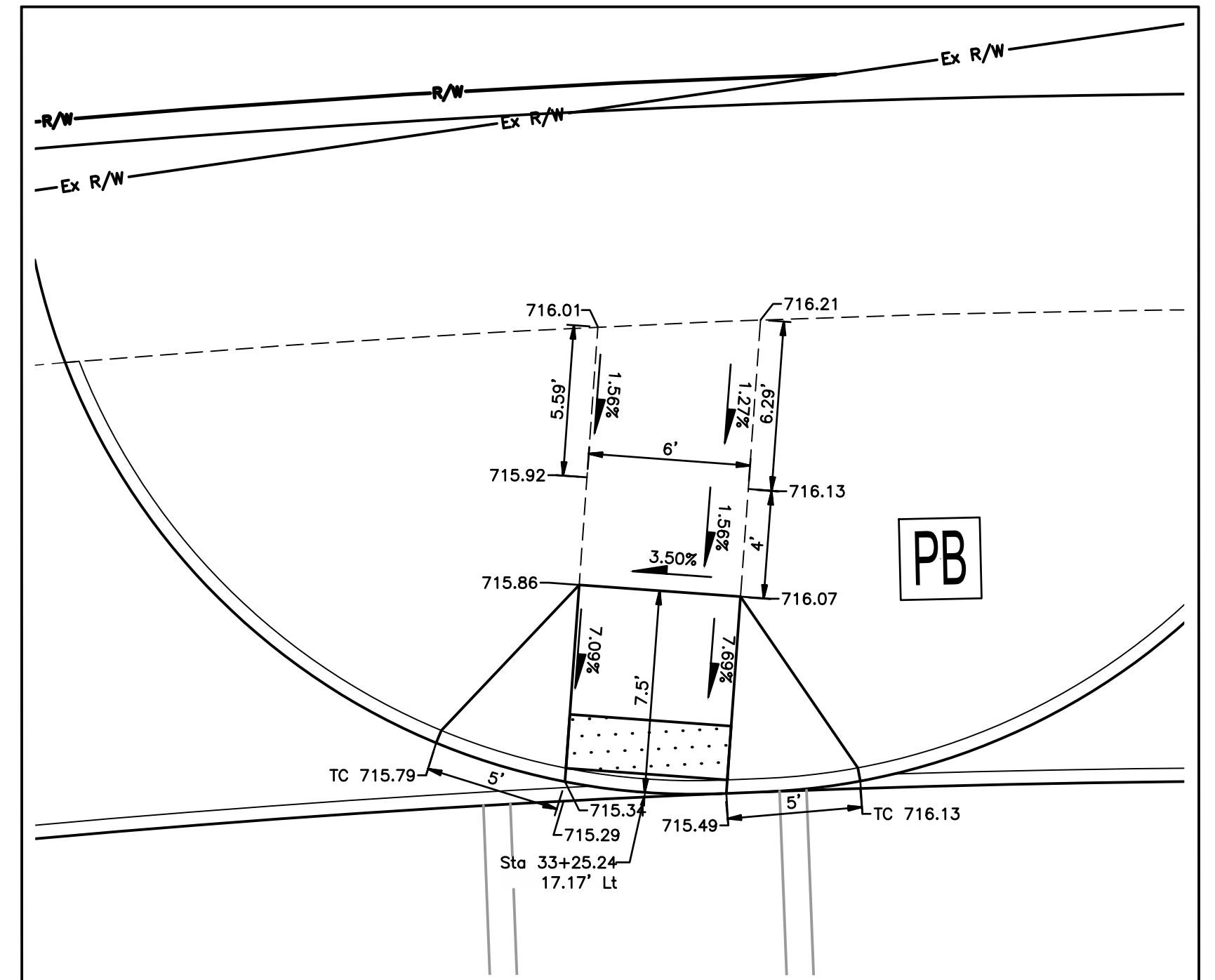
The Top of Curb is 0.52' above the Edge of Pavement.

Elevations to the Top of Curb in curbed areas and to the edge of pavement in pavement areas.

The curve data is calculated at the face of curb.

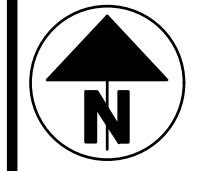
Reference cross sections for sidewalk grading details.

- LEGEND**
- XXX.XX Proposed Elevations
 - XXX.XX± Existing Elevations
 - TC = Top of Curb/Top of Casting
 - TDC = Top of Dropped Curb
 - FC = Face of Curb
 - EP = Edge of Pavement
 - ME = Match Existing
 - GB = Grade Break
 - LP = Low Point
 - FW = Face of Wall
 - ① Curb Ramp Number
 - Ⓐ Curve Data, See Table This Sheet
 - ▨ Detectable Warning



1 CURB RAMP DETAIL

SCALE: 1" = 5'



As Noted

SCALE
 CALCULATED XX
 CHECKED XX

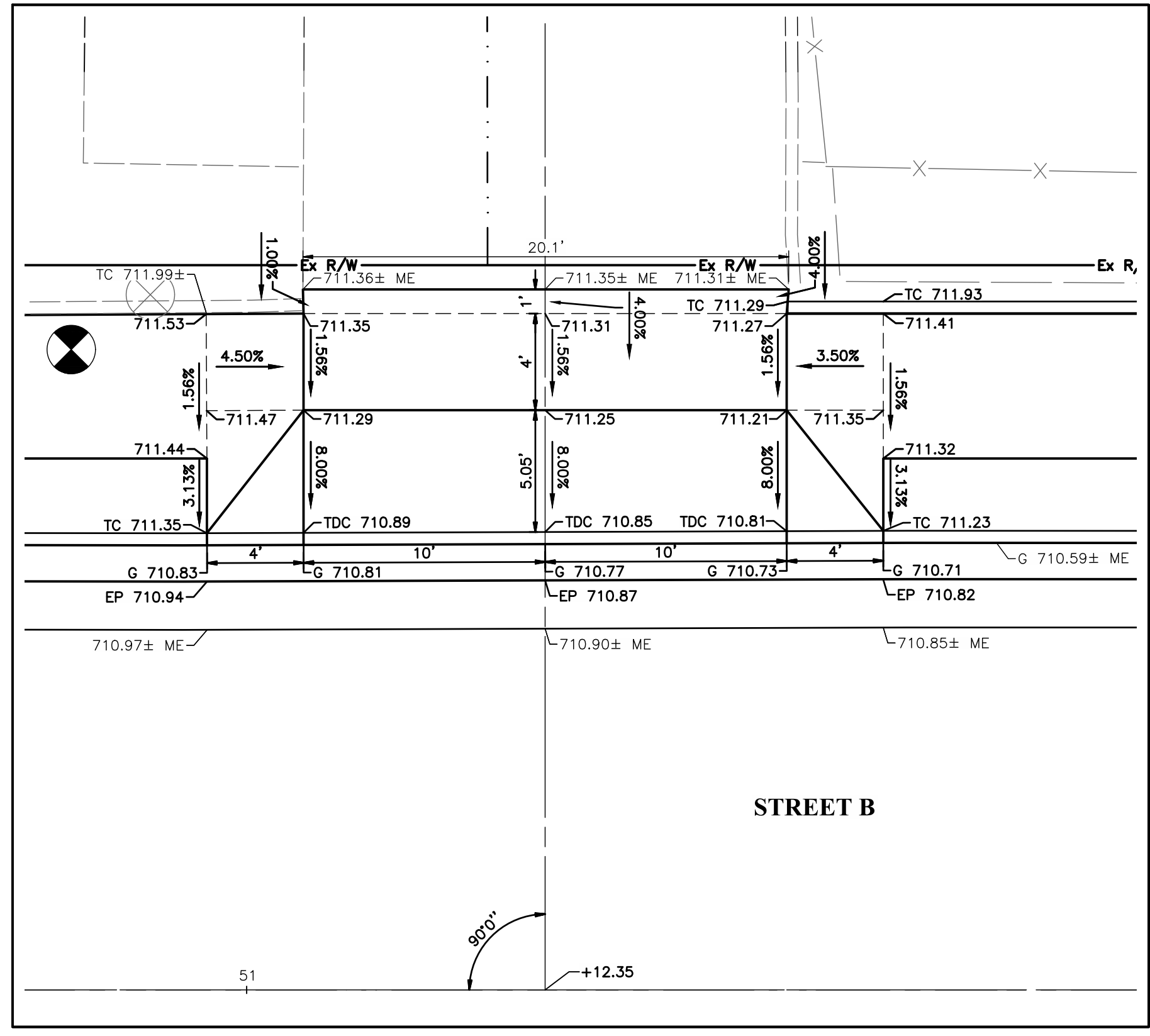
DRIVE DETAILS AND CURB RAMP DETAILS
 STREET B

IMPROVEMENTS OF ...
 STREET A FROM STREET B TO STREET C

XXXX-E

XX
 XXX

DESIGNER NOTE:
 INTERSECTION DETAILS SHOULD ONLY SHOW PROPOSED AND EXISTING SURFACE FEATURES THAT ARE TO BE PRESENT AT THE COMPLETION OF THE PROJECT. DO NOT SHOW ITEMS THAT ARE TO BE REMOVED BY THE PROJECT. UNDERGROUND FACILITIES ARE ALSO NOT TO BE SHOWN.



DRIVE DETAIL @ STREET B 51+12.35 LT
 Scale: 1" = 5'

INTERSECTION DETAIL NOTES

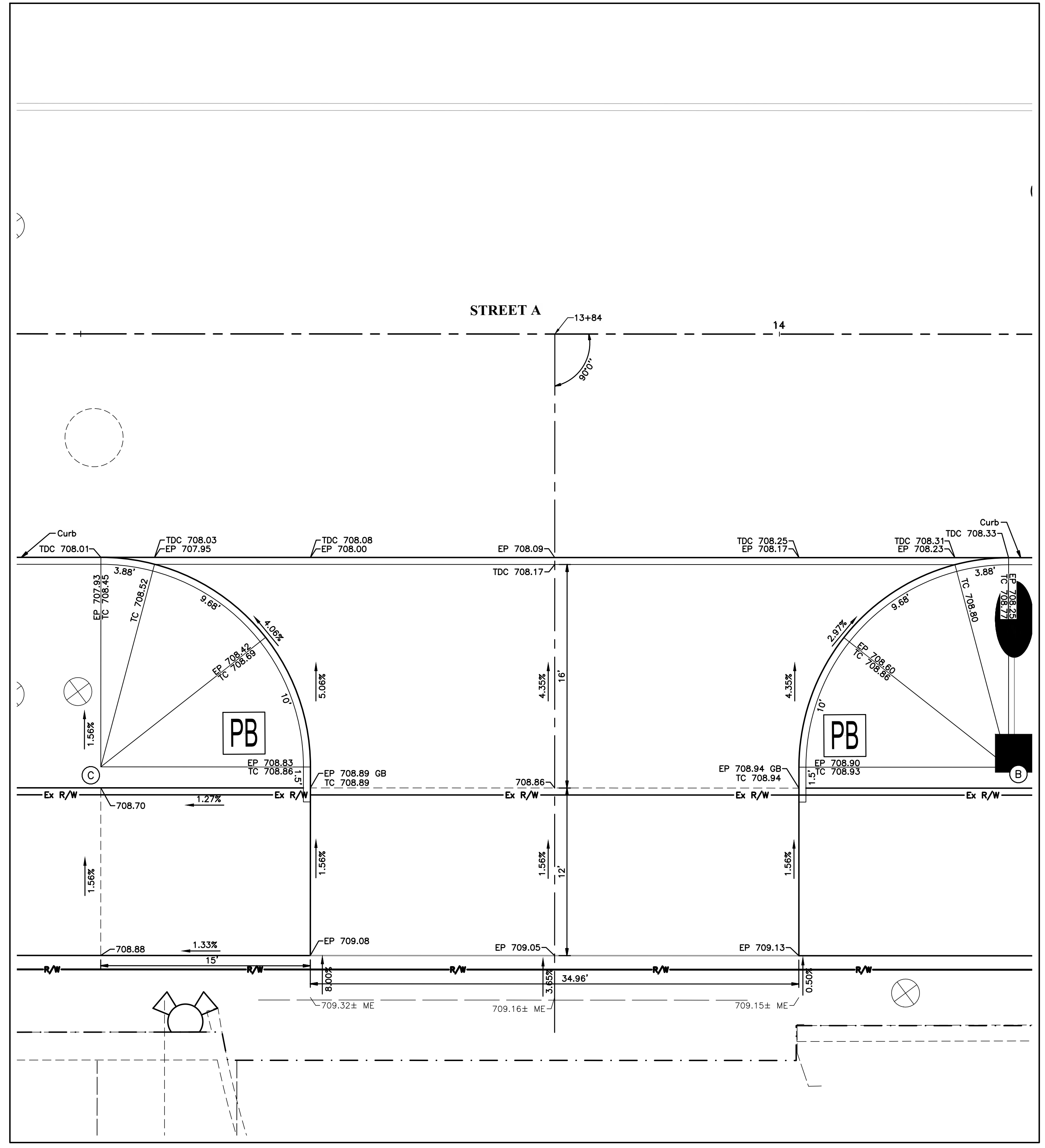
The Top of Curb is 0.52' above the Edge of Pavement.

Elevations to the Top of Curb in curbed areas and to the edge of pavement in pavement areas.

The curve data is calculated at the face of curb.

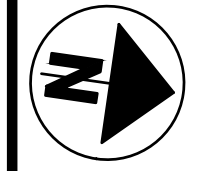
Reference cross sections for sidewalk grading details.

- LEGEND**
- xxx.xx Proposed Elevations
 - xxx.xx± Existing Elevations
 - TC = Top of Curb/Top of Casting
 - TDC = Top of Dropped Curb
 - FC = Face of Curb
 - EP = Edge of Pavement
 - ME = Match Existing
 - GB = Grade Break
 - LP = Low Point
 - FW = Face of Wall
 - ① Curb Ramp Number
 - Ⓐ Curve Data, See Table This Sheet
 - ⋯ Detectable Warning



DRIVE DETAIL AT STREET A 13+80.23 RT
 SCALE: 1" = 5'

CURVE DATA									
	DELTA	RADIUS	TANGENT	LENGTH	EXTERNAL	MIDDLE	FILLET AREA	CHORD DISTANCE	RADIUS POINT
B	89°59'33"	15.00'	15.00'	23.56'	6.21'	4.39'	48	21.21'	14+16.41, 31.00' Rt.
C	89°59'33"	15.00'	15.00'	23.56'	6.21'	4.39'	48	21.21'	13+51.45, 31.00' Rt.



SCALE
 CALCULATED XX
 CHECKED XX
 As Noted

DRIVE DETAILS - STREET A & STREET B

IMPROVEMENTS OF ...
 STREET A FROM STREET B TO STREET C

XXXX-E

