

## Highlights

- This will be the final local influenza surveillance weekly summary for the 2019-20 season.
- The COVID-19 pandemic may affect healthcare seeking behavior which in turn would impact certain flu surveillance data.
- **With the decline in influenza lab positives and confirmed influenza associated hospitalizations to at or below baseline levels, flu activity currently appears low.** Please see the individual indicators below.
- Local medical facility labs reported 318 tests run with 4 (1.3%) positive results for week 20 of 2020.
- The percentage of ED visits for influenza-like-illness (ILI) was stable while respiratory symptom visits decreased compared to last week.
- In week 20 of 2020, the trends for individual local over-the-counter medication category sales tracked were mixed (decrease in cough and cold, electrolyte, pediatric anti-fever, adult anti-fever, and throat lozenge sales; increase thermometer sales; stable pediatric chest rub sales) compared to last week.
- In week 20, National flu activity remains low. Please [visit the CDC website for specific information.](#)

## Local Flu Activity Dashboard *(All data are preliminary and may change as updated reports are received.)*

### Current Week's Composite Intensity Indicator\*

### Composite Intensity Indicator\* Weekly Trend

Due to similarities of some of key indicators comprising the flu composite indicator to COVID-19 symptoms, the flu composite indicator is temporarily unavailable. Recent changes in health care seeking behavior due to COVID-19 concerns are likely impacting data, specially indicators that are flu-like. Please see the individual indicators below.

**NOTE:** Please see the divergence between indicators specific to both flu lab positives and confirmed influenza associated hospitalizations and those indicators based on symptoms/syndromes and sales in early-mid March. **With the decline in influenza lab positives and confirmed influenza associated hospitalizations to at or below baseline levels, flu activity currently appears low.**

Indicators	Week Number(s) Available	Current Week Value	% Change Chart from Last Week <sup>1</sup> (-)   (+)	# Weeks <sup>2</sup> ▲ • ▼	General Trend Line Chart <sup>3</sup> (black = current, red = historical avg.)
Medical Facility Lab Data	35-20	1.3% Pos.	-66%	1 ▼	
athenaHealth® <sup>4</sup> Network PCP Flu or ILI Visit (Ohio)		Note: Update not available at time of this report			
EMS Cold/Flu Symptom Runs	35-20	15 runs	-6.3%	2 ▼	
School Absences		Note: Update not available at time of this report			
Hospital ED Data <sup>5</sup> :					
Complaint Defined as ILI	35-20	19.1% of All ED Visits	0.3%	1 •	
Categorized as Respiratory	35-20	13.7% of All ED Visits	-4.8%	2 ▼	
Medication Data:					
OTC Cough & Cold Sales	35-20	10,136 Total Sales	-11.3%	1 ▼	
Thermometer	35-20	232 Total Sales	>100%	2 ▲	
Confirmed Influenza Associated Hospitalizations <sup>6</sup>	35-20	0 Admitted (863 Since wk. 35, 2019)	0%	2 •	

Reportable Conditions (Cumulative Numbers as of May 17, 2020)	2015	2016	2017	2018	2019	2020 YTD
Pediatric Influenza Associated Death Reported by Year (based on date of death)	0	0	0	0	1	0
Influenza Associated Hospitalizations (IAH) Reported by Admission Year <sup>6</sup>	447	293	846	1,036	839	728
IAH comparison by Flu Season (October through May or Weeks 35 - 20)	<b>2014-15</b>	<b>2015-16</b>	<b>2016-17</b>	<b>2017-18</b>	<b>2018-19</b>	<b>2019-20*</b>
*Current season figures (2019-20) are from week 35 through week 20 of 2020.	871	265	619	1,235	746	863

<sup>1</sup>Interpret with caution. Indicators with small numbers subject to large weekly percentage fluctuations.

<sup>2</sup>Number of weeks "▲" = Increase (>2%), "▼" = Decrease (>2%), "•" = Stable (-2% to +2%).

<sup>3</sup>Black line is current years data. Based on data availability, red line is historical average (excluding pandemic year).

<sup>4</sup>Data Source: Medical claims data from athenaHealth® (www.athenahealth.com). Rate of Flu or ILI visits to Ohio (statewide) athenaHealth® network primary care practices/physicians. Claims data are subject to filing and processing time lags. Historical data are updated when they are received.

<sup>5</sup>Franklin County, OH residents only (based on zipcode). NOTE: Excludes one hospital system included in the past due to technical changes affecting visit classification assignment and numbers.

<sup>6</sup>Confirmed cases only. Based on jurisdiction equal to Franklin County or City of Columbus and admission date available in ODRS.

## **Influenza Morbidity and Influenza-Like Illness (ILI) Reports**

Updated statewide influenza and influenza-like-illness (ILI) visit data from athenaHealth® was not available at the time of this report. The week 20 percentage of all Emergency Department (ED) visits categorized as ILI was stable compared to the previous week (Figure 3) and is above its historic baseline for the week.

Nationally, during week 20 of 2020, 1.2% of patient visits reported through ILINet were due to influenza-like illness (ILI) and is below the national baseline of 2.4% for week 20.

## **Laboratory Surveillance**

During week 20 of 2020, reporting Franklin County sentinel medical facility laboratories tested 318 specimens, with 4 (1.3%) positive (Figure 4). The total number of tests done by local reporting labs from week 35 of 2019 through week 20 of 2020 is 65,688 with 12,463 (19.0%) positives (5,363, type A, 6,756 type B, 0 type A and B, 344 type unknown).

Nationally in week 20 of 2020, clinical laboratories reported 6,007 specimens tested for influenza viruses, 16 (0.3%) of which were positive (9 type A, 7 type B). In week 20, public health laboratories reported testing 233 specimens, 25 of which were positive (24 type A – of which 24 were A(H1N1)pdm09, 0 were H3N2, and 0 were not subtyped; 1 type B – lineage was not performed. Please visit the CDC website for more information, including cumulative data.

In week 20 of 2020, Ohio clinical labs reported 103,267 specimens tested for influenza this season thus far. Positive results include: (732) A(H1N1)pdm09; (7) A/H3N2; (10,962) Flu A Not Subtyped, and (10,041) Flu B (through 5/16/2020). In week 20 of 2020, ODH Public Health Lab reported 1,034 positive influenza tests from various submitters this season so far. Positive results include: (627) A(H1N1)pdm09; (17) A/H3N2; (390) Influenza B (through 5/16/2020). Please visit the ODH website for more information.

## **ED Respiratory Visits**

In the 20<sup>th</sup> week of 2020, the percentage of all ED visits categorized as respiratory decreased compared to the percentage seen the previous week and is above its baseline for the week (Figure 5).

## **Over-the-Counter (OTC) Medication Sales**

In week 20 of 2020, the trends for individual local over-the-counter medication category sales tracked were mixed (decrease in cough and cold, electrolyte, pediatric anti-fever, adult anti-fever, and throat lozenge sales; increase thermometer sales; stable pediatric chest rub sales) compared to last week.

## **Additional Influenza Activity Web Links:**

Ohio Seasonal Flu Surveillance: <https://odh.ohio.gov>

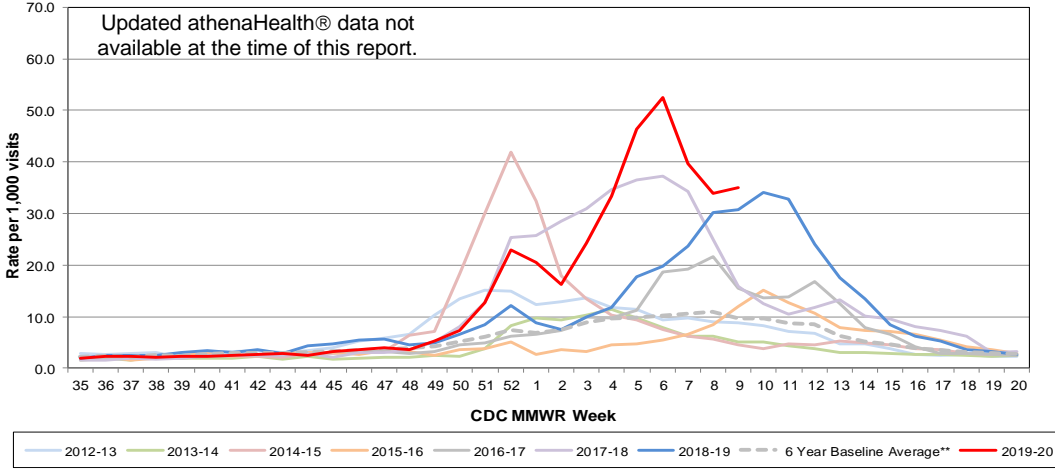
CDC National Seasonal Flu Surveillance Reports: <http://www.cdc.gov/flu/weekly/>

World Health Organization Situation Updates: [http://www.who.int/influenza/surveillance\\_monitoring/en/](http://www.who.int/influenza/surveillance_monitoring/en/)

<sup>1</sup>Note: County level athenaHealth® network primary care medical claims data is no longer available.

# Columbus & Franklin County Influenza Monitoring Summary – Week 20, 2020 (5/10/2020-5/17/2020)

**Figure 1: Ohio Outpatient Primary Care Provider Influenza or Influenza-Like-Illness Visit Rate\***

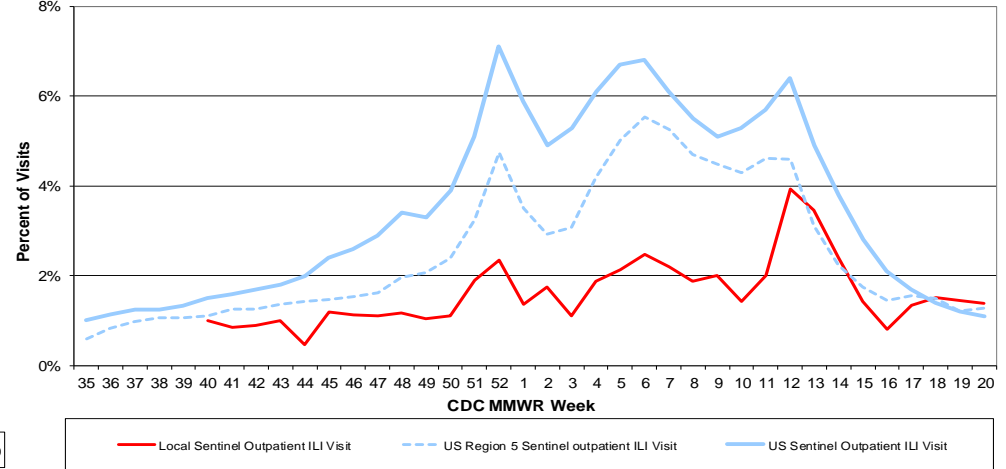


\*Source: Ohio (Statewide) medical claims data from athenaHealth®

\*\*Seasons: 2010-11, 2011-12, 2012-13, 2013-14, 2015-16, 2016-17

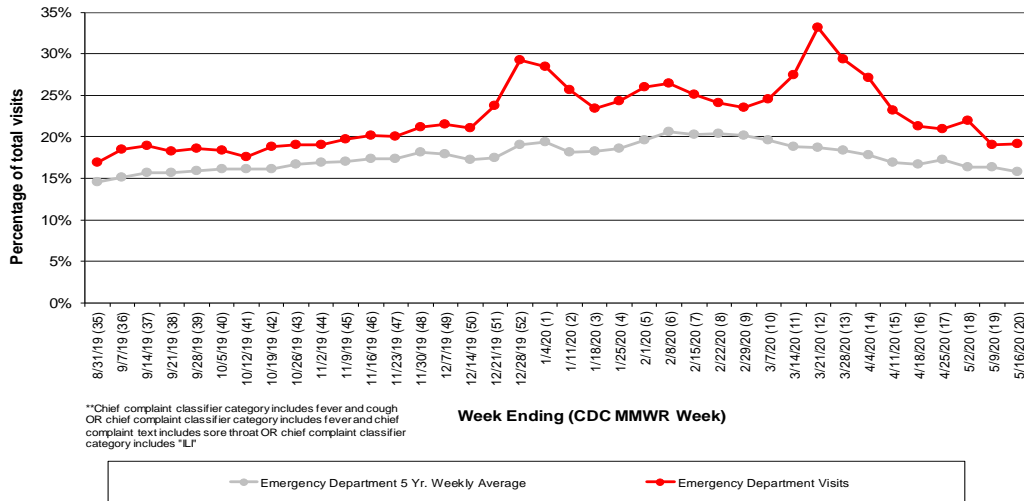
Note: athenaHealth® claims data are subject to filing and processing time lags. Historical data are updated when they are received.

**Figure 2: Percentage of CDC National, Regional, and Local Outpatient Sentinel Health Care Provider\* Site visits for ILI, 2019-20**



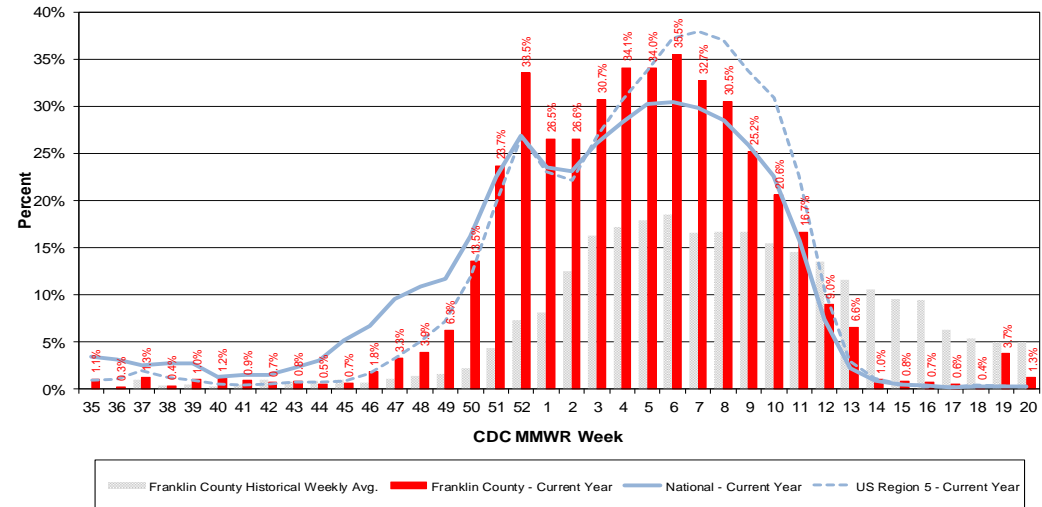
\*Source: U.S. Outpatient Influenza-like Illness Surveillance Network (ILINet) sentinel provider visits.

**Figure 3: Franklin County Resident ILI Defined\*\* ED Visits, 2019-20, Franklin County, OH**



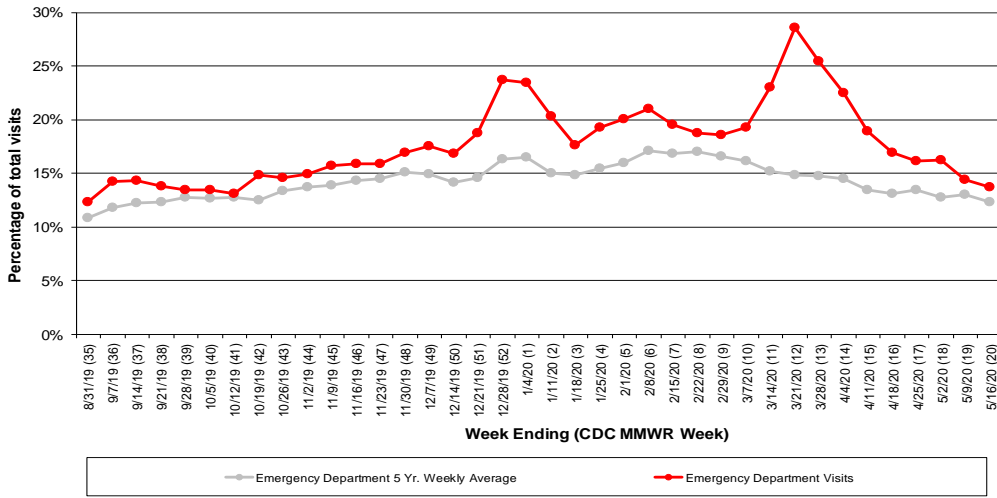
\*\*Chief complaint classifier category includes fever and cough OR chief complaint classifier category includes fever and chief complaint text includes sore throat OR chief complaint classifier category includes "LI"

**Figure 4: Percentage of Local Reporting and National Laboratory Positive Influenza Tests by Week, 2019-20**

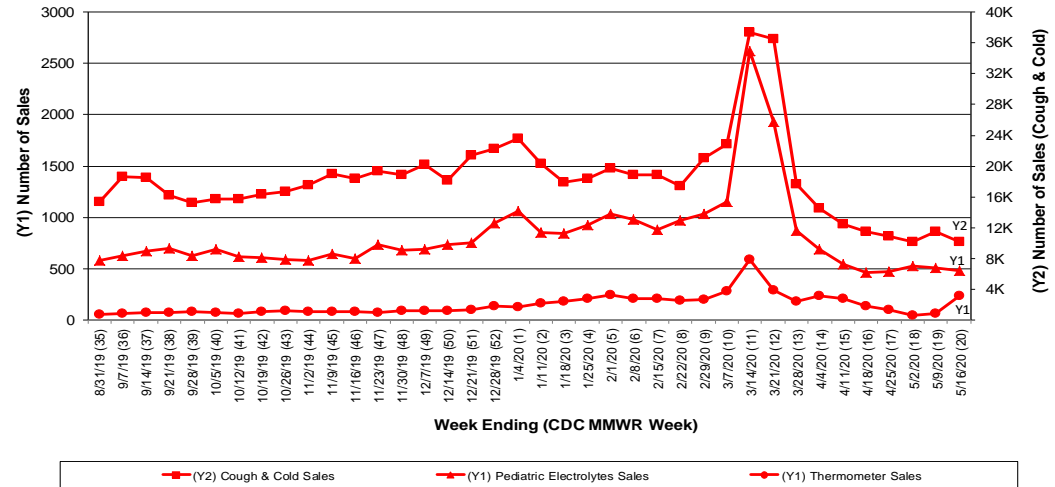


## Columbus & Franklin County Influenza Monitoring Summary – Week 20, 2020 (5/10/2020-5/17/2020)

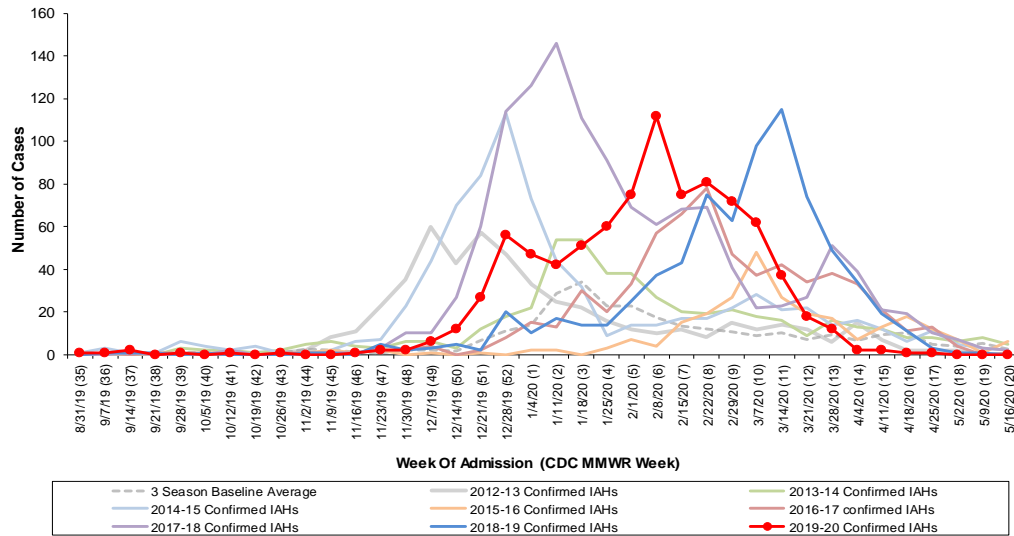
**Figure 5: Franklin County Resident Respiratory ED Visits, 2019-20, Franklin County, OH**



**Figure 6: Selected Number of Over-the-Counter Medication Total Sales, 2019-20, Franklin County, OH**



**Figure 7: Columbus and Franklin County Jurisdiction Confirmed Influenza Associated Hospitalizations by Hospital Admission Week (As of 5/17/2020)**



**Columbus and Franklin County, OH Jurisdiction Confirmed Influenza Hospitalization Cumulative Rates (per 100,000) by Age-Group and Admission Week, 2019-2020 Season**

