

## STEEL POLE 35' V WITH 6' BRACKET

### I. Quantity

The base bid shall include the indicated number of steel poles furnished and erected, as hereinafter specified and located as shown on the drawings.

### II. Material

The steel poles shall be as follows:

The street light pole shaft shall be one piece to the maximum height of 35'.

All steel material shall conform to the chemical and mechanical properties as tested in accordance with the ASTM (or equivalent) specifications.

The pole shall be circular in cross section with constant taper. Top diameter of pole to be 5.25", bottom diameter of pole to be 11.06".

Drilling and punching of holes, shall be done before galvanizing in such manner as to produce cylindrical holes normal to the plane of the material. The hole shall not be out of round, or taper from top to bottom more than 1/16 inch. The punches and dies shall be maintained in such condition as to produce clean, round holes free from burrs, folds, depressed or upset edges. Slotting of mispunched or drilled holes will not be permitted. The threaded inserts shall be preinstalled.

Drilling requirements for crossarms and other attachments will have dimensions and tolerances listed and included in Drawing #01S0121.

Poles shall be marked and identified (i.e. length, class, manufacturer and date of manufacture) in a format agreeable to both the manufacturer and owner. Poles shall be furnished with base plates and top caps, preinstalled. A three foot (3') section of ground line corrosion protection shall be preinstalled.

Galvanizing shall be performed in accordance with the AGA "Quality Control Manual" and shall meet the requirements of ASTM 4123, 4143, and A153. Galvanizing shall have a brush blast finish.

The pole shall be IUSI (International Utility Structure).

6/99

MIS-146

The 6' bracket shall be tapered aluminum tube HAPCO 6063-T6 with 2" NPS splitfitter. Item number is HAPCO A78122 with A78280 as pole plate assembly.

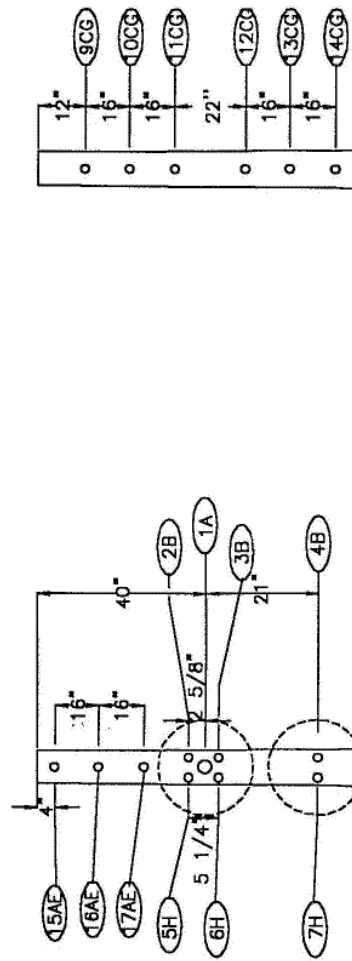
### III. Installation

- a. A hole to receive the pole shall be prepared to the depth indicated on Division of Electricity Drawing 01S0121 attached hereto. Concrete sidewalks shall be saw cut.
- b. The pole shall be set in the hole and held straight and true.
- c. The hole shall be backfilled in six inch layers and firmly tamped, using powered tamper.
- d. The excess earth and materials shall be disposed of by the contractor as specified in Item 203.05 of the City of Columbus Construction and Materials Specifications.
- e. If the pole is set in a concrete sidewalk the section of the sidewalk shall be replaced in accordance with Item 608.
- f. If the pole is set in a brick sidewalk or other paved area, the surface shall be restored with similar materials, as shown on the plans and as directed by the engineer.
- g. The location of the poles shall be as shown on the drawings and as located in the field by the engineer.

### IV. Quotation

The steel poles as hereinbefore specified shall be quoted on as a unit price each in the appropriate place in this document.

TOP CAP

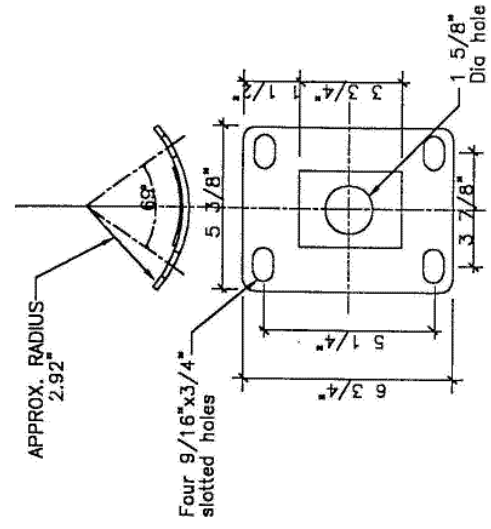


POLE ID AT 10% PLUS 7 FT. FROM BUTT  
 --HEIGHT/CLASS e.g. 35/5  
 --MANUFACTURER e.g. JUSU  
 --DATE OF MFG. e.g. 11/85  
 --PLANT LOCATION e.g. CROWSNEST  
 --OWNER e.g. MELP

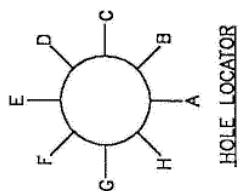
DRILLING SUMMARY

HOLE	DRILL	BOLT
1A	1 1/4"	NONE
2B	11/16"	1/2" BOLT
3B	11/16"	1/2" BOLT
4B	7/16"	3/8" BOLT
5H	11/16"	1/2" BOLT
6H	11/16"	1/2" BOLT
7H	7/16"	3/8" BOLT
8CG	1 1/4"	NONE
9CG	11/16"	(SECONDARY RACK)
10CG	11/16"	(SECONDARY RACK)
11CG	11/16"	(SECONDARY RACK)
12CG	11/16"	(SECONDARY RACK)
13CG	11/16"	(SECONDARY RACK)
14CG	11/16"	(SECONDARY RACK)
15AE	11/16"	(SECONDARY RACK)
16AE	11/16"	(SECONDARY RACK)
17AE	11/16"	(SECONDARY RACK)

NOTE  
 FOR ACCURATE HOLE DRILLING  
 USE BRACKET MODEL SUPPLIED  
 BY THE MANUFACTURE.



BRACKET ATTACHMENT  
 PLATE



A FACE OF POLE

HOLE LOCATOR

C FACE OF POLE

BUTT CAP

REVISIONS

MELP MUNICIPAL ELECTRIC LIGHT & POWER SYSTEM  
 CITY OF COLUMBUS, OHIO  
 DEPT. OF UTILITIES - DIVISION OF ELECTRICITY

**STEEL DISTRIBUTION POLE  
 35'-V (6' BKT)**

SCALE	NONE	DRAWING NO.	10/97
C. O. NUMBER	APPROVED	DRAWING NO.	0150121
		SHEET	1 OF 1