







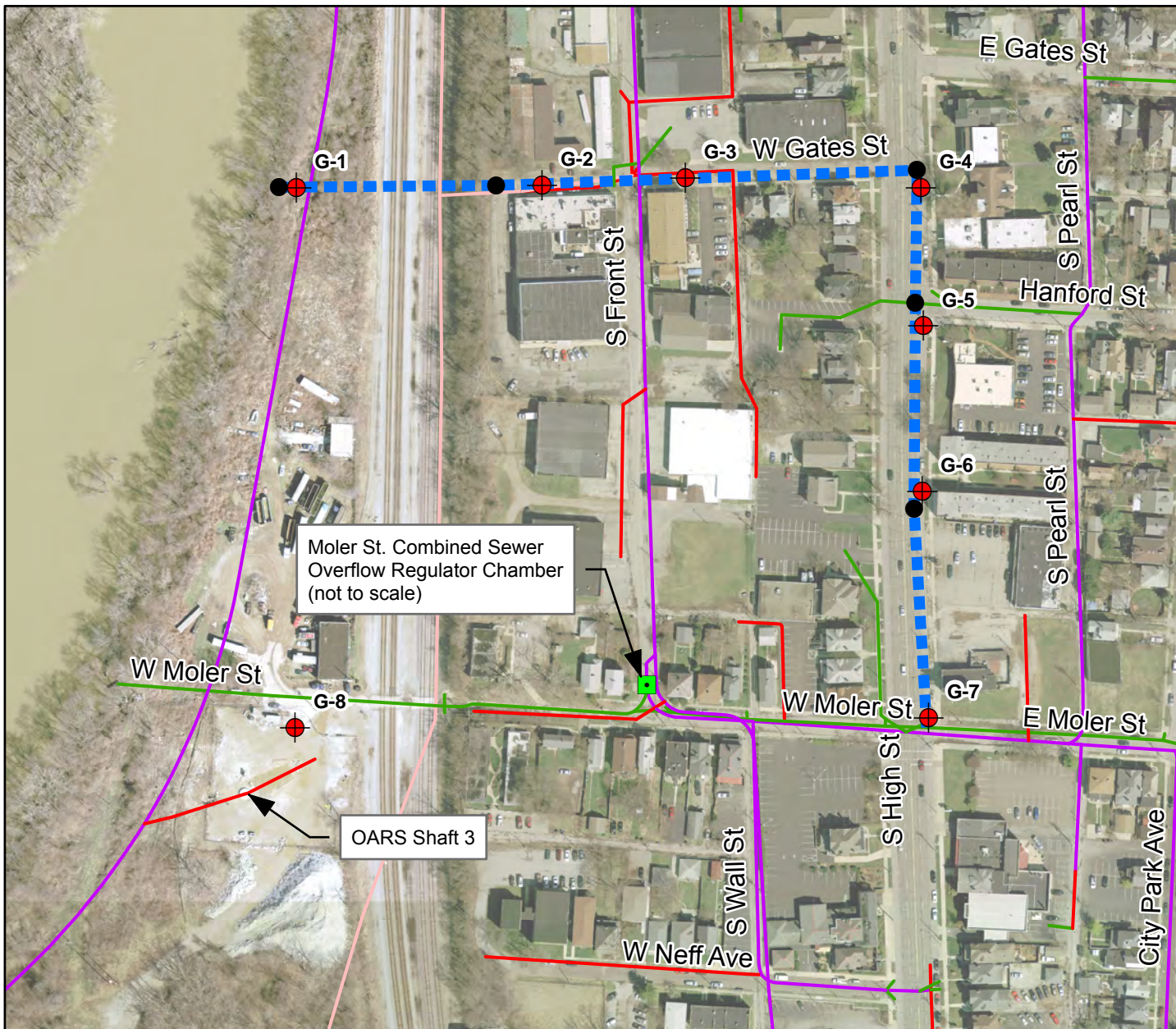




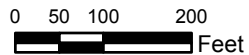
### Legend

-  Geotechnical Boring Location
-  Proposed Storm Manhole
-  Proposed Storm Sewer
-  Moler Street Regulator
-  Existing Sanitary Sewer
-  Existing Storm Sewer
-  Existing Combined Sewer
-  Abandoned Sanitary Sewer



PUBLIC RECORD INFRASTRUCTURE EXEMPTION: Pursuant to O.R.C. §149.433(A) (2) and O.R.C. §149.433(A) (3) (B), the data being provided is not considered a public record and is not to be redistributed. The information being provided is for construction purposes only. Any other use of this data is not permitted. This exemption applies to all images, drawings and maps, both hardcopy and in electronic form, as well as any associated electronic GIS/CAD data which shows the location of the utility's infrastructure assets.

GENERAL DISCLAIMER: Every reasonable effort has been made to ensure the accuracy of this information. The City of Columbus assumes no liability arising from use of this information. THIS INFORMATION IS PROVIDED WITHOUT WARRANTY OF ANY KIND, expressed or implied, including, but not limited to, the implied warranties of merchantability and fitness for a particular purpose.



## Moler Street Overflow Intercepting Sewer CIP 650763-100000

