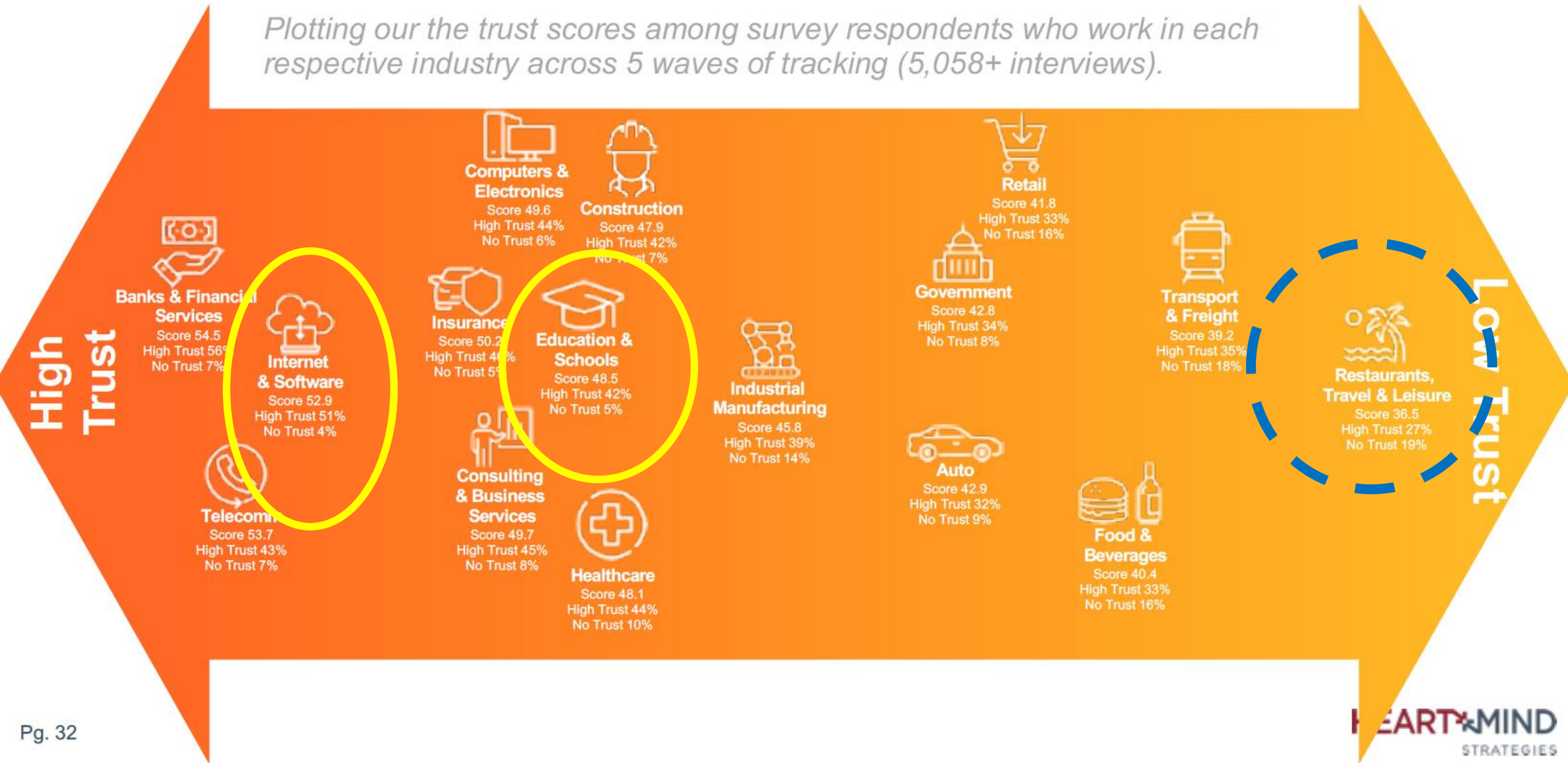


Recovery and Resiliency Committee Meeting

January 27, 2021

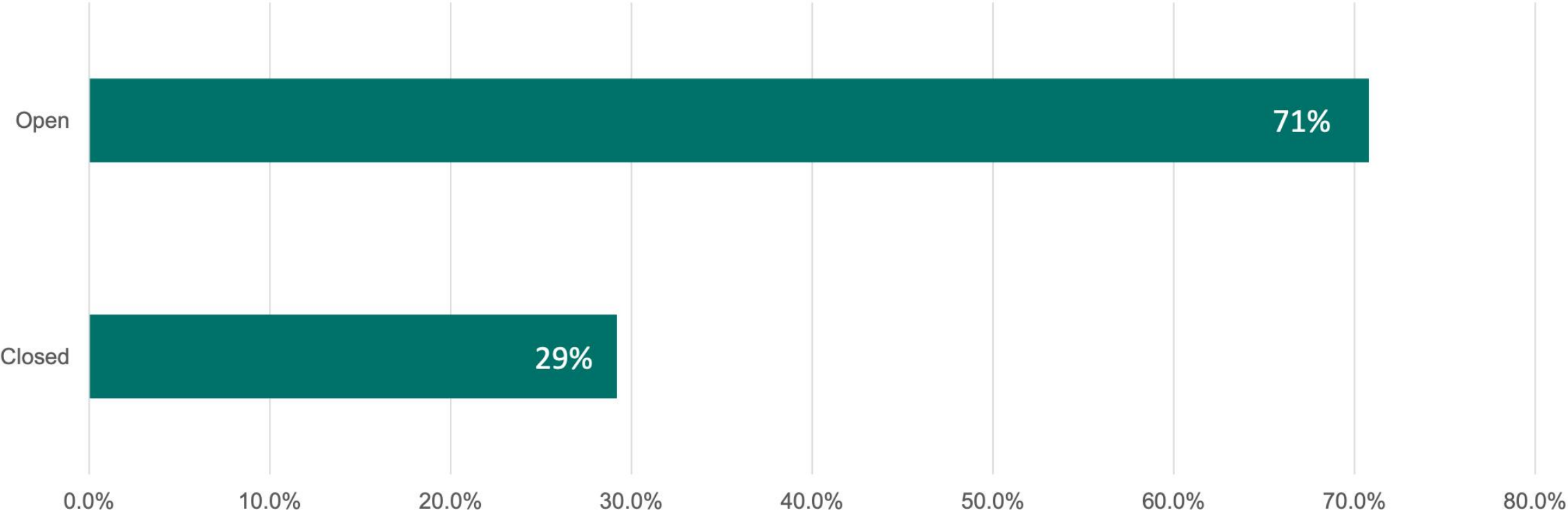
Industry Trust Index

Plotting our the trust scores among survey respondents who work in each respective industry across 5 waves of tracking (5,058+ interviews).

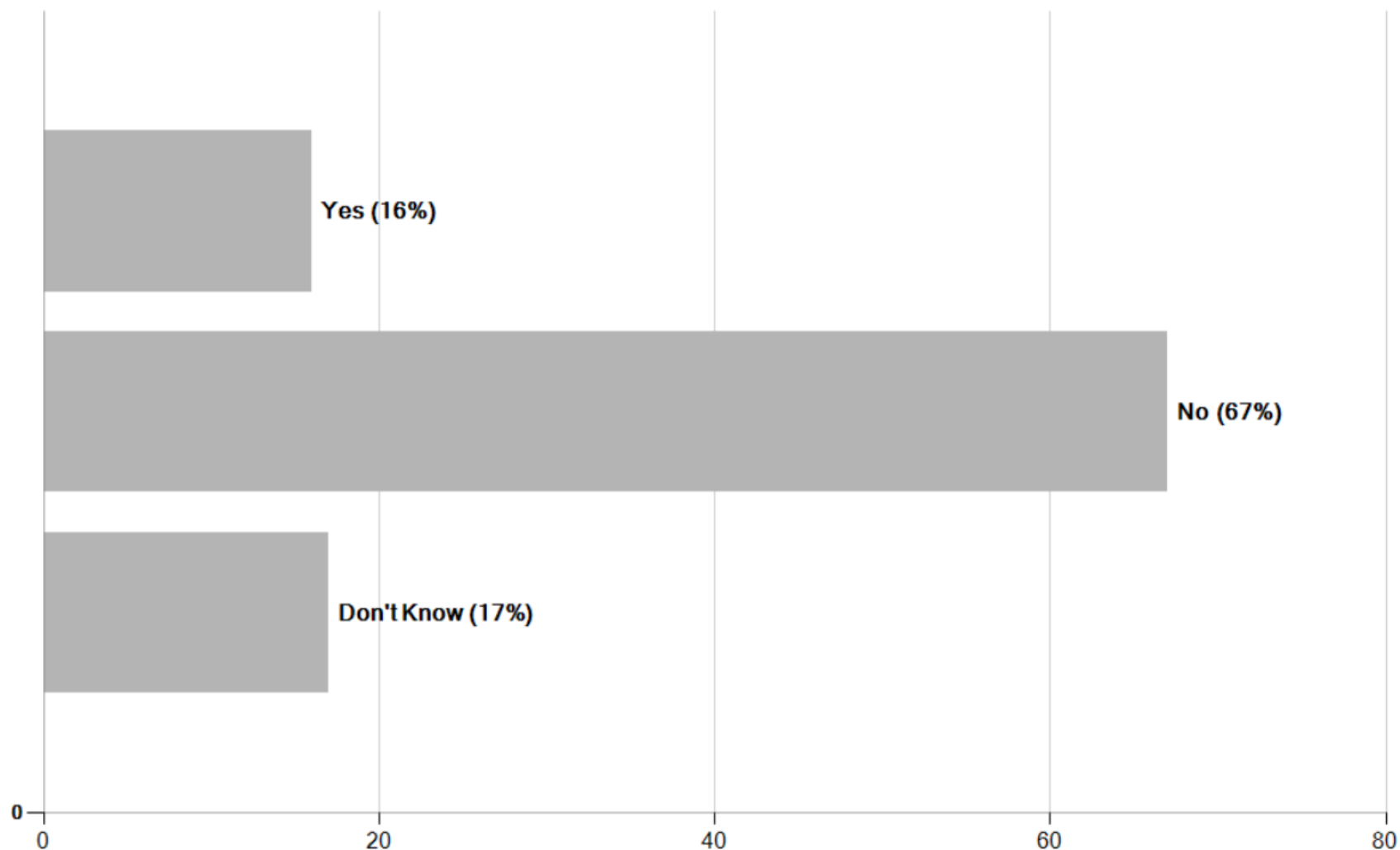


National Snapshot of COVID-19 Impact on United States Museums

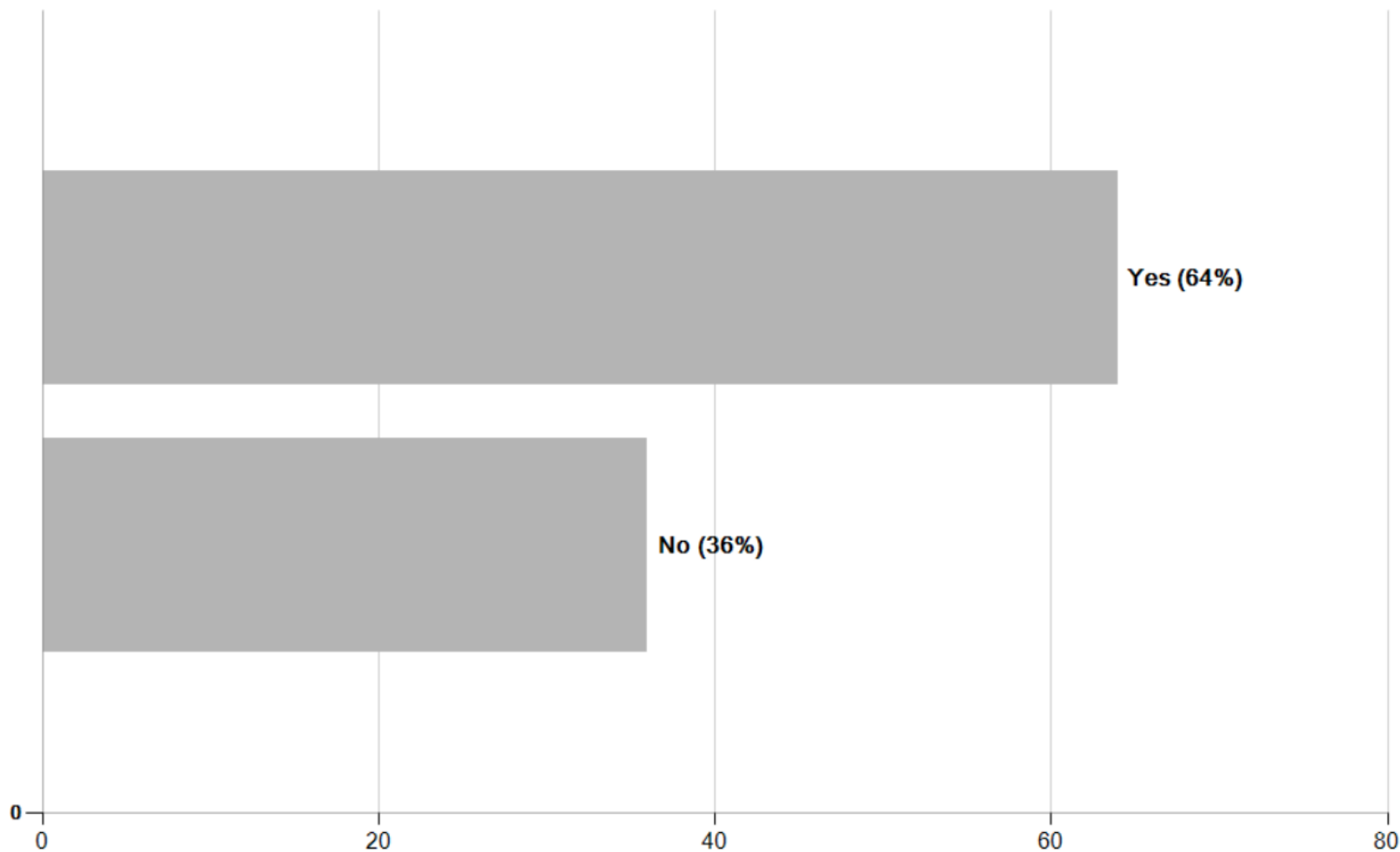
Is the museum currently:



**Do you believe there is a significant risk of your museum closing permanently
in the next 16 months, absent additional financial relief?**

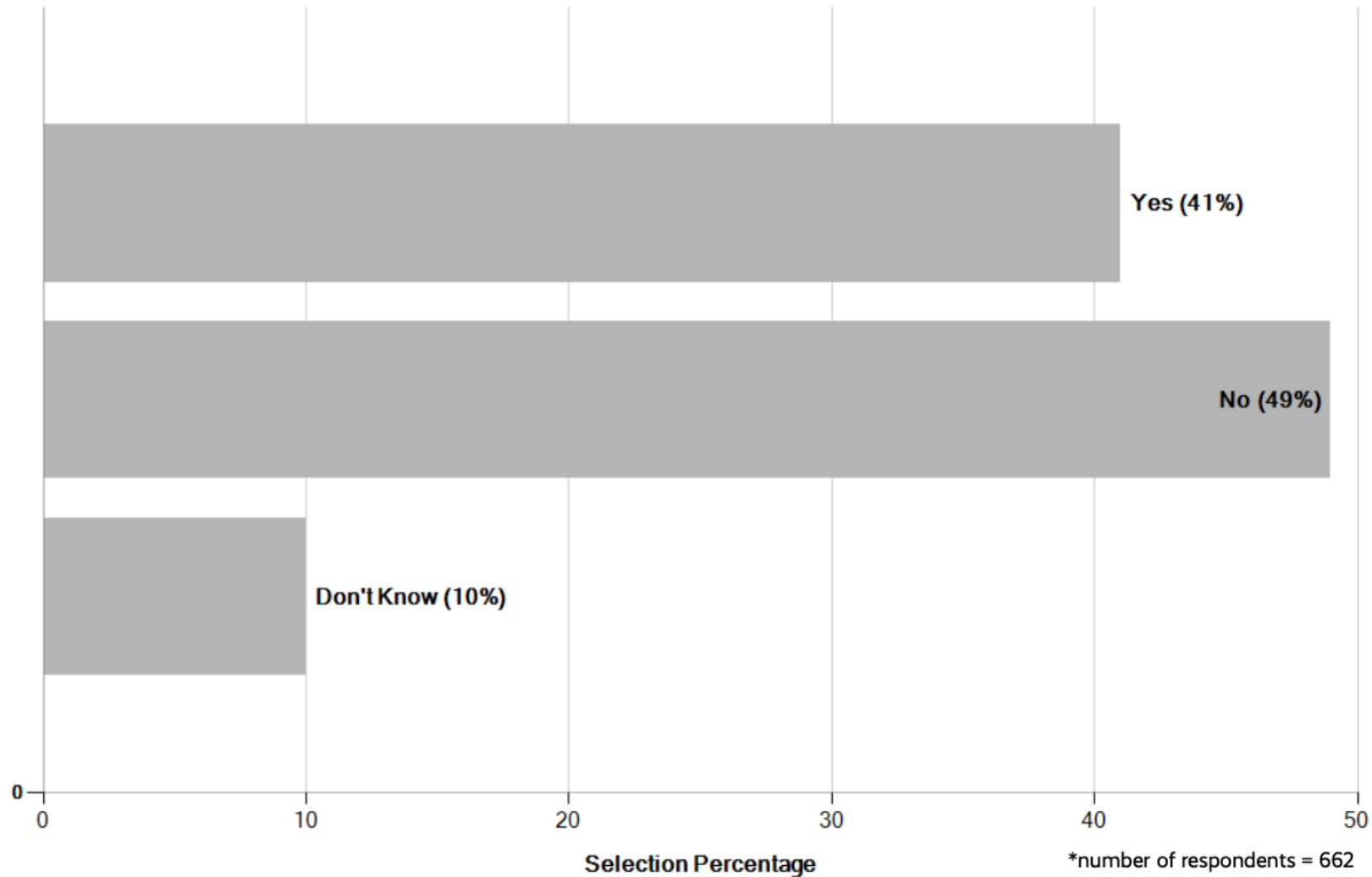


Do you anticipate having to cut back on education, programming, and other public service due to budget shortfalls and/or staff reductions?



*number of respondents = 619

Did you reopen or foresee reopening with reduced staff?



DIFFERENTIATED PATTERNS



30 – 55%



20 – 27 %

OPEN

CLOSED



Museum of Science®



OHIO

OPEN



CLOSED



Columbus Cultural Institutional Pivots...

Columbus Based Institutions - Pivot & Impact



**King Arts Complex with
COSI, CMA, CAPA & WOSU**

What did COSI do?

What about COSI?



...BUT WE HAVE BEEN VERY ACTIVE!!!



Digital

- Digital COSI Connects
- Weekly STEAM At-Home Activities
- Weekly STEAM Video Content
- Social Media Assessment Activities – Teachback
- Science Challenges
- Specialized Mobile App for Offline
- STEAM Video and Radio Podcasts
- Citizen Science Projects
- IVC



Physical

- STEM kits for the underserved
- Community partner driven Wi-Fi connections and Mobile Hotspots



Partnership Model.

- State of Ohio
- Ohio Department of Education
- ODNR
- Ohio Department of Ag
- Foodbanks
- U.S. Department of Energy
- U.S. Department of Agriculture
- NASA
- Children's Hunger Alliance
- And more

INSTITUTIONALLY



VIDEOS



NEW ACTIVITY



PODCAST



SCIENCE CHALLENGE

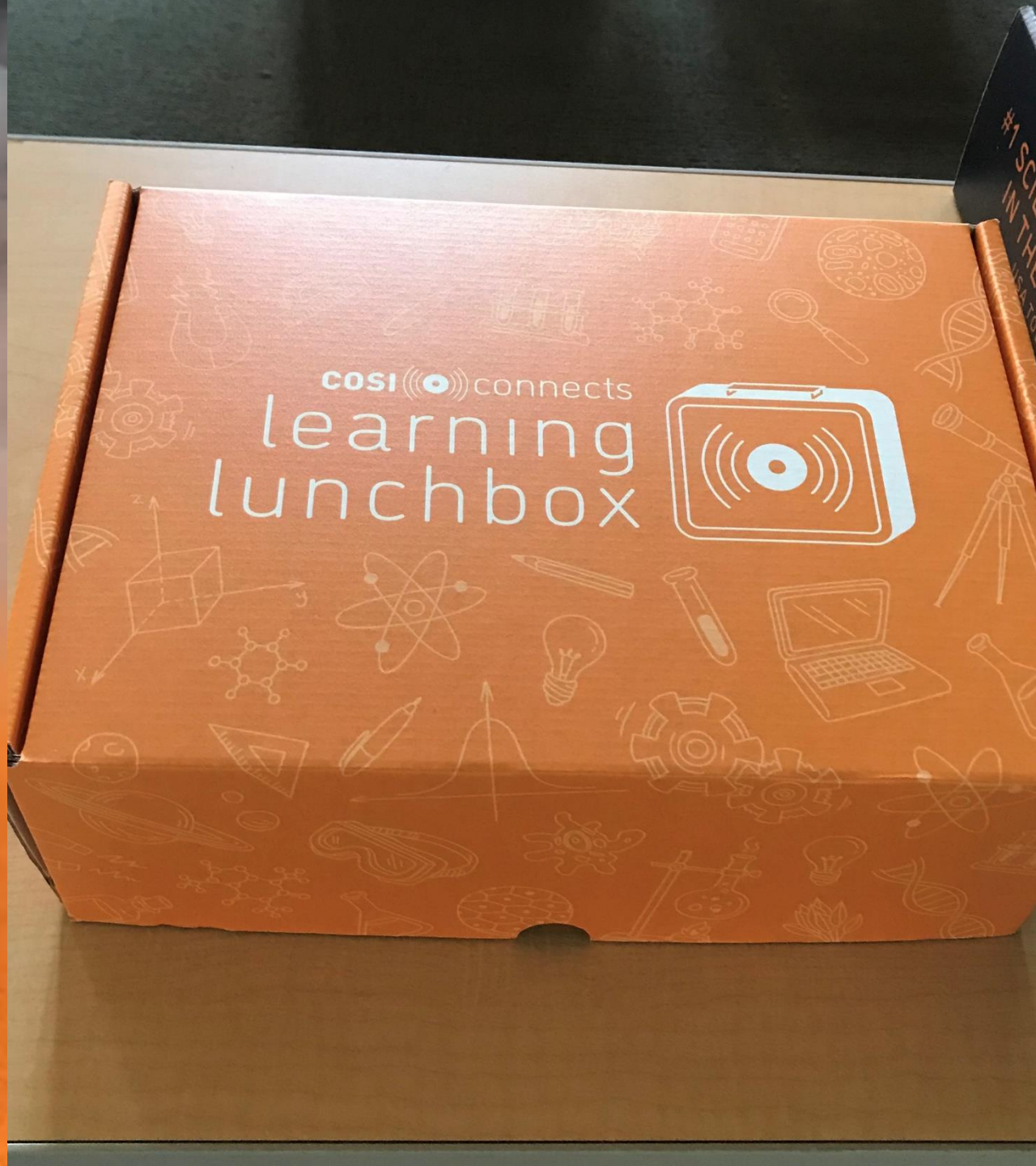
COSI (((o))) connects

AMERICAN MUSEUM OF NATURAL HISTORY
DINOSAUR
GALLERY




#COSIdinos

PHYSICAL



[illegible]

Phase I



The image shows the contents of a 'COSI connects learning lunchbox' kit. The items are arranged in a box with orange tissue paper. The items include:

- A workbook titled 'COSI connects learning lunchbox WORKBOOK'.
- A pair of 3D glasses with the COSI logo.
- A diffraction grating with the text 'DIFFRACTION GRATING' and 'series of five parallel grooves that bend light waves to reveal a spectrum of color'.
- A small container of blue liquid.
- A white cloth.
- A small packet of seeds.

Operations



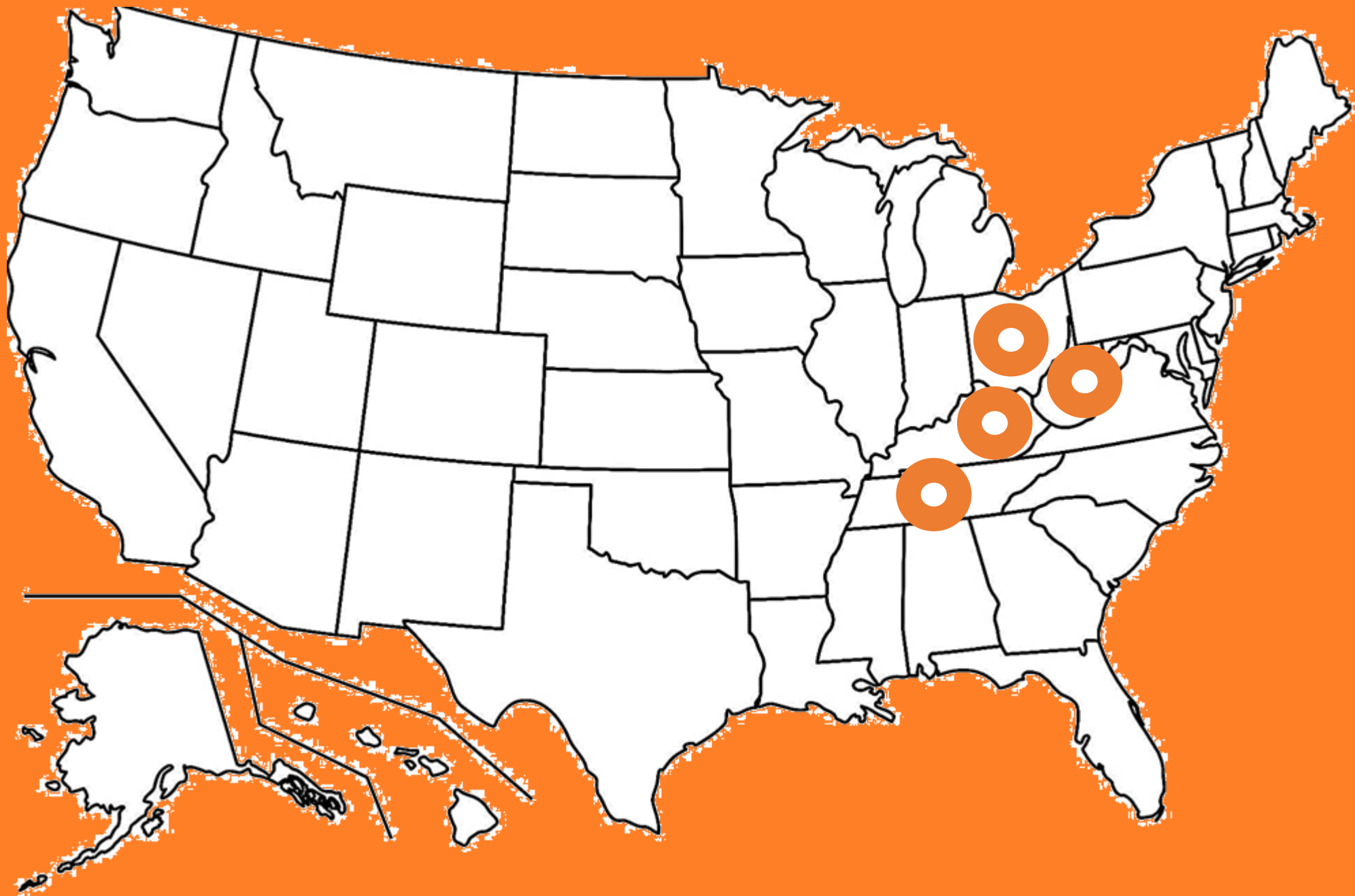
1,000 BOXES PER WEEK











PARTNERS



Lt. Gov. Husted

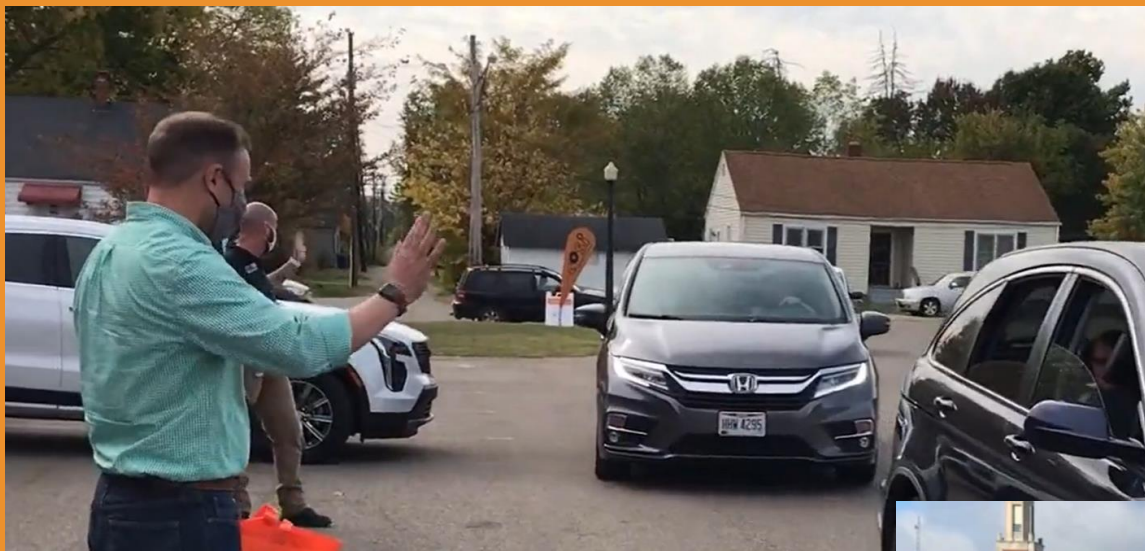




**OHIO
MAYORS
ALLIANCE**



**County
Commissioners
Association of Ohio**



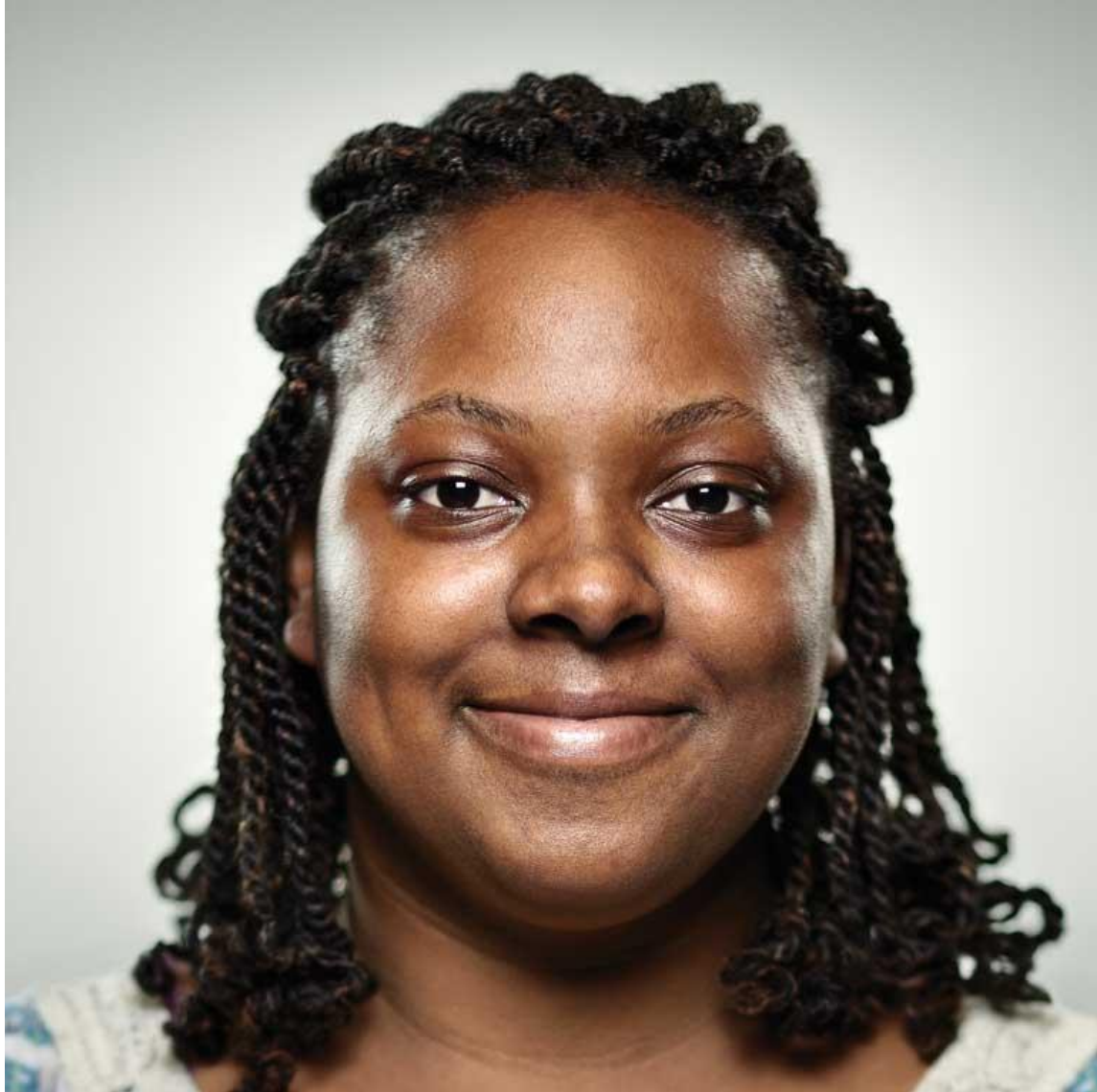


Department of
Agriculture

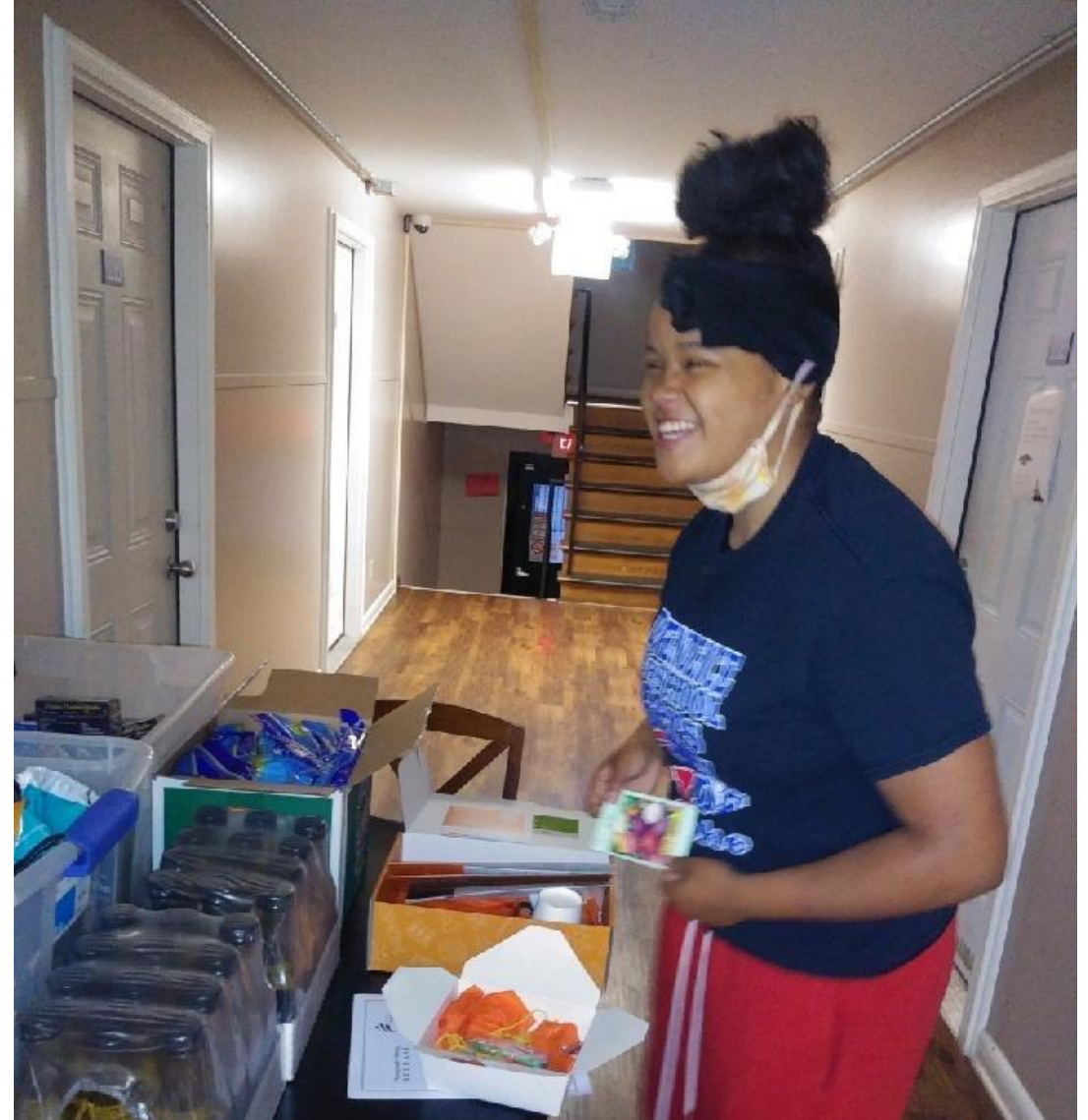
JPMORGAN
CHASE & Co.

Feeding Hungry Minds.

Fulfilling Human Services.



Supporting women and families in recovery



Supporting family bonding for youth in foster homes



Supporting homeless families and youth

GOOD DAY COLUMBUS

> **BRIDGETTE'S STORY**

» COLUMBUS

NATIONAL PARTNERS



Jim Bridenstine



Dr. Frederic Bertley

SPACE BOX WITH NASA



ENERGY BOX

WITH U.S. DEPARTMENT
OF ENERGY



We are excited to partner with COSI on this exciting initiative to educate our youth on STEM.



HYPERLOOP BOX





WORKING AT VIRGIN

Verizon LTE 2:22 PM 13%

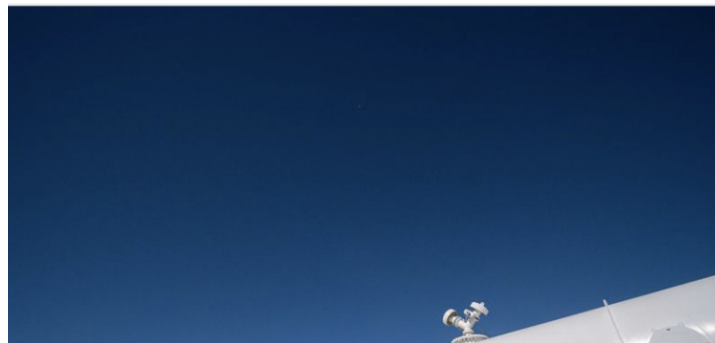
Search



Holly Branson • Following
Virgin Leadership Team
8h •

It's wonderful to see how [Virgin Hyperloop](#) is improving access to [#STEM](#) education for young people. I loved STEM subjects in school and the opportunities they create for young people – particularly when we look to the jobs of the future – can't be underestimated. As distanced learning becomes more important than ever, here's how [COSI - Center of Science and Industry](#) and Virgin Hyperloop will provide critical learning to underserved youth, breaking down barriers in education and building a pipeline of diverse talent across the US: <https://virg.in/xRt> [#VirginFamily](#)

[#Education](#) [#Science](#) [#Careers](#) [#Roles](#)



Hyperloop ve access to education



Ryan Kelly likes this

Richard Branson • 3rd+
Founder at Virgin Group
7h •

[+ Follow](#)

Virgin Hyperloop will help improve access to STEM education:



Virgin Hyperloop to help improve access to STEM education

virgin.com • 1 min read

1,867 58 Comments

[Like](#) [Comment](#) [Share](#)



Home

My Network

Post

Notifications

Jobs

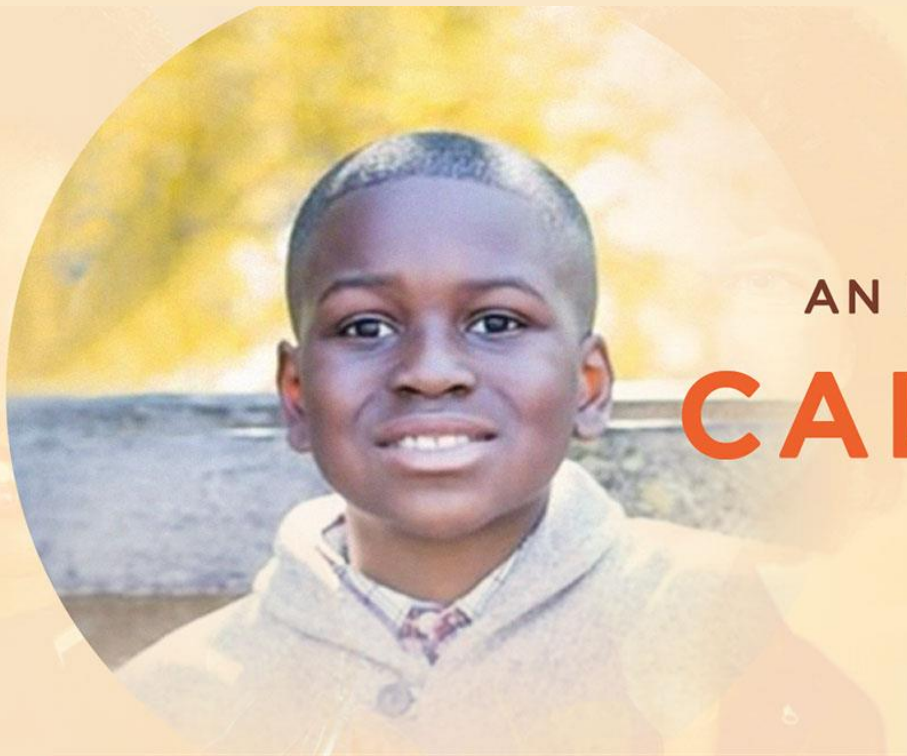


**A CONVERSATION WITH
DR. KATHY SULLIVAN**
GEOLOGIST AND FORMER NASA ASTRONAUT

THE COLOR —
OF SCIENCE

**THURSDAY,
DEC. 3**

3:00-4:00PM EST



AN INSPIRATIONAL CONVERSATION WITH

CALEB ANDERSON

Child prodigy and twelve-year-old college sophomore, as seen on CBS News.

THE COLOR
OF SCIENCE®

**THURSDAY,
JAN.7**

NOON-1:00PM EST



AN INSPIRATIONAL CONVERSATION WITH
NICOLE JACKSON

Learning Scientist and Chief Technology Officer

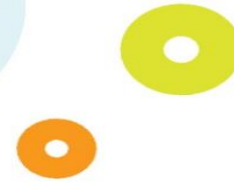
THE COLOR
OF SCIENCE

**THURSDAY,
FEB. 4**

NOON-1:00PM EST

WHAT DOES SUCCESS LOOK LIKE?

Teacher Kit Feedback



"Since you all have been my main point of contact with the Dino kits I wanted to reach back out to thank you all for your help with the whole process! We appreciate it so much and our school had such a good time with the kits! We are looking forward to doing this again in the future.

Here's a picture of my class with their kits. They LOVED them!

Thank you again so much!"

- Kristen Rubin
First Grade Teacher





**Thank
You!**

**Mrs. Rubin's First Grade
Patrick Elementary
Canton City Schools**



covermymeds®







Watch the New Series

QED *with Dr. B*



Wednesday nights at 7:30pm on

WOSU tv



QED *with Dr. B*

Join us for a groundbreaking new primetime TV science show!

- ⚙️ QED with Dr. B highlights breakthroughs in scientific discoveries that impact our daily lives
- ⚙️ Hosted by “Dr. B” – COSI’s own President and CEO, [Dr. Frederic Bertley](#)
- ⚙️ Featuring one-on-one talks between Dr. B and scientists, engineers and innovators from across the globe
- ⚙️ Spotighting cutting-edge science topics in a relatable, digestible way
- ⚙️ New primetime show is the latest partnership between COSI and WOSU Public Media, a PBS affiliate station

[Learn More on WOSU.org](#)

Watch the New Series

QED
with Dr. B



Wednesday nights at 7:30pm on

WOSUtv

Tune in tonight!

What about COSI?



...BUT WE HAVE BEEN VERY ACTIVE!!!



ENGAGE

TRANSFORM

INSPIRE

Thank you!

Generator







Dr. Frederic Bertley

COSI's Vision and Mission
TO **ENGAGE, INSPIRE, & TRANSFORM**
lives and communities by being the best place to work in science, technology, and industry leadership.



Paul Dabbar

HUMAN BODY BOX

Human Body BOX

Welcome to the COSI Human Body Box!

The first step to being healthy is understanding your body. Your body is made up of many interconnected systems that work together to help you do ALL the things you do every day! With this box, you will learn a little bit more about a few of these systems.

- In this book, you will find activities that use each of the supplies in your box.
- This is your activity book! You can take notes and draw pictures as you go.

Hi! I'm a biomedical engineer! Biomedical engineers use engineering to solve medical problems and create new healthcare technologies.



ACTIVITY 1: The Nervous System



The **nervous system** is a very important system in your body. It includes your brain, spinal cord, and many nerves throughout your body. The nervous system controls everything you do – including the other body systems! It tells your heart to beat, your lungs to breathe, and your muscles to move. It helps you to see, smell, taste, hear, and feel things. It even helps you think. You are always using your brain and **nervous system**.


If your friend tosses you a ball and you see it coming, your eyes send a message to your brain. Your brain decides how to respond. It may then send a signal through your nerves to the muscles in your hands and arms to reach out and catch the ball! The time it takes from when you first notice the ball to when you reach out to catch it is called reaction time. Try finding your own reaction time!

 **start here!**
See a cool video!



This is your reaction time ruler!



 **gather your supplies:**



FROM BOX

- Reaction time ruler



FROM HOME

- A partner

 **what to do:**

Unfold your Reaction Time Ruler and straighten it. You will use this ruler to determine your reaction time. The numbers on the ruler are in seconds.

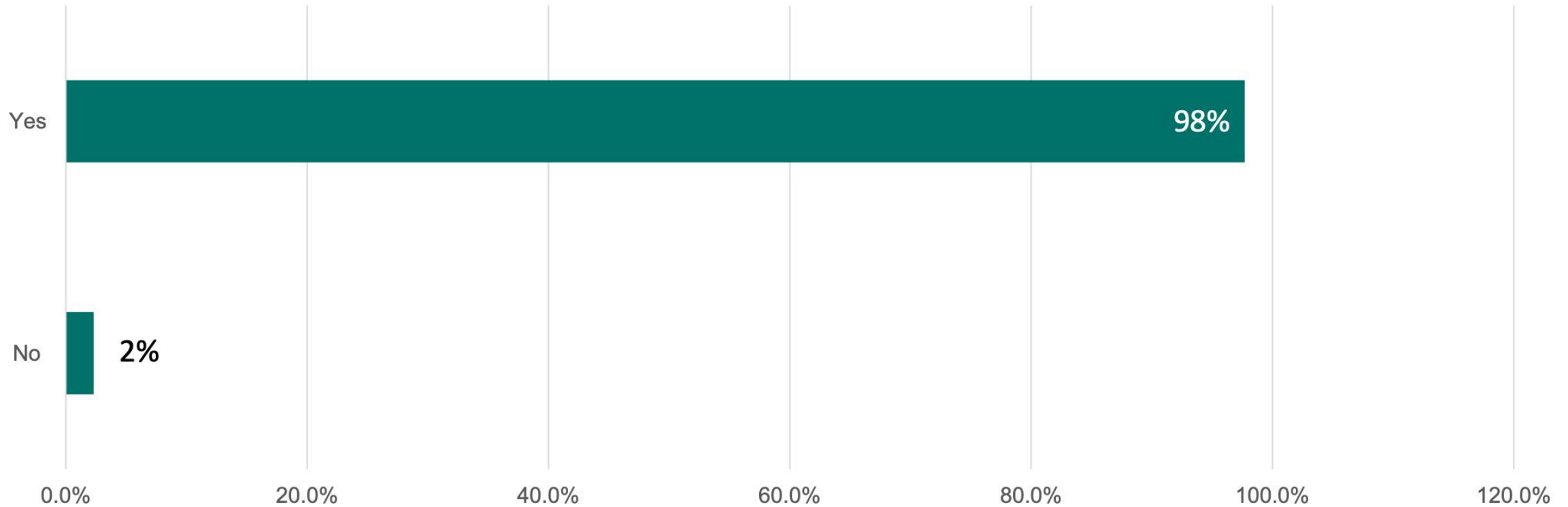
TICKET RESERVATION AND SALES



Opening week
(Members only)

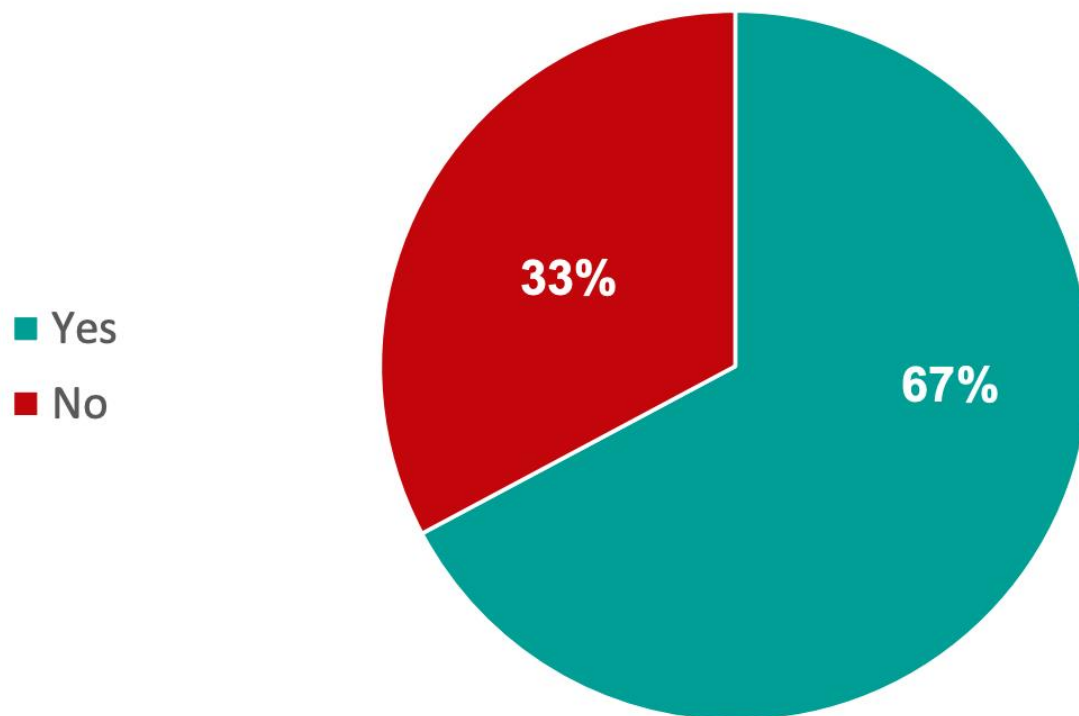
National Snapshot of COVID-19 Impact on United States Museums

Did the museum temporarily close to the public due to COVID-19 at some point this year?



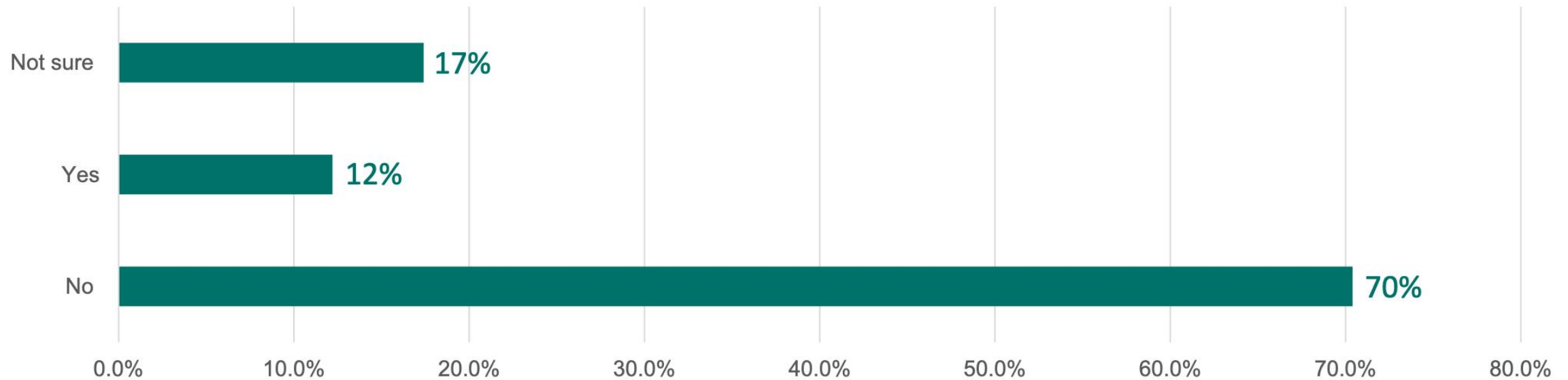
National Snapshot of COVID-19 Impact on United States Museums

Have you had to cut back on education, programming, and other public service due to budget shortfalls and/or staff reductions?



National Snapshot of COVID-19 Impact on United States Museums

Do you believe there is a significant risk of your museum closing permanently in the next 12 months, absent additional financial relief?



29% of museum directors surveyed confirmed there was a “significant risk” (12%) of closing permanently by fall 2021, or they “didn’t know” (17%) if they would survive. Numbers do not add up to 100 due to rounding convention.