

COLUMBUS[★] CLIMATE ACTION PLAN

EXECUTIVE SUMMARY



**SUSTAINABLE
COLUMBUS[★]**

ANDREW J. GINTHER, MAYOR

OVERVIEW

Columbus' Climate Action Plan (CAP) is a coordinated, living document to ensure the City is doing its part to combat the effects of climate change while imparting equity and environmental justice to disproportionately affected community members. Summer heat emergencies, more frequent flooding, and increasingly stronger storms are stressing infrastructure, endangering human life and increasing the cost of living in Columbus.

The CAP lays out a thoughtful set of actions that City government, private businesses, organizations and residents can implement to reach the 2050 carbon neutrality goal. The five sections of the CAP outline **13 strategies** that have **32 quantifiable actions** which can significantly reduce the community's greenhouse gas (GHG) footprint, while also creating a more equitable and resilient community.

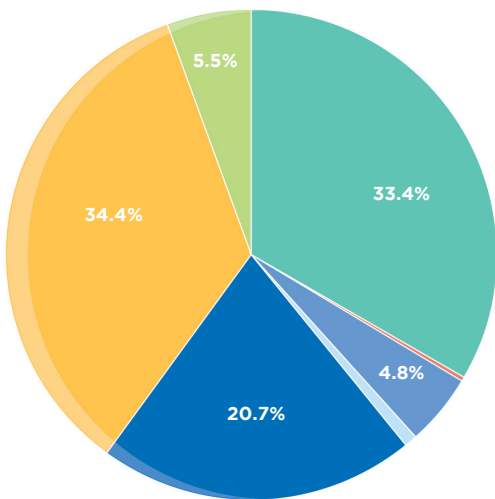
45%

.....
**GHG REDUCTION
 BY 2030**

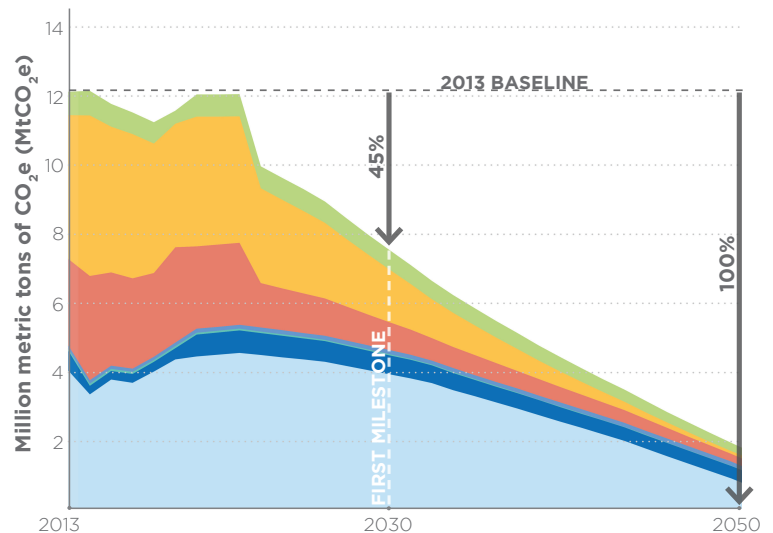
100%

.....
**GHG REDUCTION
 BY 2050**

**2013 COMMUNITY-SCALE BASELINE
 INVENTORY BY SECTOR**



**MODELED EMISSIONS POTENTIAL OF
 CAP STRATEGIES**



- Transportation
- Water
- Residual & Fugitive Emissions
- Solid Waste
- Industrial Energy
- Residential Energy
- Commercial Energy

LEADING WITH EQUITY

Impacts of climate change are being felt daily by residents throughout Columbus. As our community faces increasingly hotter days and stronger, more frequent rain storms, it's our communities of color and marginalized communities who are most at risk.

Black and African American individuals are 40% more likely to live in areas with the highest projected increase in mortality rates due to climate-driven extreme temperatures, and 34% more likely to live in areas with the highest projected increase in childhood asthma due to climate-driven air pollution. Hispanic and Latino individuals live in areas with the highest projected labor hour losses in weather-exposed industries due to more frequent climate-driven hot days with high temperatures.

ANTICIPATED COLUMBUS CLIMATE IMPACTS

- Longer Growing Season
- Deteriorated Air Quality
- Extreme Heat
- Shifting Natural Resources
- Deteriorated Water Quality
- Increased Flood Risk
- Changing Seasonal Precipitation
- Changes to Water Availability

COMMUNITY ENGAGEMENT

Due to centering equity and environmental justice, community engagement is, and will be critical to the ongoing success of the CAP. Stakeholder engagement groups and community input have been coordinated throughout the CAP process. Ten virtual meetings, downloadable Meeting Toolkits, and a feedback website captured nearly 850 comments.

Overwhelmingly, community feedback demonstrated care and urgency around climate action, asking for the plan to do more, and do it faster. The second phase of the project took that to heart, and pushed significantly harder on ambition and timelines of the short-term strategies and 2030 target.

EXPECTED BENEFITS

In addition to GHG reductions and climate adaptation actions, priority outcomes - which are called expected benefits in the CAP - are evaluated to improve equitable outcomes to all community members when implemented.



Climate Justice: equitable distribution of benefits from climate action planning across the diverse community



Environmental Quality: preserves and improves natural ecosystems and promotes biodiversity



Human Health: improves public health through reduced pollutants and hazards, and increasing active habits



Economic Prosperity: provides opportunity for funding revenue streams, reduced or stable energy costs, and/or job creation

MITIGATION AND ADAPTATION

While the overarching goal of our CAP is to reduce our emissions and develop a blueprint to reach carbon neutrality by 2050, it would be short-sighted to ignore the impacts of climate change that we have already experienced, and will continue to experience with disproportionate impacts in the community.

In May 2020, Columbus experienced record-breaking rainfall that led to substantial flooding throughout the City and the Central Ohio region. Columbus' average temperature has increased by 2.3°F between 1951 and 2012 and is on track to continue rising up to an additional 5°F by 2050. Incorporating the principles of mitigation and adaptation into our strategies will be essential in minimizing the severity of these impacts.

mit·i·ga·tion:

human interventions to reduce the sources of greenhouse gases

ad·ap·ta·tion:

the process of adjustment to expected climate and its effects

STRATEGIES AND ACTIONS

Outlined on the right, the five sections of the CAP organize the 13 strategies which each have quantifiable actions. Key criteria in developing the actions were the magnitude of direct and indirect GHG emissions reductions, high-level costs and expected benefit contributions.

Lead agencies from City departments and partner organizations were consulted to ensure that there was consensus on an equitable implementation pathway aligned with the targets. In addition to continuing to track GHG inventories, the City will review and update the plan on a five year schedule starting in 2025.



CLIMATE SOLUTIONS: THE COLUMBUS WAY

- 1 Empower a community of climate leaders
- 2 Develop a clean energy economy
- 3 Enhance partnerships for preparedness efforts



SUSTAINABLE NEIGHBORHOODS

- 4 Support a healthy and resilient community
- 5 Implement land use planning strategies for healthy ecosystems
- 6 Prepare for warmer and wetter seasons



BUILDINGS

- 7 Increase renewable energy
- 8 Increase building efficiency
- 9 Adopt net zero and resilient building standards



TRANSPORTATION

- 10 Enable carbon free vehicles
- 11 Support equitable mode shift



WASTE

- 12 Reduce waste generated
- 13 Increase waste diversion rate