

## PLACEMENT

LOCAL COLLECTOR AND RESIDENTIAL STREETS SHALL HAVE THE SAME SIZE POST AND PLACEMENT STANDARDS.

WHEN CONDITIONS ALLOW, COMBINE TRAFFIC CONTROL SIGNS ON STREET NAME SIGN POST.  
WHEN THE LENGTH OF SIGN MAY PROTRUDE PAST THE CURB RADIUS THE SIGN MAY BE ROTATED 180\*

## STREET NAME SIGN

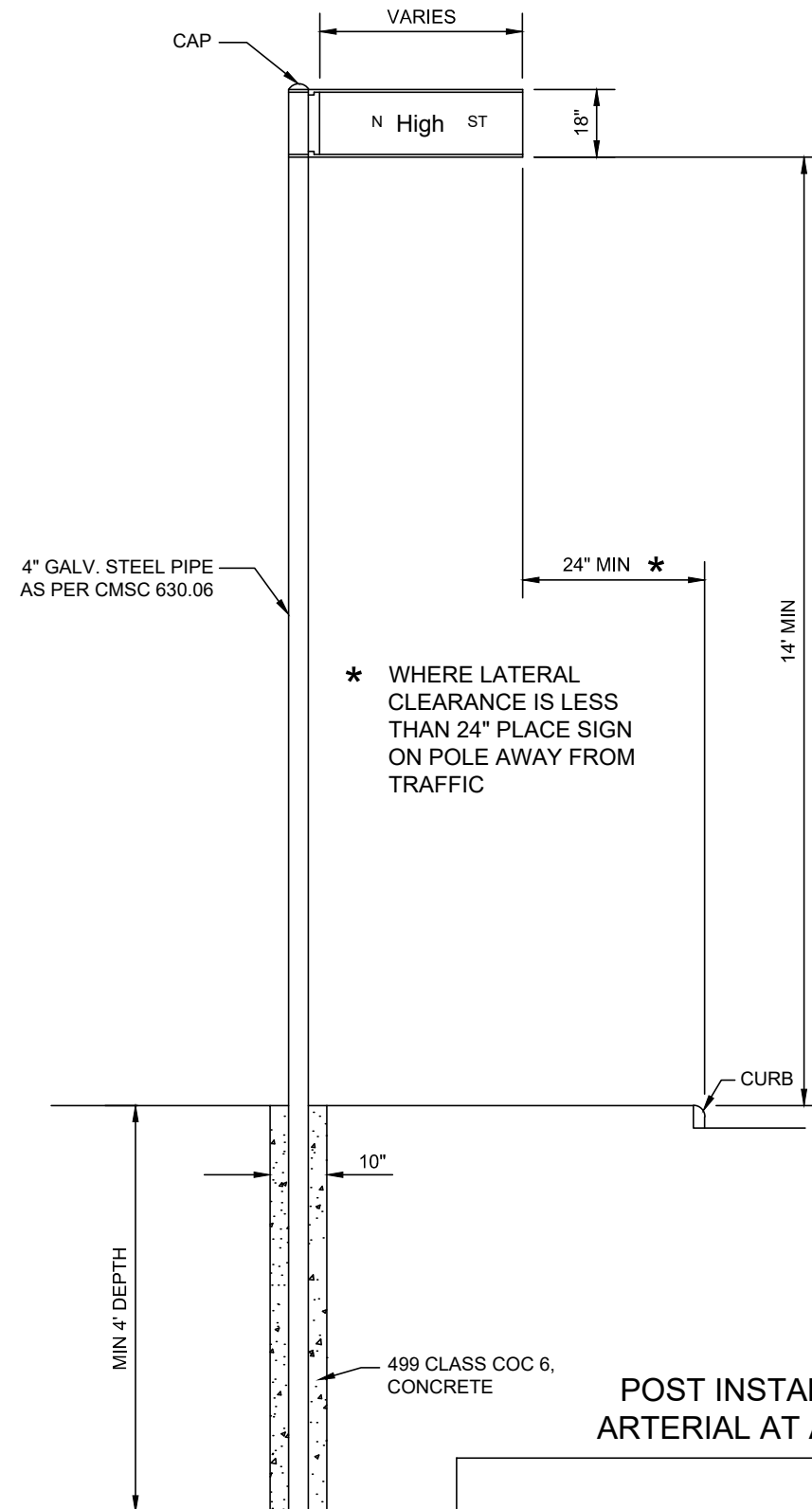
CITY OF COLUMBUS, OHIO  
DEPARTMENT OF PUBLIC SERVICE  
DIVISION OF DESIGN AND CONSTRUCTION

CITY ENGINEER

STD DWG  
**2185**

07/01/2023

SHT 1 OF 10



DIMENSIONS SHOWN SHALL BE CONSIDERED MINIMUM DIMENSIONS FOR NEW INSTALLATIONS AS WELL AS FOR INSTALLATIONS USING EXISTING SUPPORTS SUCH AS UTILITY POLES AND TRAFFIC SIGNAL POLES.

ONLY ONE STREET NAME SIGN PER SUPPORT SHALL BE LOCATED NEAR-LEFT AND FAR-RIGHT AT ALL LOCATIONS UNLESS OTHERWISE SPECIFIED.

POST INSTALLATION  
ARTERIAL AT ARTERIAL

## STREET NAME SIGN

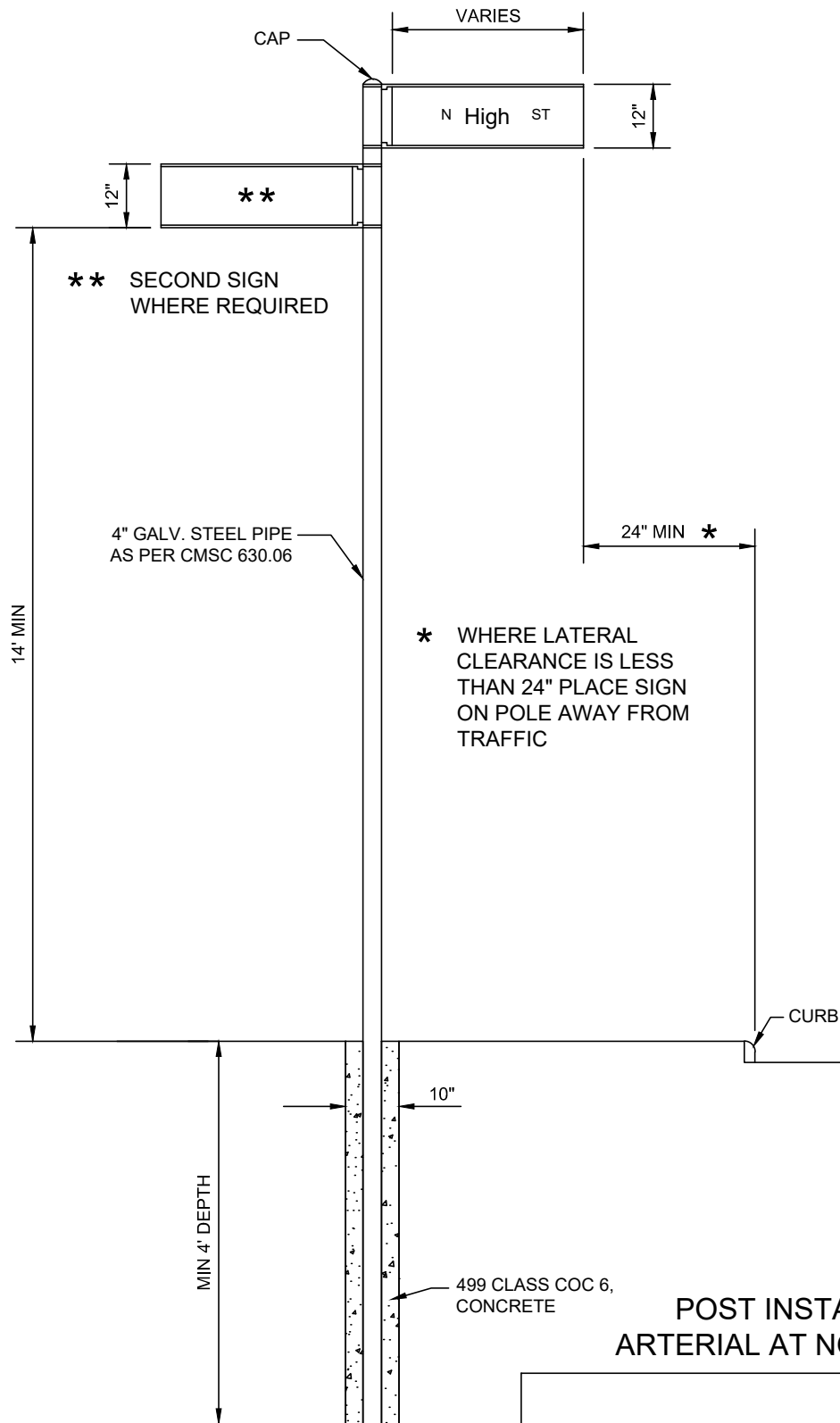
CITY OF COLUMBUS, OHIO  
DEPARTMENT OF PUBLIC SERVICE  
DIVISION OF DESIGN AND CONSTRUCTION

STD DWG

2185

07/01/2023

SHT 2 OF 10



SIGNS SHALL BE LOCATED FAR-RIGHT FOR THE ARTERIAL WITH 2 SIGNS PER SUPPORT. IF THE COMBINED SQUARE FOOTAGE EXCEEDS 10 SQUARE FEET, A SEPARATE SUPPORT SHALL BE USED FOR EACH SIGN.

## POST INSTALLATION ARTERIAL AT NON-ARTERIAL

# STREET NAME SIGN

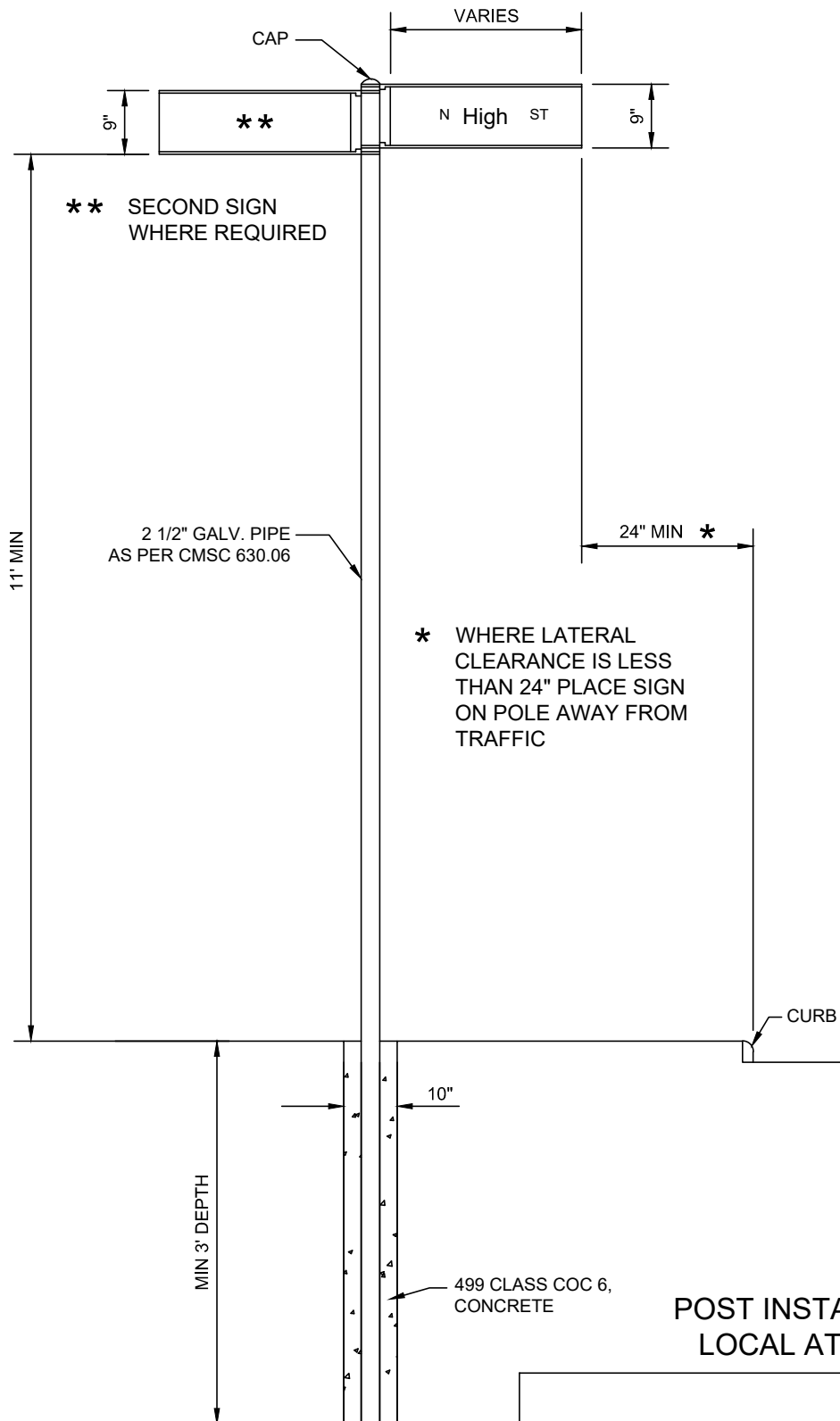
CITY OF COLUMBUS, OHIO  
DEPARTMENT OF PUBLIC SERVICE  
DIVISION OF DESIGN AND CONSTRUCTION

STD DWG

2185

07/01/2023

SHT 3 OF 10



POST INSTALLATION  
LOCAL AT LOCAL

## STREET NAME SIGN

LOCAL COLLECTOR AND RESIDENTIAL STREETS  
SHALL BE TREATED THE SAME.

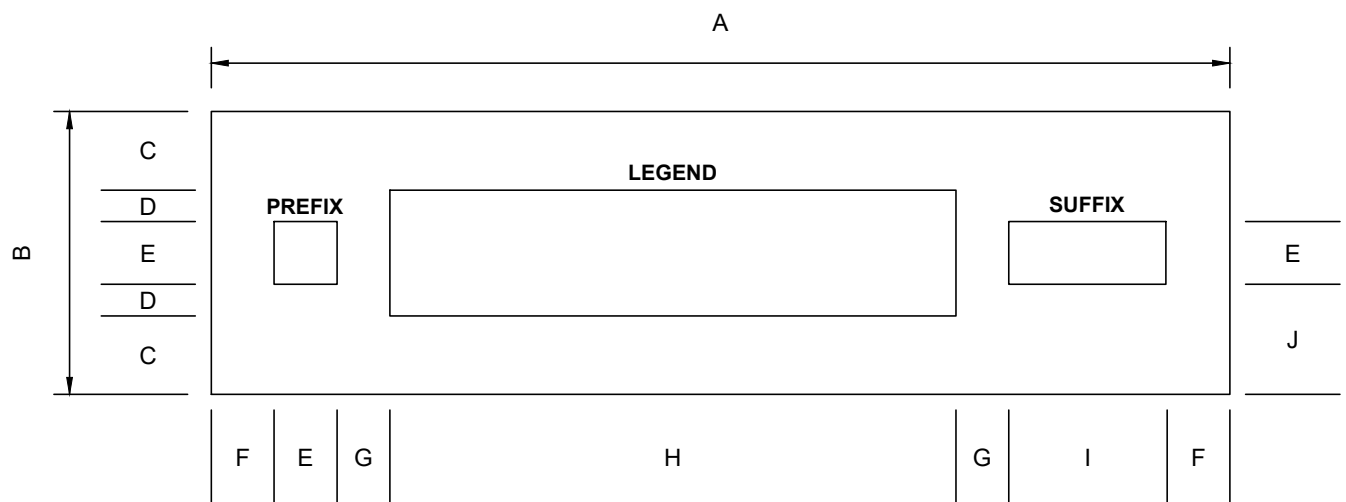
CITY OF COLUMBUS, OHIO  
DEPARTMENT OF PUBLIC SERVICE  
DIVISION OF DESIGN AND CONSTRUCTION

STD DWG

2185

07/01/2023

SHT 4 OF 10



SIZE	A	B	C	D	E	F	G	H	I	J
9" SIGN	VARIES	9.0"	2.5"	1.0"	2.0"	2.0" MIN	2.0" MIN	VARIES	VARIES	3.5"
12" SIGN	VARIES	12.0"	3.0"	1.5"	3.0"	3.0" MIN	3.0" MIN	VARIES	VARIES	4.5"
18" SIGN	72.0" MAX	18.0"	5.0"	2.0"	4.0"	4.0" MIN	4.0" MIN	VARIES	VARIES	7.0"

BLADE

## STREET NAME SIGN

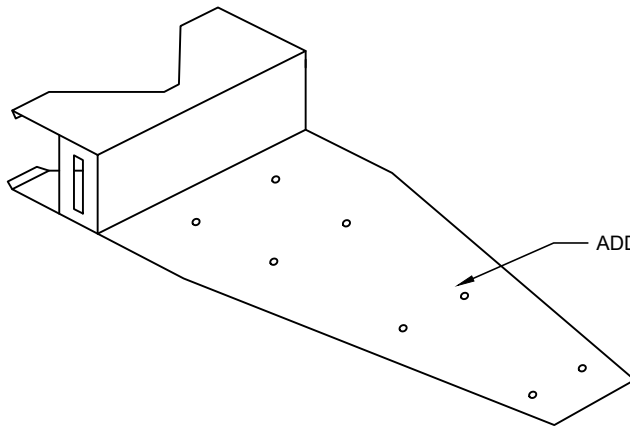
CITY OF COLUMBUS, OHIO  
DEPARTMENT OF PUBLIC SERVICE  
DIVISION OF DESIGN AND CONSTRUCTION

STD DWG

2185

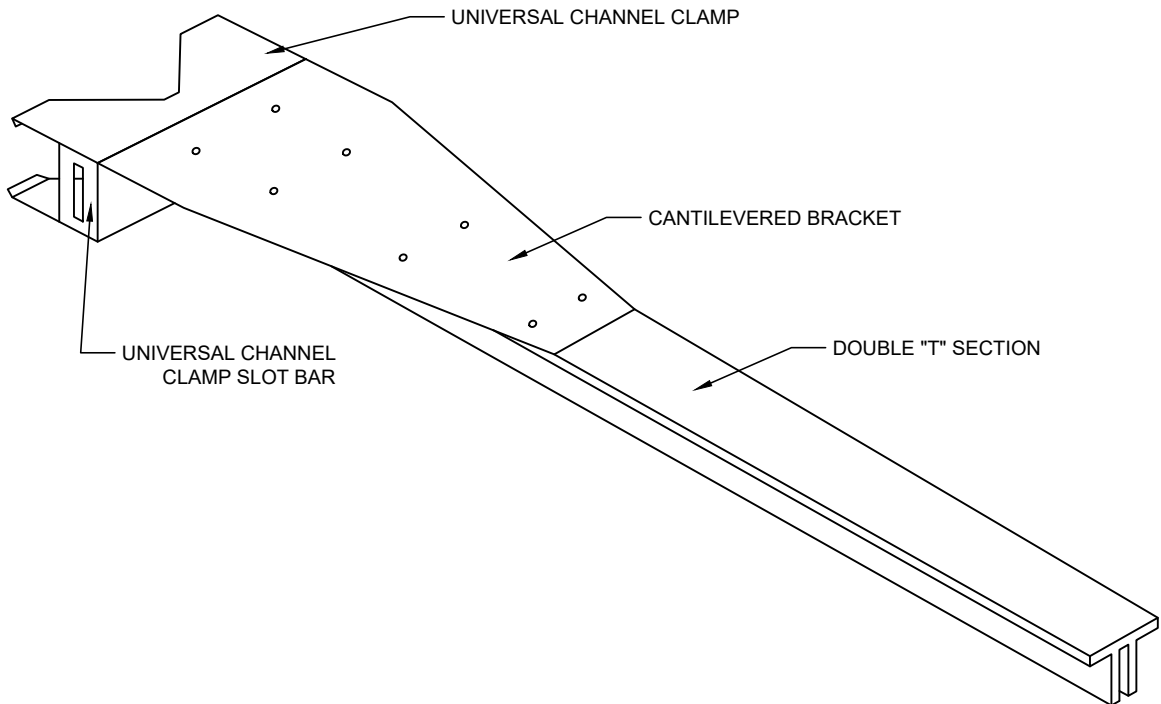
07/01/2023

SHT 5 OF 10



ADDITIONAL CANTILEVERED BRACKET \*

\* USED WHEN SIGN AREA EXCEEDS SIX (6) SQUARE FEET. PLACE TWO (2) BRACKETS BACK TO BACK ON TOP AND BOTTOM OF SIGN BLADE.



UNIVERSAL CHANNEL CLAMP

CANTILEVERED BRACKET

UNIVERSAL CHANNEL  
CLAMP SLOT BAR

DOUBLE "T" SECTION

## MOUNTING HARDWARE

# STREET NAME SIGN

FASTEN TO SUPPORT WITH PRE-ASSEMBLED  
BUCKLE-STRAP COMBINATION ASSEMBLY.

THE CANTILEVER BRACKET SHALL BE BANNED TO THE  
SUPPORT USING TYPE 201 STAINLESS STEEL WITH A  
MINIMUM THICKNESS OF 0.036" AND 3/4" WIDTH.

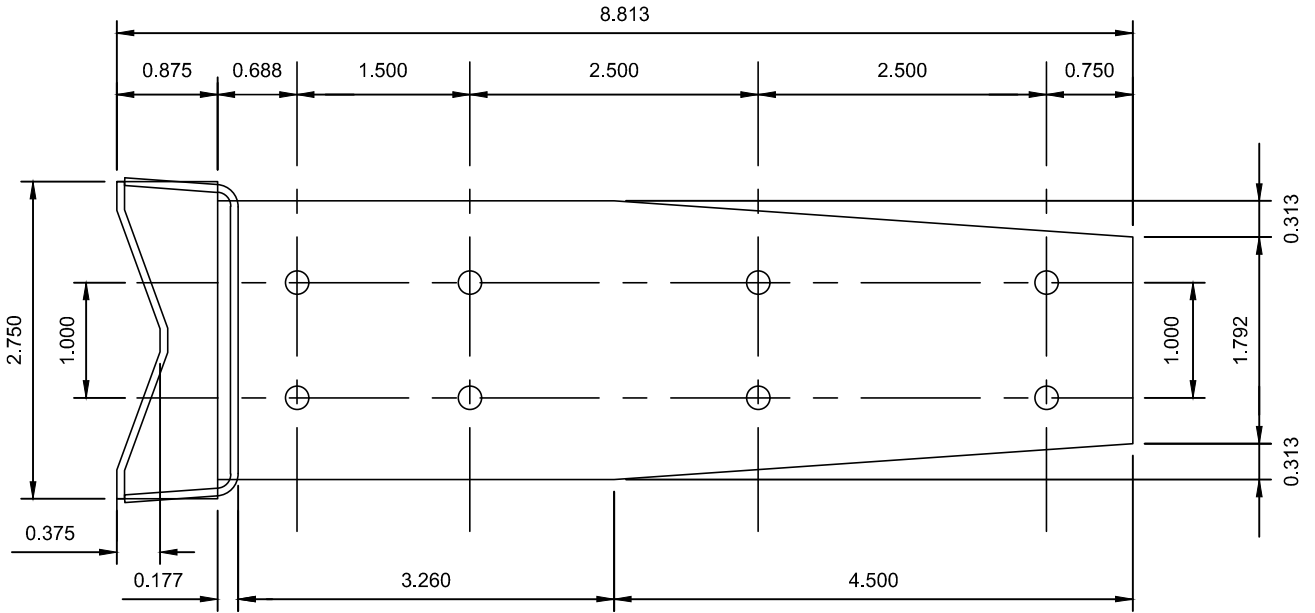
CITY OF COLUMBUS, OHIO  
DEPARTMENT OF PUBLIC SERVICE  
DIVISION OF DESIGN AND CONSTRUCTION

STD DWG

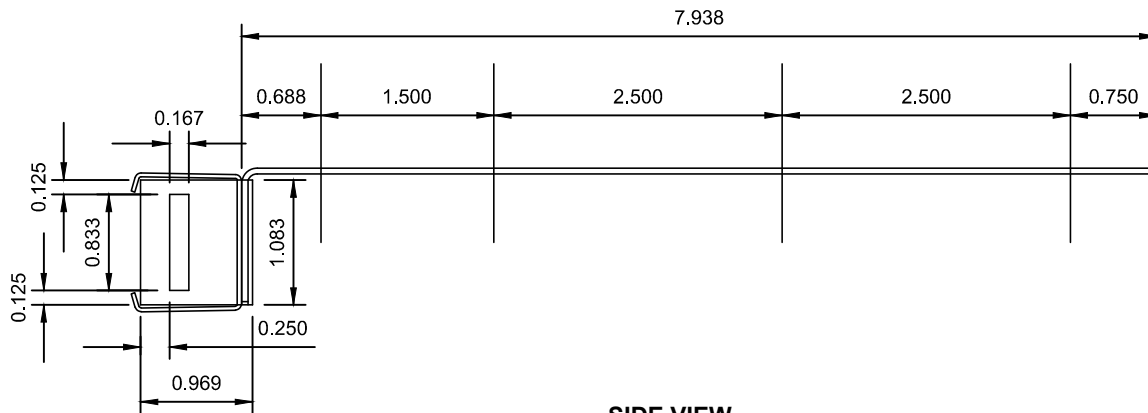
2185

07/01/2023

SHT 6 OF 10



TOP VIEW



SIDE VIEW

MOUNTING HARDWARE  
CANTILEVER BRACKET

STREET NAME SIGN

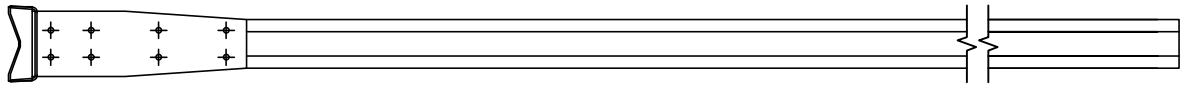
CITY OF COLUMBUS, OHIO  
DEPARTMENT OF PUBLIC SERVICE  
DIVISION OF DESIGN AND CONSTRUCTION

STD DWG

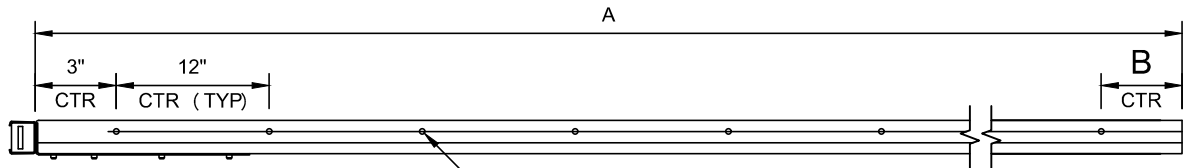
2185

07/01/2023

SHT 7 OF 10



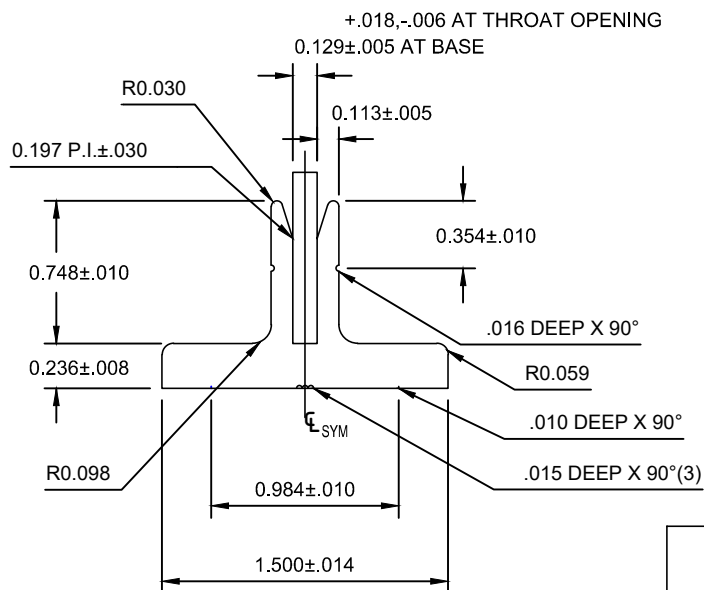
PLAN



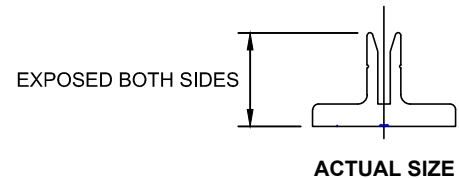
N HOLES, 13/64" DIA FOR 3/16" RIVET

ELEVATION

A (inches)	B (inches)	N (number of holes)
42	3	4
48	1	4
54	3	5



SECTION



MOUNTING HARDWARE  
DOUBLE TEE, TYPE II

STREET NAME SIGN

USE TYPE II TEE FOR 9" AND 12" BLADES THAT ARE  
42", 48" AND 54" LONG.

USE TYPE I TEE FOR 9" AND 12" BLADES THAT ARE  
LESS THAN 42" LONG.

CITY OF COLUMBUS, OHIO  
DEPARTMENT OF PUBLIC SERVICE  
DIVISION OF DESIGN AND CONSTRUCTION

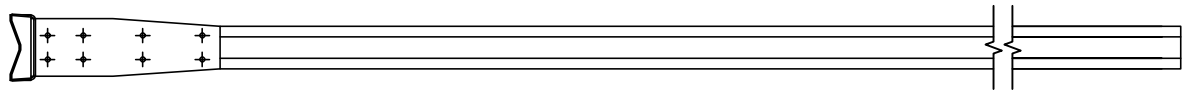
STD DWG

2185

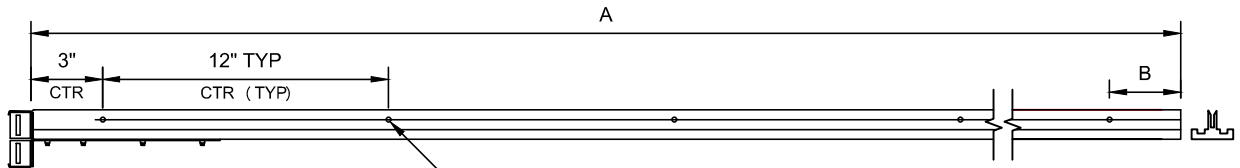
07/01/2023

SHT 8 OF 10





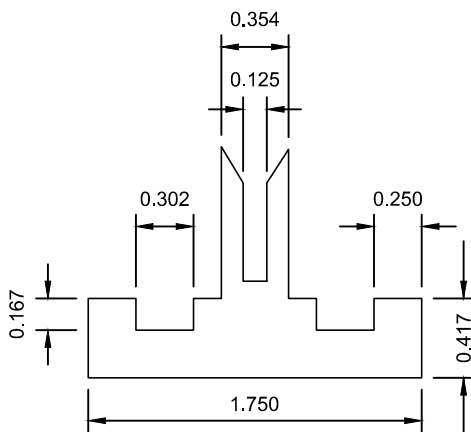
PLAN



N HOLES, 13/64" DIA FOR 3/16" RIVET

ELEVATION

A (inches)	B (inches)	N (number of holes)
42	3	4
48	1	4
54	3	5
60	1	6
72	1	7



SECTION

MOUNTING HARDWARE  
DOUBLE TEE, TYPE III

STREET NAME SIGN

USE TYPE III TEES FOR 9" AND 12" BLADES THAT ARE 60", 66" & 72" LONG AND ALL 18" BLADES WITH BACK TO BACK CANTILEVER BRACKETS.

CITY OF COLUMBUS, OHIO  
DEPARTMENT OF PUBLIC SERVICE  
DIVISION OF DESIGN AND CONSTRUCTION

STD DWG

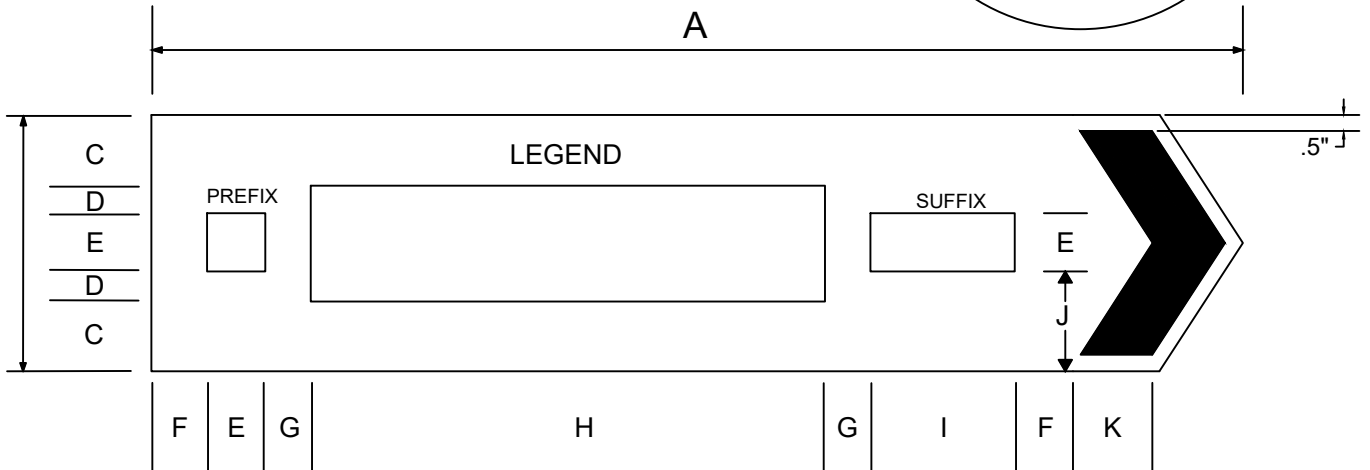
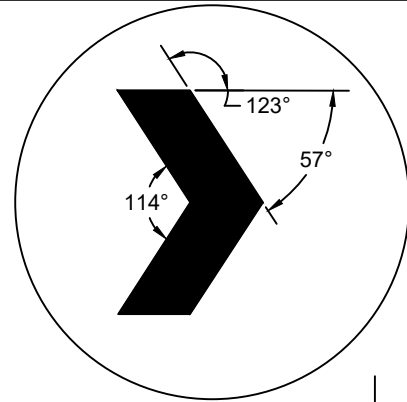
2185

07/01/2023

SHT 9 OF 10



EXAMPLE



SIZE	A	B	C	D	E	F	G	H	I	J	K
18" SIGN	72" MAX	18"	5"	2"	4"	4" MIN	4" MIN	VARIES	VARIES	7"	3"

STREET NAME LEGENDS SHALL BE 8" HIGH UPPER AND LOWER CASE. STANDARD FHWA SERIES D 2000 EX LETTERING SHALL BE USED. PREFIXES AND SUFFIXES SHALL BE 4" HIGH, UPPER AND LOWER CASE. ALL LETTERS SHALL BE CENTERED ON THE VERTICAL DIMENSION AND THE LEGEND WILL BE CENTERED ON THE HORIZONTAL.

## ROUND-ABOUT

### STREET NAME SIGN

CITY OF COLUMBUS, OHIO  
DEPARTMENT OF PUBLIC SERVICE  
DIVISION OF DESIGN AND CONSTRUCTION

STD DWG

**2185**

07/01/2023

SHT 10 OF 10