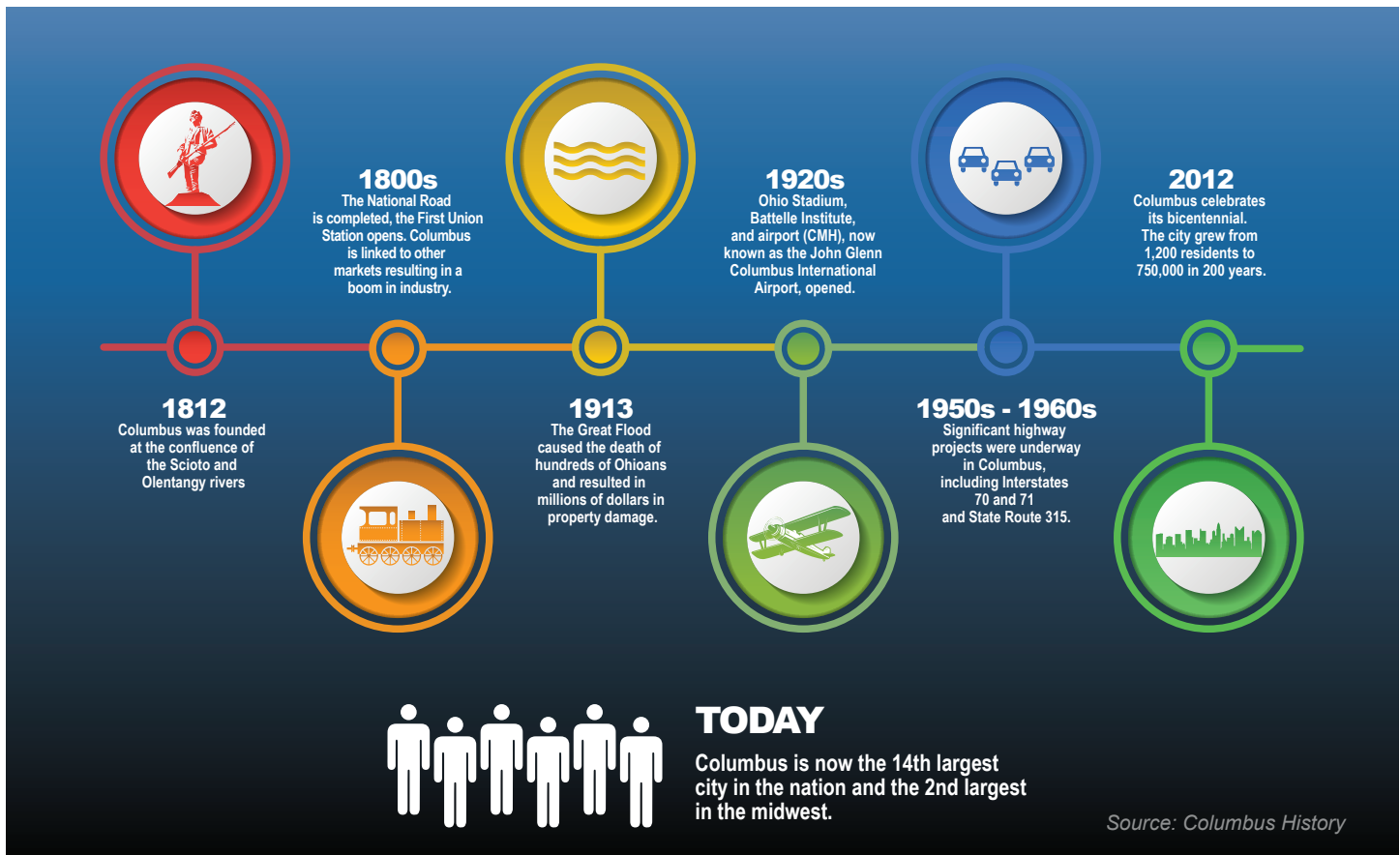


Columbus Community Profile

THE CITY OF
COLUMBUS



Columbus was founded in 1812 at the confluence of the Scioto and Olentangy rivers. In 1803, the year of Ohio's statehood, the capital was moved from Chillicothe, located 45 miles to the south, to Zanesville, located 50 miles to the east, and back to Chillicothe. Created specifically to be the capital city, state officials finally selected a centralized location in Columbus in 1812 and the city officially became Ohio's permanent capital in 1816.

Currently, Columbus maintains its ranking of the 14th most populated city in the United States. Covering almost

226 square miles, the city is recognized nationwide for its historic neighborhoods, booming downtown arts and sporting districts, open attitude, and notably affordable quality of life. The city's economy is very diverse, and the community prides itself on being at the forefront of education reform, fiscal responsibility, and public safety.

Economic investments in the future of Columbus have created jobs and spurred major initiatives focused on improving neighborhoods, community health, and the environment.

Columbus Government



The city is a home-rule municipal corporation operating under the laws of Ohio. The City Charter, its constitution, can only be amended by a majority of the city's voters.

The city is administered by a Mayor, a seven-member City Council, the City Auditor and the City Attorney. These officials are all elected for four-year terms on an at-large basis. The Mayor and four Council members are elected in an odd numbered year. Three Council members, the City Auditor, and the City Attorney are elected in the following odd numbered year. The City Charter provides for appointments and elections of successors to these officials if they should, for any reason, vacate their office. All are chosen through a non-partisan process.

The Recreation and Parks Director, the Health Commissioner, and the Civil Service Executive Director are appointed by, and report to, independent commissions. The City Treasurer and Clerk to the Council are appointed by, and serve at the pleasure of, City Council. All other departments' directors are appointed by, and serve at the pleasure of the Mayor.

Stay Connected

The myCOLUMBUS free Mobile App allows access to numerous city services, a community events calendar, park and trail guides, and tips for a healthy lifestyle, among other resources.



Key City Services at a Glance

Development

Annual Average Emergency
& Non-Emergency Requests 36,414
Annual Average Code Violation Notices 18,393

Neighborhoods

Neighborhood Pride Centers 5
311 Service Requests Received in 2021 327,092

Public Health

Licensed Food Facilities
Compliant with Health Standards 99.8%
Annual Average Immunizations 238,831

Public Safety

Annual Average EMS &
Fire Runs Dispatched 173,825
Fire Stations 35
Police Substations 17
Annual Average 911 Police Service Calls... 641,491

Public Service

Roadway Lane Miles Maintained 5,678 Miles
Refuse Total Households Served..... 350,000
Recycling Tons Collected 35,000
Bridges Maintained 209

Public Utilities

City-Owned Sewer and
Water Lines Maintained 7,119 Miles
Wastewater Treatment Plants..... 2
Water Treatment Plants 3
Gallons of Wastewater Treated (2021) 68 Billion
Gallons of Drinking Water Treated..... 51.8 Billion
Service Population 1.3 Million Customers
City Power Customers 16,605

Recreation & Parks

Park Sites 407
Acres Maintained (Including Reservoirs)..... 15,600
Swimming Pools, Spray Grounds,
Splash Pads & Fountains 17
Golf Courses 6
Multi-Use Trails 131 Miles
Community Centers 28
Athletic Complexes 5

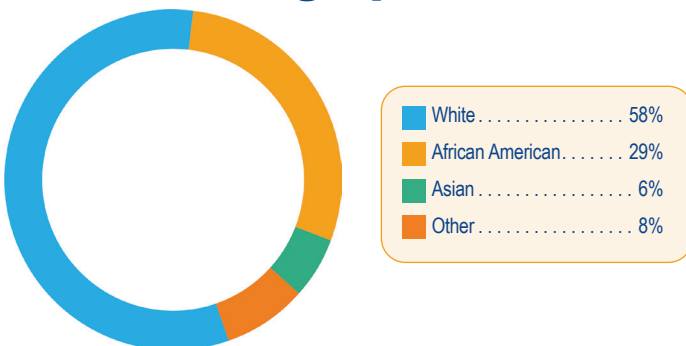
Columbus Demographics



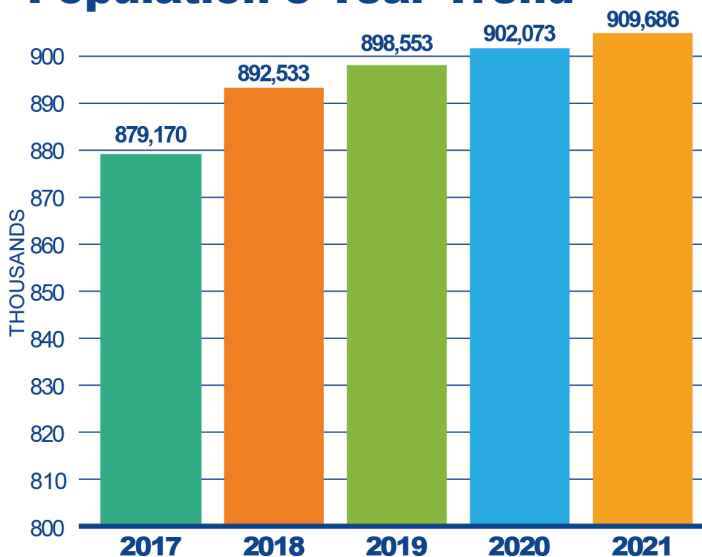
The population of Columbus is diverse, young, and has a growth rate double the national average. The city's population is well educated, with over 36.8 percent having earned a bachelor's or advanced degree compared to the national average of 32.9 percent.

Source: U.S. Census Bureau, 2020 American Community Survey Estimated

Racial Demographics



Population 5 Year Trend



Population Quick Facts

Population Size 909,686
Population per Square Mile 4,116

Population Growth Rate

COLUMBUS 13.8%
National Average 6.9%

Median Income

COLUMBUS \$54,902
National \$64,994

Median Age

COLUMBUS 32.4
National 38.5

Population by Age

Under 18 22.3%
18 to 65 67.3%
Over 65 10.4%

Sex

Female 51.2%
Male 48.8%

FUN FACT!
Columbus has
never declined in
population



Source: With the exception of the total population, the figures in this table are from U.S. Census Bureau 2020 Estimates, QuickFacts & American FactFinder

Columbus Transportation

Columbus is located in the heart of the Midwest and is within a one day drive or one hour flight to nearly half of the population in the United States and one-third of the population in Canada. Eight major interstates cross through Columbus, providing convenient access from coast to coast and benefitting in-state commerce. In recent years, Columbus was recognized by Inbound Logistics as one of the nation's logistical hotspots.

Source: Columbus Region

Columbus is also home to the **Columbus Regional Airport Authority** which connects central Ohio with the world through the operation of three airports:

John Glenn Columbus International Airport: Service to nearly 50 destination airports with over 150 daily flights and 5.8 million annual passengers.

Rickenbacker International Airport: A multimodal logistics hub serving international airfreight, cargo airlines, manufacturers, and distributors with almost 300,000 annual passengers.

Bolton Air Field: Services the needs of area businesses, private pilots, and aviation enthusiasts. In addition, Columbus is also home to **The Ohio State University Airport**, with over 75,000 operations per year, including corporate activity, student training, and pleasure flying.

Source: Columbus Regional Airport Authority

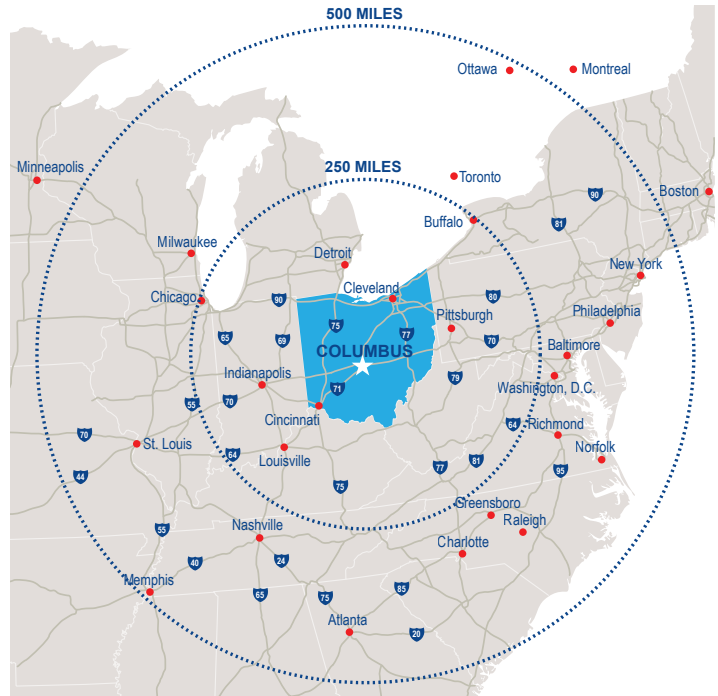
Other Means of Getting Around Columbus:

Public Transportation: The Central Ohio Transit Authority (**COTA**) provides bus service to over 9 million annual passengers with 38 total operational routes serving a 562 square mile area.

Sharing Services: **COGO** provides on demand access to over 600 bicycles located at 80 stations throughout downtown and adjoining neighborhoods. **Zipcar** provides car-sharing service in on-street parking spots downtown, as well as in the Short North, German Village, and Weinland Park. **Uber** and **Lyft** connect people in need of a ride with available drivers. Electric scooter share options are available through **Bird**, **Lime**, **Link**, and **Spin**.

Two Wheels: Columbus' bikeway program encourages traveling in and around Columbus via bicycles and maintains protected bike lanes and 230 miles of connected trails in the region.

Taxi Services: Pedicabs provide bike taxi service throughout downtown, and taxicabs offer taxi service throughout the city.



Columbus Employment

Columbus serves as headquarters to major national and multinational corporations including Nationwide Mutual Insurance, L Brands, Huntington Bancshares, American Electric Power (AEP), and Big Lots. In recent years, the healthcare industry has emerged as a growth sector, with the city boasting four nationally recognized health system employers; each employ thousands of healthcare workers and contribute billions of dollars to the local economy.



| Employer Name | Central Ohio Employees |
|---|------------------------|
| The Ohio State University | 35,210 |
| State of Ohio | 24,897 |
| Ohio Health | 24,512 |
| JPMorgan Chase & Co | 17,480 |
| Nationwide Insurance | 16,000 |
| Nationwide Children's Hospital | 13,161 |
| Kroger | 12,018 |
| Amazon | 9,200 |
| City of Columbus | 8,705 |
| Mt. Carmel Health | 8,182 |
| L Brands | 7,600 |
| Honda | 6,612 |
| Huntington Bancshares | 5,741 |
| Cardinal Health Inc. | 4,596 |
| American Electric Power Co. | 4,500 |
| <i>Source: Columbus Business First: Largest Central Ohio Employers, Published July 2021</i> | |

Several major employers have made central Ohio home in recent years, investing millions of dollars in the local economy and expanding the region's economic base. The table below lists private companies that have made recent significant investments in the Columbus economy.

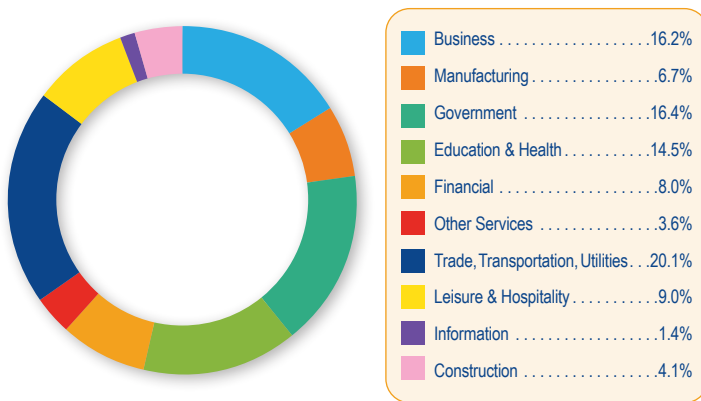
| Company | Type | Product | Investment |
|--|-----------------------|-----------------|---------------|
| Facebook | Data Center | Data Center | \$875 million |
| Amazon | Data Center | Cloud Computing | \$455 million |
| Nationwide Children's Hospital/Andelyn Bioscience | Manufacturing/ R&D | Pharmaceuticals | \$90 million |
| <i>Source: Ohio Private Investment Survey 2018-2020, Ohio Development Services Agency, June 2021</i> | | | |

Columbus Workforce Environment

Columbus has a stable, diverse employment environment with a large range of employment opportunities. All employment sectors have 20 percent or less of the workforce, indicating the city is well diversified in this area.

Since 2011, almost every sector has experienced growth. The construction sector has experienced growth of over 50 percent, followed by the financial sector, with growth of 23 percent, and the education and health sector, with growth of 23 percent.

Source: U.S. Bureau of Labor Statistics



Largest Colleges & Universities

Educational opportunities in Columbus range from career training programs to top-ranked schools and universities. Employers have access to a large, well-educated, and highly skilled workforce. The city is home to more than 52 nearby colleges and universities, with a total enrollment of more than 134,000 students and over 22,000 annual graduates. In addition, Columbus offers a large variety of workforce development programs through community, technical, and vocational schools.

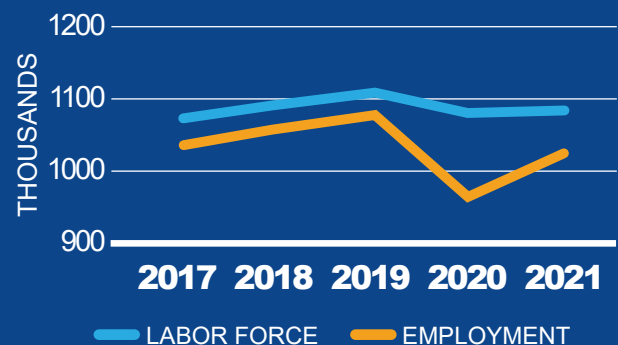
| University | Enrollment |
|--------------------------------|------------|
| The Ohio State University | 61,369 |
| Columbus State CC | 28,159 |
| Franklin University | 6,031 |
| Central Ohio Technical College | 3,469 |
| Capital University | 3,226 |



Source: Source: Columbusregion.com/colleges-universities/



Workforce Quick Facts 5 Year - Labor Force Trend



Workforce Size 1,084,502

Unemployment Rate
Columbus 5.7%
National Average 6.1%

Mean Hourly Wage
Columbus \$26.04
National Average \$27.07

Highest Paid Occupation
Management \$56.96

Lowest Paid Occupation
Food preparation \$12.17

Mean Travel Time to Work
Columbus 23.8 (minutes)
National Average 27.1 (minutes)

Source: U.S. Bureau of Labor Statistics, U.S. Census Bureau

Columbus Economic Development

Columbus ranks as the 14th largest city in the United States with a city population of 906,528. Population numbers reflect the July 1, 2021 (V2021) U.S. Census Bureau estimates.

- Columbus metropolitan statistical area (MSA): 2,101,543
(Source: US Census ACS 5-yr, 2020)
- Columbus enjoys a workforce of over 1.1 million, the median age of which is 36.1 years, or 2.1 years below the national average.
(Source: BLS and US Census ACS 1-yr, 2020 [U.S. Median age is 38.2])
- The annual cost of living in Columbus is over fifteen percent below the national average.
(Source: Bestplaces.net)
- Twenty Fortune 1000 companies operate their headquarters within the City of Columbus.

The Columbus economy is balanced with a combination of education, technology, government, research, insurance and health care entities as major employers within the city. As one of the fastest growing cities in the United States, these diverse investments are indicators of a strong economy and continue to signal markets across the globe that Columbus is a great place to do business. Columbus frequently earns nationwide recognition for its booming downtown, historic neighborhoods, arts and sporting districts, open attitude, and a noticeably affordable quality of life. The City of Columbus remains on its growth trajectory from 2022 into 2023 and continues to absorb a tremendous number of net new jobs and investment throughout the city.



Downtown Development Quick Facts

Investments (\$)

| | |
|------------------------------|--------|
| Proposed | \$1.9B |
| Under Construction | \$684M |
| Completed | \$541M |

Largest Proposed Projects

| | |
|---|--------|
| Peninsula Phase 2 | \$211M |
| 70/71 Phase 6B-E – West Interchange | \$280M |
| 70/71 Phase 4B – South Innerbelt | \$246M |
| North Market Tower | \$292M |
| Millennial Tower | \$150M |
| 70/71 Phase 6R – Outbound Downtown | \$120M |
| 70/71 Phase 4R – Fulton Exit EB | \$115M |
| Harmony Tower | \$120M |

Private and Public Investment

| | |
|---------------------------|----------|
| Total 2011-2021 | \$3.336B |
| Total Residents | 11,200 |

Housing Units

| | |
|------------------------------|-------|
| Proposed | 1,984 |
| Under Construction | 969 |
| Completed | 579 |

Apartment Occupancy Rate 91.7%

Office Vacancy Rate 18.4%

Colleges & Universities

4 institutions with 33,711 students

(Downtown - Columbus State Community College, Franklin University, Columbus College of Art & Design, Capital University Law School)

Hotels 19

Annual Visitors (2021) 2.9 million

(Source: State of Downtown Columbus Year End 2021 prepared by Capital Crossroads & Discovery Special Improvement Districts.)

Columbus Economic Development

CoverMymeds, LLC and CHI Franklinton, LP are constructing a new corporate headquarters for CoverMyMeds at the northwest corner of Souder Avenue and McKinley Avenue in West Franklinton. The initial phase of the project includes 200,000 SF of Class A commercial office space and ancillary amenities at an estimated investment of \$100 million. The initial phase was completed in Summer 2021. The second phase of the project, which is expected to be completed in Fall 2022, will include an additional 200,000 SF of Class A commercial office space and one or more associated parking structures at an estimated investment of \$125 million.



FlightSafety International, the world's premier professional aviation training company and supplier of flight simulators, visual systems and displays, has announced plans to relocate its headquarters to Columbus, Ohio, investing \$3.1 million. The company is adding more than 100 new jobs in Columbus and retaining 32 employees. FlightSafety has more than 4,300 employees in the U.S., Canada, and overseas. Founded in 1951 as FlightSafety Inc., FlightSafety International delivers world-class professional training to operators of business and regional aircrafts and supplies flight simulators, visual systems, and displays to commercial, military, and government organizations. With learning centers located around the world, FlightSafety International offers more than 4,000 courses for pilots, technicians, flight attendants, and dispatchers and provides more than 1.4 million hours of training each year.



BBI Logistics, LLC was established in 2017 as a freight brokerage firm specializing in handling full truck load shipments while also dealing with a variety of other services such as less than truckload, intermodal, specialized equipment, and expediting shipments. The first employees ran all operations from a small startup office at Easton Town Center in Columbus, OH, and have grown to closing 2021 with \$150 million in revenue and more than 150 employees. BBI Logistics is proposing to invest over \$56 million on acquisition, construction, machinery, equipment, furniture, fixtures, and computers for its new headquarters in the Arena District. The HQ will be located at 66 W. Nationwide Boulevard though some operations will remain at 80 East Rich Street, Suite 200.



BBI LOGISTICS

lululemon usa, inc., headquartered in Sumner, WA, is a subsidiary of lululemon athletica, inc. and makes and distributes technical athletic clothes for yoga, running, working out, and most other sweaty pursuits. It has operated a regional hub and distribution center from Columbus since 2014 and plans to expand with the following major updates: 1) Existing Employee Restroom and Breakroom Expansion and Renovations within the existing building footprint, 2) Expanded Parking Lots onsite to support current and future staffing levels onsite, 3) Expansion of its building to add 176,000 SF including additional employee spaces such as Prayer Rooms, Meditation Rooms, Mother's Rooms, Training Spaces, and Open Office Areas, and 4) New Outdoor Covered Basketball Court for Warehouse Employees and the addition of two outdoor Patio Breakroom Spaces for staff. lululemon is proposing to invest a total project cost of approximately \$26,500,000, including \$22,000,000 in real property improvements to renovate approximately 15,000 SF of existing space and construct approximately 176,000 SF of new industrial and office space at 2200 Spiegel Drive, Columbus, Ohio 43125. The company anticipates that the development of the proposed project will lead to the retention of 209 employees with an approximate annual payroll of \$9,650,042 and the creation of 199 net new full-time permanent positions with an estimated annual payroll of approximately \$7,036,640 at the proposed Project Site.



Columbus Housing

The City of Columbus' housing market is booming with trendy and desirable neighborhoods, affordable housing options, and a thriving local economy. In Nationwide's Health of Housing Markets 2020 Q2 report, the Columbus housing market was ranked 35th nationwide.

Columbus is known for its vibrant, unique neighborhoods. Throughout the city, there are a variety of living options with many neighborhoods consisting of smaller communities within its borders. Residents are able to live in areas that range from historically preserved German Village, to the popular Short North, or newly developed downtown condominiums.



Housing Quick Facts

Housing Units 415,456

Persons per Household

COLUMBUS 2.4

National Average 2.6

Ownership Rate

COLUMBUS 44.9%

National Average 64.4%

Median Home Value

COLUMBUS \$160,000

National \$229,800

Median Monthly Mortgage

COLUMBUS \$1,345

National \$1,621

Median Monthly Rent

COLUMBUS \$989

National \$1,096

Source: U.S. Census Bureau, 2020 American Community Survey
1-Year Estimates



Columbus Fun

Columbus is home to many renowned facilities, including the nationally ranked Columbus Zoo and Aquarium, COSI, and Columbus Metropolitan Libraries. Organizations such as the Columbus Symphony, Columbus Jazz Orchestra, and Opera Columbus provide year-round opportunities for live music performances.



Arts & Cultural Attractions

BalletMet
CATCO
Center of Science & Industry (COSI)
Columbus Children's Theatre
Columbus Cultural Arts Center
Columbus Jazz Orchestra
Columbus Museum of Art
Columbus Symphony Orchestra
Columbus Zoo & Aquarium
Franklin Park Conservatory
The King Arts Complex
Lincoln Theatre
Ohio History Connection
Ohio Theatre
Opera Columbus
Palace Theatre
Shadowbox Theatre
Short North Arts District

Entertainment Venues



Sports Teams



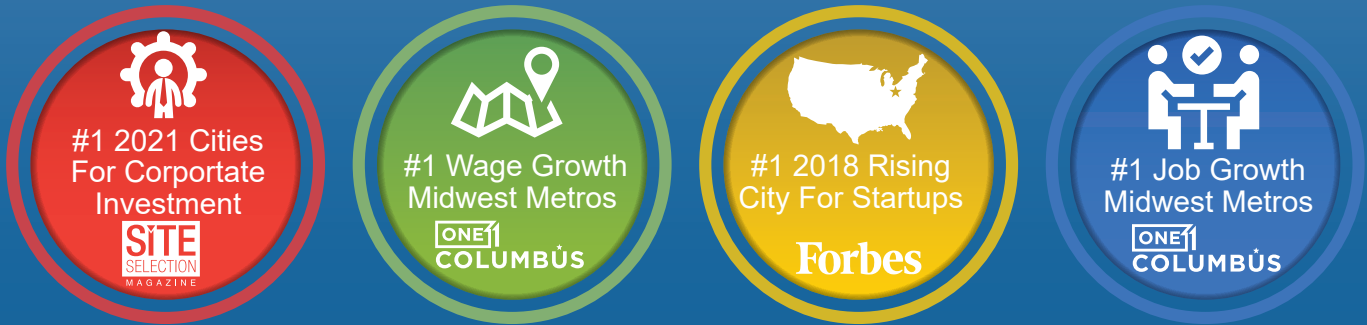
Events and Activities in Columbus

Patrons of performing arts and theater find plenty to see in the offerings of local companies such as BalletMet, CATCO (Contemporary American Theatre Company), and the Columbus Children's Theatre. The city offers an exciting array of entertainment with special events, sporting events, and popular festivals throughout the year.



COLUMBUS RANKINGS

#1 Rankings



Top 10 Rankings



Community Profile

This page has been intentionally left blank.