



Department Description

Governed by a five member Board of Health, Columbus Public Health (CPH) works to protect the Columbus community from disease and other public health threats by ensuring that all residents and visitors are empowered to live healthier, safer lives. Columbus Public Health offers more than 40 diverse programs in environmental, neighborhood, family, population, clinical health, sexual health promotion, and addiction services.

Department Mission

To protect health and improve lives in our community.

Columbus Public Health protects, promotes, and monitors the health of the public by:

- Assuring compliance with public health laws, mandates, and regulations;
- Establishing policies to address health issues and emerging health threats;
- Providing preventative, environmental, community, clinical, and home-based services.

Diverse **clinical and family health services** are provided to Columbus residents including women's health, family planning, sexual health and wellness, immunizations, health screenings, infant health, dental care, and many others. In recent years, the department also has been a community leader in efforts to address infant mortality, violent crime, the opiate crisis, the COVID-19 pandemic, and most recently monkeypox.

The **sexual health promotion** division seeks to prevent HIV and other sexually transmitted infections (STI) through education, testing, and treatment. Promoting sexual health requires disease identification, and investigation and treatment, which needs to address both the medical and social circumstances related to health. Sexual health promotion also contributes to the development of best practices through specialized HIV and STI evaluation programs in collaboration with state and federal partners.

Budget Summary				
Fund	2020 Actual	2021 Actual	2022 Budget	2023 Proposed
Health Operating Fund	28,031,999	37,419,256	41,666,663	42,261,618
Department Total	\$ 28,031,999	\$ 37,419,256	\$ 41,666,663	\$ 42,261,618

Public Health

Columbus Public Health's **addiction services** provides programs, activities and treatment services related to drug and alcohol addiction, and oversight and coordination of the Columbus and Franklin County Addiction Plan, a collaborative community response addressing the opioid crisis. The department identifies the resources needed to effectively implement the action plan, and manages and coordinates addiction services including prevention, treatment, and harm reduction.

The department also works to prevent or reduce risks from environmental hazards. **Environmental health** programs seek to prevent disease or injury associated with food, water, air, animals, vectors, hazardous materials, and hazardous waste.

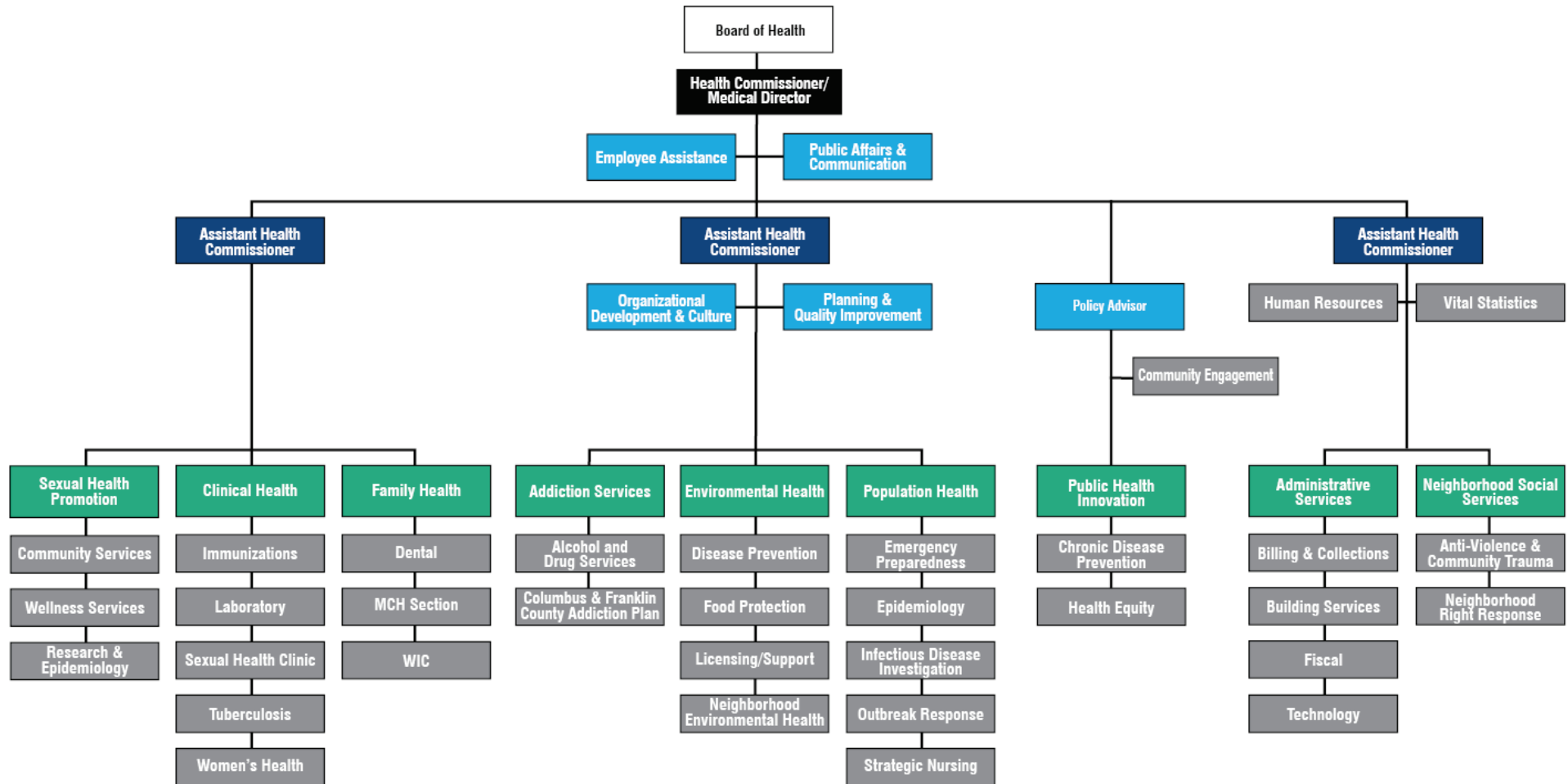
Within the **population health** area and through the **Office of Epidemiology**, CPH helps to improve the health of the Columbus community by gathering and studying health-related data and information to make informed decisions about community health policy, planning and programming. The **Office of Emergency Preparedness** analyzes health indicators, investigates infectious diseases, and implements public health interventions when needed.

The **Center for Public Health Innovation** has been tasked with raising life expectancy and improving quality of life by reducing health inequities with a focus on racism as a public health crisis. The Center brings community voices to CPH services with participatory planning strategies, increases organizational and community capacity to advance equity, and develops policies that can dismantle structural racism and improve the health of all.

Finally, **Neighborhood Social Services** continues to grow its programming to include community trauma support and anti-violence prevention. CPH provides social workers in the 911 Call Center to assist Columbus Police and Fire dispatchers to respond appropriately to non-violent calls. The Mobile Crisis Response Team, now includes CPH Social Workers and Columbus Police who respond to immediate mental health emergencies. Neighborhood Social Services also provides community support to residents on housing, food insecurity, and access to various community needs agencies.



Public Health



2023 BUDGET NOTES

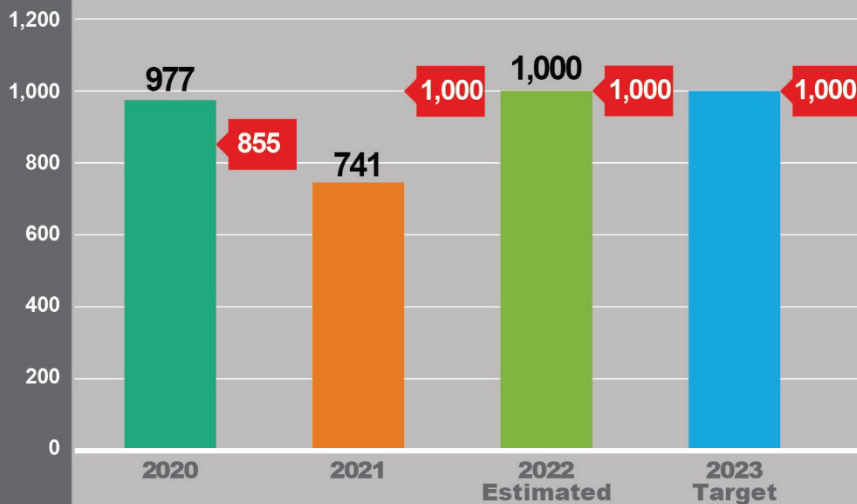
The 2023 budget for Columbus Public Health allows for continued provision of public health services that are mandated, services that meet the Mayor's strategic priorities, and a variety of programs that the Board of Health deems essential. In addition:

- Neighborhood Social Services, created in 2022, continues funding with a budget of more than \$5 million. This program, which encompasses the CARE Coalition, Violence Intervention, Violent Crime Review Group, Community Right Response, Right Response Dispatch, and Neighborhood Social Work focuses on community trauma support and hospital based violence intervention; community based violence reduction programs focusing on geographical location and at-risk individuals for violence; community based teams who follow up on 911 calls; 911 Dispatch Center teams that triage calls to assess for proper response based on acuity of the call; and, a community based team working directly with residents on housing, food insecurity, and access to various community needs agencies.
 - The Health Department continues to focus on sexual health services and promotion. For 2023, this area is budgeted at \$362,008.
 - Total combined funding of \$1,758,242 is provided to continue to address heroin and opiate use as part of the Columbus and Franklin County Addiction Plan. The Safe Point Program continues to be funded at \$350,000 and provides Naloxone access, addiction counseling, treatment referrals, infectious disease screenings and linkage to care, and prevention education. In addition, medication assisted treatment services funding remains at the same level as 2022.
 - Continued funding is included in the 2023 budget to support the infant mortality initiative, CelebrateOne, including funding for Pre- and Post-Natal Evidence Based Home Visiting services to provide wrap-around social and nursing support to more women and babies in an effort to help reduce infant deaths. More information on CelebrateOne can be found in the Office of CelebrateOne's budget section.
 - Continued support for PrimaryOne, formerly known as the Community Neighborhood Health Centers (CNHC), in the amount of \$4.3 million is included to provide access to care and to address health concerns at multiple health centers.
 - The department continues to assist Columbus Public Schools by contracting with the district to provide general consultation and input on school health procedures and protocols, and to contract with and receive revenue from the City of Worthington to provide public health consultation and assistance in matters of public health.
-

PERFORMANCE MEASURES

Safe Sleep Ambassadors

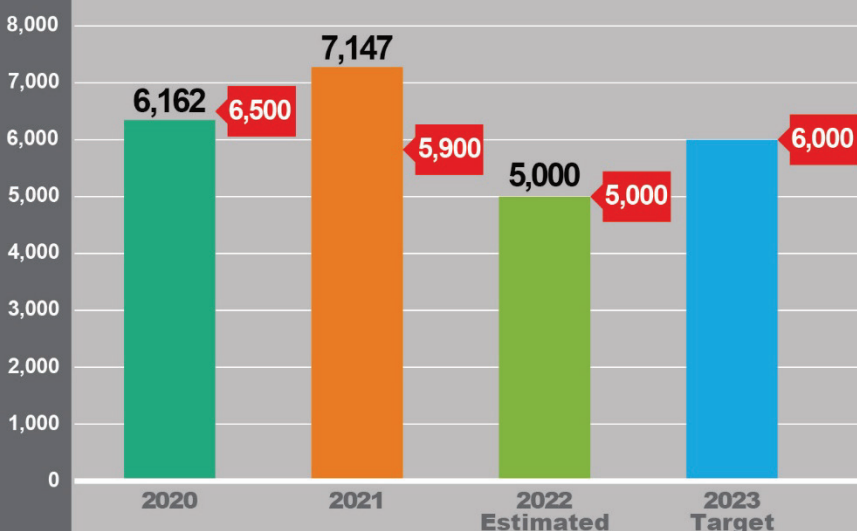
Number of new Safe Sleep Ambassadors trained



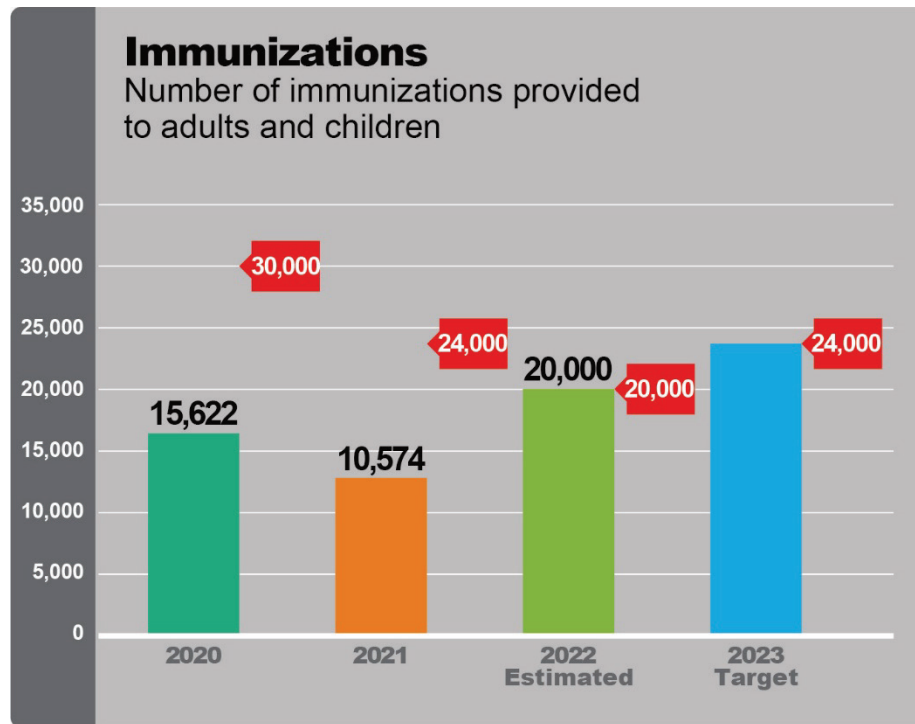
The CPH Infant Safe Sleep Program, in collaboration with CelebrateOne, developed the Safe Sleep Ambassador and Safe Sleep Ally trainings. Sleep-related infant deaths are mostly preventable and are a leading cause of death for babies from birth to one year of age. Trained Safe Sleep Ambassadors and Allies share the ABC's of safe sleep with their friends, family, co-workers, neighbors, community groups, and parents and caregivers of babies under age 1. A transition to virtual training was implemented in April 2020 in response to COVID-19 restrictions. CPH projects that training of 1,000 ambassadors will occur in 2022 and will continue that target into 2023.

Home Visits

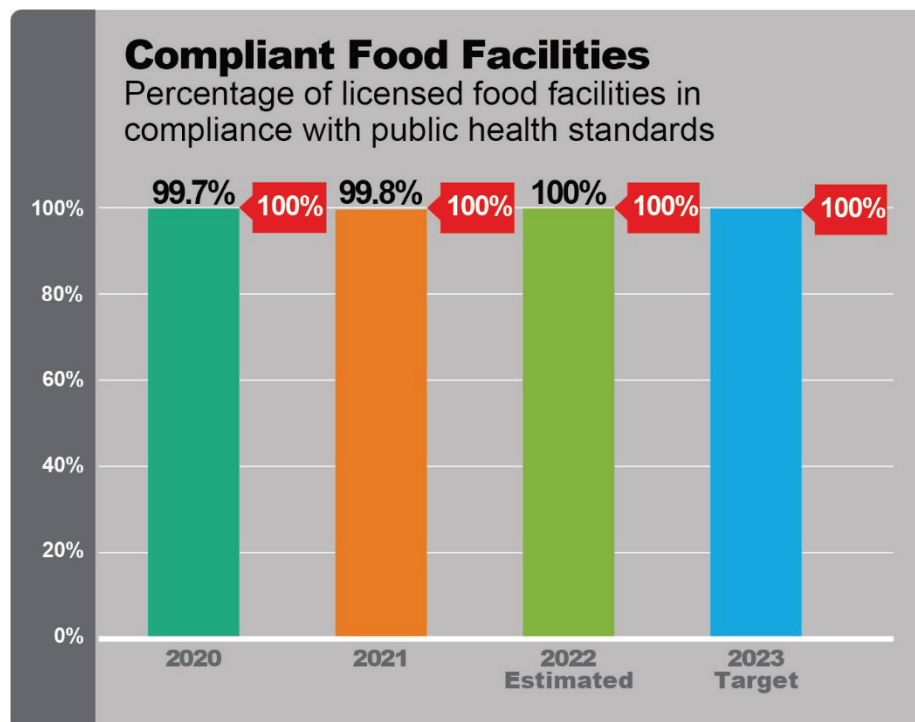
Number of prenatal, newborn and child home visits completed



CPH Maternal Child Health Home Visiting Programs provide community outreach, and in-home, family-centered care coordination, education and support to pregnant and parenting women with very young children. All services are voluntary and at no cost to the client. The 2021 actual visits were higher than projected due to the ability to provide telehealth visits due to COVID-19. CPH estimates that 5,000 home visits will occur in 2022 which is based on the numbers of visits completed in first 6 months of this year. Since most staff have returned to in-person home visitation full time, CPH estimates that home visits numbers for 2023 will trend closer to 6,000 visits completed. Variables that could affect the number of home visits include staff transitions, hiring, and staff assistance with Monkeypox ICS response.



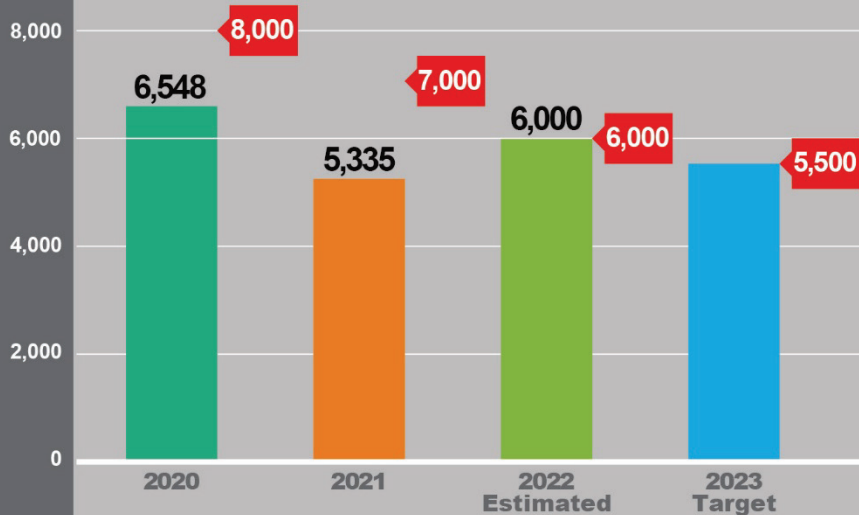
Providing routine childhood and adult immunizations is a top priority in protecting the health of residents by reducing the spread of vaccine-preventable illnesses such as measles and pertussis (whooping cough). Reports nation-wide show that child-hood vaccinations levels were adversely affected by the COVID-19 pandemic closures. Hence, extra outreach efforts will be needed to bridge the vaccine coverage gaps created. CPH is estimating it will provide about 24,000 vaccinations in 2023. This figure is 140% above the 2021. The 2023 target of 24,000 assumes clinic operations will continue uninterrupted and visits will return to pre-pandemic levels. In response to the pandemic, CPH administered 222,919 doses of the COVID vaccine. This effort pulled staff from program areas throughout the health department.



Columbus Public Health's (CPH) Food Protection Program inspects and safeguards Food Service Operations and Retail Food Establishments for residents of Columbus and Worthington. CPH consistently meets its compliance standards. Food Service Operations and Retail Food Establishments not in compliance are under enforcement by CPH to address violations. The 2022 estimate and 2023 target for this measure will continue at 100% of food facilities in compliance with public health standards, to ensure the continued safety of Columbus residents.

Pesticide Applications

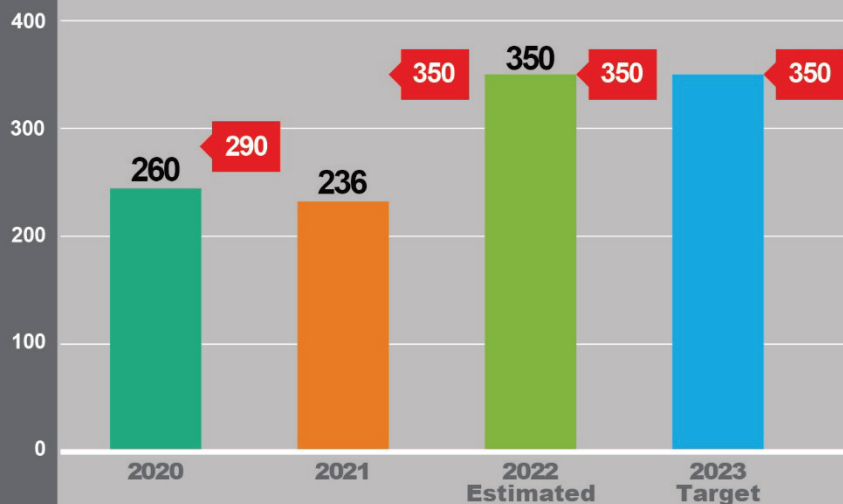
Number of pesticide applications made to stagnant water sites



The Vector Control Program conducts larviciding each year to prevent mosquitoes from developing into adults where they can then transmit disease. This is accomplished by treating standing water (larviciding) which includes: rain barrel treatment, catch basin treatment, historic mosquito breeding sites being treated, identification and treatment of new mosquito breeding sites, and complaint investigations in which standing water may be observed and treated. Mosquito control is very weather dependent. It is dependent on if the assessments of the potential breeding grounds are actually breeding when CPH staff investigates.

Baby & Me Tobacco Free Clients

Number of maternal health clients who are smoke-free by first post partum visit



The Baby and Me Tobacco Free program at CPH is the only evidence-based smoking cessation program specifically tailored for pregnant women and their families in Franklin County. It aims to increase smoking cessation rates among pregnant and postpartum women to improve birth outcomes and infant and maternal health. In 2020, Baby and Me Tobacco Free implemented telehealth services, which allowed for continued programming throughout the COVID-19 pandemic. The numbers were slightly affected due to staff shortages and reassignments due to the pandemic. By the end of 2022, the program aims to maintain participation at 350 smoke-free clients.

Public Health

Financial Summary by Area of Expense										
Division	2020		2021		2022	2022	2023			
	Actual		Actual		Budget	Projected	Proposed			
Health										
Health Operating Fund										
Personnel	\$	20,030,627	\$	25,819,254	\$	31,244,837	\$	26,945,670	\$	31,977,838
Materials & Supplies		802,572		1,346,754		1,277,230		1,541,559		1,450,977
Services		6,933,661		9,958,086		9,112,596		8,384,875		8,800,803
Other		226,240		10,161		32,000		-		32,000
Capital		38,899		285,000		-		56,082		-
Transfer		-		-		-		381,627		-
Health Operating Fund Subtotal		28,031,999		37,419,256		41,666,663		37,309,813		42,261,618
Department Total	\$	28,031,999	\$	37,419,256	\$	41,666,663	\$	37,309,813	\$	42,261,618

Department Personnel Summary								
Fund	2020 Actual		2021 Actual		2022 Budget		2023 Proposed	
	FT	PT	FT	PT	FT	PT	FT	PT
Health Operating Fund								
Administration	240	18	253	32	317	40	330	18
Total	240	18	253	32	317	40	330	18

Operating Budget by Program					
Program	2022 Budget	2022 FTEs	2023 Proposed	2023 FTEs	
Health Administration	\$ 11,128,152	50	\$ 10,466,623	51	
Fiscal	582,722	5	781,853	6	
Human Resources	1,006,740	9	1,078,588	9	
Internal Services	467,837	0	474,004	0	
Center for Public Health Innovation	2,587,011	22	2,913,936	25	
Clinical Health	5,123,417	41	4,786,159	37	
Population Health	3,963,651	32	4,384,117	41	
Environmental Health	6,182,876	65	6,537,388	66	
Family Health	4,228,890	33	3,711,140	38	
Opiate Initiatives	1,524,434	9	1,758,242	12	
Addictive Services	5,000	0	-	0	
Sexual Health Promotion	488,058	5	362,008	3	
COVID-19	165,111	2	-	0	
Neighborhood Social Services	4,212,764	44	5,007,560	43	
Department Total	\$ 41,666,663	317	\$ 42,261,618	330	

For additional financial information related to the Health Department, please refer to the health operating fund contained within the Special Revenue section. Program descriptions begin on the following page.



2023 PROGRAM GUIDE

HEALTH ADMINISTRATION

To provide leadership and direction for the department, administrative and support services in the areas of information systems and facilities management, and to monitor and document the department and community health status regarding state and national public health standards. The City of Columbus Employee Assistance Program is located at Columbus Public that provides confidential counseling services for all City employees and significant others.

FISCAL

To provide administrative and support services in the area of fiscal management.

HUMAN RESOURCES

To provide administrative and support services in the area of human resource management.

INTERNAL SERVICES

To account for the internal service charges of the department necessary to maintain operations.

CENTER FOR PUBLIC HEALTH INNOVATION

To provide innovation that raises life expectancy and improves quality of life by reducing health inequities with a focus on racism as a public health crisis. The Center works to: bring in community voices to CPH services with participatory planning strategies; increase organizational and community capacity to advance equity; and, develop policy that can dismantle structural racism and improve the health of all. This work is achieved through the use of data to evaluate community health needs and then evaluation to determine project effectiveness.

CLINICAL HEALTH

To provide clinical services to the public including immunizations, women's health, family planning, sexual health and wellness, and tuberculosis services.

POPULATION HEALTH

To prevent and/or reduce morbidity and mortality associated with public health threats by analyzing health indicators, investigating infectious diseases, and implementing public health interventions.

ENVIRONMENTAL HEALTH

To reduce the number of food-borne illnesses in Columbus and Franklin County, inspect and license swimming pools, spas, and water systems, provide inspections for hazardous waste and underground storage tanks, conduct animal bite investigations, monitor and control mosquito and rodent populations, and evaluate and reduce lead poisoning in the community.

FAMILY HEALTH

To provide public health nursing and social work home visiting services to residents in need of social support linkages with community resources, to reduce death and preventable injuries to children aged 14 and under, to provide basic and preventive dental clinical services to Franklin County families who are unable to access dental services due to cost, and to prevent tooth decay through a mobile dental sealant program for low income families in Columbus.

ALCOHOL AND DRUG SERVICES

Encompassing **Addiction Services** to account for the costs associated with the prevention and treatment of alcohol and drug abuse and addiction, and **Opiate Initiatives** to account for the costs associated with the prevention and treatment of opioid abuse.

SEXUAL HEALTH PROMOTION

To prevent HIV and other sexually transmitted infections (STI) through education, testing and treatment.

COVID - 19

To account for the expenses necessary to address the COVID-19 pandemic.

NEIGHBORHOOD SOCIAL SERVICES

To provide neighborhood social services programs, including; community trauma support and hospital based violence intervention; community based violence reduction programs focusing on geographical location and at-risk individuals for violence; community based teams who follow up on 911 calls; 911 Dispatch Center teams that triage calls to assess for proper response based on acuity of the call; and, a community based team working directly with residents on housing, food insecurity and access to various community needs agencies.

This page has been left intentionally blank.