

PLAN VIEW

PAD AND APPROACH APRON

NOTES

WHEN DUMPSTERS ARE LOCATED SIDE-BY-SIDE, AN ADDITIONAL 10' W X 10' L DUMPSTER PAD AND APRON IS REQUIRED. DUMPSTERS SHALL NOT BE DOUBLE STACKED.

THE BULK ENCLOSURE SHALL CONSIST OF A CONCRETE PAD, APPROACH APRON, AND SCREENING. THE CONCRETE PAD SHALL BE A MINIMUM OF 10'X10' AND A MAXIMUM OF 20'X20' FOR EACH ENCLOSURE.

BULK / DUMPSTER ENCLOSURE

CITY OF COLUMBUS, OHIO
DEPARTMENT OF PUBLIC SERVICE
DIVISION OF DESIGN AND CONSTRUCTION

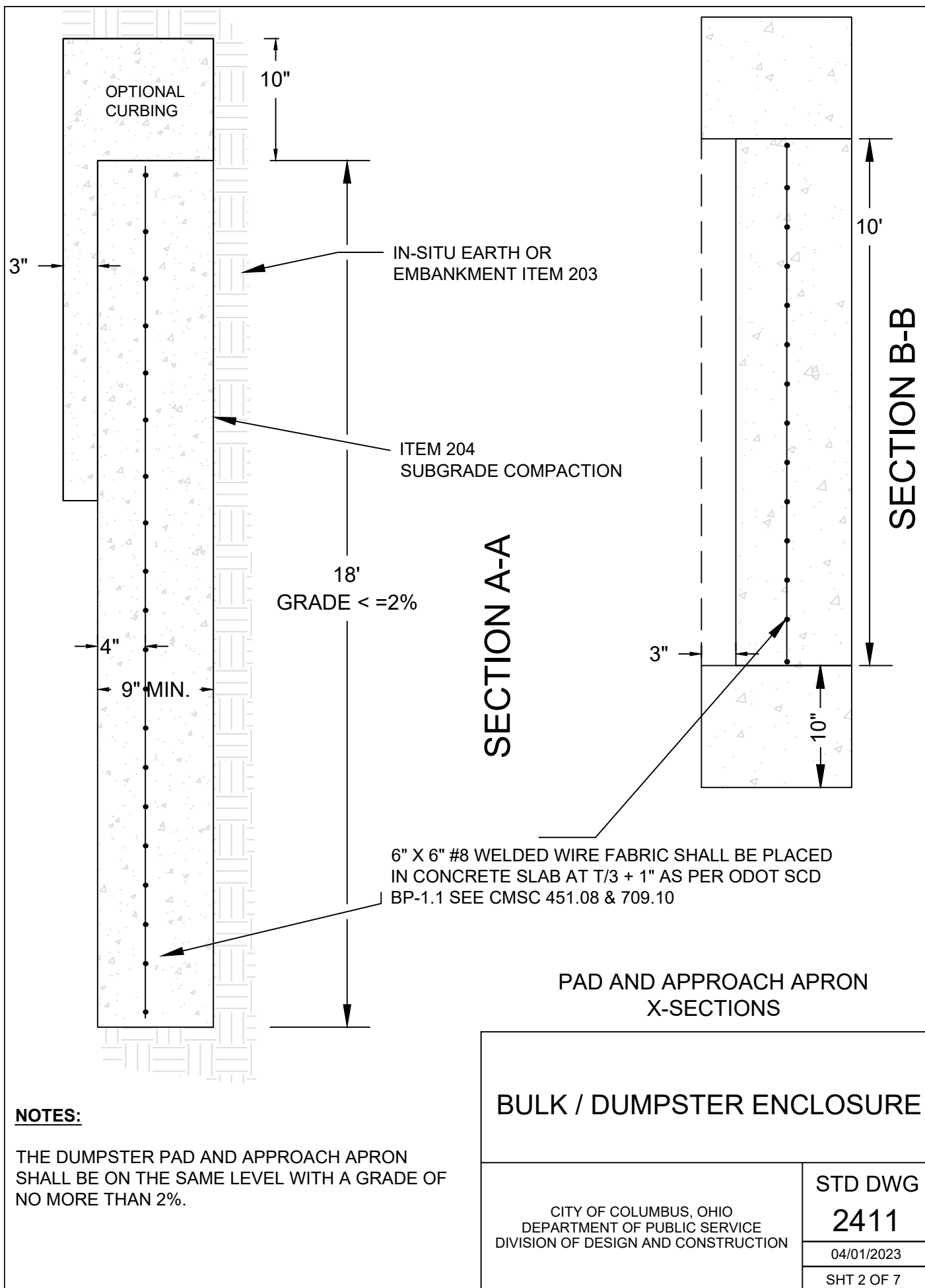
CITY ENGINEER

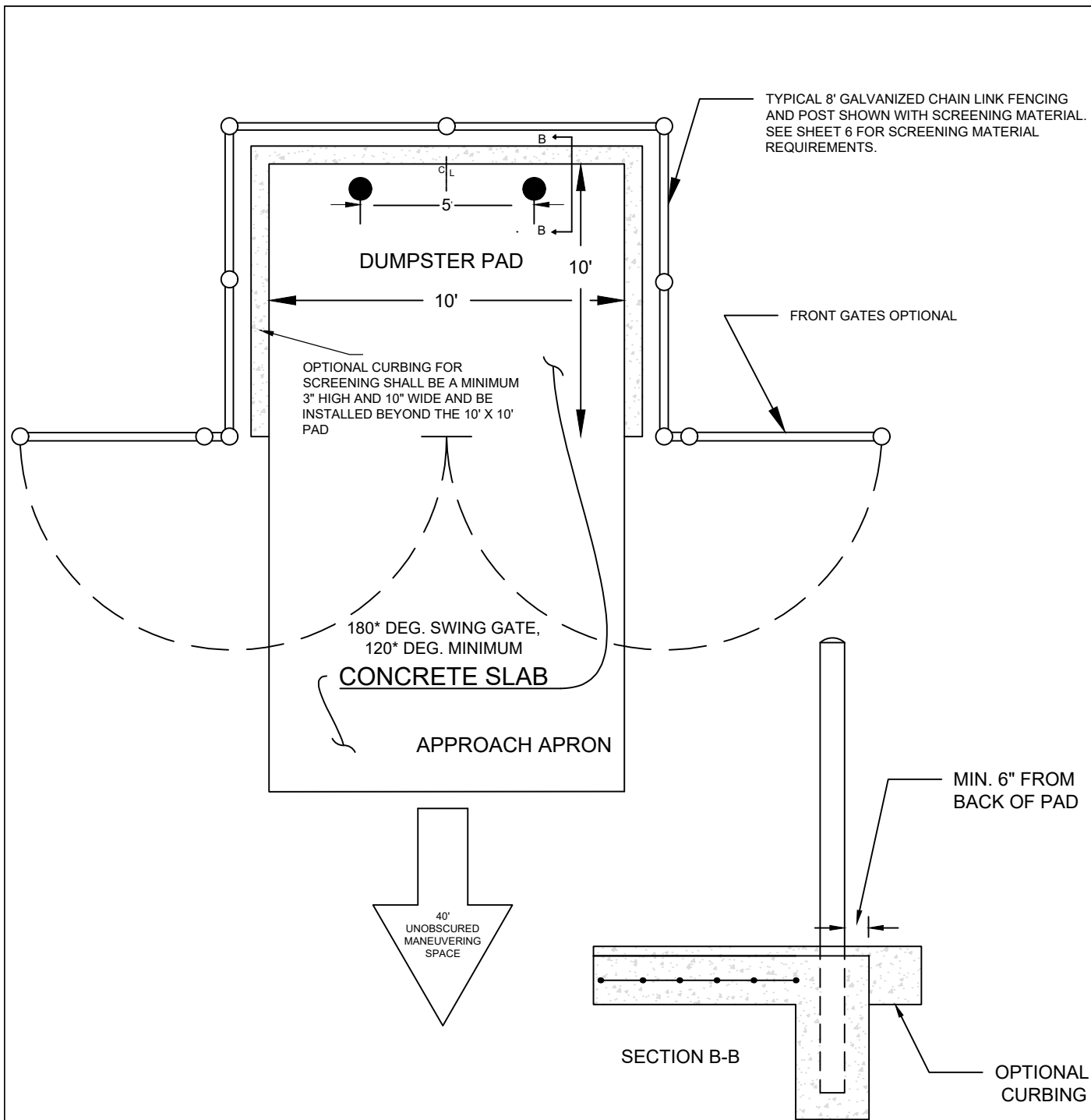
STD DWG

2411

04/01/2023

SHT 1 OF 7





SCREENING

NOTES:

A 40' MINIMUM MANEUVERING SPACE SHALL BE LOCATED DIRECTLY BEYOND THE APPROACH APRON. THE AREA SHALL BE MARKED AND SHALL REMAIN VACANT.

THE SLOPE OF THE ROADWAY APPROACH TO THE DUMPSTER PAD / APRON SHALL NOT EXCEED TWO PERCENT (2%).

ENCLOSURE GATES, WHEN USED, SHALL CONSIST OF (2) TWO SWING OUT GATES, SINGLE GATE NOT PERMITTED, MOUNTED TO THE OUTSIDE OF THE POSTS THAT OPEN A MINIMUM OF 120 DEGREES.

GATES SHALL HAVE CANE PINS MOUNTED ON THEM AND HOLES IN THE PAVEMENT (MINIMUM 6" DEPTH) TO RECEIVE PINS WHEN THE GATES ARE IN THE OPEN AND CLOSED POSITION. SEE SHEET 6 FOR GATE STOP DETAIL.

BULK / DUMPSTER ENCLOSURE

CITY OF COLUMBUS, OHIO
DEPARTMENT OF PUBLIC SERVICE
DIVISION OF DESIGN AND CONSTRUCTION

STD DWG

2411

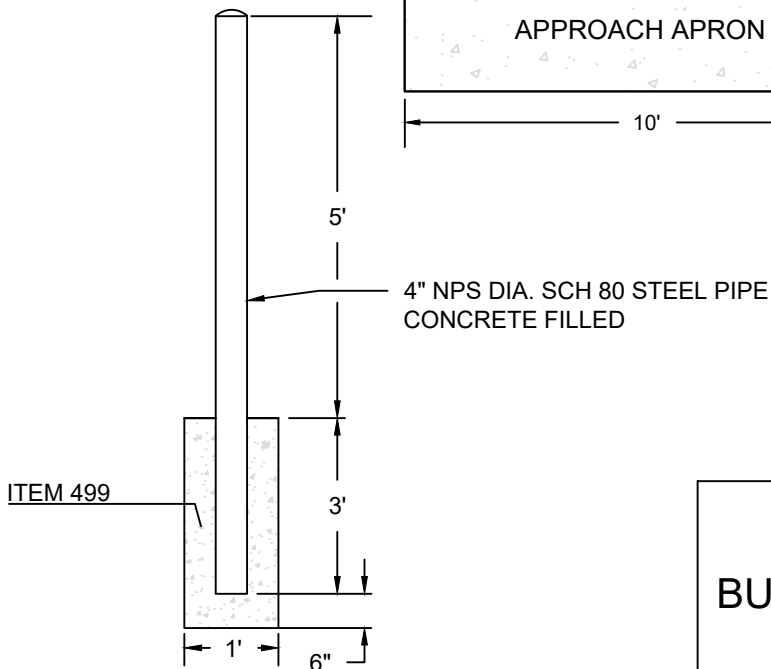
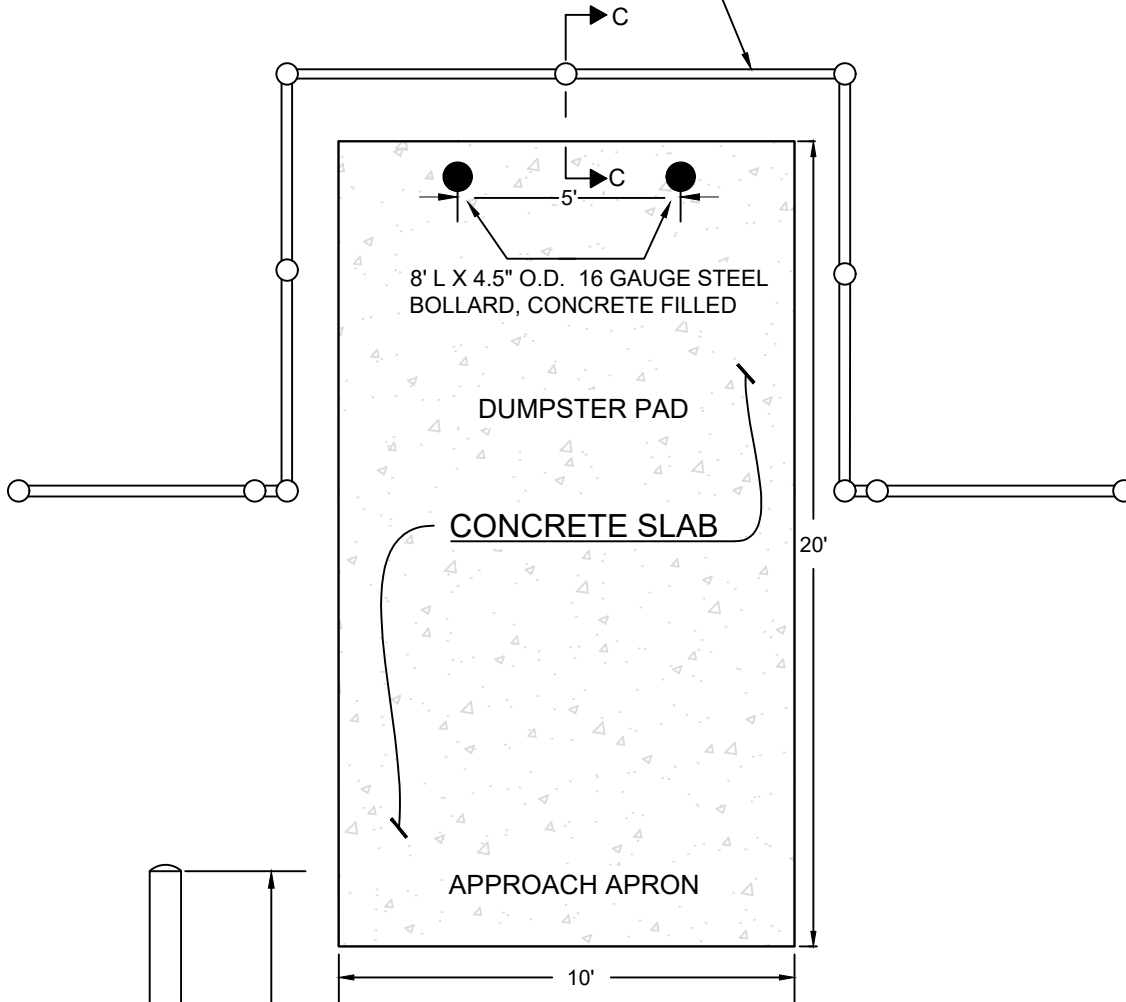
04/01/2023

SHT 3 OF 7

IF OPTIONAL CURBING, CONCRETE BLOCK OR BRICK WALL IS PLACED AGAINST CONCRETE PAD, BOLLARDS ARE PLACED A MINIMUM 6' FROM EDGE OF PAD.

SEE SHEET 6 FOR SECTION C-C BOLLARD WITH SCREENING DETAIL

SCREENING:
SEE SHEET 6 FOR SCREENING MATERIAL REQUIREMENTS
CHAIN LINK FENCE AND POSTS SHOWN AS EXAMPLE



BOLLARD INSTALLATION

BOLLARDS

BULK / DUMPSTER ENCLOSURE

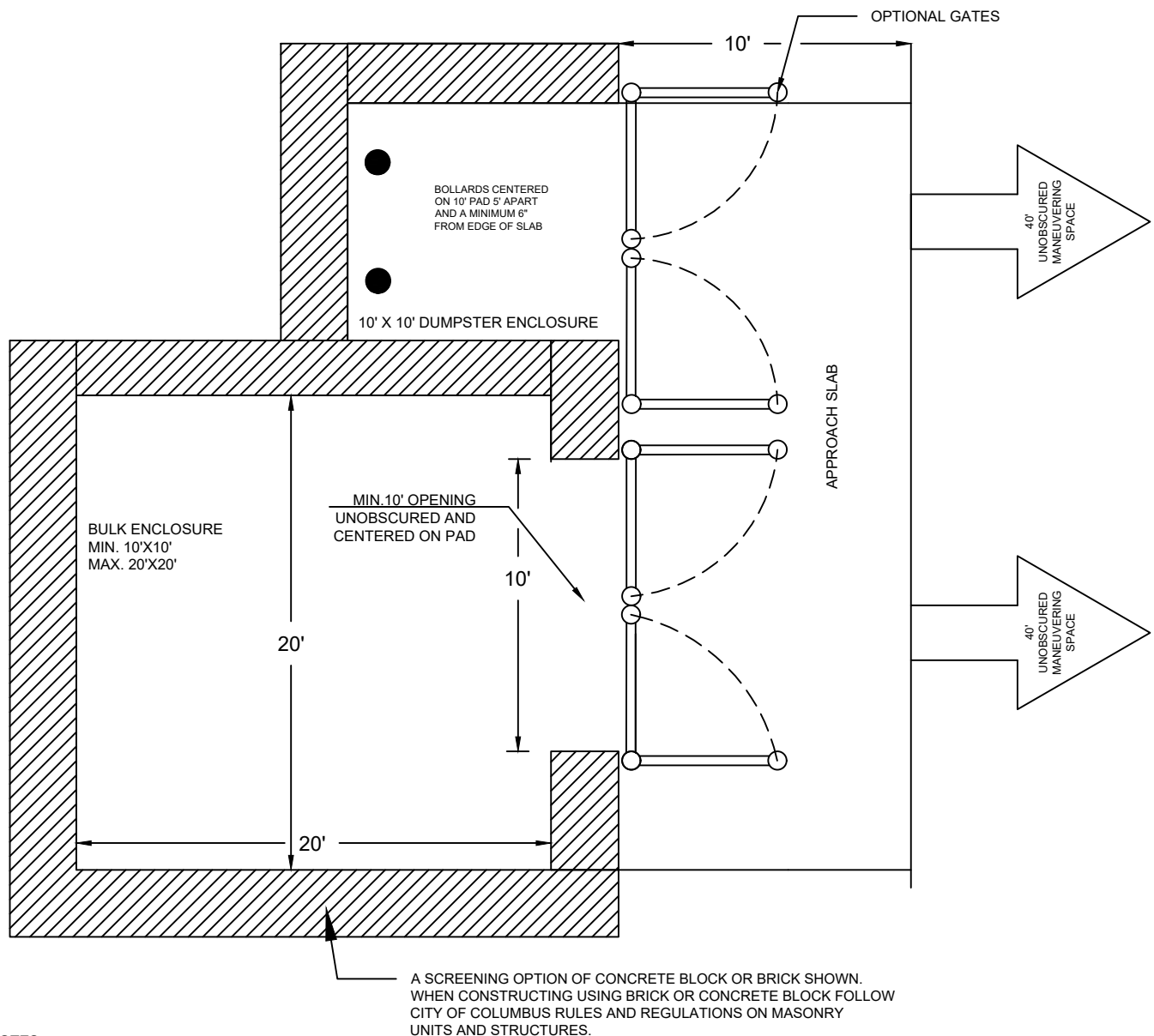
CITY OF COLUMBUS, OHIO
DEPARTMENT OF PUBLIC SERVICE
DIVISION OF DESIGN AND CONSTRUCTION

STD DWG

2411

04/01/2023

SHT 4 OF 7



NOTES:

THE BULK ENCLOSURE SHALL CONSIST OF A CONCRETE PAD, APPROACH APRON, AND SCREENING. THE CONCRETE PAD SHALL BE A MINIMUM OF 10'X10' AND A MAXIMUM OF 20'X20' FOR EACH ENCLOSURE.

ALL SCREENING REQUIREMENTS SHALL BE INSTALLED BEYOND THE MINIMUM 10'X10' PAD. THE PAD SHALL BE FULLY SCREENED FROM VIEW ON THREE SIDES. SCREENING CAN CONSIST OF GALVANIZED CHAIN LINK WITH SCREENING, PRIVACY WOOD OR VINYL FENCING, CONCRETE BLOCK OR BRICK. SCREENING SHALL NOT INCLUDE LIVE VEGETATION AND PLANTINGS.

THE OPENING FOR EACH ENCLOSURE SHALL BE A MINIMUM OF 10' CENTERED ON THE PAD AND FREE FROM ALL OBSTRUCTIONS INCLUDING OVERHEAD.

THE CONCRETE PAD AND APRON SHALL BE CONSTRUCTED OF PORTLAND CEMENT CONCRETE AND SHALL BE A MINIMUM OF NINE (9) INCHES THICK REINFORCED WITH WELDED WIRE MESH SIX (6) BY SIX (6) INCH, NUMBER EIGHT (8) MESH. SEE SHEET 2 FOR WELDED WIRE PLACEMENT.

A 40' MINIMUM UNOBSCURED MANEUVERING SPACE SHALL BE LOCATED DIRECTLY BEYOND THE APPROACH APRON FOR EACH ENCLOSURE. THE AREA SHALL BE MARKED AND SHALL REMAIN VACANT.

IF OPTIONAL CURBING, CONCRETE BLOCK OR BRICK WALL IS PLACED AGAINST THE CONCRETE PAD, BOLLARDS ARE PLACED A MINIMUM 6' FROM EDGE OF PAD.

BULK ENCLOSURE WITH SEPARATED DUMPSTER

DUAL ENCLOSURE

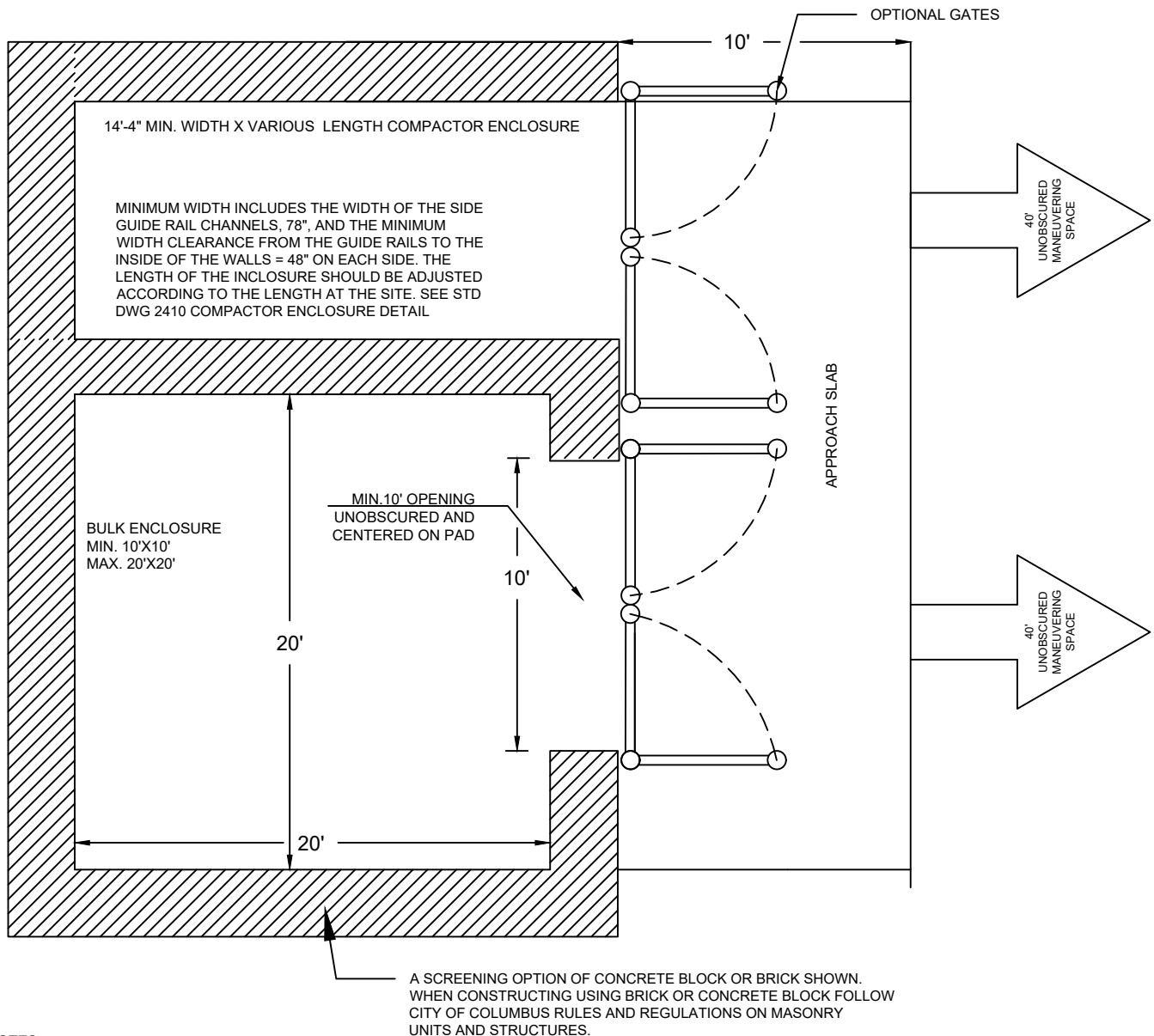
CITY OF COLUMBUS, OHIO
DEPARTMENT OF PUBLIC SERVICE
DIVISION OF DESIGN AND CONSTRUCTION

STD DWG

2411

04/01/2023

SHT 5 OF 7



NOTES:

THE BULK ENCLOSURE SHALL CONSIST OF A CONCRETE PAD, APPROACH APRON, AND SCREENING. THE CONCRETE PAD SHALL BE A MINIMUM OF 10'X10' AND A MAXIMUM OF 20'X20' FOR EACH ENCLOSURE.

ALL SCREENING REQUIREMENTS SHALL BE INSTALLED BEYOND THE MINIMUM 10'X10' PAD. THE PAD SHALL BE FULLY SCREENED FROM VIEW ON THREE SIDES. SCREENING CAN CONSIST OF GALVANIZED CHAIN LINK WITH SCREENING, PRIVACY WOOD OR VINYL FENCING, CONCRETE BLOCK OR BRICK. SCREENING SHALL NOT INCLUDE LIVE VEGETATION AND PLANTINGS.

THE OPENING FOR EACH ENCLOSURE SHALL BE A MINIMUM OF 10' CENTERED ON THE PAD AND FREE FROM ALL OBSTRUCTIONS INCLUDING OVERHEAD.

THE CONCRETE PAD AND APRON SHALL BE CONSTRUCTED OF PORTLAND CEMENT CONCRETE AND SHALL BE A MINIMUM OF NINE (9) INCHES THICK REINFORCED WITH WELDED WIRE MESH SIX (6) BY SIX (6) INCH, NUMBER EIGHT (8) MESH. SEE SHEET 2 FOR WELDED WIRE PLACEMENT.

A 40' MINIMUM UNOBSCURED MANEUVERING SPACE SHALL BE LOCATED DIRECTLY BEYOND THE APPROACH APRON FOR EACH ENCLOSURE. THE AREA SHALL BE MARKED AND SHALL REMAIN VACANT.

IF OPTIONAL CURBING, CONCRETE BLOCK OR BRICK WALL IS PLACED AGAINST THE CONCRETE PAD, BOLLARDS ARE PLACED A MINIMUM 6' FROM EDGE OF PAD.

BULK ENCLOSURE WITH SEPARATED COMPACTOR

DUAL ENCLOSURE

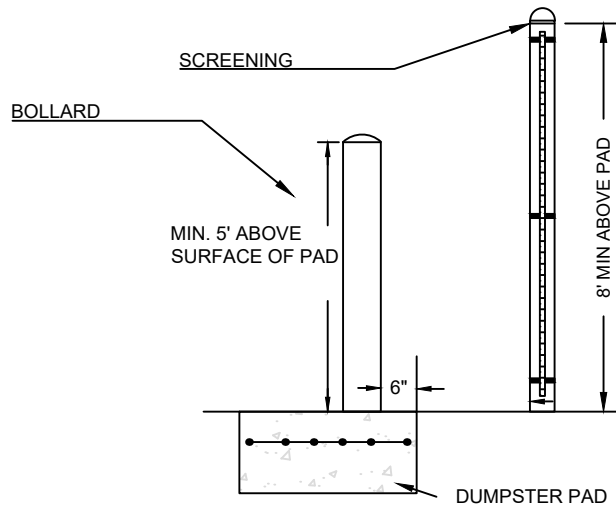
CITY OF COLUMBUS, OHIO
DEPARTMENT OF PUBLIC SERVICE
DIVISION OF DESIGN AND CONSTRUCTION

STD DWG

2411

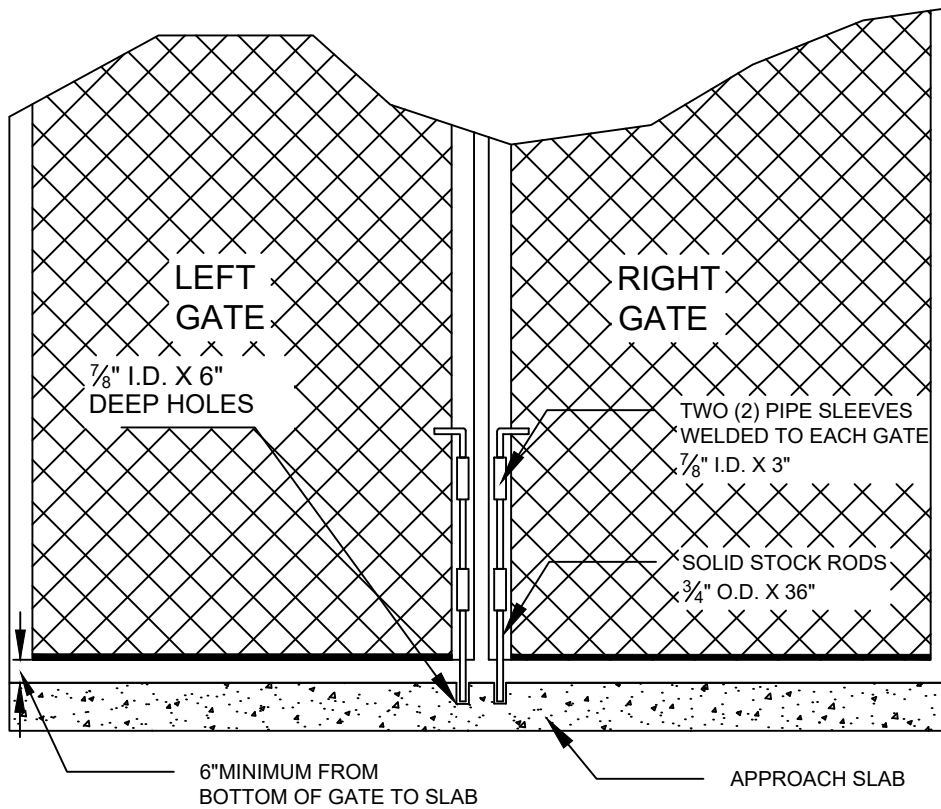
04/01/2023

SHT 6 OF 7



BOLLARD AND FENCE SCREENING POST
FOUNDATIONS NOT SHOWN FOR CLARITY

SECTION C-C BOLLARD WITH SCREENING



GATE STOP DETAIL

DETAILS

ENCLOSURE

CITY OF COLUMBUS, OHIO
DEPARTMENT OF PUBLIC SERVICE
DIVISION OF DESIGN AND CONSTRUCTION

STD DWG

2411

04/01/2023

SHT 7 OF 7