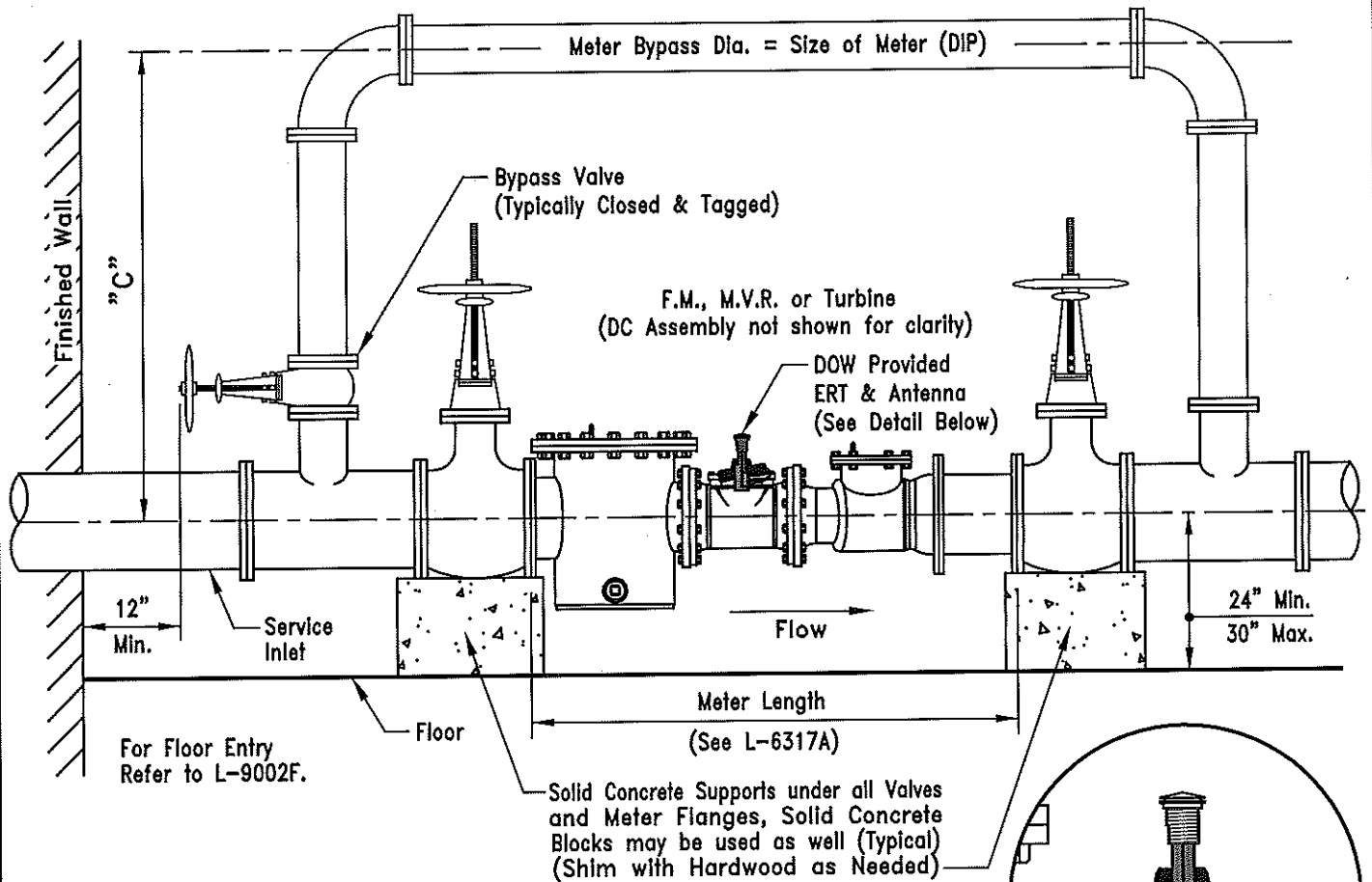


Note:  
No Tees or Meter Bypass permitted for DCDA/RPDA Settings.



CLEARANCE REQUIRED "C"			
METER SIZE	Turbine	FM w/ Turbine	WALL CLEARANCE
2"	33"	N/A	18"
3"	42"	48"	18"
4"	45"	52"	18"
6"	54"	60"	24"
8"	N/A	70"	24"
10"	N/A	78"	24"
10" X 12"	N/A	86"	24"

### WALL CLEARANCE

Wall clearance is defined as the shortest distance from a meter or piping surface to any wall or other obstacle behind the meter and shall be maintained throughout the meter setting from inlet valve to outlet valve. A 24" minimum clearance shall be maintained in front of the meter to ensure adequate access for reading and repairs.

### VALVING

2" Valves shall be of bronze construction and either gate valves with rising stems and wheel handles or ball valves with lever handles (drilled for sealing wire). Valves 3" and larger shall be gate valves with outside screw and yoke assemblies (O.S.&Y.).

L-6317C.dwg Revision Date: 4/24/13

CITY OF COLUMBUS  
DEPARTMENT OF PUBLIC UTILITIES  
DIVISION OF WATER

APPROVED:  
*R.C. Westerfield* 5-14-13  
ADMINISTRATOR DATE

STANDARD DETAIL  
INSIDE BUILDING METER SETTING  
2" THRU 10" x 12" METERS

