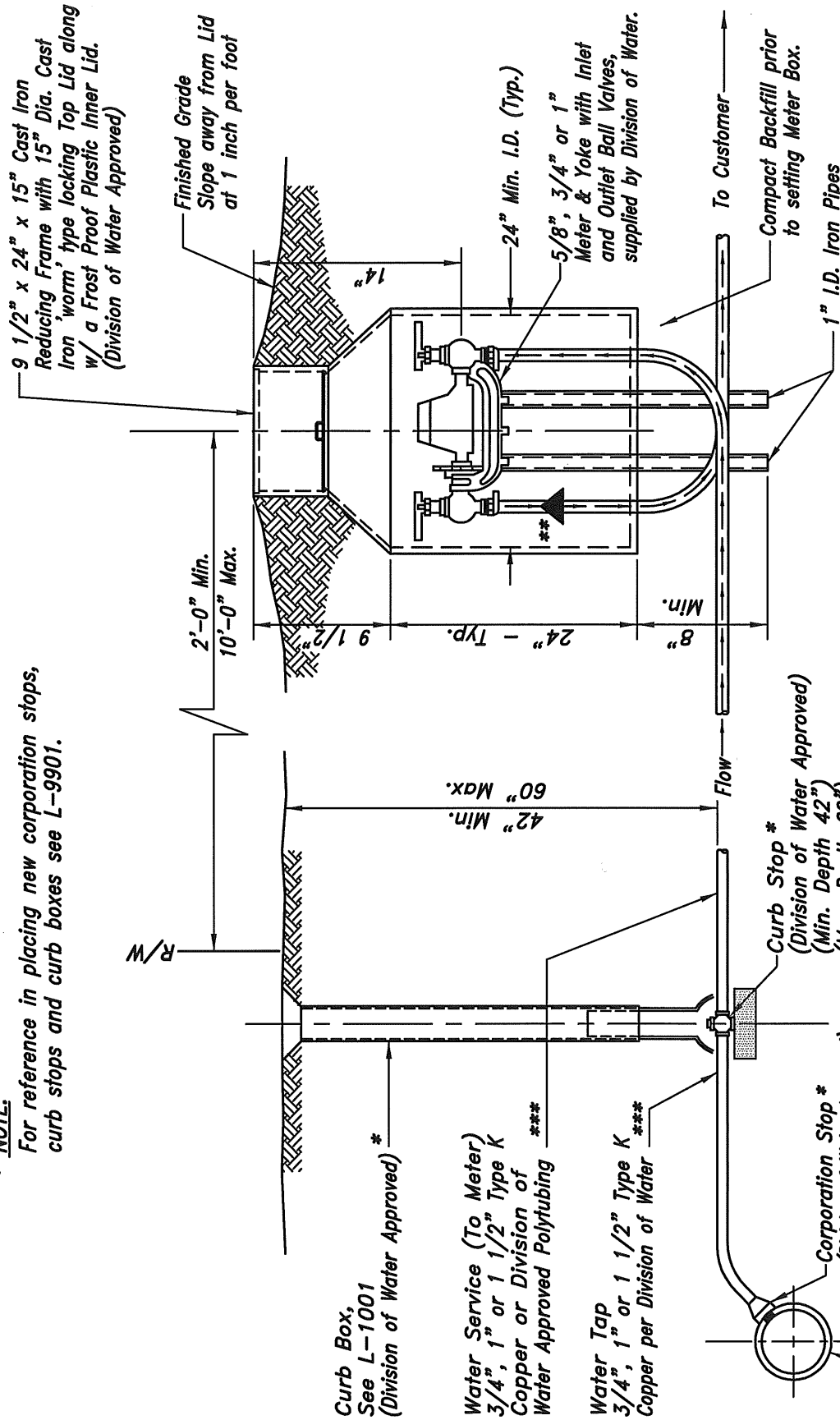


*** NOTE:**

For reference in placing new corporation stops, curb stops and curb boxes see L-9901.



Curb Box,
See L-1001
(Division of Water Approved) *

Water Service (To Meter)
3/4", 1" or 1 1/2" Type K
Copper or Division of
Water Approved Poly tubing ***

Water Tap
3/4", 1" or 1 1/2" Type K ***
Copper per Division of Water

Corporation Stop *
(Division of Water Approved)

Curb Stop *
(Division of Water Approved)
(Min. Depth 42")
(Max. Depth 60")

Water Service to be
Maintained By Property Owner.
Size Equal to Curb Stop Size or One Size Smaller
No connections between curb box and meter.

Water Main

** NOTE:

If the Meter size is less than the Water Service size, any Reducers/Increases shall be placed on the vertical outlet piping inside of the Meter Box.

*** NOTE:

Pipe Shall Be Copper Tubing Size (C.T.S.)

CITY OF COLUMBUS
DEPARTMENT OF PUBLIC UTILITIES
DIVISION OF WATER

APPROVED:
R.C. Waterfield 11-5-15
ADMINISTRATOR DATE

STANDARD DETAIL
METER BOX INSTALLATION
5/8" THRU 1" METER

