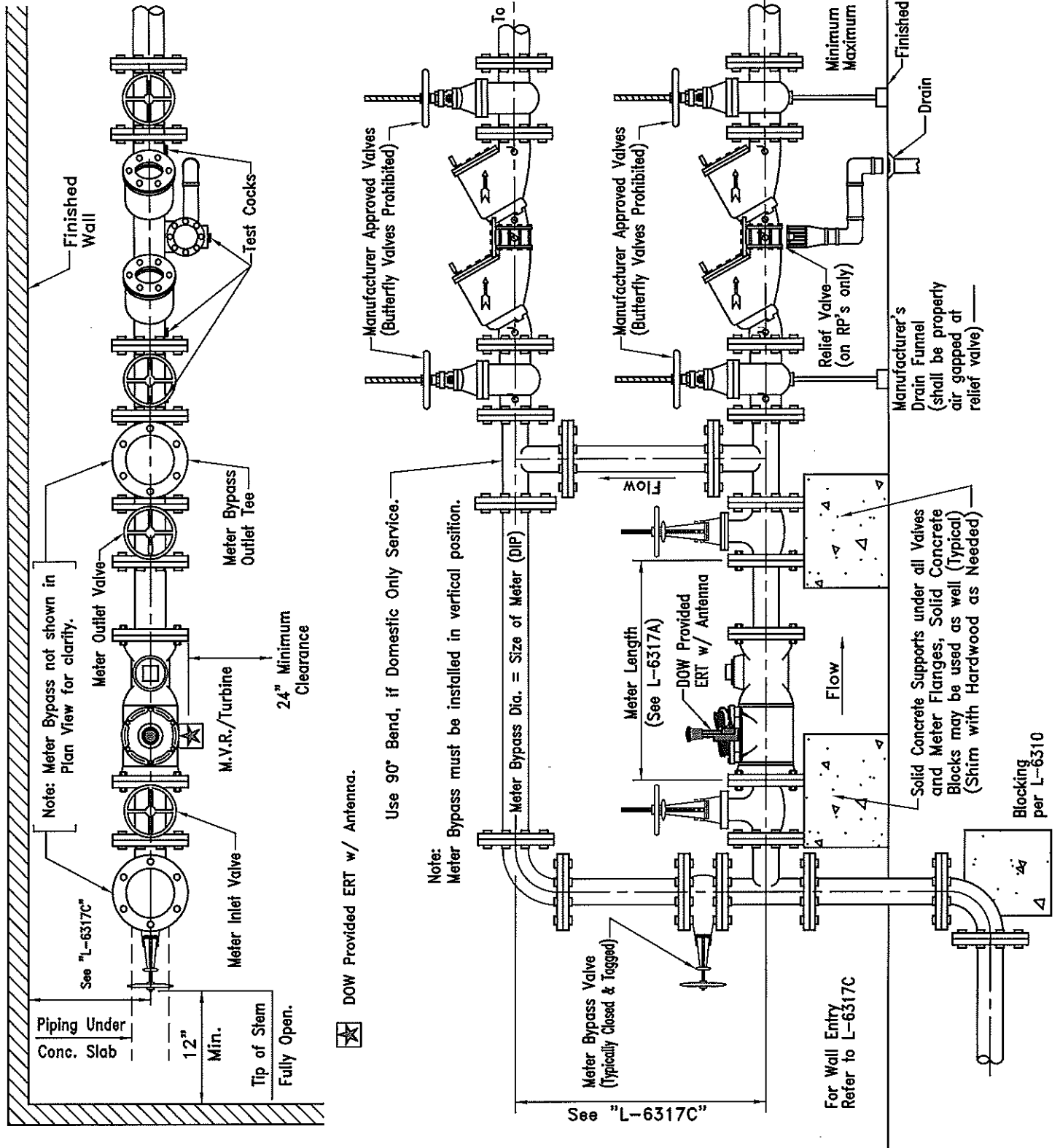


NOTE:
 Refer to Division of Water Standard Details "L-6317C",
 "L-9002A" & "L-9002B" for additional information.
 Plan Designer shall be responsible to insure that all bends,
 tees, valves, meters and/or backflow prevention assembly
 lengths fit within the allotted space.



L-9002F.Dwg Revision Date: 4/24/13

CITY OF COLUMBUS
 DEPARTMENT OF PUBLIC UTILITIES
 DIVISION OF WATER

APPROVED:
RC Westerfield
 ADMINISTRATOR

5-16-13
 DATE

STANDARD DETAIL
 TYPICAL METER SETTING
 WITH BACKFLOW PREVENTER
 (INSIDE BUILDING ONLY)
 2" THRU 12" METERS

