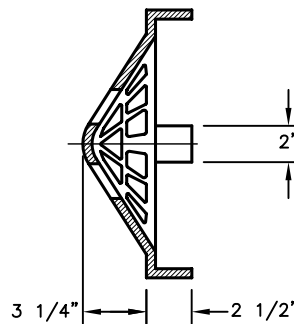


3/8" DIA. STAINLESS STEEL ANCHOR ROD 24" LONG BENT AROUND GRATE AS SHOWN & ANCHORED INTO THE CONCRETE CASING

14 3/4" DIA. SEE NOTE 2

PRE-APPROVED CASTINGS:

EJ NO. - 6495
NEENAH NO. - 4351-B



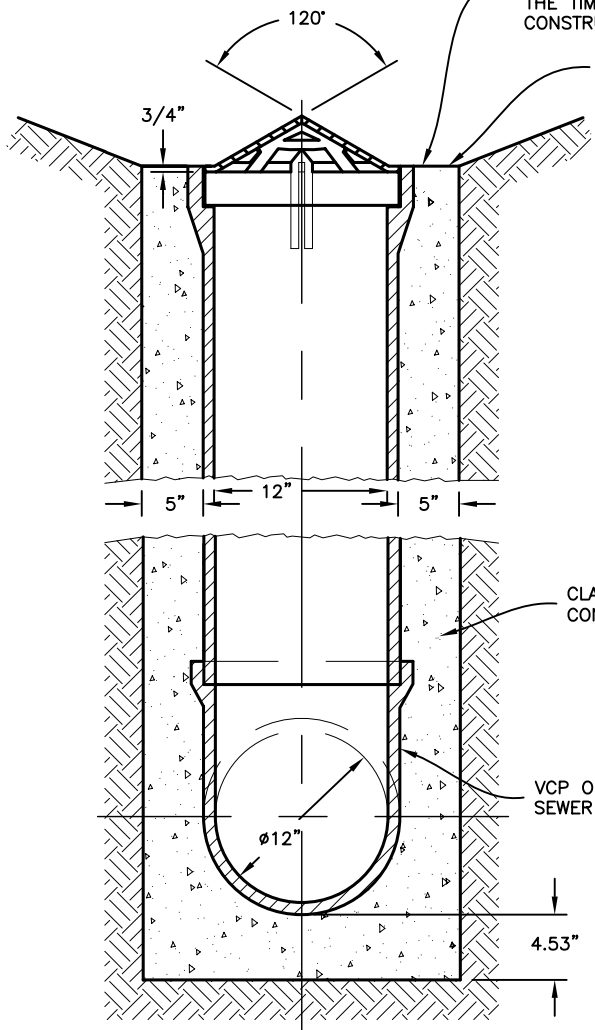
SECTION C-C

ELEVATION OF TOP OF DITCH INLET TO BE DETERMINED AT THE TIME OF CONSTRUCTION

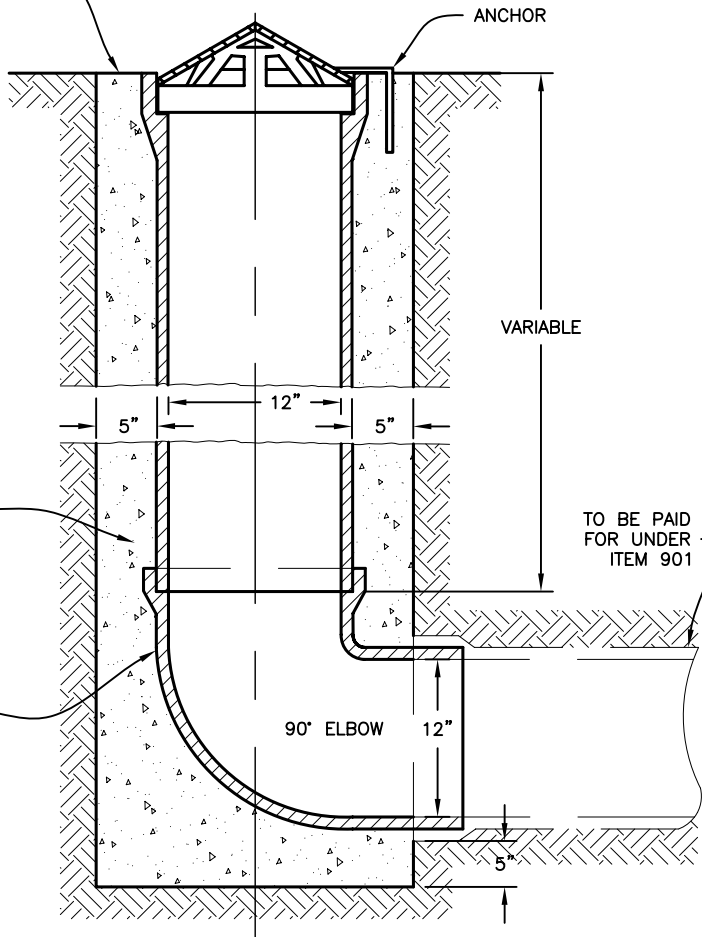
BOTTOM OF SIDE DITCH

NOTES:

- FRAMES, GRATES, AND COVERS SHALL MEET REQUIREMENTS OF 604.02.
- DIMENSION MAY VARY TO FIT BELL END OF PIPE. WEIGHT: 22± LBS.



SECTION B-B



SECTION A-A

CITY OF COLUMBUS, OHIO
DEPARTMENT OF PUBLIC UTILITIES
DIVISION OF SEWERAGE & DRAINAGE

CATCH BASIN
12" DIAMETER

STANDARD DRAWING
AA-S130

REVISED 12/6/13

SSS MANAGER

John J. Newson

PAGE

1

1