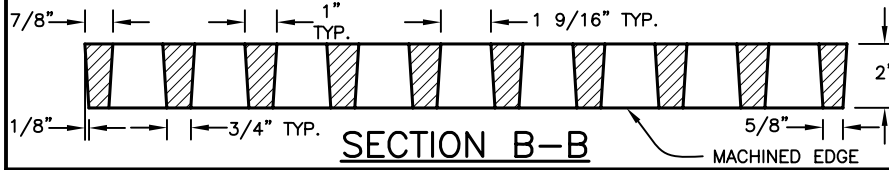


PLAN

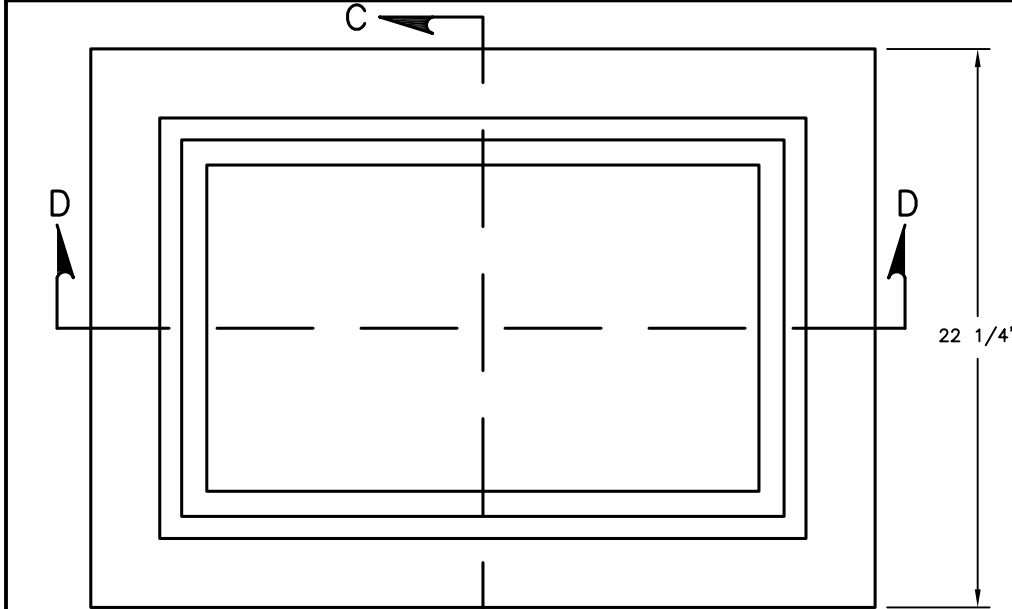
SECTION A-A



SECTION B-B

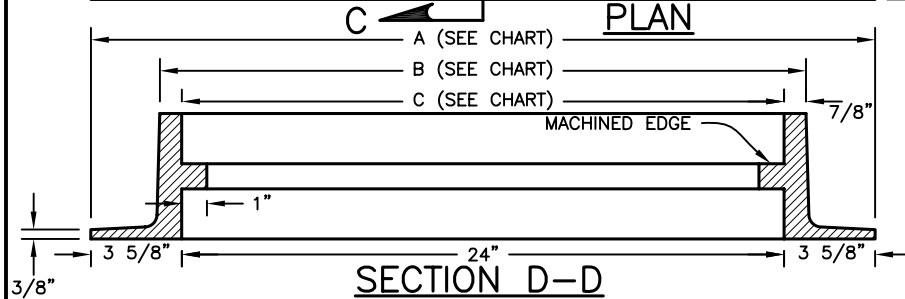
NOTE:

1. GRATING WEIGHT = 93 LBS. APPROX.
2. FRAMES, GRATES, AND COVERS SHALL MEET REQUIREMENTS OF 604.02 & AASHTO M306.
3. FRAME WEIGHT: SINGLE TRACK = 150 LBS. DOUBLE TRACK = 235 LBS.



PLAN

SECTION C-C



SECTION D-D

PRE-APPROVED CASTINGS:

EJ NO. - N/A  
NEENAH NO. - 3460-A

FRAME TYPE	A	B	C
SINGLE TRACK	31.25"	24"	25.75"
DOUBLE TRACK	55.25"	48"	49.75"

CITY OF COLUMBUS, OHIO  
DEPARTMENT OF PUBLIC UTILITIES  
DIVISION OF SEWERAGE & DRAINAGE

RECTANGULAR CAST IRON  
INLET FRAME & GRATING

STANDARD DRAWING  
AA-S140

REVISED 12/6/13

SSS MANAGER

*John J. Newson*

PAGE

1

1