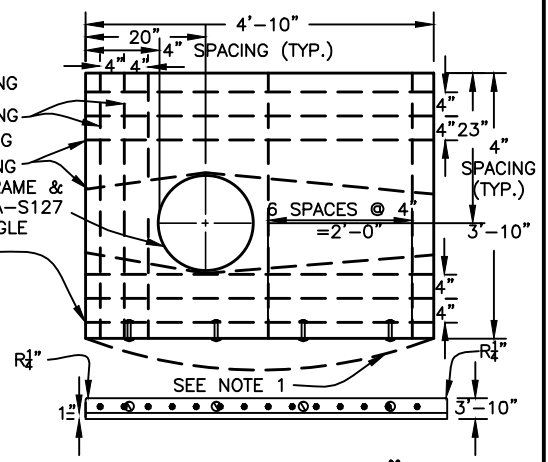
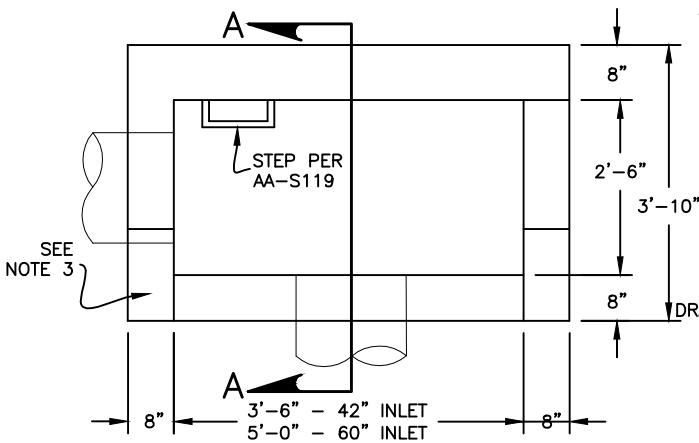


**SLAB FOR 60"
CURB INLET**

- 15 #3 BARS 3'-6" LONG
- 10 #3 BARS 3'-6" LONG
- 8 #3 BARS 6'-0" LONG
- 8 #3 BARS 4'-6" LONG
- C.I. FRAME & COVER AA-S127
- 3.5x3.5x3/8" STEEL ANGLE
- 4'-10" LONG
- 6'-4" LONG

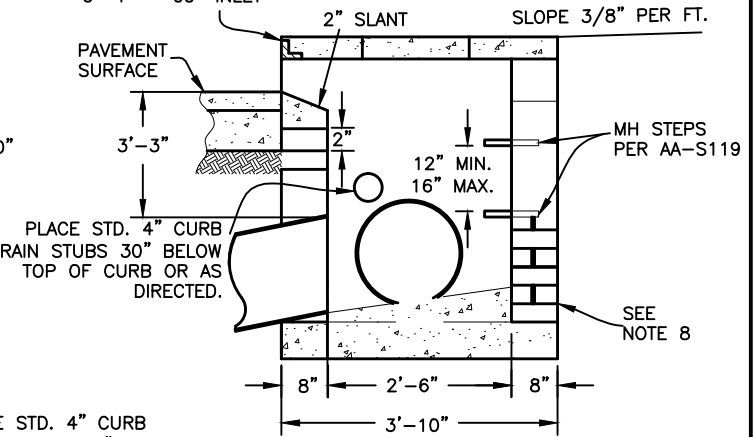


**SLAB FOR 42"
CURB INLET**

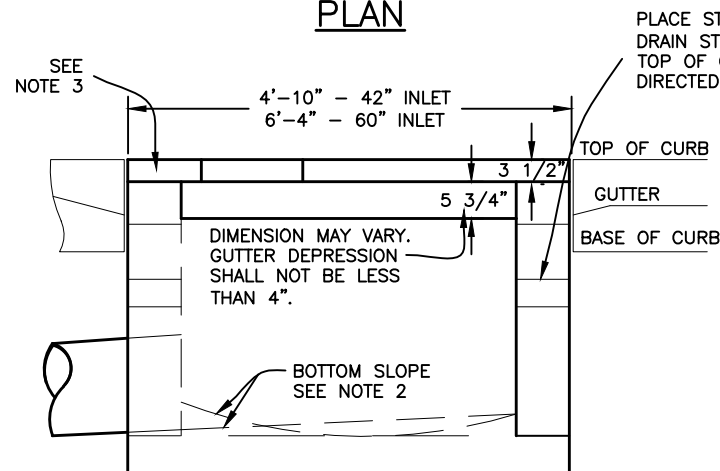


PLAN

- 3.5x3.5x3/8" STEEL ANGLE
- 4'-10" - 42" INLET
- 6'-4" - 60" INLET



SECTION A-A



ELEVATION

NOTES:

1. WHERE INLET IS TO BE LOCATED WITHIN LIMITS OF CURVED CURB, IF ORDERED, THE SLAB EDGE OF CURB LINE SHALL BE BUILT TO CONFORM TO THE REQUIRED RADIUS.
2. THE INLET BOTTOM SHALL BE SHAPED TO PROVIDE MINIMUM SLOPE OF 2" TO OUTLET PIPE, THE CROSS SECTIONAL FORM OF BOTTOM AND AS DIRECTED.

3. IN BRICK WALL CONSTRUCTION, SUITABLE CONCRETE OR STONE BLOCKS NOT LESS THAN 8"x8"x16" IN SIZE SHALL BE USED AT CORNERS ABUTTING CURB.
4. OUTLET PIPE MAY BE LOCATED IN END OR SIDEWALL. THE OUTLET SHALL BE DIRECTED TOWARD THE CENTER OF THE BASIN.
5. IN EXISTING PAVEMENTS ON AREAS APPROX. 12'x4' FOR 60" INLETS, AND 10'x4' FOR 42" INLETS, OR AS OTHERWISE ORDERED SHALL BE CUT OUT SO THAT REPAVING MAY BE SHAPED TO MEET THE DEPRESSED LIP OF THE INLET OPENING AS DIRECTED.
6. FOR ANCHORS USE 6"x3/8" BOLTS OR #3 REBAR 10" LONG WITH 2" 90° BENDS WITH ONE END WELDED TO INSIDE FACE OF ANGLE IN APPROVED MANNER.
7. WHEN USED IN CONJUNCTION WITH CURB OPENING EXTENSION (AA-S124) TOP FINISHED SURFACE OF INLET WALL TO BE BUILT AT LOWER LEVEL AS DIRECTED.
8. CONSTRUCT WALLS OF CLASS "C" CONCRETE OR BRICK. IF WALLS ARE CONSTRUCTED OF BRICK, SEE CMS 602.03.
9. PRECAST UNITS SHALL BE IN ACCORDANCE WITH ASTM C913 AND HAVE A MINIMUM THICKNESS OF 6". THEY SHALL BE REINFORCED SUFFICIENTLY TO BE SHIPPED AND HANDLED WITHOUT DAMAGE.

CITY OF COLUMBUS, OHIO
DEPARTMENT OF PUBLIC UTILITIES
DIVISION OF SEWERAGE & DRAINAGE

42" AND 60"
CURB INLETS

STANDARD DRAWING
AA-S123

REVISED 8/8/14

SSS MANAGER

John J. Newson

PAGE

1

1