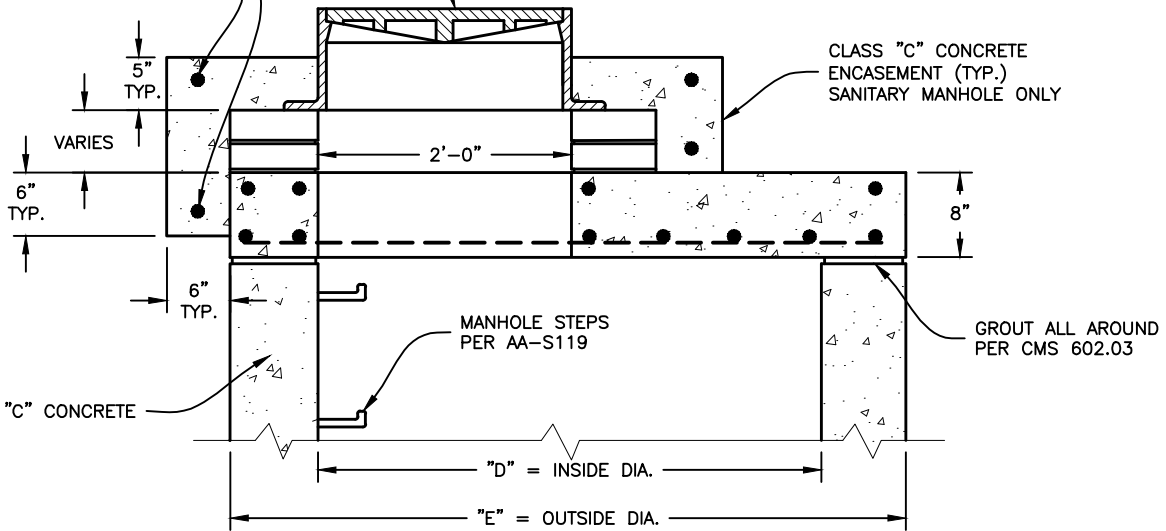


MANHOLE FRAME & COVER
PER AA-S111 (SANITARY)
OR AA-S112 (STORM)

#4 BARS SPACED EQUALLY
ALONG VERTICAL AXIS. ENDS
TO BE OVERLAPPED 10" (TYP.)



NOTES:

1. 2" MIN. COVER ON ALL REINFORCEMENT STEEL.
2. ALL REINFORCING STEEL SHALL MEET CMS 709.2 SPECIFICATIONS.

DIMENSIONS AND QUANTITIES FOR TOP SLAB

M.H. DIA. "D"	M.H. DIA. "E"	#4 STEEL REINFORCEMENT BARS												WEIGHT STEEL LBS.	APPROXIMATE CONCRETE VOLUME CU. YD.		
		A1			A2			A3		A4		A5				A6	
		NO.	LENGTH	RADIUS	NO.	LENGTH	RADIUS	NO.	LENGTH	NO.	LENGTH	NO.	LENGTH			NO.	LENGTH
4'-0"	4'-10"	2	17'-5"	2'-3"	2	9'-0"	1'-2"	3	5'-11"	3	5'-3"	2	6'-6"			66	0.38
5'-0"	6'-0"	2	20'-6"	2'-10"	2	9'-0"	1'-2"	3	7'-2"	3	6'-8"	2	7'-8"	1	7'-6"	82	0.63

CITY OF COLUMBUS, OHIO
DEPARTMENT OF PUBLIC UTILITIES
DIVISION OF SEWERAGE & DRAINAGE

CAST-IN-PLACE
CONCRETE TOP SLAB
FOR SHALLOW
MANHOLES

STANDARD DRAWING
AA-S108

REVISED 7/9/12

SSS MANAGER

John J. Newson

PAGE

1 / 1