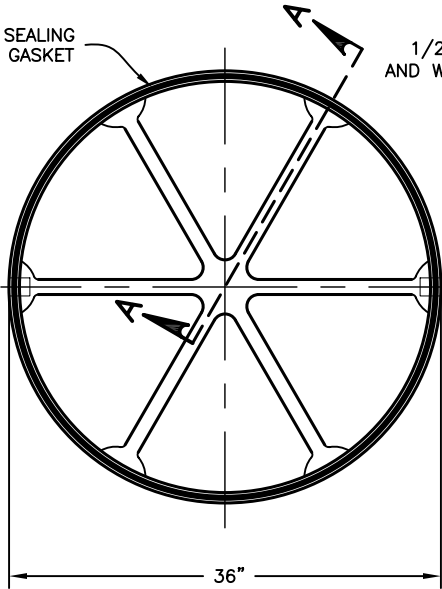
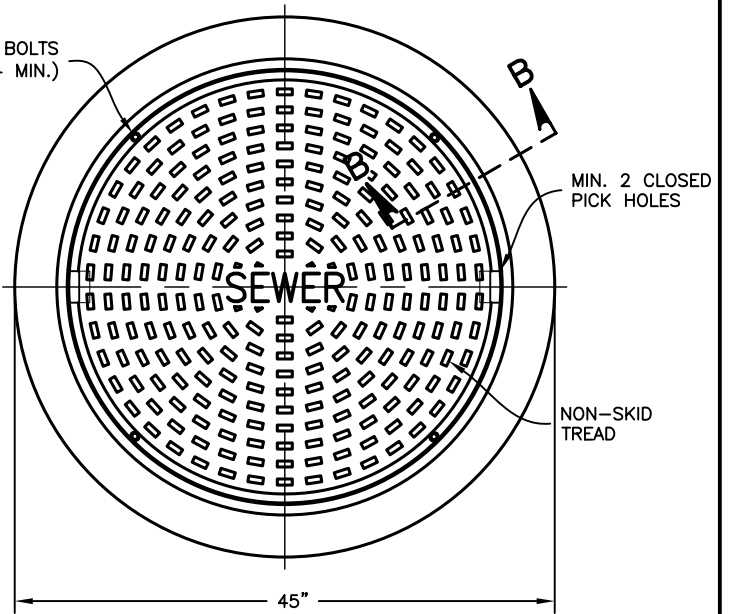


SELF SEALING CONTINUOUS GASKET

1/2" SS HEX BOLTS AND WASHERS (4 MIN.)



36"



45"

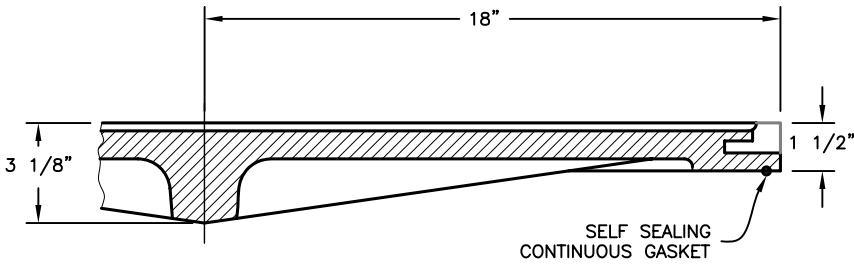
MIN. 2 CLOSED PICK HOLES

NON-SKID TREAD

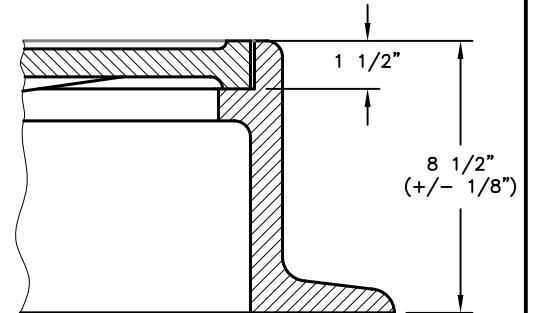
TOP VIEW OF ASSEMBLY

BOTTOM VIEW - LID

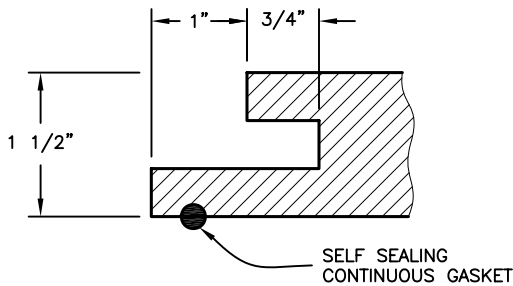
APPROX. WEIGHT = 720LBS.
(SEE SHEET 2 OF 2
FOR ALTERNATE DESIGN)



SECTION A-A



SECTION B-B



PICK HOLE DETAIL

PRE-APPROVED CASTINGS:

EJ NO. - 1585AVHGS, 1585Z1
NEENAH NO. - 1752

NOTES:

1. FRAMES, GRATES, AND COVERS SHALL MEET THE REQUIREMENTS OF 604.02 AND AASHTO M 306.
2. APPROXIMATE WEIGHT = 240LBS.

CITY OF COLUMBUS, OHIO
DEPARTMENT OF PUBLIC UTILITIES
DIVISION OF SEWERAGE & DRAINAGE

STANDARD DIMENSIONS
FOR 36" MANHOLE
FRAME & COVER
CASTINGS (SANITARY)

STANDARD DRAWING
AA-S114

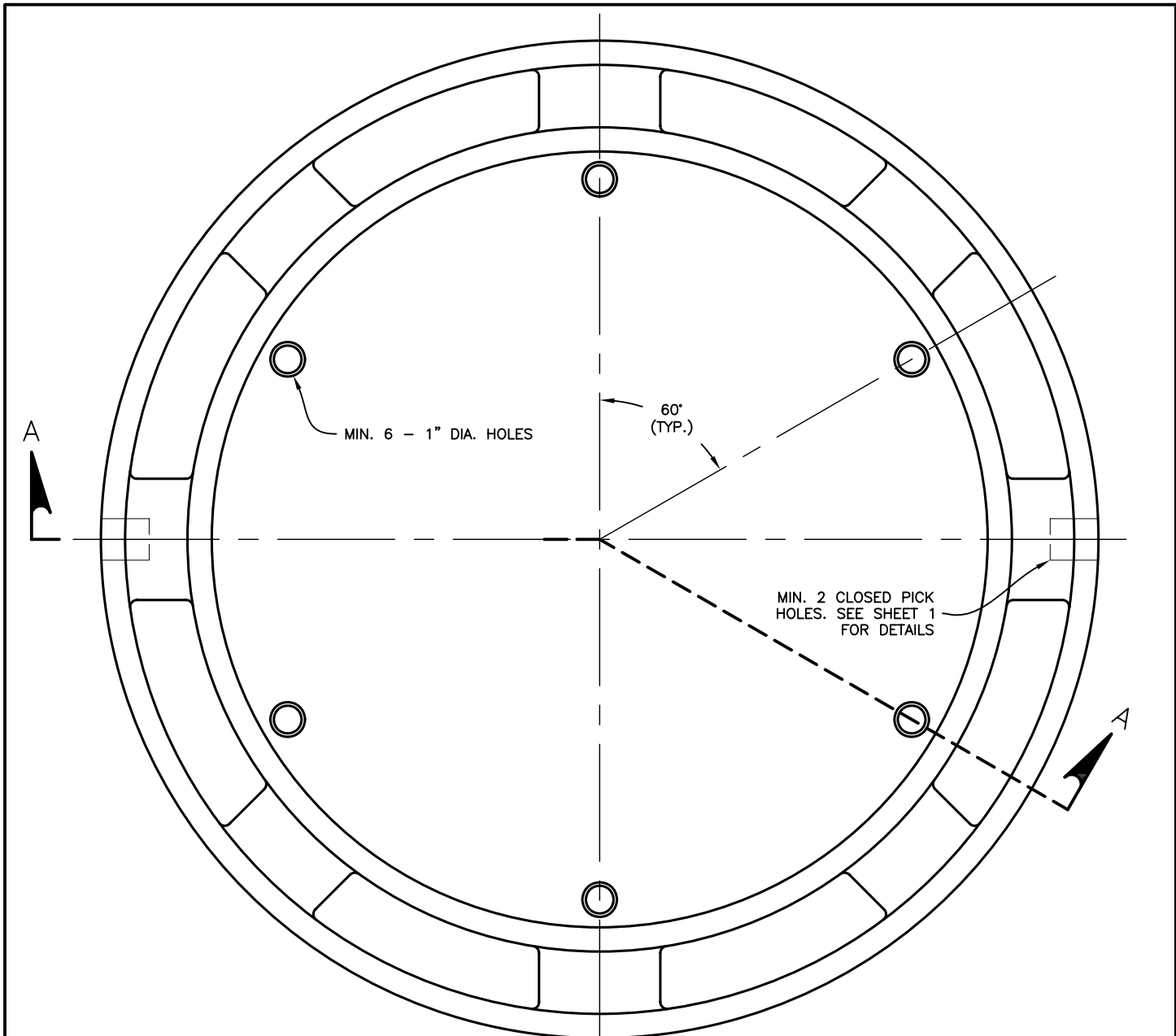
REVISED 12/6/13

SSES MANAGER

PAGE

1

2

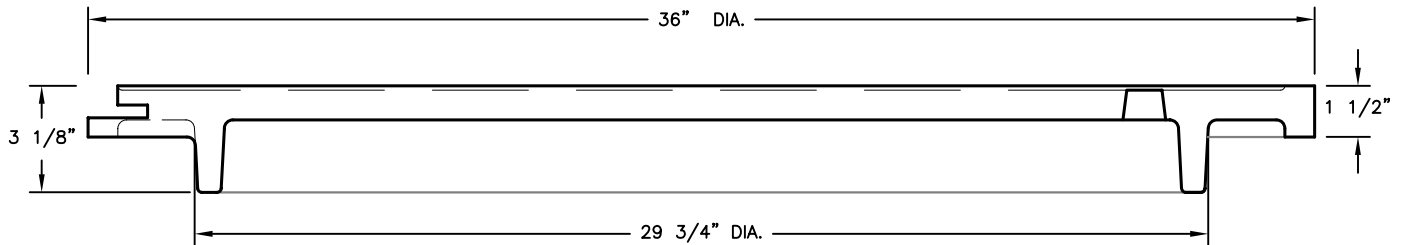


MIN. 6 - 1" DIA. HOLES

60° (TYP.)

MIN. 2 CLOSED PICK HOLES. SEE SHEET 1 FOR DETAILS

BOTTOM VIEW



NOTES:

1. FRAMES, GRATES, AND COVERS SHALL MEET THE REQUIREMENTS OF 604.02 AND AASHTO M 306.
2. APPROXIMATE WEIGHT = 238LBS.

PRE-APPROVED CASTINGS:

EJ NO. - 1585BVH
NEENAH NO. - 1752

SECTION A-A

CITY OF COLUMBUS, OHIO
DEPARTMENT OF PUBLIC UTILITIES
DIVISION OF SEWERAGE & DRAINAGE

John J. Newson

SSES MANAGER

36" MANHOLE COVER
(STORM)

STANDARD DRAWING
AA-S114

REVISED 12/6/13

PAGE 2