

"D" DENOTES WHERE DIMENSIONS ARE NEEDED

PAVEMENT REPLACEMENT SHALL BE  
PER STANDARD DRAWING 1441

## DIRECTIONAL BORING

CITY OF COLUMBUS, OHIO  
DEPARTMENT OF PUBLIC SERVICE  
DIVISION OF DESIGN AND CONSTRUCTION

CITY ENGINEER

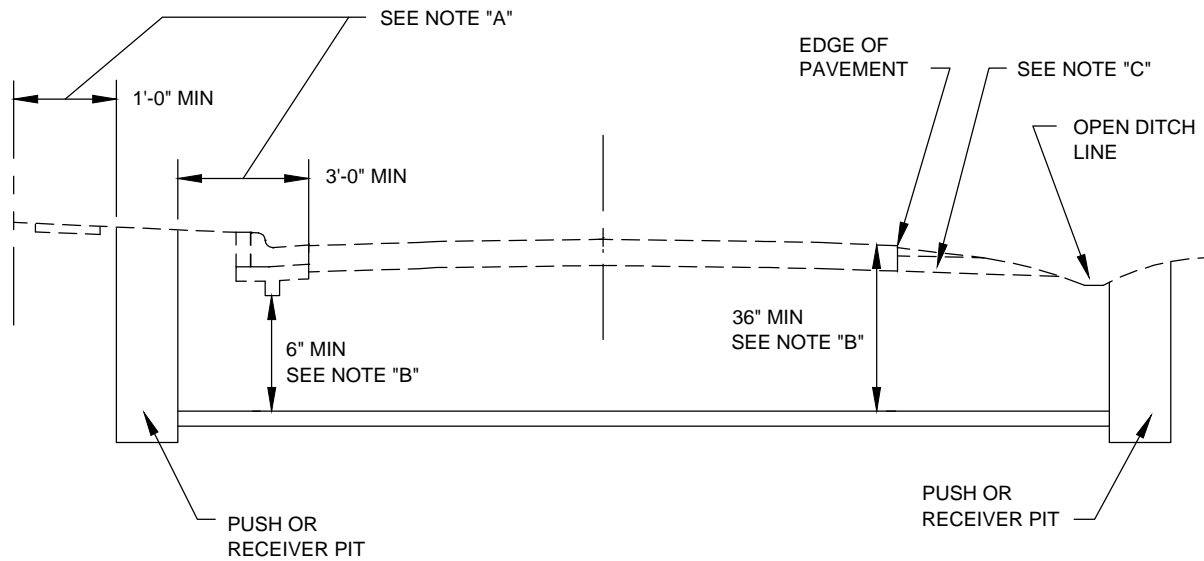
STD DWG  
**2166**

6/1/13

SHT 1 OF 2

TYPICAL LOCATION  
FOR CURBED STREETS

TYPICAL LOCATION  
FOR UNCURBED STREETS



NOTES:

- "A" MINIMUM OFFSETS SHALL BE 1 FOOT FROM RIGHT-OF-WAY LINES OR 3 FEET FROM EDGE OF PAVEMENT OR EDGE OF SHOULDER.
- "B" MINIMUM DEPTH FROM TOP OF PUSH TO TOP OF CURB FOR STANDARD COMBINED CURB AND GUTTER IS 30", STRAIGHT CURB 36", AND FLEXIBLE PAVEMENT 36" BELOW TOP OF PAVEMENT.
- "C" IF AGGREGATE DRAINS ARE DISTURBED, THEY SHALL BE REPLACED.

## DIRECTIONAL BORING

CITY OF COLUMBUS, OHIO  
DEPARTMENT OF PUBLIC SERVICE  
DIVISION OF DESIGN AND CONSTRUCTION

STD DWG

2166

6/1/13

SHT 2 OF 2