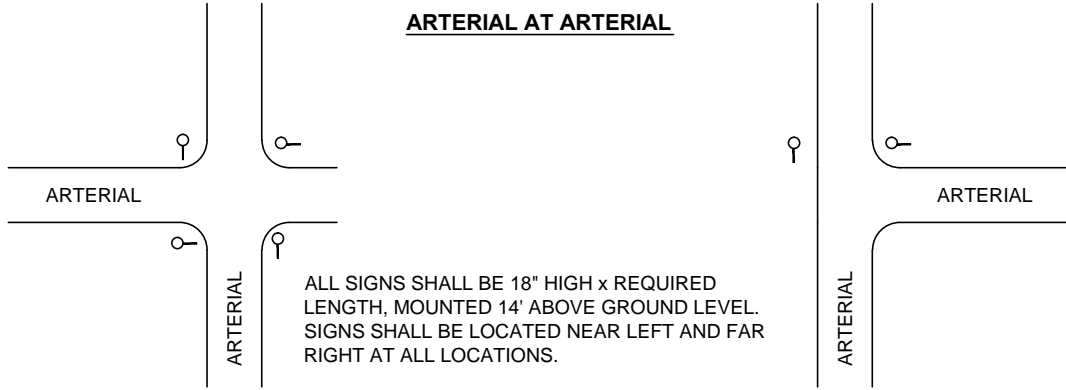
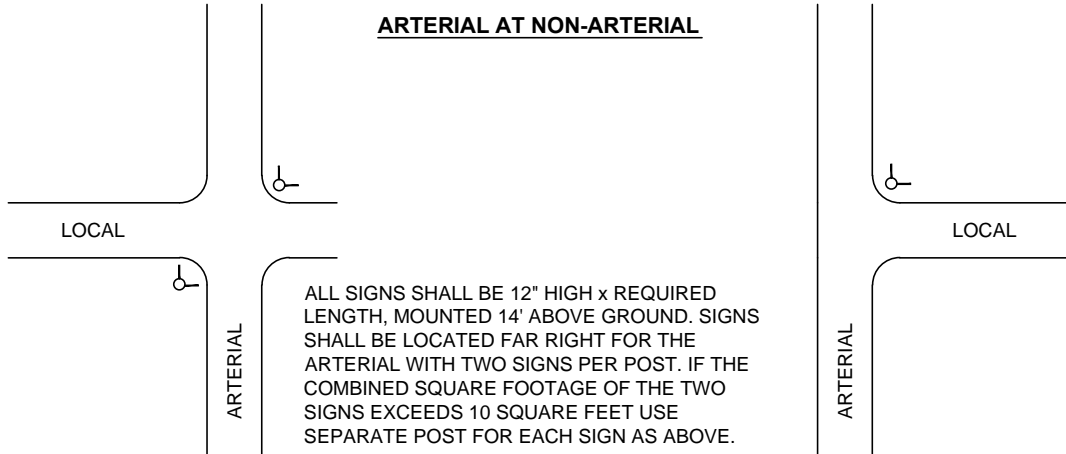


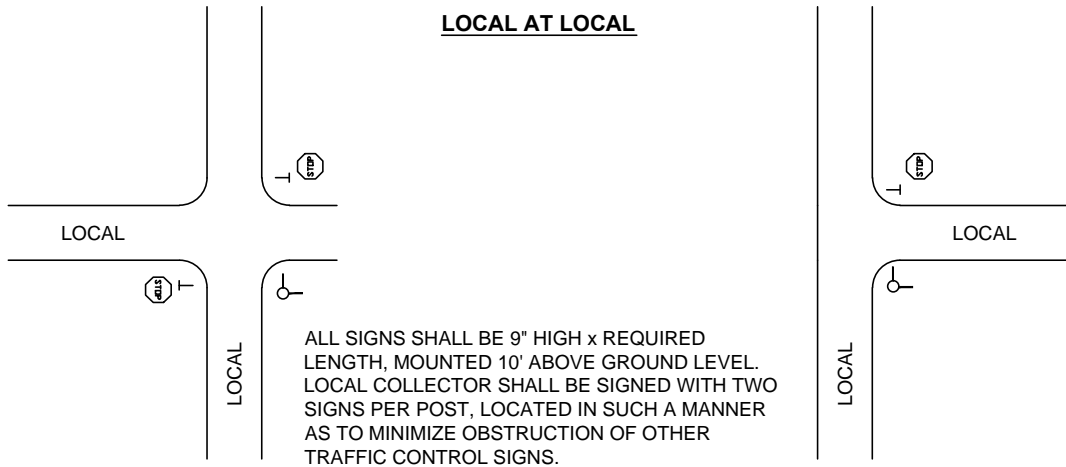
ARTERIAL AT ARTERIAL



ARTERIAL AT NON-ARTERIAL



LOCAL AT LOCAL



PLACEMENT

LOCAL COLLECTOR AND RESIDENTIAL STREETS SHALL HAVE THE SAME SIZE POST AND PLACEMENT STANDARDS.

STREET NAME SIGN

CITY OF COLUMBUS, OHIO
DEPARTMENT OF PUBLIC SERVICE
DIVISION OF DESIGN AND CONSTRUCTION

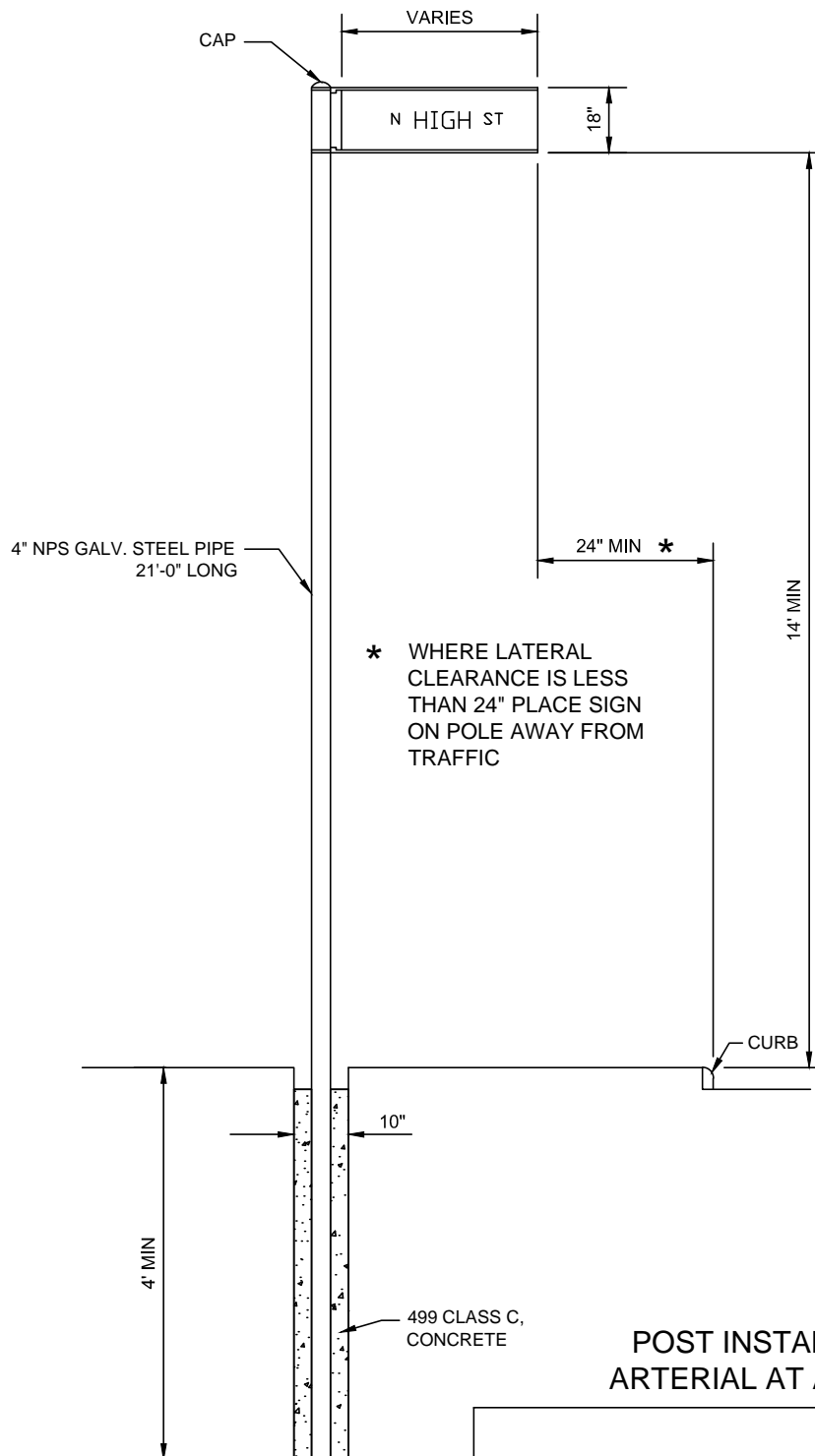
CITY ENGINEER

STD DWG

2185

12/1/13

SHT 1 OF 9



DIMENSIONS SHOWN SHALL BE CONSIDERED MINIMUM DIMENSIONS FOR NEW INSTALLATIONS AS WELL AS FOR INSTALLATIONS USING EXISTING SUPPORTS SUCH AS UTILITY POLES AND TRAFFIC SIGNAL POLES.

ONLY ONE STREET NAME SIGN PER SUPPORT SHALL BE LOCATED NEAR-LEFT AND FAR-RIGHT AT ALL LOCATIONS UNLESS OTHERWISE SPECIFIED.

STREET NAME SIGN

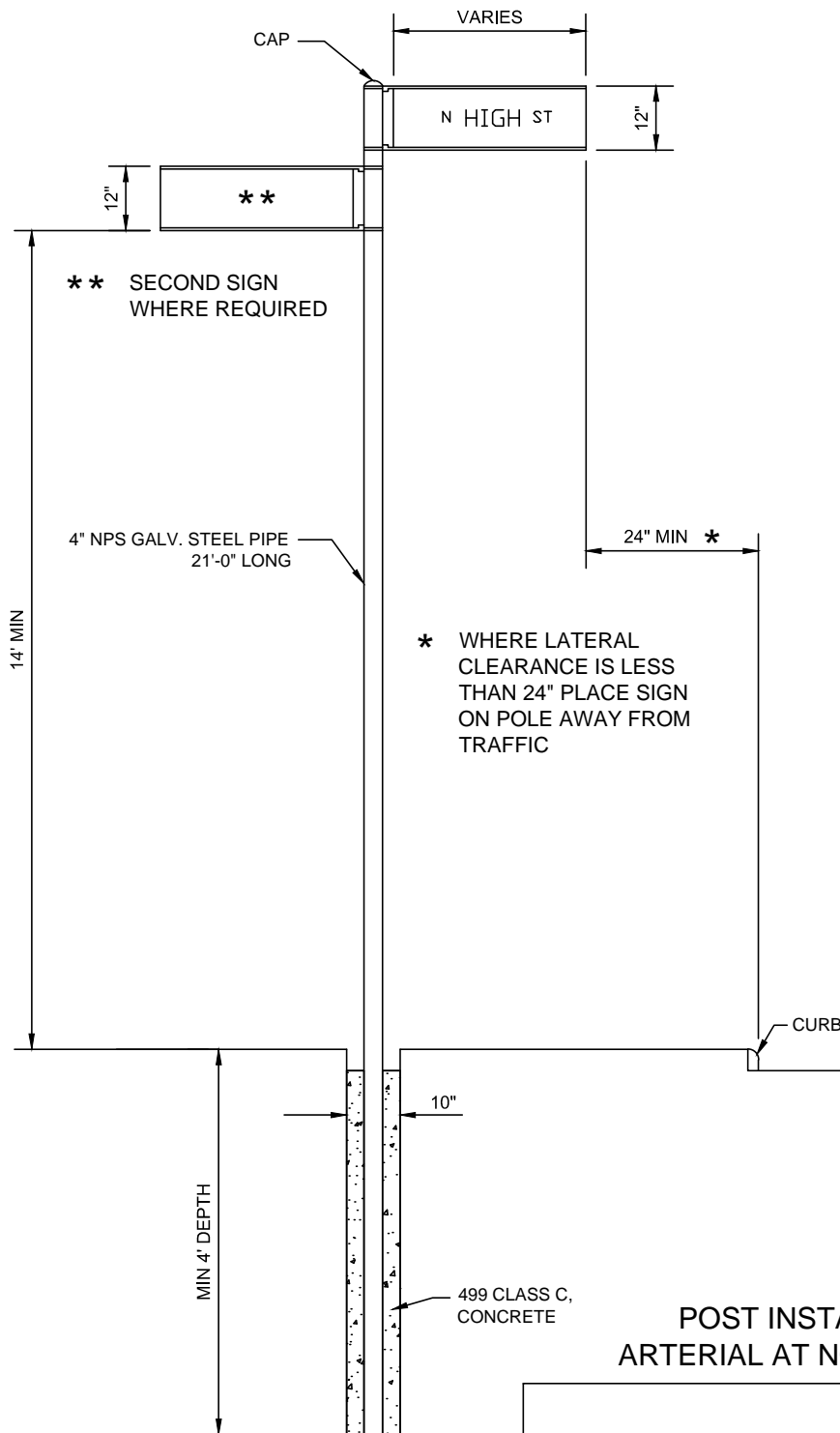
CITY OF COLUMBUS, OHIO
DEPARTMENT OF PUBLIC SERVICE
DIVISION OF DESIGN AND CONSTRUCTION

STD DWG

2185

12/1/13

SHT 2 OF 9



POST INSTALLATION ARTERIAL AT NON-ARTERIAL

STREET NAME SIGN

SIGNS SHALL BE LOCATED FAR-RIGHT FOR THE ARTERIAL WITH 2 SIGNS PER SUPPORT. IF THE COMBINED SQUARE FOOTAGE EXCEEDS 10 SQUARE FEET, A SEPARATE SUPPORT SHALL BE USED FOR EACH SIGN.

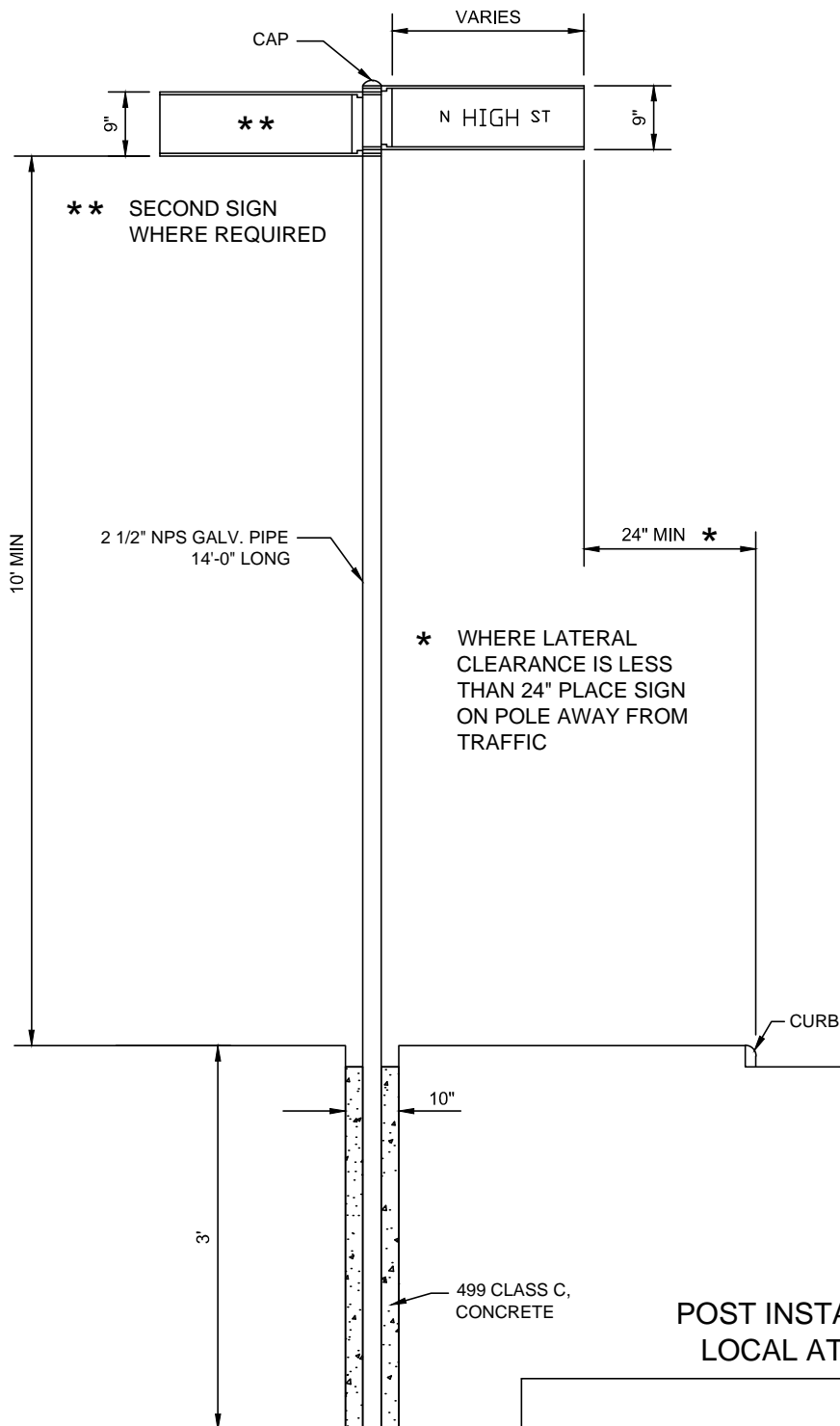
CITY OF COLUMBUS, OHIO
DEPARTMENT OF PUBLIC SERVICE
DIVISION OF DESIGN AND CONSTRUCTION

STD DWG

2185

12/1/13

SHT 3 OF 9



LOCAL COLLECTOR AND RESIDENTIAL STREETS
SHALL BE TREATED THE SAME

POST INSTALLATION
LOCAL AT LOCAL

STREET NAME SIGN

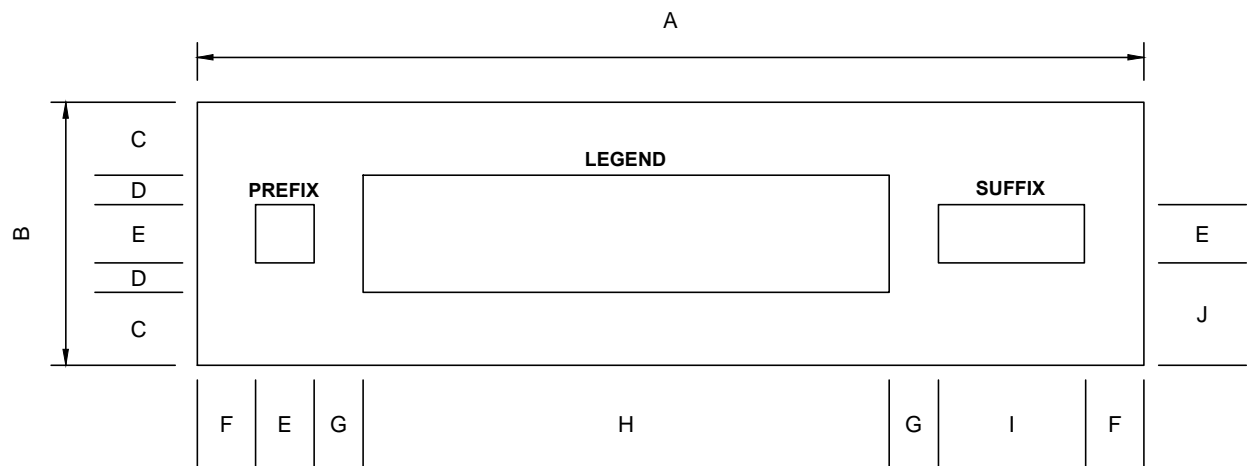
CITY OF COLUMBUS, OHIO
DEPARTMENT OF PUBLIC SERVICE
DIVISION OF DESIGN AND CONSTRUCTION

STD DWG

2185

12/1/13

SHT 4 OF 9



SIZE	A	B	C	D	E	F	G	H	I	J
9" SIGN	VARIES	9.0"	2.5"	1.0"	2.0"	2.0" MIN	2.0" MIN	VARIES	VARIES	3.5"
12" SIGN	VARIES	12.0"	3.0"	1.5"	3.0"	3.0" MIN	3.0" MIN	VARIES	VARIES	4.5"
18" SIGN	72.0" MAX	18.0"	5.0"	2.0"	4.0"	4.0" MIN	4.0" MIN	VARIES	VARIES	7.0"

BLADE

STREET NAME SIGN

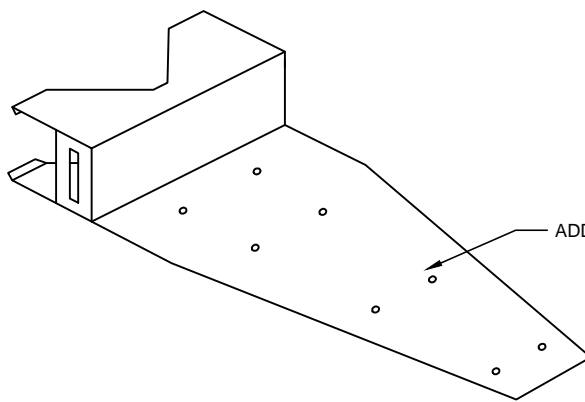
CITY OF COLUMBUS, OHIO
DEPARTMENT OF PUBLIC SERVICE
DIVISION OF DESIGN AND CONSTRUCTION

STD DWG

2185

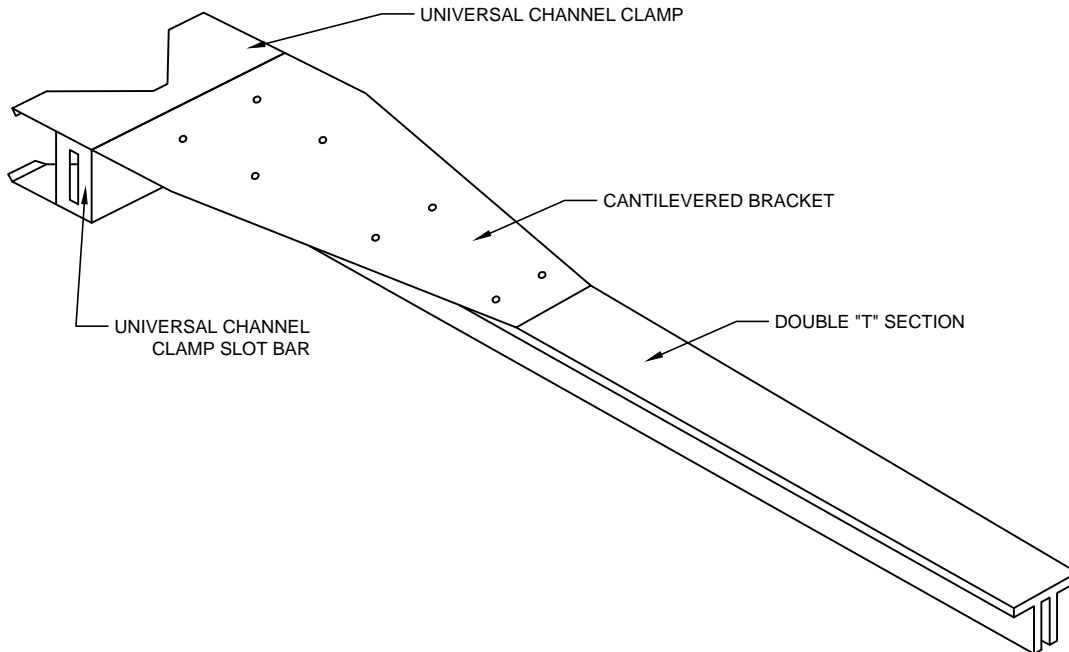
12/1/13

SHT 5 OF 9



ADDITIONAL CANTILEVERED BRACKET *

* USED WHEN SIGN AREA EXCEEDS SIX (6) SQUARE FEET. PLACE TWO (2) BRACKETS BACK TO BACK ON TOP AND BOTTOM OF SIGN BLADE.



MOUNTING HARDWARE

STREET NAME SIGN

FASTEN TO SUPPORT WITH PRE-ASSEMBLED BUCKLE-STRAP COMBINATION ASSEMBLY.

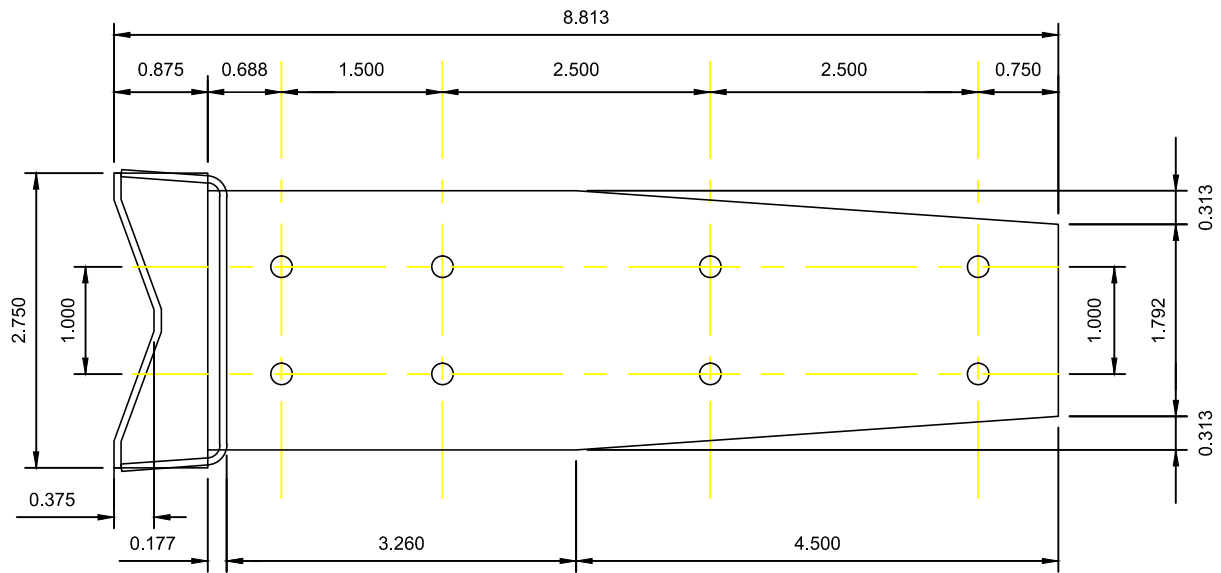
CITY OF COLUMBUS, OHIO
DEPARTMENT OF PUBLIC SERVICE
DIVISION OF DESIGN AND CONSTRUCTION

STD DWG

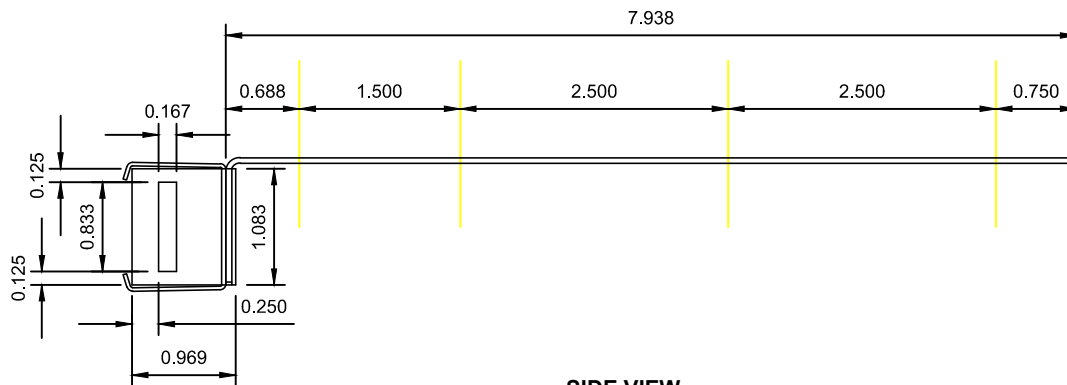
2185

12/1/13

SHT 6 OF 9



TOP VIEW



SIDE VIEW

MOUNTING HARDWARE CANTILEVER BRACKET

STREET NAME SIGN

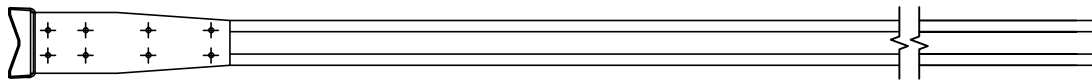
CITY OF COLUMBUS, OHIO
DEPARTMENT OF PUBLIC SERVICE
DIVISION OF DESIGN AND CONSTRUCTION

STD DWG

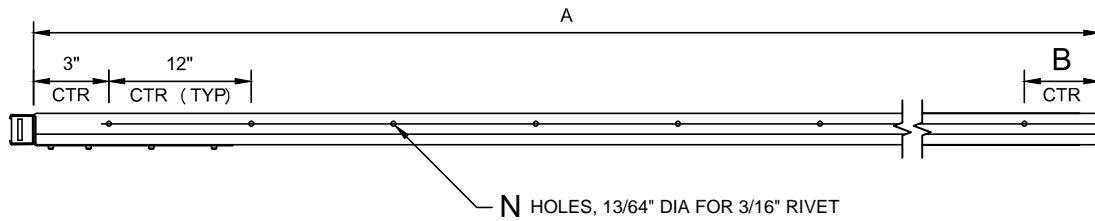
2185

12/1/13

SHT 7 OF 9

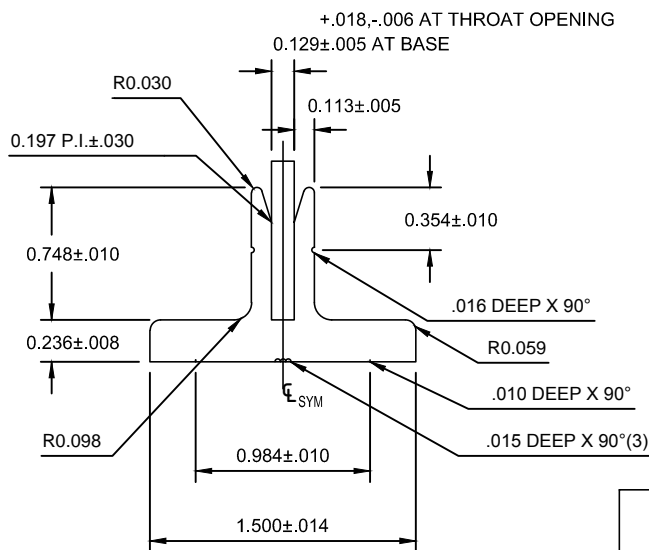


PLAN

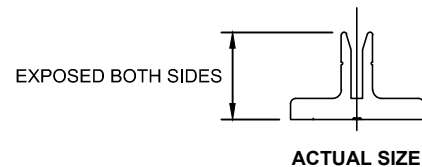


ELEVATION

A (inches)	B (inches)	N (number of holes)
42	3	4
48	1	4
54	3	5



SECTION



MOUNTING HARDWARE
DOUBLE TEE, TYPE II

STREET NAME SIGN

USE TYPE II TEE FOR 9" AND 12" BLADES THAT ARE
42", 48" AND 54" LONG.

USE TYPE I TEE FOR 9" AND 12" BLADES THAT ARE
LESS THAN 42" LONG.

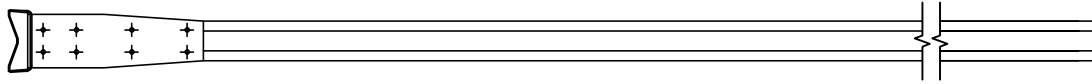
CITY OF COLUMBUS, OHIO
DEPARTMENT OF PUBLIC SERVICE
DIVISION OF DESIGN AND CONSTRUCTION

STD DWG

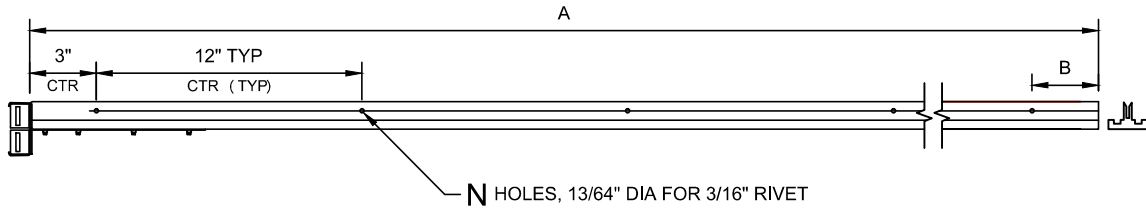
2185

12/1/13

SHT 8 OF 9

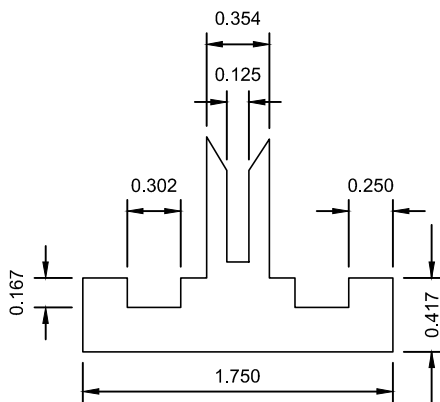


PLAN



ELEVATION

A (inches)	B (inches)	N (number of holes)
42	3	4
48	1	4
54	3	5
60	1	6
72	1	7



SECTION

USE TYPE III TEES FOR 9" AND 12" BLADES THAT ARE 60", 66" & 72" LONG AND ALL 18" BLADES WITH BACK TO BACK CANTILEVER BRACKETS.

MOUNTING HARDWARE DOUBLE TEE, TYPE III

STREET NAME SIGN

CITY OF COLUMBUS, OHIO
DEPARTMENT OF PUBLIC SERVICE
DIVISION OF DESIGN AND CONSTRUCTION

STD DWG

2185

12/1/13

SHT 9 OF 9