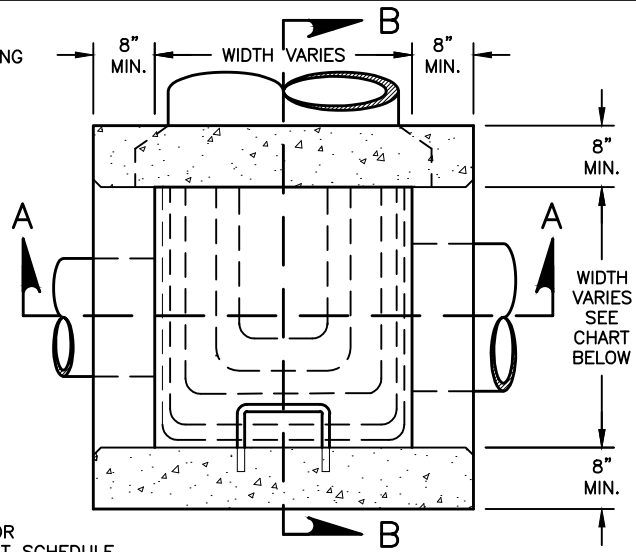


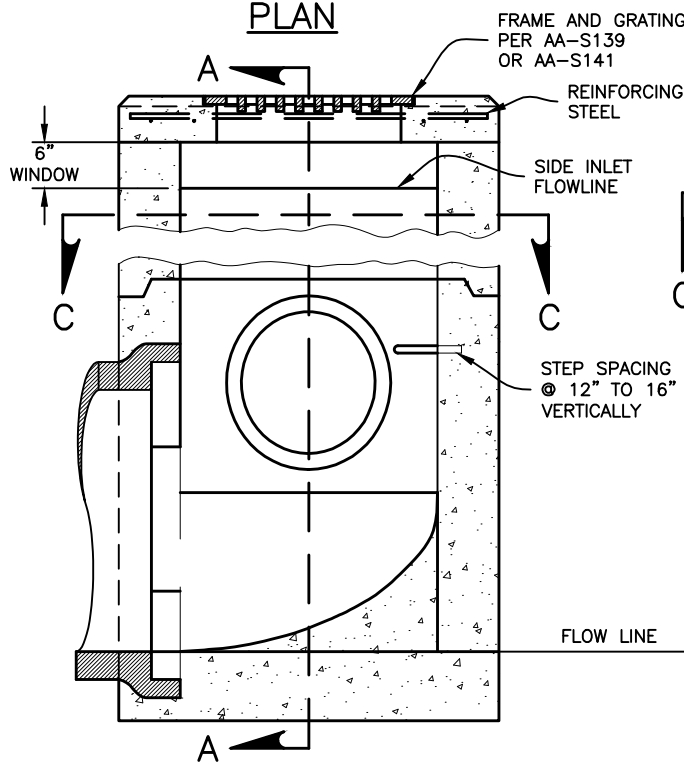
PLAN

FRAME AND GRATING
PER AA-S139
OR AA-S141

SEE CHART FOR
REINFORCEMENT SCHEDULE



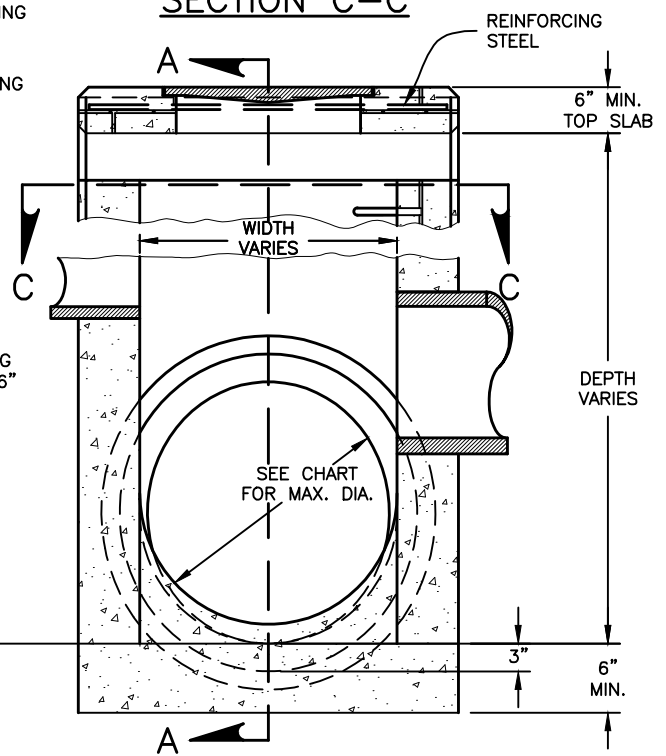
SECTION C-C



SECTION B-B

FRAME AND GRATING
PER AA-S139
OR AA-S141

STEP SPACING
@ 12" TO 16"
VERTICALLY



SECTION A-A

REINFORCING
STEEL

SEE CHART
FOR MAX. DIA.

NOTES:

1. **WALLS:** CAST-IN-PLACE UNITS HAVE A NOMINAL THICKNESS OF 8" AND MIN. THICKNESS OF 6". PRECAST UNITS SHALL BE IN ACCORDANCE WITH ASTM C913, SHALL HAVE A MIN. THICKNESS OF 6" AND BE REINFORCED SUFFICIENTLY TO PERMIT SHIPPING AND HANDLING WITHOUT DAMAGE. PRECAST TOPS SHALL HAVE MIN. 6" THICKNESS.
2. **CONCRETE:** CAST-IN-PLACE CONC. IS TO BE CLASS "C". PRECAST CONC. SHALL MEET REQUIREMENTS OF CMS 706.13 AND BE MARKED WITH CATCH BASIN NUMBER.
3. **PRECAST BASE:** IF A PRECAST BASE IS USED IT SHALL BE PLACED DEEP ENOUGH SO THAT THE TOP 6" CAN BE ADJUSTED TO PROVIDE THE GRATE ELEVATION SPECIFIED IN PLANS OR TO ALLOW POSITIVE DRAINAGE.

4. **MINIMUM DEPTH:** MINIMUM DEPTH OF AA-S134B SHALL BE THE OUTSIDE DIA. (O.D.) OF THE OUTLET PIPE PLUS 4".
5. **STEPS:** STEPS SHALL BE PROVIDED WHERE DEPTH EXCEEDS 6' AND SHALL MEET REQUIREMENTS OF AA-S119.
6. **INLETS OVER 12' DEPTH:** PRECAST OR CAST-IN-PLACE SHALL BE REINFORCED WITH #4 BARS ON 12" CENTERS. VERTICAL & HORIZONTAL 6. BARS SHALL HAVE 2" CLEARANCE FROM INSIDE WALL FACE.
7. **REINFORCEMENT:** TOP REINFORCING BARS SHALL BE ON 6" CENTERS. (SEE REINF. CHART).

WIDTH	MAX. PIPE SIZE
3 FEET	12" TO 33"
4 FEET	36" TO 42"

SLAB REINFORCEMENT	
WIDTH	#4 BARS
3 FEET	8
4 FEET	12

CITY OF COLUMBUS, OHIO
DEPARTMENT OF PUBLIC UTILITIES
DIVISION OF SEWERAGE & DRAINAGE

STANDARD CATCH BASIN
(24" TO 42" PIPE)
WITH SIDE INLETS

STANDARD DRAWING
AA-S134B

REVISED 8/8/14

SSSES MANAGER

John J. Newson

PAGE

1

1