

NOTES:

1. CONDUIT PLACED PARALLEL TO GUARDRAIL AND WITH AN OFFSET BETWEEN 5' AND 8' SHALL BE ENCASED. CONDUIT MAY NOT BE PLACED CLOSER THAN 5' WHEN PARALLEL TO GUARDRAIL.
2. CONDUIT ENCASEMENT SHALL EXTEND A MINIMUM OF 10' PAST THE LAST GUARD RAIL POST.

CONDUIT PARALLEL TO GUARDRAIL

**CONDUIT
GUARDRAIL
PROTECTION**

CITY OF COLUMBUS, OHIO
DEPARTMENT OF PUBLIC SERVICE
DIVISION OF DESIGN AND CONSTRUCTION

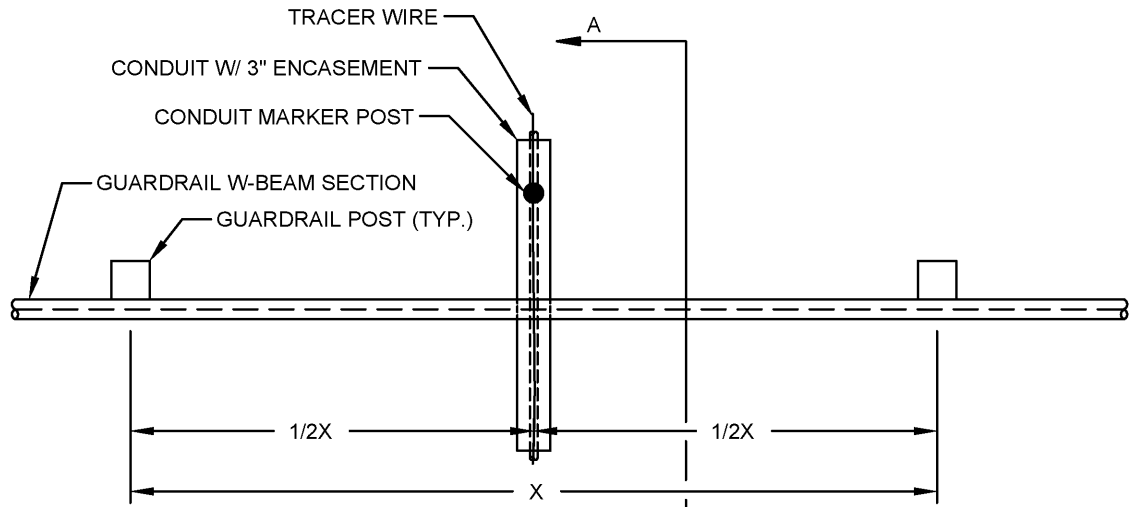
Hassan Zahran

CITY ENGINEER

STD DWG
4002

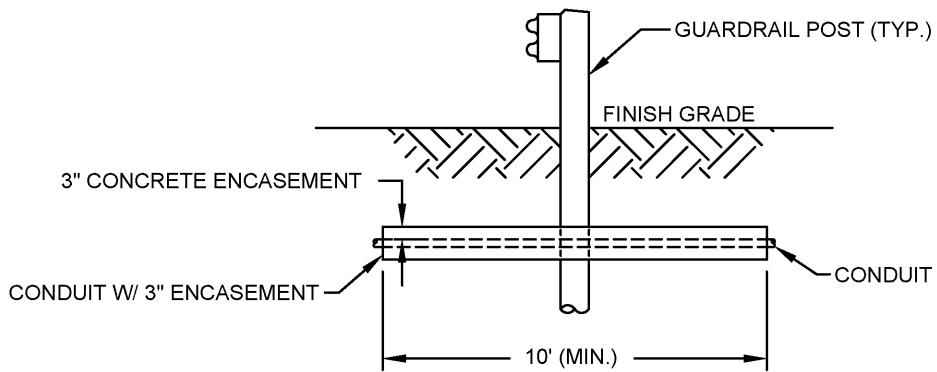
5/01/2014

SHT 1 OF 2



X = POST SPACING AS DEFINED BY THE OHIO DEPARTMENT OF TRANSPORTATION STANDARD CONSTRUCTION DRAWING MGS 2.1

TOP VIEW



**FRONT VIEW
SECTION A-A**

CONDUIT CROSSING GUARDRAIL

**CONDUIT
GUARDRAIL
PROTECTION**

CITY OF COLUMBUS, OHIO
DEPARTMENT OF PUBLIC SERVICE
DIVISION OF DESIGN AND CONSTRUCTION

**STD DWG
4002**

Hassan Zahran

5/01/2014

CITY ENGINEER

SHT 2 OF 2