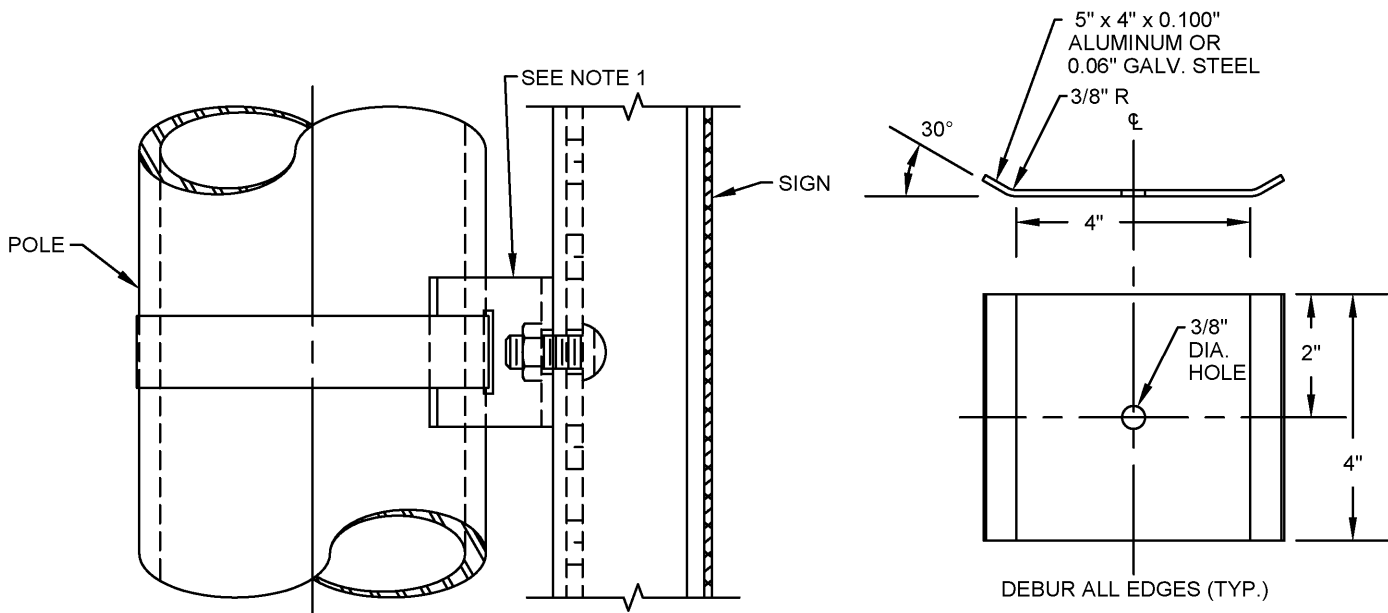


U-CHANNEL ATTACHMENT TO MAST ARM

SIGN TO U-CHANNEL ATTACHMENT



BEARING PLATE

NOTES:

1. USE A MINIMUM OF 2 BRACKETS (LOCATED 6" FROM TOP AND BOTTOM OF SIGN) PER INSTALLATION WITH MAXIMUM SPACING OF 3'.
2. ALL MOUNTING HARDWARE SHALL BE COATED TO MATCH SUPPORT STRUCTURE.
3. STAINLESS STEEL BANDING SHALL NOT BE PAINTED.

SIGN SUPPORT ASSEMBLY POLE MOUNTED	
CITY OF COLUMBUS, OHIO DEPARTMENT OF PUBLIC SERVICE DIVISION OF DESIGN AND CONSTRUCTION	
<i>Masoud Zahran</i>	STD DWG 4253
CITY ENGINEER	5/01/2014
	SHT 1 OF 1