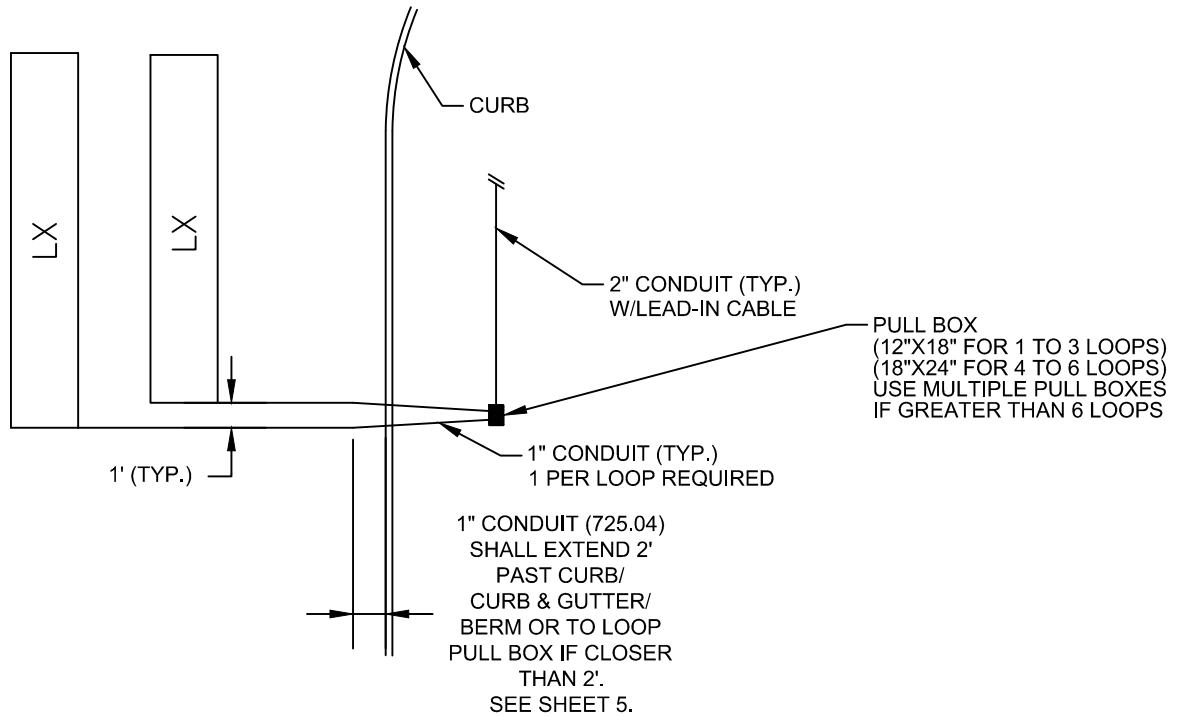


**VEHICULAR DETECTOR**



**MULTIPLE LOOP DETECTOR  
INSTALLATION DETAIL**

**NOTES:**

ONLY ONE SET OF LOOP WIRES SHALL BE RUN IN A SAW SLOT.

ALL ADJACENT SAW SLOTS SHALL HAVE A MINIMUM DISTANCE OF 1 FT BETWEEN THEM. NO SAW SLOT SHALL BE LOCATED WITHIN 1 FT OF A LONGITUDINAL OR TRANSVERSE JOINT IN P.C.C. PAVEMENTS IF THE SLOT IS PARALLEL TO THE JOINT.

DETECTOR LOOPS SHALL EACH BE ON A SEPARATE DETECTOR UNIT CHANNEL.

ALL CONDUIT FROM THE LOOP DETECTOR TO THE PULL BOX SHALL BE 725.04.

**VEHICULAR  
DETECTOR  
STANDARDS**

CITY OF COLUMBUS, OHIO  
DEPARTMENT OF PUBLIC SERVICE  
DIVISION OF DESIGN AND CONSTRUCTION

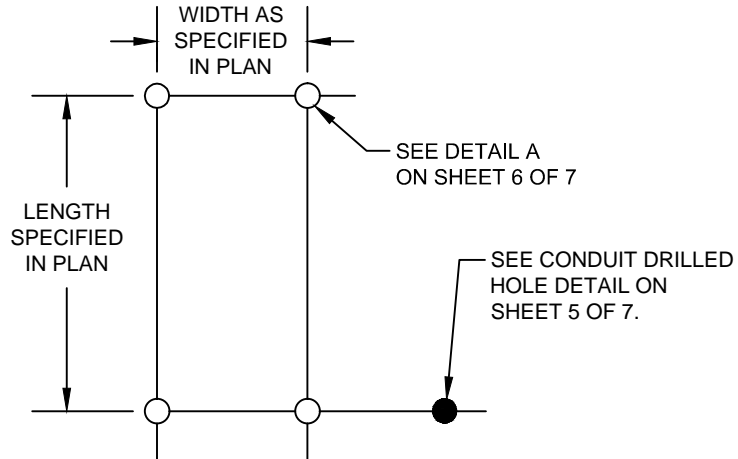
**STD DWG  
4300**

CITY ENGINEER

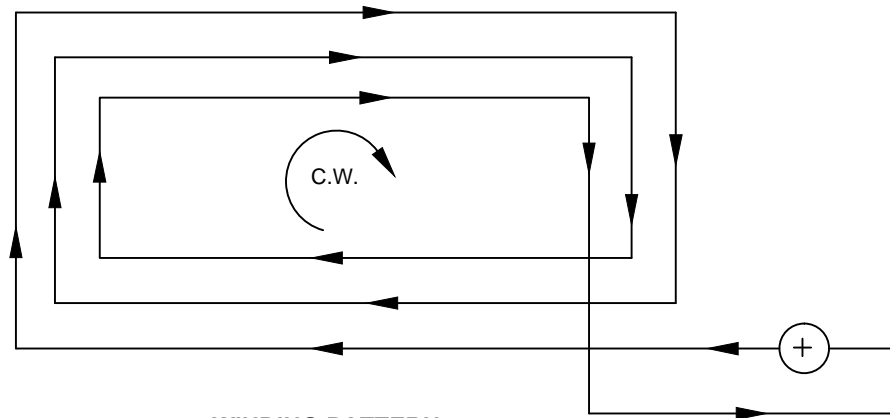
8/10/2017

SHT 1 OF 7

**RECTANGULAR DETECTOR  
LOOP DETAILS**



**SAW CUT LAYOUT**



**WINDING PATTERN**  
SEE TABLE FOR  
NUMBER OF TURNS

RECTANGULAR LOOP CONSTRUCTION	
LOOP TYPE	NUMBER OF TURNS
PRESENCE DETECTION LOOPS	3
ADVANCED DETECTION LOOPS (6'x6')	4

**VEHICULAR  
DETECTOR  
STANDARDS**

CITY OF COLUMBUS, OHIO  
DEPARTMENT OF PUBLIC SERVICE  
DIVISION OF DESIGN AND CONSTRUCTION

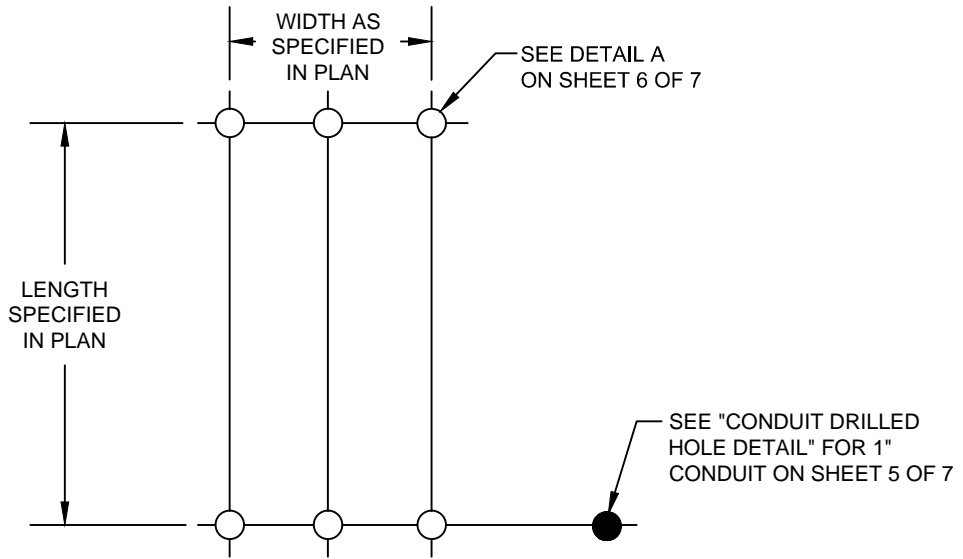
**STD DWG  
4300**

CITY ENGINEER

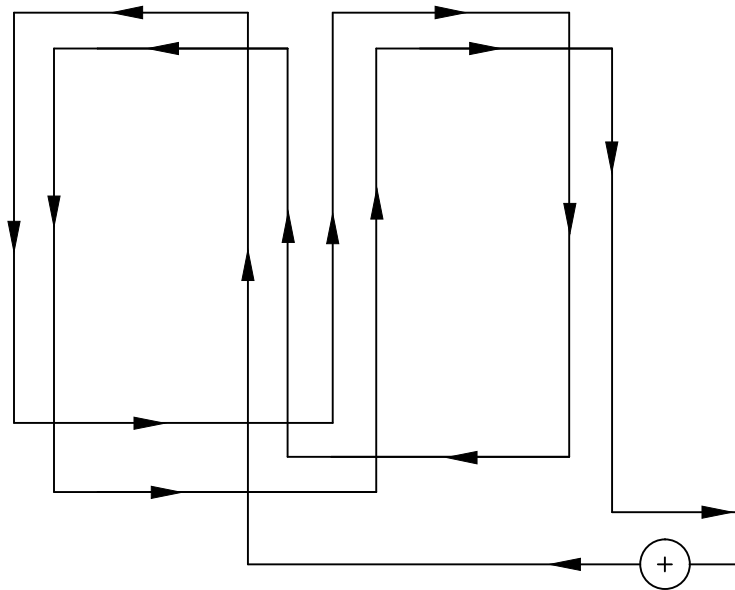
8/10/2017

SHT 2 OF 7

**QUADRUPOLE LOOP DETAILS**



**SAW CUT LAYOUT**



**WINDING PATTERN**

NUMBER OF TURNS IS 2-4-2

**VEHICULAR  
DETECTOR  
STANDARDS**

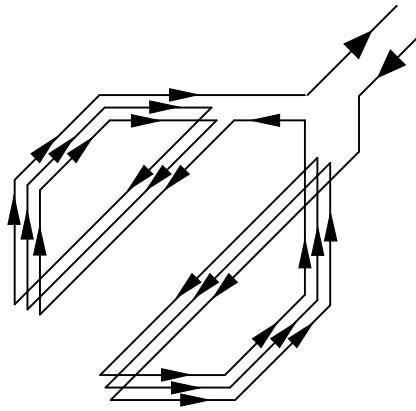
CITY OF COLUMBUS, OHIO  
DEPARTMENT OF PUBLIC SERVICE  
DIVISION OF DESIGN AND CONSTRUCTION

STD DWG  
**4300**

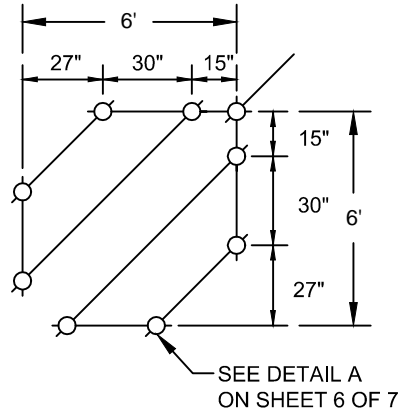
CITY ENGINEER

8/10/2017

SHT 3 OF 7



**WINDING DETAIL**



**SAWCUT DETAIL**

**BICYCLE ONLY  
LOOP DETECTOR  
INSTALLATION DETAIL**

BICYCLE LOOP CONSTRUCTION	
LOOP TYPE	NUMBER OF TURNS
PRESENCE DETECTION LOOPS	3-3-3-3

**VEHICULAR  
DETECTOR  
STANDARDS**

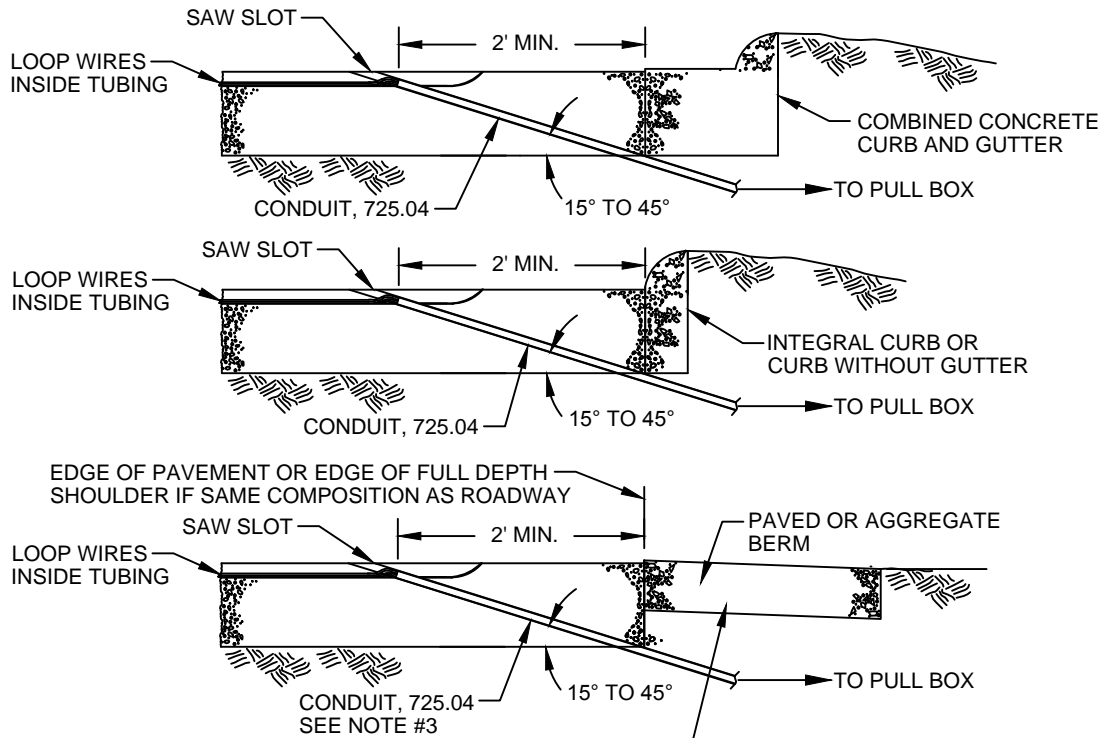
CITY OF COLUMBUS, OHIO  
DEPARTMENT OF PUBLIC SERVICE  
DIVISION OF DESIGN AND CONSTRUCTION

**STD DWG  
4300**

CITY ENGINEER

8/10/2017

SHT 4 OF 7

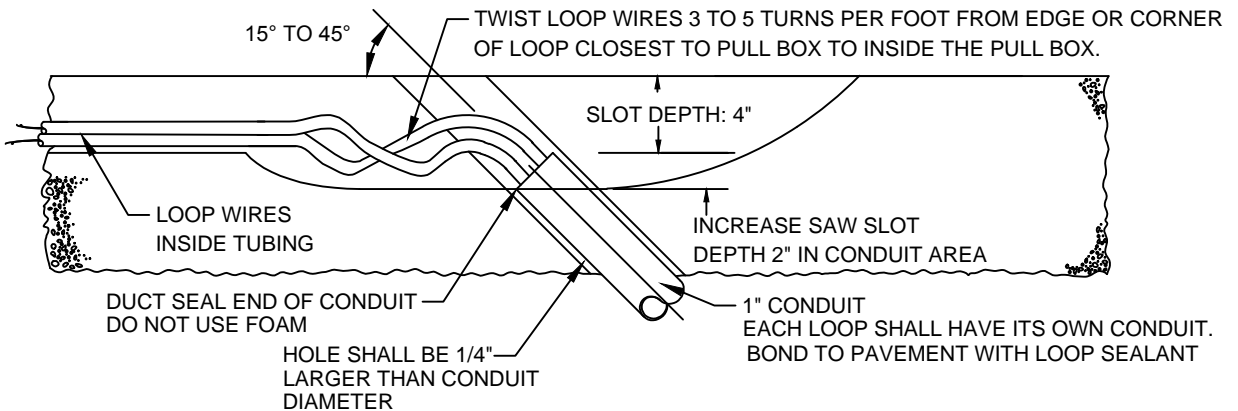


NO TRENCHING OR UNDERCUTTING CLOSER THAN 2' FROM THE EDGE OF PAVEMENT. BACKFILL TRENCH UNDER BERM WITH THE LOW STRENGTH MORTAR.

**NOTES:**

1. THE DRILLED HOLE SHALL BE LOCATED AS SHOWN ABOVE AND WITHIN THE FULL DEPTH PAVEMENT. IT SHALL NOT BE DRILLED OR CUT THROUGH THE PAVED BERM, CURB OR CURB AND GUTTER SECTION.
2. IN AREAS OF POOR PAVEMENT CONDITION, THE SAW SLOT DEPTH SHALL BE INCREASED TO INSURE ADEQUATE WIRE EMBEDMENT. ALL FIELD ADJUSTMENTS SHALL BE SUBJECT TO THE APPROVAL OF THE ENGINEER.
3. IF AN EXISTING PAVED BERM IS 4.5" THICK OR MORE, THE LOOP WIRE MAY BE INSTALLED IN A SAW SLOT CUT ACROSS THE BERM. WHEN PAVED BERM ARE LESS THAN 4.5" THICK, THE CONDUIT RACEWAY SHALL BE INSTALLED AS SHOWN.

**TYPICAL DRILLED HOLE LOCATIONS FOR 1" CONDUIT**



**CONDUIT DRILLED HOLE DETAIL FOR 1" CONDUIT**

# VEHICULAR DETECTOR STANDARDS

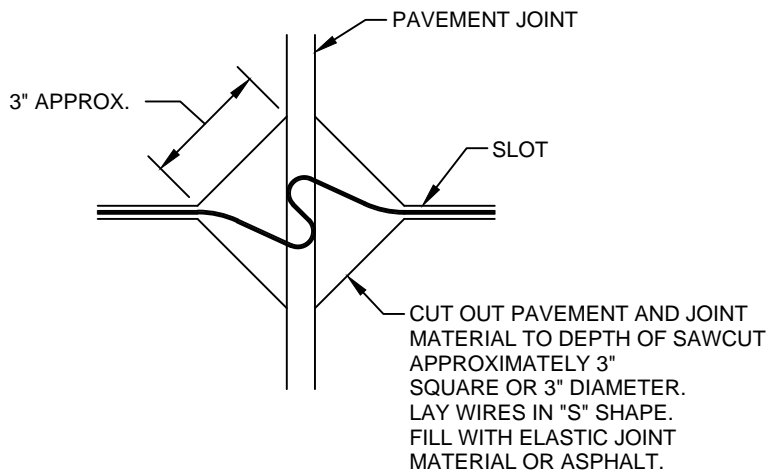
CITY OF COLUMBUS, OHIO  
DEPARTMENT OF PUBLIC SERVICE  
DIVISION OF DESIGN AND CONSTRUCTION

STD DWG  
**4300**

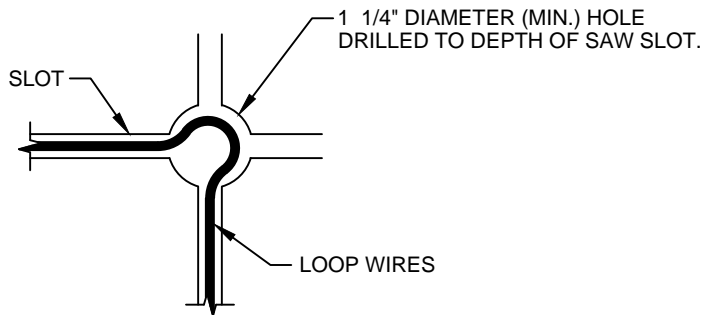
8/10/2017

CITY ENGINEER

SHT 5 OF 7



**JOINT CROSSING DETAIL  
IN PORTLAND CEMENT CONCRETE  
PAVEMENTS**



**DETAIL A**

**VEHICULAR  
DETECTOR  
STANDARDS**

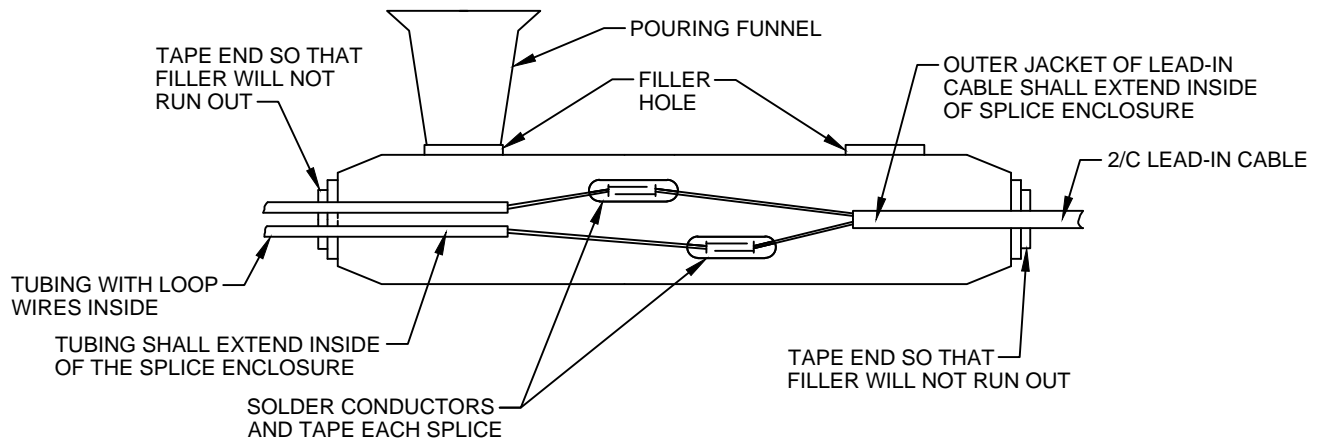
CITY OF COLUMBUS, OHIO  
DEPARTMENT OF PUBLIC SERVICE  
DIVISION OF DESIGN AND CONSTRUCTION

STD DWG  
**4300**

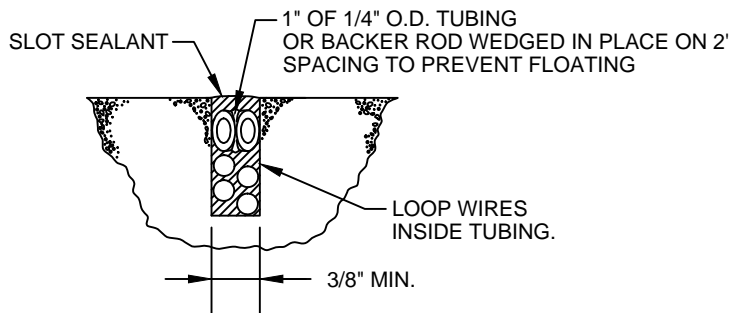
CITY ENGINEER

8/10/2017

SHT 6 OF 7



**SPLICE ENCLOSURE DETAIL**



**SLOT DETAIL**

**NOTES:**

LOOP DETECTOR WIRE TO LEAD-IN CABLE SPLICES WITHIN THE ENCAPSULATED SPLICE ENCLOSURE SHALL BE SOLDERED.

IF A PULLBOX IS NOT SPECIFIED IN THE PLANS, THE WATERPROOF SPLICE ENCLOSURE SHALL BE LOCATED IN THE FIRST ENTERED POLE OR PEDESTAL, EXCEPT IF THE CONTROLLER CABINET IS MOUNTED ON THAT POLE OR PEDESTAL, IN WHICH CASE THE LOOP WIRES SHALL BE ROUTED DIRECTLY INTO THE CABINET.

THE ENCLOSURE SHALL NOT CONTAIN VISIBLE AIR BUBBLES (VOIDS) GREATER THAN 1/4 IN (16 MM)

LOOP SLOT DEPTH SHALL BE 4 IN.

LOOP DETECTOR WIRE IN TUBING SHALL BE AS SPECIFIED IN CMSC TABLE 732.19-1

LOOP DETECTOR SEALANT SHALL BE PER THE CITY OF COLUMBUS PRE-QUALIFIED PRODUCT LIST.

SAW SLOTS SHALL BE THOROUGHLY CLEANED AND DRIED PRIOR TO INSTALLATION OF SEALANT.

# VEHICULAR DETECTOR STANDARDS

CITY OF COLUMBUS, OHIO  
DEPARTMENT OF PUBLIC SERVICE  
DIVISION OF DESIGN AND CONSTRUCTION

STD DWG  
**4300**

CITY ENGINEER

8/10/2017

SHT 7 OF 7